

Parts Manual

DIRECTION ARROW

ARROWS ARE USED WITH ILLUSTRATIONS TO INDICATE THE FRONT OF THE UNIT. "RIGHT-HAND" AND "LEFT-HAND" SIDES ARE DETERMINED BY FACING THE DIRECTION OF MACHINE FORWARD TRAVEL.

BOX ENCLOSED ILLUSTRATIONS

A REFERENCE NUMBER, SHOWN IN THE PARTS LIST, IS ASSIGNED TO A BOX ENCOMPASSING ALL PARTS SOLD AS A SERVICE ASSEMBLY.

REFERENCE NUMBER IDENTIFICATION

000-099 PARTS USED FOR ASSEMBLY
100-199 BOLTS & FASTENERS
800-899 REPLACEMENT PARTS OR SERVICE ASSEMBLIES –
USED TO REPLACE OR REBUILD COMPONENTS OF THE
MACHINE

-TABLE OF CONTENTS: PARTS-

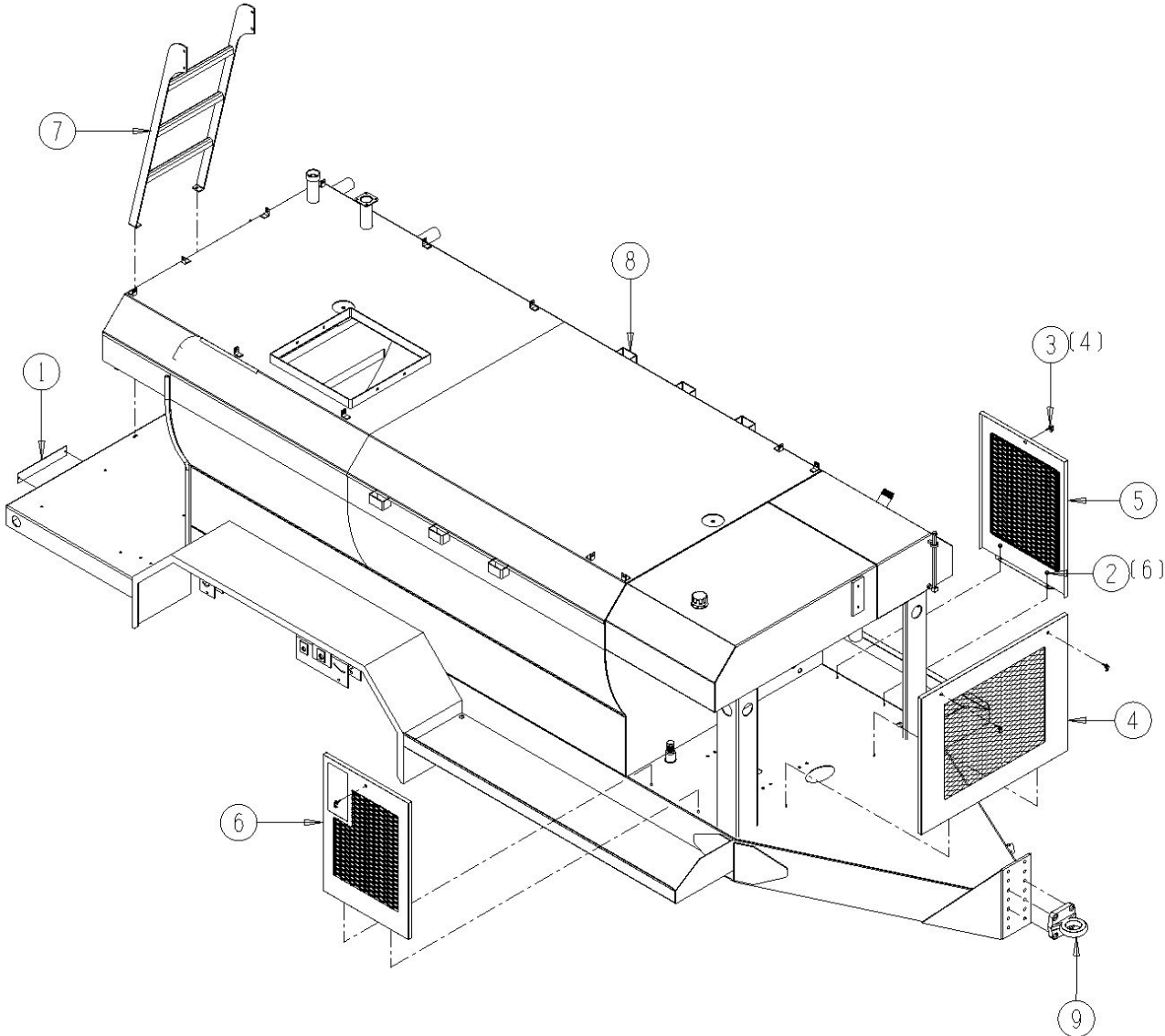
MAIN COMPONENTS	24
EHS1200-1-1 Main Frame, Trailer	24
EHS1200-1-2 Wheel & Tire, Aluminum.....	26
EHS1200-1-3 Agitator	28
EHS1200-1-4 Fresh Water Tank Components	30
EHS1200-1-5 Hose Reel: 1¼ x 145', Single Guide, Single Switch	32
EHS1200-1-6 Turret Gun & Handrail	34
EHS1200-1-7 Hatch Assembly	36
PLUMBING AND DRIVE	38
EHS1200-2-1 Plumbing	38
EHS1200-2-2 Hydraulics, Diesel Engine	40
EHS1200-2-3 Electrical, Trailer.....	44
EHS1200-2-3.1 Remote Control For Hose Reel & Pump.....	45
EHS1200-2-4 Engine Drive, Diesel.....	46
EHS1200-2-5 Product Pump: 3 x 2 -10, 1000 Series HD	48
DECAL AND MISCELLANEOUS	50
EHS1200-3-1 Decals, Trailer	50
EHS1200-3-2 Fuel Tank Components, 21 Gal. Diesel, Trailer.....	52
EHS1200-3-3 Water Fill Pump, Trailer.....	54
EHS1200-3-3.1 Less Fill Pump.....	56
EHS1200-3-4 Jack Stand.....	58
EHS1200-3-5 Hydrant Fill Pipe	60
EHS1200-3-6 Toolbox	62

MAIN COMPONENTS

EHS1200-1-1 Main Frame, Trailer

<u>Ref</u>	<u>Part No.</u>	<u>Description</u>	<u>Parts – Assembly</u>	<u>Will Fit SN</u>	<u>Remarks</u>
1	BRK-0279	Backing Plate, HydroSeeder, Mirror, Skid Mount	1		
2	EL-0020	Grommet, 3/8' id, 5/8' Groove Dia, 1/8' Groove Width	6		
3	LA-621033	Compression Latch, Natural	4		
4	PNL-0009	Panel, Front, Engine Compartment, 1200 Seeder	1		
5	PNL-0010	Panel W/A, Side, Engine Compartment, 1200 Seeder	1		
6	PNL-0012	Panel W, Side, LH, Engine Compartment, 1200 Seeder	1		
7	STP-1008	Steps, Rear, 1200 Gal. Seeder	1		
8	TAN-1200-6	1200 Gal. Seeder, 66' Dia, Trailer	1		
9	TRL-125015	Pintle Hitch, 4 Bolt Mount, 2½ ID Eye	1		
100	BL-4-N	1/4-20 HEX FIN NUTS ZC	2		
101	BL-4-LW	1/4 SPLIT LW ZC	2		
102	BL-4-FW	1/4 USS FW ZC	2		
103	BL-10-FW-8	5/8' Grade 8 Flat Washer	4		
104	BL-10-LN-8	5/8-11 HEX LN NE ZC, GR 8	4		
105	BL-10-225-H8	5/8-11 X 2 1/4' HEX CAP G8	4		
106	BL-6-FW	3/8 USS FW ZC	8		
107	BL-6-LN	3/8 UNC FIN HEX LOCK NUT NE A563 GrA ZINC	4		
108	BL-6-125-H	3/8-16 X 1 1/4 HHCS G5 ZC	4		
800	TRL-27187	Single Kit	1		
801	TRL-27188	Multi Axle Kit	1		
802	TRL-TA-D90	Spring Axle Assembly, #D90 Std, 52.4' S.C., 78' H.F., 9K	2		

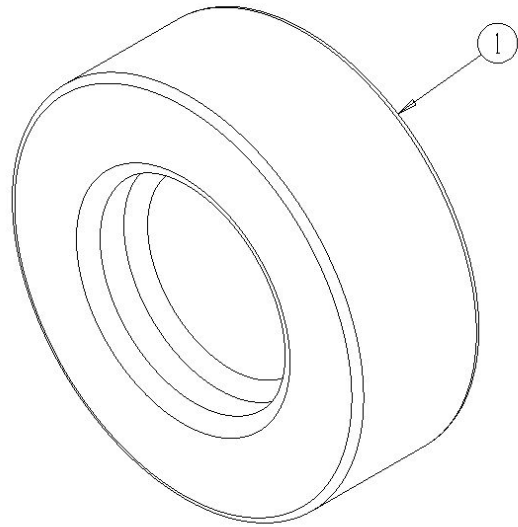
EHS1200-1-1



EHS1200-1-2 Wheel & Tire, Aluminum

<u>Ref</u>	<u>Part No.</u>	<u>Description</u>	<u>Parts – Assembly</u>	<u>Will Fit SN</u>	<u>Remarks</u>
1	WHM-TRL-25998	Mounted Trailer Tire & Wheel, Aluminum, 4.5k	4		Includes Federal Exise Tax (Tires)
801	WHL-107-AU	Wheel, Aluminum Mod, 4.5k	1		
802	WHT-989	215/75 R17.5 (H)	1		

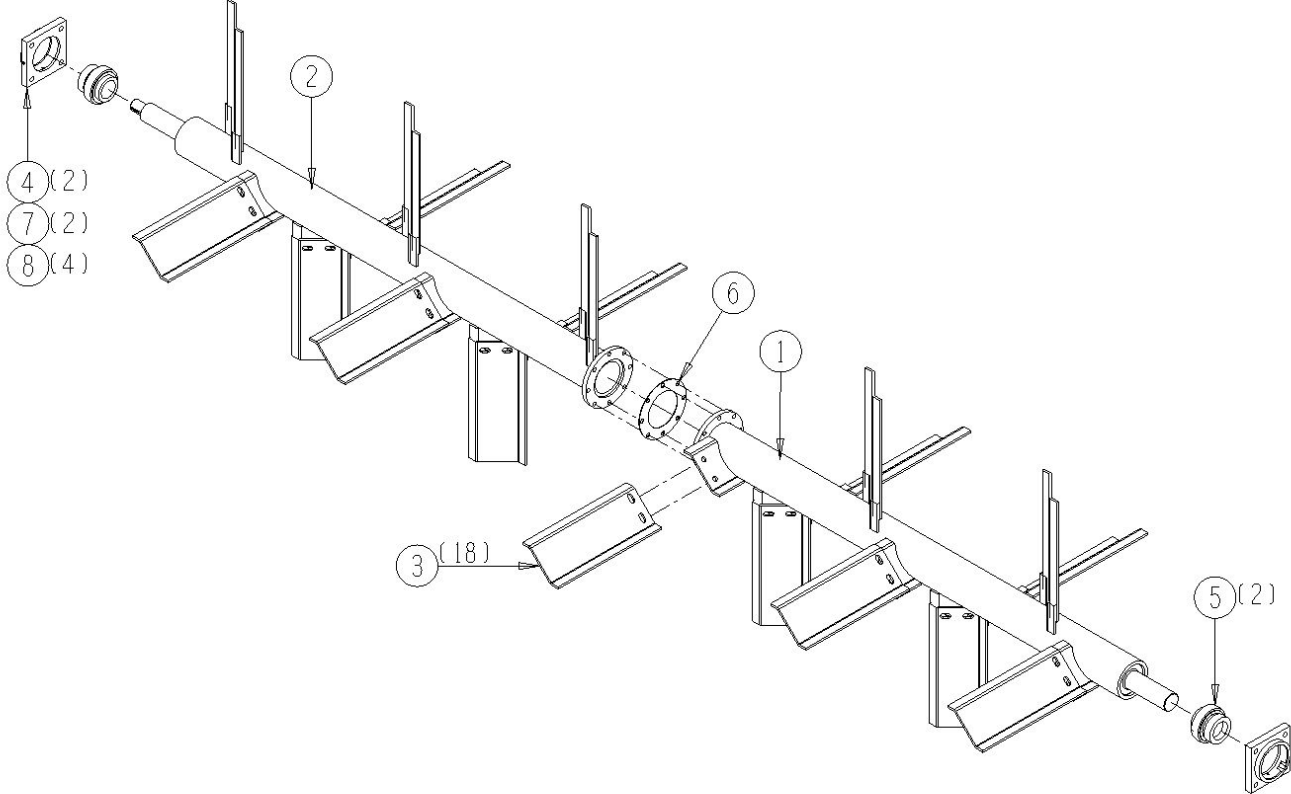
EHS1200-1-2



EHS1200-1-3 Agitator

<u>Ref</u>	<u>Part No.</u>	<u>Description</u>	<u>Parts – Assembly</u>	<u>Will Fit SN</u>	<u>Remarks</u>
1	AGT-0005	Agitator Wldmt	1		
2	AGT-0007	Agitator Shaft ,Rear, 1200 Seeder	1		
3	AGT-0009	Paddle, 1200 Seeder	18		
4	BR-100-100F	Bearing Mounting, Shaker 1995 and previous	2	19901-19525	Used with BR-175-100 bearing upgrade
5	BR-200-100	2' Fafnir Bearing, Tri-ply	2	11001	
6	FLG-04	Gasket, 4' TTMA Flange	1		
7	GF-1428	Grease Fitting 1/4' x 28 straight	2		
8	OS-32-48-5	Oil Seal, 2' ID X 3' OD x 5/16' Width	4		
100	BL-8-LN	1/2-13 HEX LOCK NUT NYLON INSERT ZC	40		
101	BL-8-SW	1/2 SAE FW ZC	8		
102	BL-8-150-H	1/2 UNC X 1 1/2 HH C/S BOLT GR5 ZINC	8		
103	BL-6-175-H	3/8-16 X 1 3/4 HHCS G5 ZC	8		
104	BL-6-FW	3/8 USS FW ZC	16		
105	BL-6-LN	3/8 UNC FIN HEX LOCK NUT NE A563 GrA ZINC	8		
106	BL-8-125-H	1/2-13 X 1 1/4 HEX CAP G5 ZC	36		
107	BL-8-FW	1/2 USS FW ZC	64		

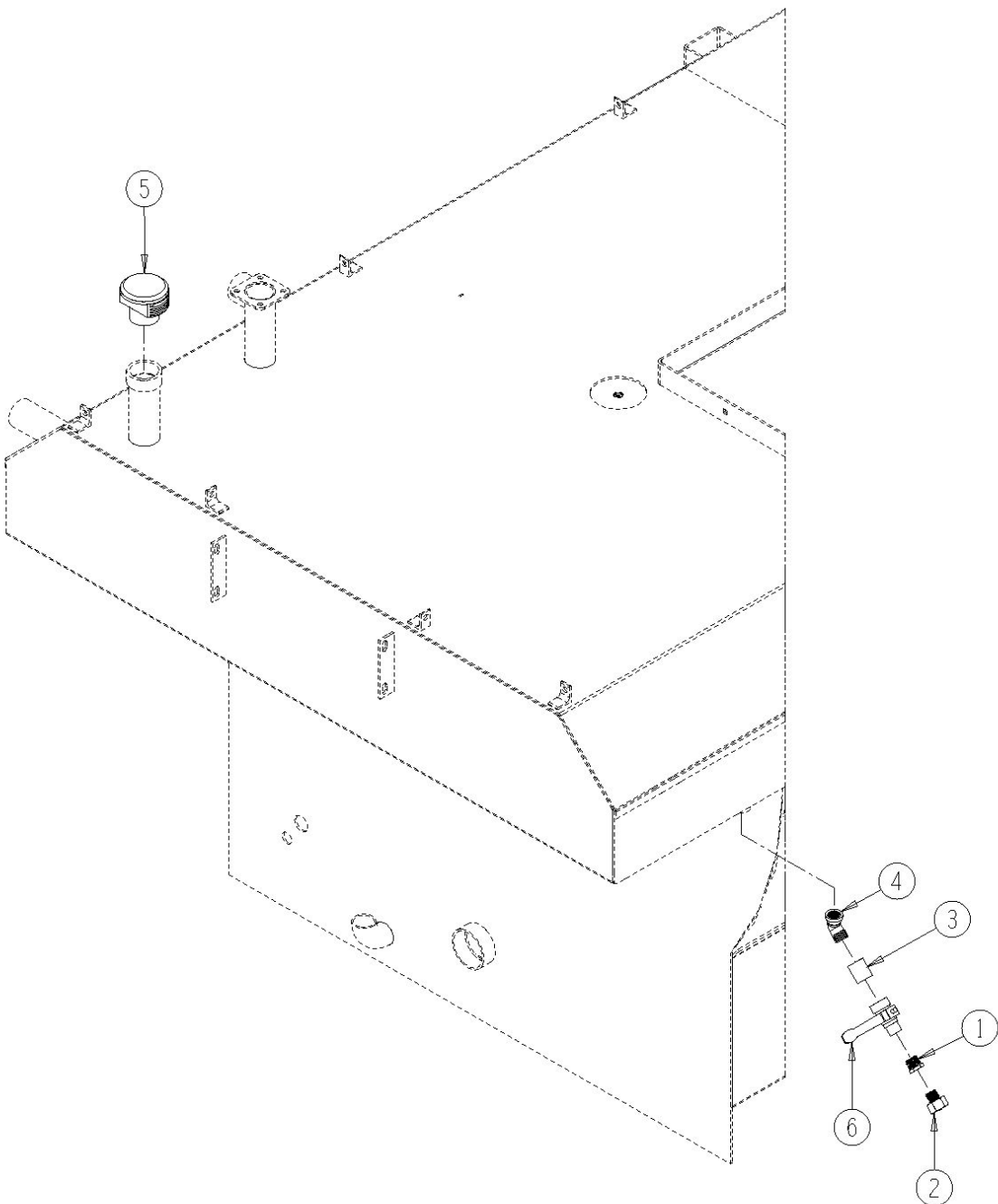
EHS1200-1-3



EHS1200-1-4 Fresh Water Tank Components

<u>Ref</u>	<u>Part No.</u>	<u>Description</u>	<u>Parts – Assembly</u>	<u>Will Fit SN</u>	<u>Remarks</u>
1	AB-12-8-B	Brass Bushing ¾ x 1/2	1		
2	AB-12G-8	Bushing, ¾ Female Garden Hose x 1/2 MPT, Garden Hose, Swivel	1		
3	AN-12-CLB	¾' Close Nipple, Brass	1		
4	ASL-12-45	¾' Street Elbow, 45°	1		
5	VC-2M	Vent Cap, 2' NPT, Glass Reinforced Polypropylene	1		
6	VLV-075-B	Valve, Ball, ¾'	1		

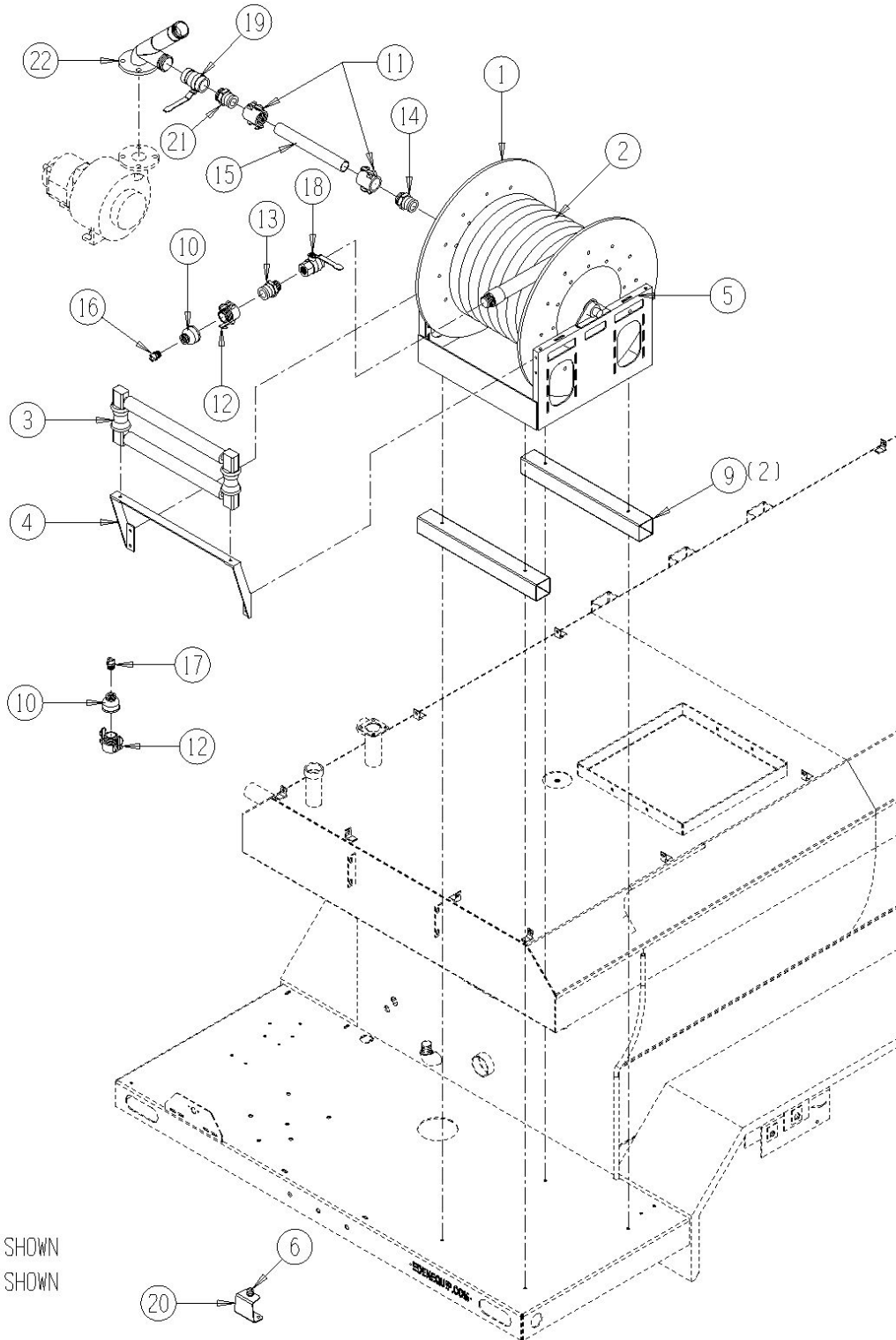
EHS1200-1-4



EHS1200-1-5 Hose Reel: 1¼ x 145', Single Guide, Single Switch

<u>Ref</u>	<u>Part No.</u>	<u>Description</u>	<u>Parts – Assembly</u>	<u>Will Fit SN</u>	<u>Remarks</u>
1	HR-3900-E-02	Reel, Hose, Fixed Base, 145'x1¼' Capacity, 12v DC Rewind	1		
2	HOSA-125-145	1 1/4' Hose Assembly, 145', Complete with Male Couplers	1		
3	HR-3900-E02-4	Double Captive Roller Assembly	1		
4	HR-3900-E02-2	Top Bracket, Roller Assembly	1		
5	HR-3900-E02-6	Pin Lock	1		
6	HR-3900-E02SW2	Switch, 12 vdc, Standard	1		
7	HR-3900-E02CB	70 Amp Circuit Breaker For Hose Reel	1	Hydroseeder	
8	HR-3900-E02CBK	Circuit Breaker Bracket	1	Hydroseeder	
9	BRK-0485	Tube, Hose Reel Support	2		
10	AR-24-12	1-1/2' x ¾' Bell Reducer	2		
11	CPL-150F-150F	Camlock Coupler, 1-1/2' Female w/ 1-1/2' Female NPT	1		
12	CPL-150F-150M	Camlock Coupler, 1½' Female w/ 1½' Male NPT	2		
13	CPL-150M-125M-P	Camlock Coupler, Poly, 1½' Male w/ 1¼' Male NPT	1		
14	CPL-2M-150M	Camlock Adapter, 2' Male x 1½' Male NPT	1		
15	HOSA-150-9	1 1/2' Hose Assembly, 9', Complete with Male Coupler	1		
16	JET-037	Nozzle, Hydroseeder, 50°, ¾' npt	1		
17	JET-038	Nozzle, Hydroseeder, 80°, ¾' npt	1		
18	VLV-125-B	Valve, Ball, 1¼', Full Port	1		
19	VLV-200-B	Valve, Ball, 2', Full Port	1		
20	BRK-0396	Hose Reel Switch Bracket, 1200 Seeder	1		
21	CPL-150M-2M	Camlock Coupler, 1½' Male w/ 2 Male NPT	1		
22	PIP-0138	Distribution Fitting, 2', 1200 Hydroseeder	1		
23	PIP-0181	Distribution Fitting, Less Hose Reel, 1200 Seeder	-1		
24	CPL-2F-150M	Camlock Coupler, 2' Female w/ 1½' Male NPT	2		
25	CPL-2M-2M	Camlock Adapter, 2' Male w/Male NPT	2		
100	BL-6-125-8	3/8-16 X 1 1/4 HH C/S GR8 ZC	4		
101	BL-6-FW-USS8	3/8 FLAT WASHER, Large OD, G8 ZC	4		
102	BL-6-LW	3/8 SPLIT LW ZC	4		

EHS1200-1-5



7 NOT SHOWN
8 NOT SHOWN

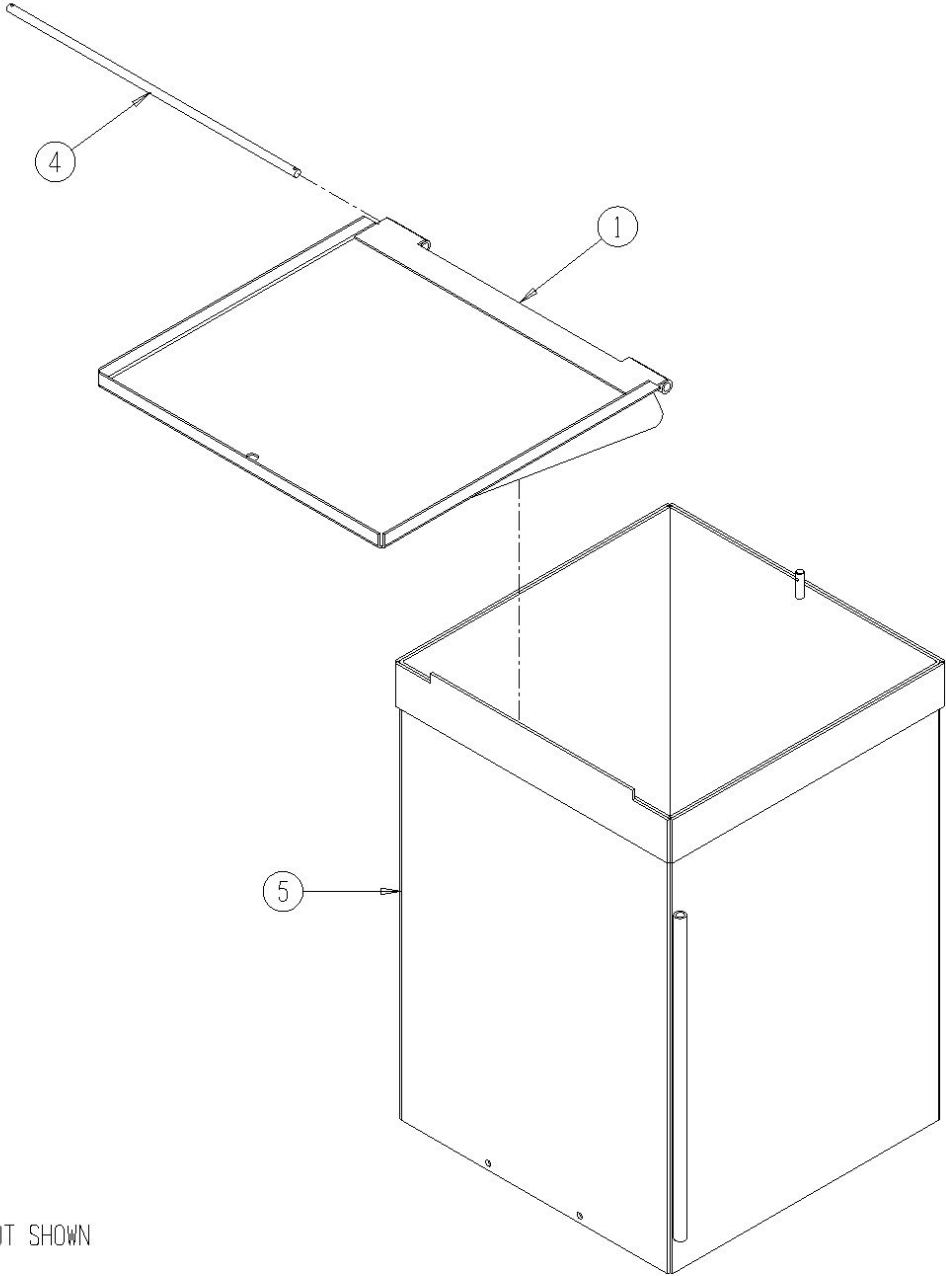
EHS1200-1-6 Turret Gun & Handrail

<u>Ref</u>	<u>Part No.</u>	<u>Description</u>	<u>Parts – Assembly</u>	<u>Will Fit SN</u>	<u>Remarks</u>
1	AN-32-CL	2' Close Fit Nipple	1		
2	AN-32-DB1	2' NPT x 2' NPSH Double Brass Hex Nipple	1		
3	BRK-0399	Control Box, Bracket, 1200 Seeder	1		
4	ch-3-65	3/16 Chain Link 65 Links	4		
5	MOU-0092	Turret Holder	1		
6	CPL-2F-2F	Camlock Coupler, 2' Female w/ 2' Female NPT	2		
8	CPL-2M-2M	Camlock Adapter, 2' Male w/Male NPT	5		
9	FLG-0005	Control Mount, Flange Gasket	1		
10	HOSA-200-37-2	2' Hose, 37 1/2' Complete with Male Couplers	1		
11	PIP-0143	Pipe W, Handle, Turret Gun, 2' Pipe	1		
12	PIP-0181	Distribution Fitting, Less Hose Reel, 1200 Seeder	1		
13	RAK-0020	Left, Rear, Handrail, 1200 Gal Seeder	1		
14	RAK-0021	Right Rear Handrail, 1200 Gal. Seeder	1		
15	RAK-0023	Front Rack, 1200 Seeder	1		
16	SJ-260	2' Swivel Joint, Double Plane, O-Ring, Style 60, NPT	1		
17	SSC-0002	Spring Snap Clip, 3/8' Opening, 380 Load Limit	8		
18	VLV-200-B	Valve, Ball, 2', Full Port	2		
19	WM-N32B	2' Brass Tapered Nozzle, NPSH Threads, 9/16' Orifice	1		
20	HG-106426	Handle Grip for Gateway Valve Handle	1		
100	BL-10-LN	5/8-11 HEX LN NE ZC	4		
101	BL-10-SW	5/8 SAE FW ZC @	8		
102	BL-8-175-H	1/2-13 X 1 3/4 HEX CAP G5 ZC	4		
103	BL-8-SW	1/2 SAE FW ZC	4		
104	BL-6-250-H	3/8-16 X 2 1/2 HH C/S GR5 ZC	10		
105	BL-6-150-H	3/8-16 X 1 1/2 HEX CAP G5 ZC	6		
106	BL-6-FW	3/8 USS FW ZC	32		
107	BL-6-LN	3/8 UNC FIN HEX LOCK NUT NE A563 GrA ZINC	20		

EHS1200-1-7 Hatch Assembly

<u>Ref</u>	<u>Part No.</u>	<u>Description</u>	<u>Parts – Assembly</u>	<u>Will Fit SN</u>	<u>Remarks</u>
1	BRK-0329	Lid, Hatch, 1200 Gal Seeder	1		
2	PIN-3-9-QRPL	Spring Loaded Pin w/ Lanyard, 3/16 x .6 Usable Length	1		
3	PIN-C2-16	Cotter Pin, 1/8' x 1'	2		
4	SFT-0023	Shaft	1		
5	SHA-0001	Seeder Hatch Assy	1		
100	BL-6-150-H	3/8-16 X 1 1/2 HEX CAP G5 ZC	4		
101	BL-6-LN	3/8 UNC FIN HEX LOCK NUT NE A563 GrA ZINC	4		
102	BL-6-FW	3/8 USS FW ZC	8		

EHS1200-1-7



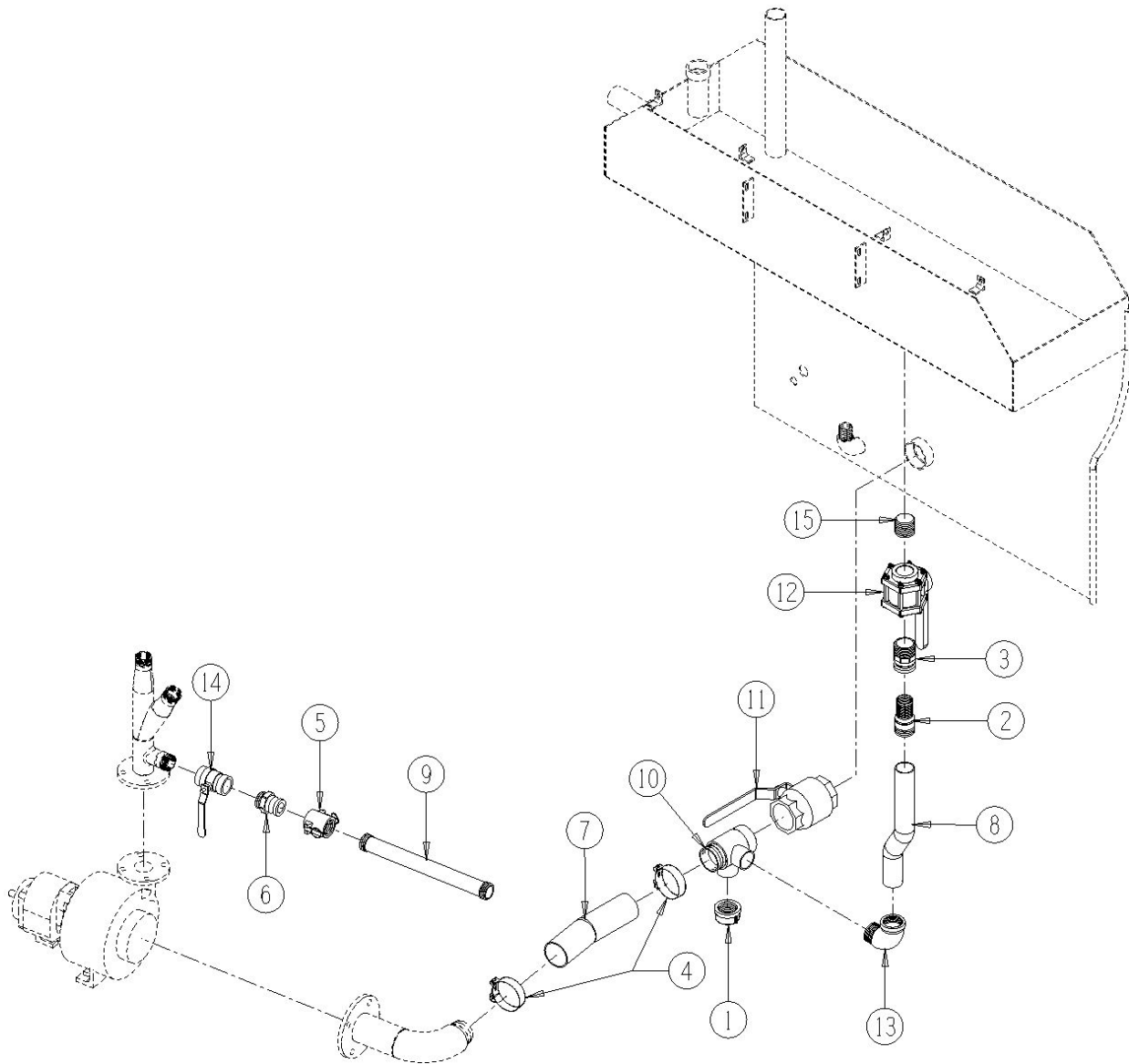
② ③ NOT SHOWN

PLUMBING AND DRIVE

EHS1200-2-1 Plumbing

<u>Ref</u>	<u>Part No.</u>	<u>Description</u>	<u>Parts – Assembly</u>	<u>Will Fit SN</u>	<u>Remarks</u>
1	ACP-32	2' Black Pipe Cap	1		
2	CPL-2F-2F	Camlock Coupler, 2' Female w/ 2' Female NPT	1		
3	CPL-2M-2M	Camlock Adapter, 2' Male w/Male NPT	1		
4	CL-375	3' Hose Clamp, Heavy Duty T-Bar, 3.375-3.75'	2		
5	CPL-150F-150F	Camlock Coupler, 1-1/2' Female w/ 1-1/2' Female NPT	1		
6	CPL-150M-150M	Camlock Adapter, 1½' Male w/Male NPT	1		
7	HOS-0013	Hose, 3' x XX', Product Suction Hose to Pump	1		
8	HOSA-200-XX3	2' Hose Assembly, XX', Complete w/ Male Couplers	1		
9	HOSA-150-XX1	1½'Hose Assembly, XX',Complete w/ Male Couplers	1		
10	PIP-0089	Pipe Assembly, Seeder, Tank Discharge Manifold, 3'	1		
11	VLV-3B	Valve, Ball, 3', Brass, Full Port	1		1043MZ from Chandler - Only if needed.
12	VLV-2-BPBF	Valve, Ball, 2', Full Port, 4 Bolt, Polypropylene, Banjo	1		
13	ASL-32	2' Street Elbow, Domestic Only	1		
14	VLV-150-B	Valve, Ball, 1½', Full Port	1		
15	AN-32-CL	2' Close Fit Nipple	1		

EHS1200-2-1



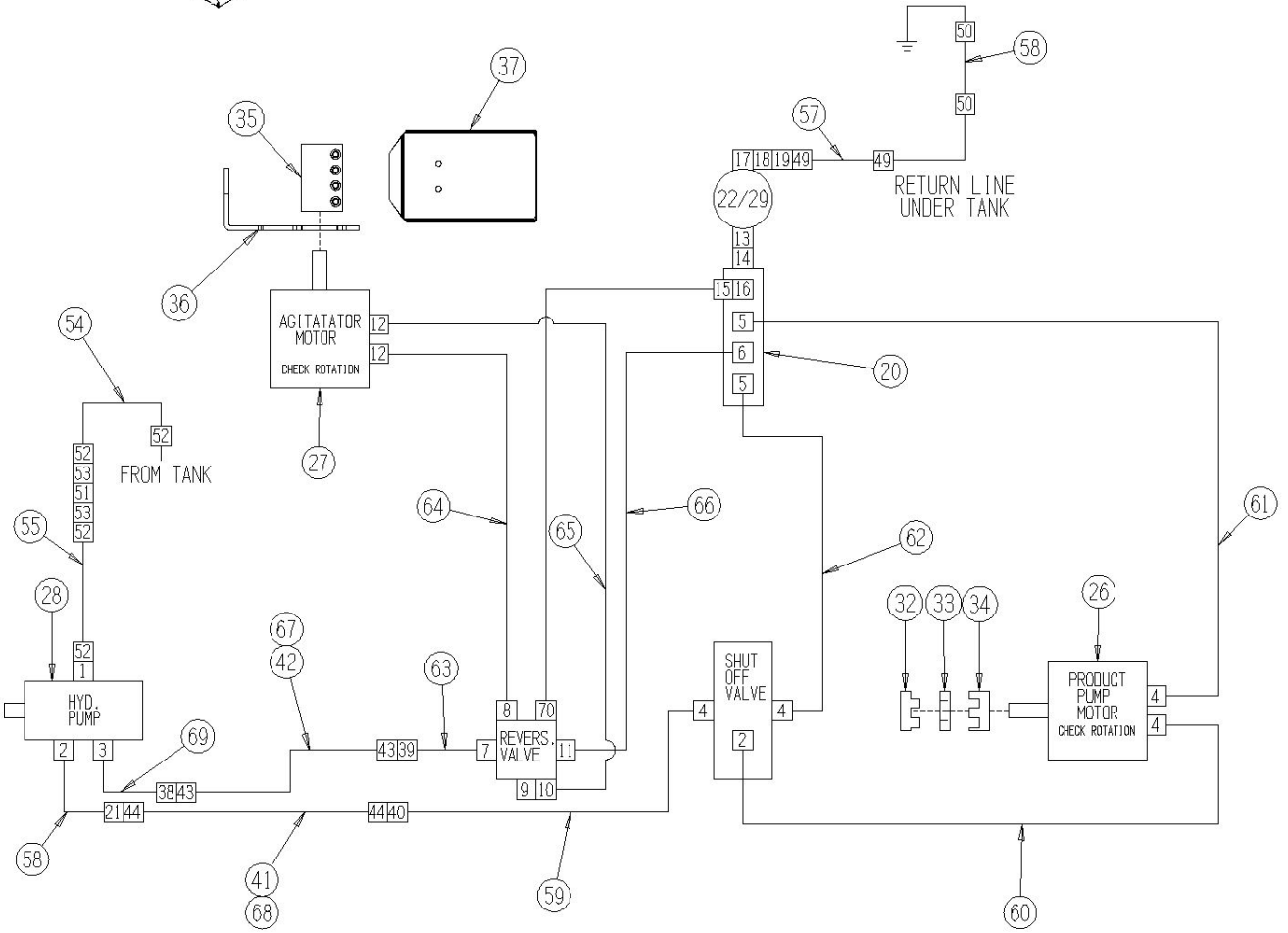
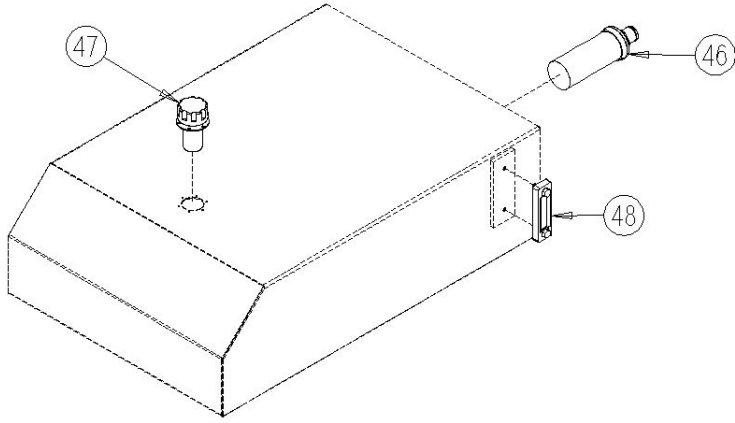
EHS1200-2-2 Hydraulics, Diesel Engine

<u>Ref</u>	<u>Part No.</u>	<u>Description</u>	<u>Parts – Assembly</u>	<u>Will Fit SN</u>	<u>Remarks</u>
1	A-4601-32-24	2' x 24 SAE 90° Male O Ring Beaded Insert	1		
2	A-6809-12-12-4SAE	12 SAE x ¾' FJX 90° w/4 SAE Port	2		
3	A-6809-10-10-4SAE	10 SAE x ½' FJX 90° w/ 4SAE PORT	1		
4	A-6809-12-12	12 SAE x ¾' FJX 90°	4		
5	A-6809-10-10	10 SAE x 5/8' FJX 90°	2		
6	A-6402-10-8	10 SAE x 1/2 FJX	2		
7	A-6809-12-8	12SAE x 1/2 FJX 90°	1		
8	A-6809-8-8	8SAE x 1/2 FJX 90°	1		
9	A-6402-8-8	8SAE x 1/2 FJX	1		
10	A-6500-8-8-4SAE	1/2 MJ x 1/2 FJX 90° w/4SAE Port	1		
11	A-6402-12-12	12SAE x ¾' FJX	1		
12	A-6810-10-10	10SAE x 5/8 FJX 45°	2		
13	A-6402-16-16	16 SAE x FJICX	1		
14	A-6801-16-16	Elbow, 1' MJ x 16 SAE	2		
15	A-4124-6-4	1/4 Male Pipe x 3/8 Push Loc	1		
16	a-6405-10-4	10 SAE x ¼' FP	1		
17	A-6806-16-16	16 SAE x 1' MP 90°	1		
18	VLV-1-B	Valve, Ball, 1'	1		
19	AN-16-20-HS	1' Male NPT with Combination 1-1/4' Hose Barb	1		
20	BRK-0300	Manifold	1		
21	a-2701-16	Elbow, Bulkhead, 1' MJ x 1' MJ	1		
22	HA-130	Hydraulic Oil Filter Base	1		
24	HVE-BA17S	Solenoid Operated Motor Valve	1		
25	HVE-C104812-PG	Valve and Controller Package / flow cntrl/directional	1		
26	HM-412-1	Hydraulic Motor	1		Same as HM-412C except w/1' shaft
27	HM-210-TC	TCI Motor	1		Seal Kit # TCI-SKHPQ
28	HP-124-175-050	Hydraulic Pump 124 x 1.75' and 1/2'	1		
29	HA-1029	Hydraulic Fluid Filter, 11'	1		

32	CPJ-6066	Coupler, L150, 1-1/4' Bore with 5/16' Keyway	1	
33	CPJ-6065	Coupler, L150, Urethane Spider, Open Center	1	
34	CPJ-6062	Coupler, L150, 1' Bore with 1/4' Keyway	1	
35	CPS-6060	Steel Coupler (offcenter) 1 1/4' x 1'	1	
36	193-806	Mount motor	1	
37	193-806C	Motor Guard	1	19301-
38	A-2701-10	Elbow, Bulkhead, 5/8' MJ x 5/8' MJ	1	
39	A-2700-10	Union, Bulkhead, 5/8' MJ x 5/8' MJ	1	
40	A-2700-16	Union, Bulkhead, 1' MJ x 1' MJ	1	
41	H-T-16-E001	Hyd. Tube, 1' Stainless, EHS1200	1	
42	H-T-10-E001	Hyd. Tube, 5/8' Stainless, EHS1200	1	
43	A-306-10	Lock Nut, Bulkhead, For 5/8' MJIC	2	
44	A-306-16	Lock Nut, Bulkhead, For 1' MJIC	2	
45	BRK-0448	Bracket, Cover, Hydraulics, 1200 Seeder	1	
46	HA-1006-5	Suction Screen, SAE 3 3/8-12UN with 2' Hose Barb	1	19904-
47	HA-0002	Filler-Strainer Breather Cap Assembly	1	
48	HA-1041	Hyd, Level Gauge & Therm	1	19201-
49	CL-125	1 1/4'Hose Clamp, Heavy Duty T-Bar, 1.5625'-1.875'	2	
50	CL-175	1 1/2' Hose Clamp, Heavy Duty T-Bar, 1.73-1.85'	6	
51	VLV-200-B	Valve, Ball, 2', Full Port	1	
52	CL-201SD	Two Bolt Hose Clamp, 2' Hose, Super Duty, Galvanized	4	
53	AN-32-HS	2' NPT, Combination Nipple/Hose Shank, 2' ID Hose	2	
54	H32-44	2' Suction Hose, 44' Long	1	
55	H32-175	2' Suction Hose, 17 1/2' Long	1	
56	h24-s-305	1 1/2' Suction Line, 30 1/2' Long	1	
57	H20-18	1 1/4' Suction Hose, 18 1/4' Long	1	
58	H12-65-12MJ-16FJX	3/4 in Hose 3/4MJ x 1FJX x 65 in Long	1	
59	H12-30-16FJX-12MJ	3/4 in hose 1FJX x 3/4MJ x 29 3/4 in long	1	
60	H12-15-10MJ-12MJ	3/4 in hose 5/8MJ x 3/4MJ x 14.5 in long	1	
61	H12-49-12MJ-10MJ	3/4 in hose 3/4MJ x 5/8MJ x 49 1/4 in long	1	

62	H12-27-12MJ-10MJ	¾ in hose ¾MJ x 5/8MJ x 26¾ in long	1	
63	H10-32-10FJX-8MJ	5/8 in Hose 5/8FJX x ½MJ x 32½ in Long	1	
64	H10-47-8MJ-10MJ	5/8 in Hose ½MJ x 5/8MJ x 46¾ in Long	1	
65	H10-49-8MJ-10MJ	5/8 in Hose ½MJ x 5/8MJ x 49½ in Long	1	
66	H10-22-12MJ-8MJ	5/8 in Hose ¾MJ x ½MJ x 22¼ in Long	1	
67	HA-1062-H	Hydra-zorb Tube Clamp 5/8' (3 pc.)	1	
68	HA-1071-H	Hydra-zorb Tube Clamp 1' (3 pc.)	1	19401-
69	H10-62-10MJ-10FJX	5/8 in Hose 5/8MJ x 5/8FJX x 62 in Long	1	
70	A-4124-6-2	1/8 Male Pipe x 3/8 Push Loc	1	HV-1045K
100	BL-6-FWSS	3/8 USS FW SS	8	
101	BL-5-LW	5/16 SPLIT LW ZC	2	
102	BL-5-FW-8	5/16 USS FLAT WASHER GR8 YEL ZINC	2	
103	BL-5-100-H	5/16 UNC X 1 HH C/S BOLT GR5 ZINC	2	
104	BL-6-SW	3/8 SAE FW ZC	8	
105	BL-6-LN	3/8 UNC FIN HEX LOCK NUT NE A563 GrA ZINC	8	
106	BL-6-125-H	3/8-16 X 1 1/4 HHCS G5 ZC	8	

EHS1200-2-2



EHS1200-2-3 Electrical, Trailer

<u>Ref</u>	<u>Part No.</u>	<u>Description</u>	<u>Parts – Assembly</u>	<u>Will Fit SN</u>	<u>Remarks</u>
0	ACT-01-25-02	Actuator, 2' Stroke, 12vdc, 25 lb Capacity	1		
0	ELL-24-120	1 1/2' PVC Conduit @ Foot	0.5		
0	TRL-B241	Breakaway Switch w/ Cable Only, New Style	1		
0	TRL-97960	Document Holder, Smoke Cover, Kit	1		
0	ENT-04012	Engine Tachometer Guage with Hour Meter	1		
0	ENGA-04T	Battery Terminal Clamp	2	ENGA-04	
0	ENGA-04BB	Battery Box	1	ENGA-04	
0	ENGA-04	Battery, 675 CCA	1	Model 1200- HS	
0	ELL-24N	PVC Lock Nut, 1 1/2'	1		
0	ELL-24A	PVC Male Adapter, 1 1/2'	1		
0	ELE-0003	Enclosure, Control Box, 14Ga Steel, Hinged, Sloped	1		
0	EL-37677	Plug, Trailer, 7 Way Flat Pin	1		
0	EL-1276	Light, Marker, L.E.D., TL33, Red, Kit	3		
0	EL-1257	Light, STT, L.E.D., TL60, Red, Lamp/Grommet Kit	2		
0	EL-1254	Light, License Lamp Kit, L.ED., Grey	1		
0	EL-1247	Light, Mkr, L.E.D., TL10, Yellow, 2½'	4		
0	EL-1246	Light, Mkr, L.E.D., TL10, Red, 2½'	2		
0	EL-1227	Reflector, Rectangle, Red, 2x3.5, Adhesive	4		
0	EL-1226	Reflector, Rectangle, Yellow, 2x3.5, Adhesive	4		
0	ELE-2016	Control Box for Dual Remote	1		Polycarbonate Enclosure with Lid

EHS1200-2-3.1 Remote Control For Hose Reel & Pump

<u>Ref</u>	<u>Part No.</u>	<u>Description</u>	<u>Parts – Assembly</u>	<u>Will Fit SN</u>	<u>Remarks</u>
0	HR-3900-E02CBK	Circuit Breaker Bracket	-1	Hydroseeder	
0	RVCD200H	Remote Control Unit, Eden Equipment, 2 Function	1		
0	HR-3900-E02CB	70 Amp Circuit Breaker For Hose Reel	-1	Hydroseeder	

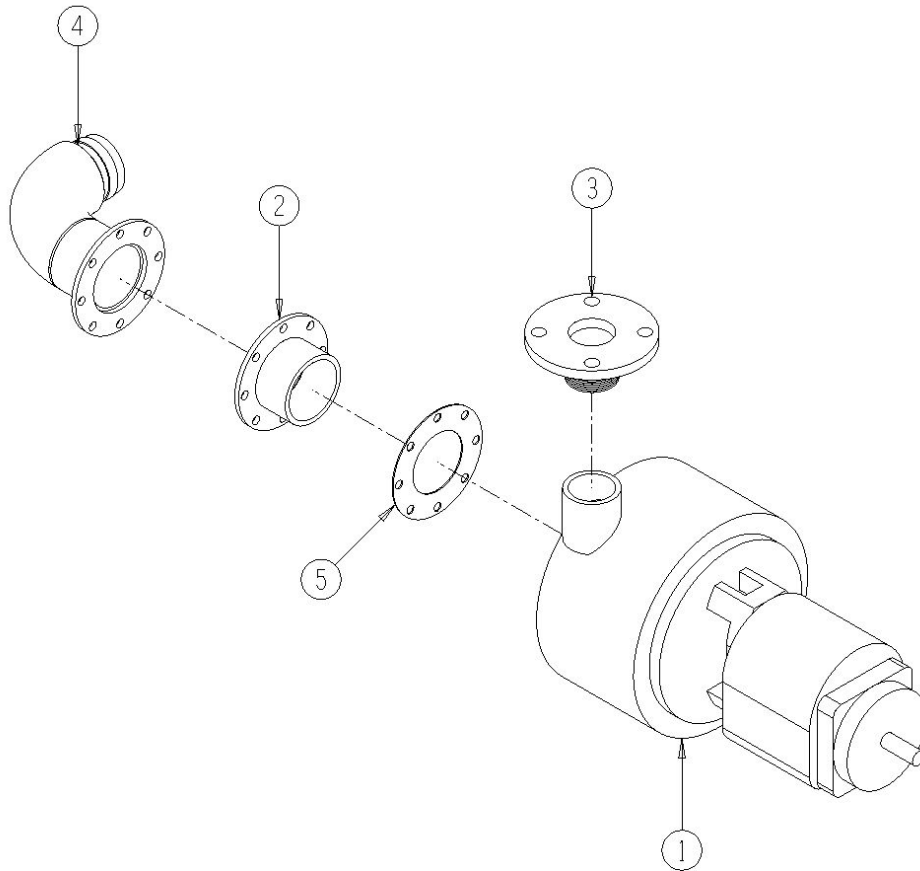
EHS1200-2-4 Engine Drive, Diesel

<u>Ref</u>	<u>Part No.</u>	<u>Description</u>	<u>Parts – Assembly</u>	<u>Will Fit SN</u>	<u>Remarks</u>
0	ENG-18-ES-SP	Engine, 48hp Kubota Diesel, V2203M, Electric Start, Control Panel	1		
0	RLR-0010	Rubber Mount, Engine, 1200 Seeder	2		
0	RLR-0011	Rubber Mount, Engine, 1200 Seeder	2		
0	PIP-0226	Pipe Wldmt, Muffler Extension, 1200 Seeder	1		
0	MUF-0002	Exhaust Hanger - Universal	1		
0	BRK-0471	Mount, Throttle Control, Actuator Mount, 1200	1		

EHS1200-2-5 Product Pump: 3 x 2 -10, 1000 Series HD

<u>Ref</u>	<u>Part No.</u>	<u>Description</u>	<u>Parts – Assembly</u>	<u>Will Fit SN</u>	<u>Remarks</u>
1	PMP-1207	Hydroseeder Pump 3x2-10, 1000 Series HD Frame RH Rotation	1		
2	FLA-03-1	Flange Assy, 3' Aluminum, TTMA w/ MPT	1		
3	FLA-02-01	Pipe Wldmt, Pump Discharge Adapter, 1200	1		
4	PIP-0174	Pump Fill Fitting, 1200 Seeder	1		
5	FLG-05	Gasket, 3' TTMA Flange	1		
100	BL-8-200-C	1/2-13 x 2 CARRIAGE BOLT GR5 ZINC	3		
101	BL-8-FW	1/2 USS FW ZC	11		
102	BL-8-250-H	1/2-13 X 2 1/2 HEX CAP G5 ZC	4		
103	BL-8-LN	1/2-13 HEX LOCK NUT NYLON INSERT ZC	4		
104	BL-8-LW	1/2 SPLIT LW ZC	3		
105	BL-8-N	1/2-13 HEX FIN NUTS ZC	3		

EHS1200-2-5

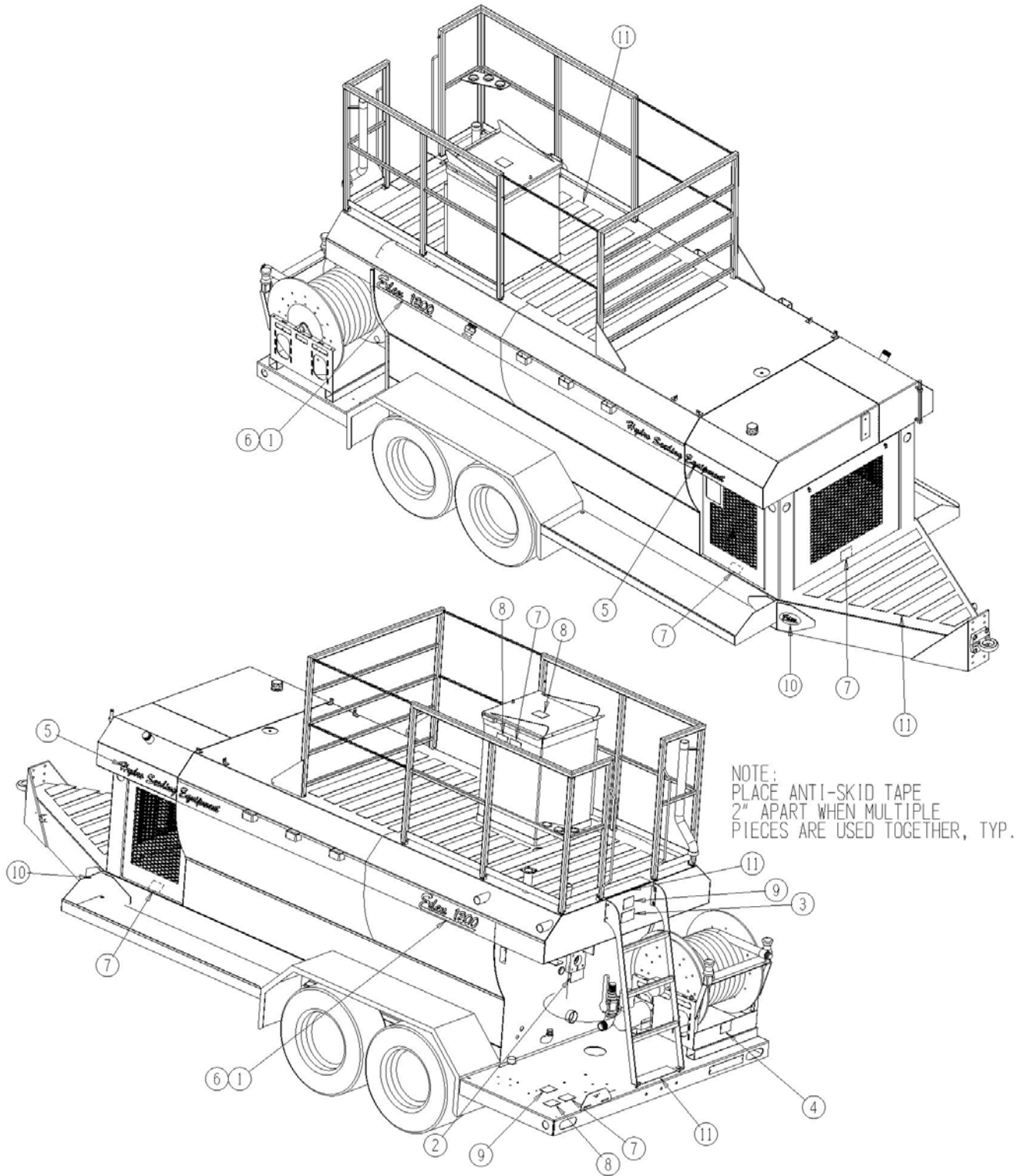


DECAL AND MISCELLANEOUS

EHS1200-3-1 Decals, Trailer

<u>Ref</u>	<u>Part No.</u>	<u>Description</u>	<u>Parts – Assembly</u>	<u>Will Fit SN</u>	<u>Remarks</u>
1	DC-0059	Decal, 5.875' x 22', Eden Equipment Built by PR	2		
2	DC-5801	Danger Decal, Rotating Components	1		
3	DC-1180	Serious Injur/Death Decal, Read Manual	2		
4	DC-1174	Decal, Danger Keep Hands and Feet Away	1		
5	DC-0076	Decal, Hydro Seeding Equipment, 4.5' x 40'	2		
6	DC-0069	Decal, Model 1200, Eden Equipment	2		
7	DC-0029	Decal, Danger, Guard Missing Do Not Operate	5		
8	DC-0025	Decal, Danger, Entanglement In Rotating Drive	3		
9	DC-0023	Decal, Caution, Keep All Shields In Place	2		
10	DC-0061	Decal, 3.875' x 7', Eden Equipment Oval	2		
11	DC-460	Black Sparkle Antiskid Tape, 4" x 60'	1.167		

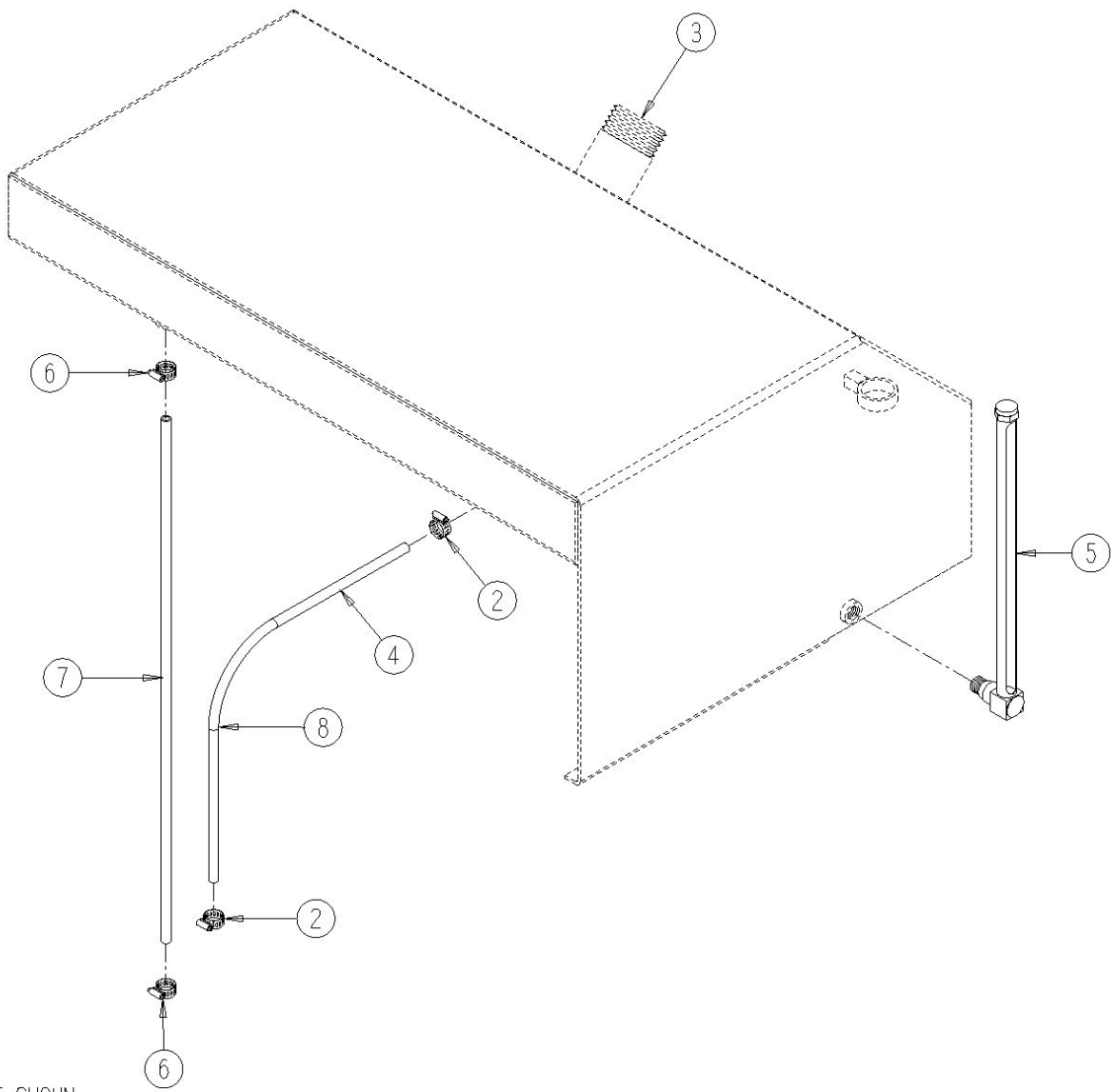
EHS1200-3-1



EHS1200-3-2 Fuel Tank Components, 21 Gal. Diesel, Trailer

<u>Ref</u>	<u>Part No.</u>	<u>Description</u>	<u>Parts – Assembly</u>	<u>Will Fit SN</u>	<u>Remarks</u>
1	A-4124-4-4	1/4 Male Pipe x 1/4 Push Loc	2		
2	CL-506	5/16' Band Width Worm Gear Clamp, Clamping Range 5/16 - 7/8' SS	4		
3	FC-32	2' Vented Fuel Cap with Crossbar Chain	1		
4	HOS-025-F	1/4' I.D., Fuel Hose @ ft.	4		
5	LI-0007	Liquid-Level Gauge, 3/8 npt, 14 1/4'	1		
6	CL-503	5/16' Band Width Worm Gear Clamp, Clamping Range 1/8 - 5/16	2		
7	HOS-018-F	3/16' I.D., Fuel Hose @ ft.	6		
8	VLV-025-FSO	Fuel Shut Off Valve, 1/4' Line	1		

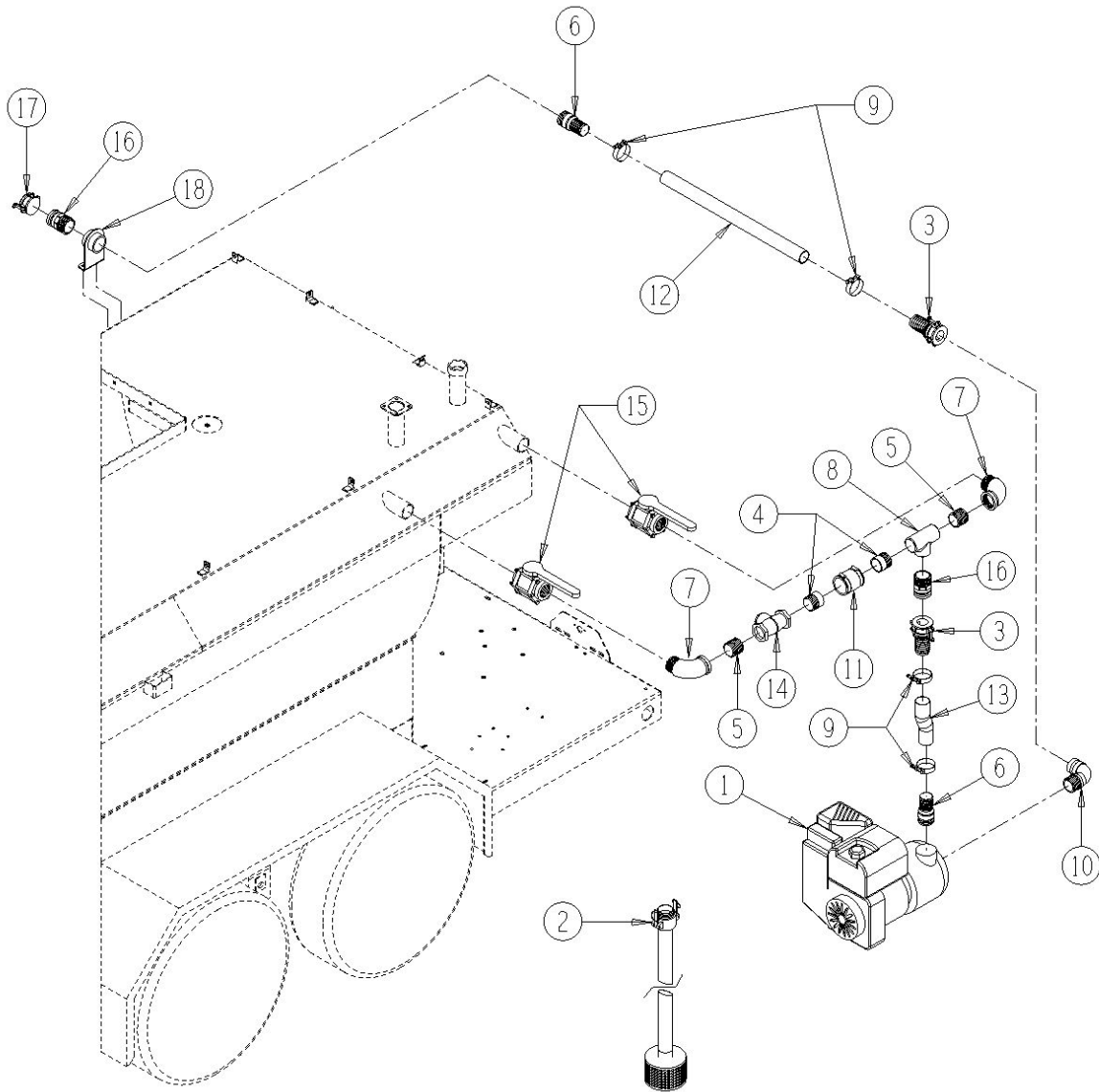
EHS1200-3-2



EHS1200-3-3 Water Fill Pump, Trailer

<u>Ref</u>	<u>Part No.</u>	<u>Description</u>	<u>Parts – Assembly</u>	<u>Will Fit SN</u>	<u>Remarks</u>
1	ENG-14	Engine, Water Pump, 5.5hp, 2'	1		
2	HOSA-0017	2' Fill Hose, 25' w/ Camlock Fittings & Strainer	1		
3	CPL-2F-H	Camlock Coupler, 2' Female w/ Hose Shank	2		
4	AN-32-64-5	2' Half Nipple, 2' Long After Cut	2		
5	AN-32-CL	2' Close Fit Nipple	2		
6	AN-32-HS	2' NPT, Combination Nipple/Hose Shank, 2' ID Hose	2		
7	ASL-32	2' Street Elbow, Domestic Only	2		
8	AT-32-32-32	2 x 2 x 2 Black Tee	1		
9	CL-225	2 1/4' T-Bolt Clamp	4		
10	CPL-2M-2M-LPY	Camlock Elbow, 2' Male w/ Male NPT, Poly	1		
11	CPL-F-200	Coupling, Flexible, Pipe Size 2' to 2', Pipe Connector	1		
12	HOS-0015	Hose, 2' x XX' Fill Line, 2nd	1		
13	HOS-0016	Hose, 2' x XX' Fill Line, 1st	1		
14	HV-CKV-200S	2' Swing Check Valve	1		
15	VLV-2-BPBF	Valve, Ball, 2', Full Port, 4 Bolt, Polypropylene, Banjo	2		
16	CPL-2M-2M	Camlock Adapter, 2' Male w/Male NPT	2		
17	CPL-2-CP	Camlock Dust Cap, 2' Female	1		
18	BRK-0456	Bracket, Fill Hose, Water Pump, Seeder	1		
19	OIL-SAE30-D	SAE-30 Detergent Oil	1		

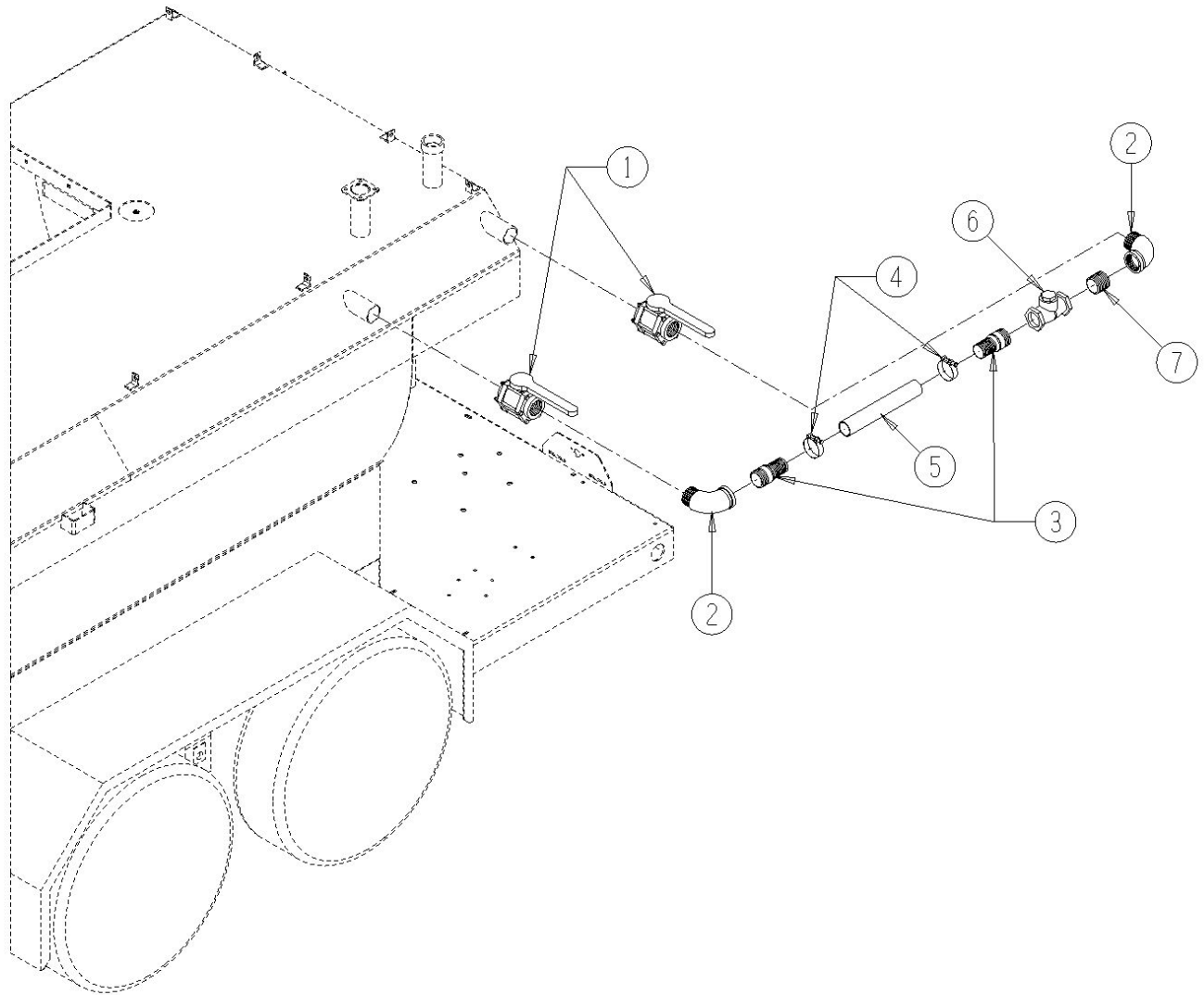
EHS1200-3-3



EHS1200-3-3.1 Less Fill Pump

<u>Ref</u>	<u>Part No.</u>	<u>Description</u>	<u>Parts – Assembly</u>	<u>Will Fit SN</u>	<u>Remarks</u>
1	VLV-2-BPBF	Valve, Ball, 2', Full Port, 4 Bolt, Polypropylene, Banjo	2		
2	ASL-32	2' Street Elbow, Domestic Only	2		
3	AN-32-HS	2' NPT, Combination Nipple/Hose Shank, 2' ID Hose	2		
4	CL-225	2 1/4' T-Bolt Clamp	2		
5	HOS-0017	Hose, 2' x XX' Fill Line, Water to Product, No Fill	1		
6	HV-CKV-200S	2' Swing Check Valve	1		
7	AN-32-CL	2' Close Fit Nipple	1		

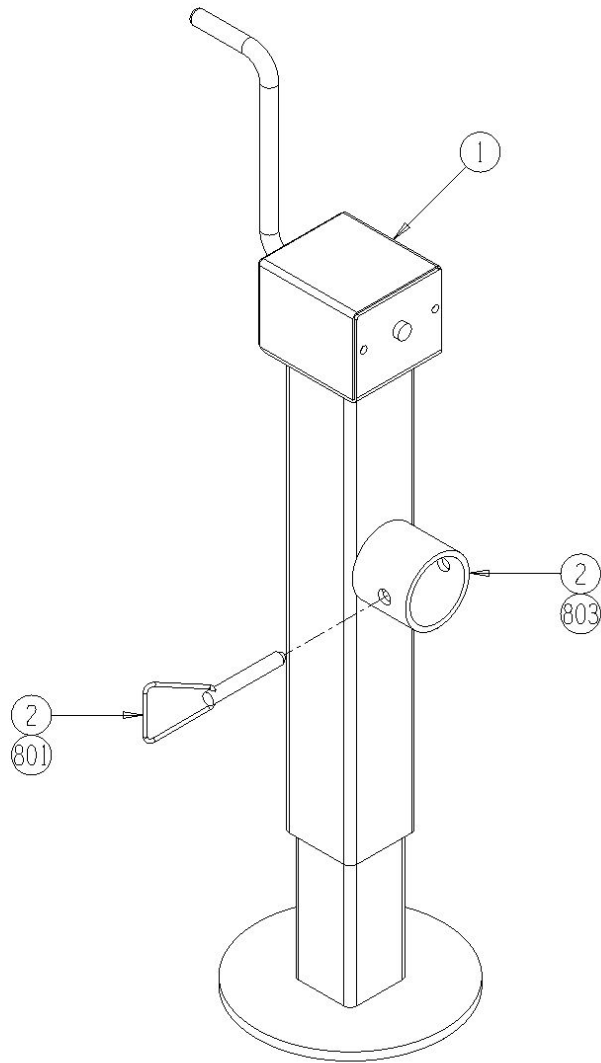
EHS1200-3-3.1



EHS1200-3-4 Jack Stand

<u>Ref</u>	<u>Part No.</u>	<u>Description</u>	<u>Parts – Assembly</u>	<u>Will Fit SN</u>	<u>Remarks</u>
1	WH-16216	Jack Weldment, Sidewind Jack, 9,000 lb.	1	71009002- 70209006-	
2	WH-16402	Sleeve Kit, Spreader, 9k	1	WH-16215 -71009001	
801	WH-16402-A	Pin & Chain Assembly for WH-16402	1	71009002-	
802	WH-16402-B	Weld-On Hub, Implement Side, For WH-16402	1	WH-16215 71009002-	
803	WH-16402-C	Weld-On Hub, Jack Side, For WH-16402	1	71009002-	

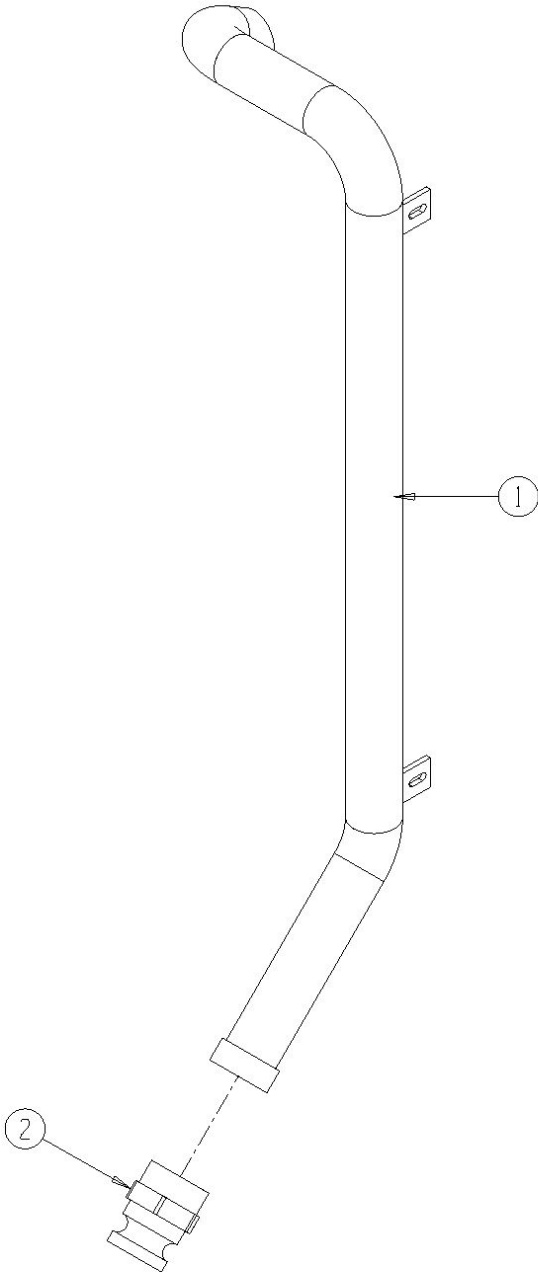
EHS1200-3-4



EHS1200-3-5 Hydrant Fill Pipe

<u>Ref</u>	<u>Part No.</u>	<u>Description</u>	<u>Parts – Assembly</u>	<u>Will Fit SN</u>	<u>Remarks</u>
1	PIP-0179	Hydrant Fill Pipe, 1200 Seeder	1		
2	CPL-2M-2F	Camlock Adapter, 2' Male w/ Female NPT	1		
100	BL-6-250-H	3/8-16 X 2 1/2 HH C/S GR5 ZC	2		
101	BL-6-FW	3/8 USS FW ZC	4		
102	BL-6-LN	3/8 UNC FIN HEX LOCK NUT NE A563 GrA ZINC	2		

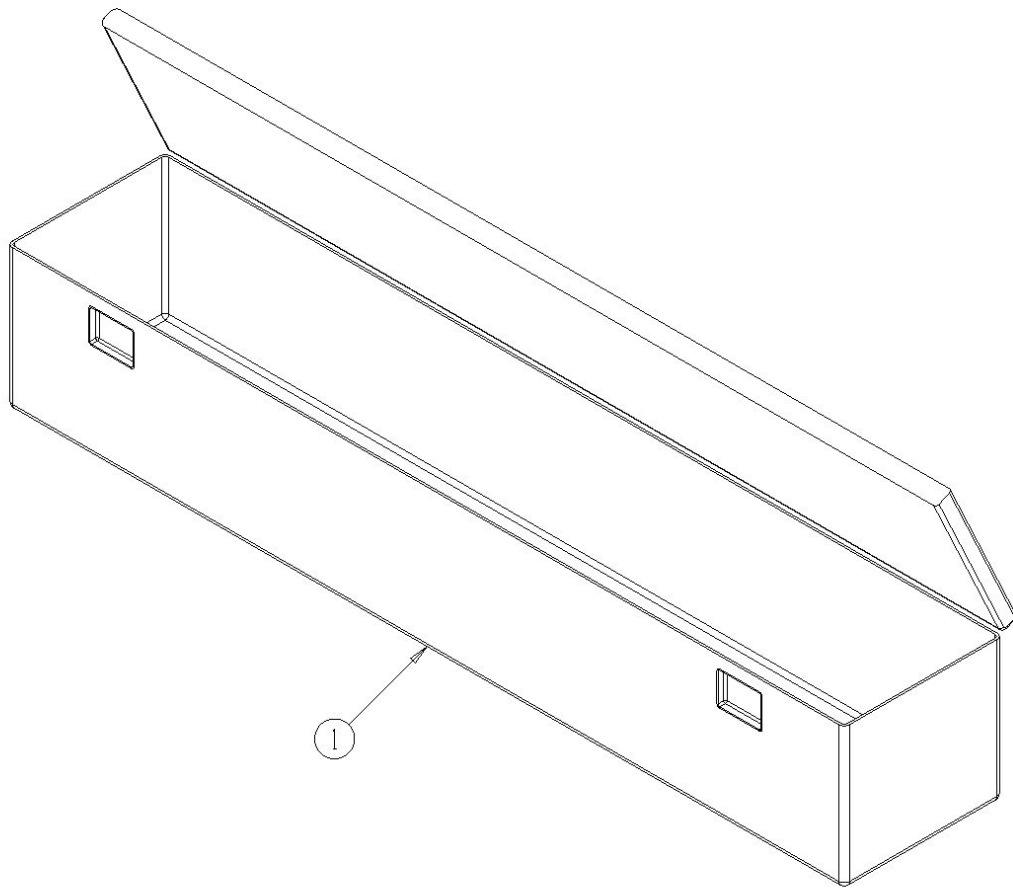
EHS1200-3-5



EHS1200-3-6 Toolbox

<u>Ref</u>	<u>Part No.</u>	<u>Description</u>	<u>Parts – Assembly</u>	<u>Will Fit SN</u>	<u>Remarks</u>
1	TBX-0022	Toolbox, Alum, Diamond Plt Lid, See Drawing	1		

EHS1200-3-6





OPERATIONS & PARTS

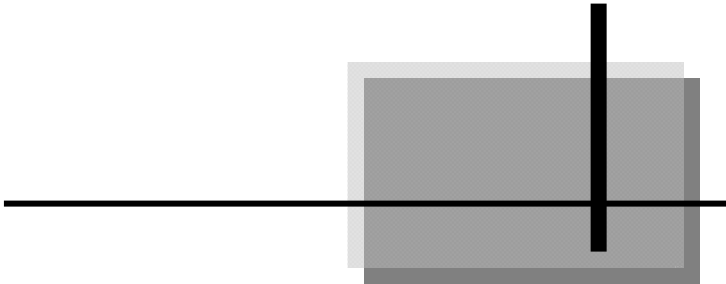
EDEN 1200

HYDROSEEDER EQUIPMENT



Pik Rite, Inc
60 Pik Rite Lane
Lewisburg, PA 17837
Ph. 800-326-9763
Fx. 570-523-8175
www.pikrite.com

4/22/10





EDEN EQUIPMENT 1200 HYDROSEEDER

(SPECIFICATIONS AND DESIGN SUBJECT TO CHANGE WITHOUT NOTICE)

- INTRODUCTION -



This safety alert symbol identifies important safety messages in this manual. When you see this symbol, be alert to the possibility of personal injury and carefully read the message that follows.

Record your seeder serial number in the space provided below:

S. N. _____

Purchase Date

Operators Manual

- TABLE OF CONTENTS -

SECTION 1	7
SAFETY	8
Recognize Safety Information	8
Understand Signal Words	8
Follow Safety Instructions	9
Prepare for Emergencies	9
Wear Protective Clothing.....	10
Protect Against Noise.....	10
Handle Chemical Products Safely	11
Stay Clear of Rotating Drivelines	11
Practice Safe Maintenance	12
Remove Paint Before Welding or Heating.....	13
Avoid Heating Near Pressurized Fluid Lines.....	13
Avoid High-Pressure Fluids.....	14
SECTION 2	15
PREPARATION, OPERATION & MAINTENANCE	16
2 - 1: Preparing Your Seeder for Operation	16
2 - 2: Operators Instructions.....	17
Matching Speed to Desired Performance	17
Agitation	17
The Product Pump	17
Choosing Application Method	18
The Hose Reel	18
Filling The Tank	18
Flushing	19
2 - 3: Hydraulic System Requirements.....	19
Hydraulic Fluids.....	19
2 - 4: Maintenance of the Seeder	19
Winterization.....	19

Section 1
SAFETY

SAFETY

The operator's safety is one of the prime considerations in the minds of Pik Rite engineers when designing Pik Rite equipment. Shielding, simple adjustments, and other safety features were built into your seeder.

WARNING: Modifications to the equipment may adversely affect its safety features as well as its efficiency and longevity.

Recognize Safety Information

This is the safety-alert symbol. When you see this symbol on your machine or in this manual, be aware of the potential for personal injury.

Follow recommended precautions & safe operating practices.



Understand Signal Words

A signal word—DANGER, WARNING or CAUTION—is used with the safety-alert symbol.

- DANGER identifies the most serious hazards.
- DANGER or WARNING safety signs are located near specific hazards. General precautions are listed on CAUTION safety signs.



Follow Safety Instructions

Carefully read all safety messages in this manual and on your machine safety signs.

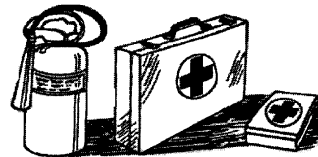
- Keep safety signs in good condition.
- Replace missing or damaged safety signs.
- Be sure that all new equipment components and repair parts include the current safety signs. *Replacement safety signs are available from Pik Rite.*
- **Learn how to operate the machine and how to use controls properly.**
CAUTION: *Do not allow anyone to operate your machine without instruction.*
- Keep your machine in proper working condition. Unauthorized modifications to the machine may impair function and/or safety and affect machine life.

NOTE: *If you do not understand any part of this manual and need assistance, please contact your Pik Rite representative.*

Prepare for Emergencies

Be prepared if a fire starts.

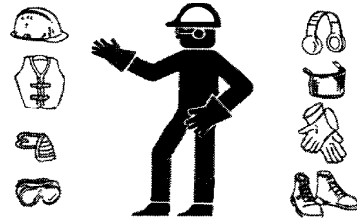
- Keep a first aid kit and fire extinguisher handy.
- Keep emergency numbers for the ambulance service, hospital, fire department, and doctors near your telephone.



Wear Protective Clothing

- Wear close fitting clothing and safety equipment appropriate to the job.

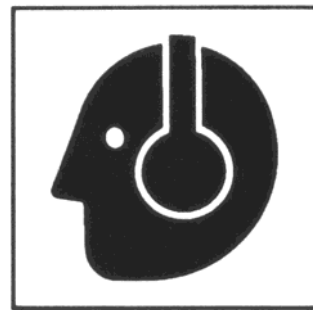
CAUTION: *Do not wear radio or music headphones while operating machine. Operating equipment safely requires the full attention of the operator.*



Protect Against Noise

WARNING: Prolonged exposure to loud noise can cause impairment or loss of hearing.

- Wear a suitable hearing protective device such as earmuffs or earplugs to protect against objectionable or uncomfortable loud noises.

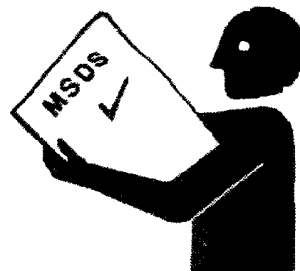


Handle Chemical Products Safely

WARNING: Direct exposure to hazardous chemicals can cause serious injury. Potentially hazardous chemicals used with Pik Rite equipment include *lubricants* and *paints*.

- A Material Safety Data Sheet (MSDS) provides specific details on chemical products: physical and health hazards, safety procedures, and emergency response techniques.
- Check the MSDS before you start any job using a hazardous chemical. That way you will know exactly what the risks are and how to do the job safely. Then follow the advised procedures and make use of the recommended equipment.

NOTE: Contact the Pik Rite Lewisburg, PA office for MSDS on chemical products used with Pik Rite equipment.



Stay Clear of Rotating Drivelines

WARNING: Entanglement in rotating driveline can cause serious injury or death.

- Keep the driveline shields in place at all times. Make certain that rotating shields turn freely.
- Wear close fitting clothing. Stop the engine and be sure that the PTO drive line is stopped before making adjustments, connections, or cleaning out the PTO-driven equipment.



Practice Safe Maintenance

Understand service procedure before doing work. Maintain cleanliness and dryness in work area.

- Never lubricate or service the machine while it is in motion.

WARNING: Be sure to keep hands, feet, and clothing away from power-driven parts.

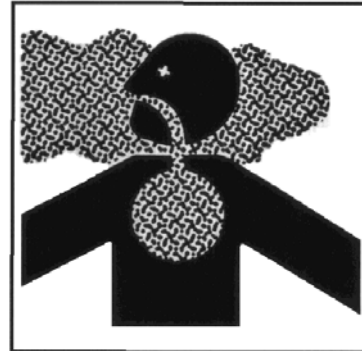
1. Disengage all power and manipulate controls to relieve pressure.
 2. Lower equipment to the ground.
 3. Stop the engine.
 4. Remove the key.
 5. Allow machine to cool.
- Securely support any machine elements that must be raised for service work.
 - Keep all parts in good condition and properly installed. Fix damage immediately. Replace worn or broken parts. Remove any buildup of grease, oil, or debris.
 - Disconnect battery ground cable (-) and unplug main power supply cord before making adjustments on electrical systems or welding on machine.



Remove Paint Before Welding or Heating

WARNING: Avoid potentially toxic fumes and dust. Hazardous fumes can be generated when paint is heated by welding, soldering or using a torch.

- Do all work outside or in a well-ventilated area. Dispose of paint and solvent properly.
- Remove paint before welding or heating.
- If you sand or grind paint, avoid breathing the dust. Wear an approved respirator.
- If you use solvent or paint stripper, remove stripper with soap and water before welding.
- Remove solvent or paint stripper containers and other flammable material from the area.
- Allow fumes to disperse at least 15 minutes before welding or heating.



Avoid Heating Near Pressurized Fluid Lines

WARNING: Flammable spray can be generated by heating near pressurized fluid lines, resulting in severe burns to you and bystanders.

- Do not heat by welding, soldering, or using a torch near pressurized fluid lines or other flammable materials. Pressurized lines can be accidentally cut when heat goes beyond the immediate flame area.



Avoid High-Pressure Fluids

WARNING: Fluid escaping under pressure carries the potential to penetrate the skin resulting in serious injury.

- Avoid this hazard by relieving pressure before disconnecting hydraulic or other lines. Tighten all connections before applying pressure.
- Search for leaks with a piece of cardboard.
- Protect hands and body from high-pressure fluids.
- If an accident occurs, see a doctor immediately.



WARNING: Any fluid injected into the skin must be surgically removed within a few hours or gangrene may result. Doctors unfamiliar with this type of injury should reference a knowledgeable medical source.

Section 2
PREPARATION, OPERATION & MAINTENANCE

PREPARATION, OPERATION & MAINTENANCE

2 - 1: Preparing Your Seeder for Operation

1. Begin by filling the tank with clean water to the operation level.
2. Add mulch one bale at a time, closing the lid to allow the agitator to run until the bale is well mixed into the slurry. The safety switch will not allow operation of the agitator when the lid is open.
3. Add seed and agitate.
4. Add fertilizer and tackifier to the slurry.
5. When using granular fertilizer add it into the slurry and agitate until the slurry is a consistent mix.

2 - 2: Operators Instructions

Matching Speed to Desired Performance

For best results and longer life of your equipment, product pump speed should match the specific application. This is a learned skill that will develop with experience. For example, you can avoid unnecessary wear on your product pump and prolong engine life if you avoid prolonged use at speeds higher than needed to achieve the desired pressure and flow. Running the product pump at higher RPM and partially closing the nozzle valve will not only waste energy but shorten the life of the pump and engine. Find a speed that gives you the optimum performance for the job.

When higher volume and pressure is needed to obtain the desired range on your turret gun, increase the RPM to achieve the desired performance.



Agitation

Agitator speed is controlled with a flow control valve mounted near the product pump (see photo). To increase speed, turn the lever to the right, to decrease turn to the left. Typically the optimum speed is at about a 1 or 2 o'clock position. Run the agitator at a speed that will give you the best results in bringing the slurry to the desired consistency. Again, running the agitator at a higher speed than necessary for prolonged periods will waste energy and stress the system unnecessarily.

The agitator is controlled by a switch on the side of the fill door. When the switch is centered the agitator is turned off. Reversing the direction of the agitator paddles is as easy as flipping the switch up or down. **DO NOT RUN THE AGITATOR WITH THE DOOR OPEN.** A safety switch is installed to stop the agitator when the door is open.



The Product Pump

Before starting product pump open the main valve at the bottom of the product tank. This valve must be fully open when applying product. To run the product pump pull the valve lever toward you. Avoid running the product pump in a "dead-headed" situation for more than a minute or two. When not applying product, the by-pass valve should be opened to allow product to circulate back to tank. This again will add life to your engine and pump as well as conserving energy.



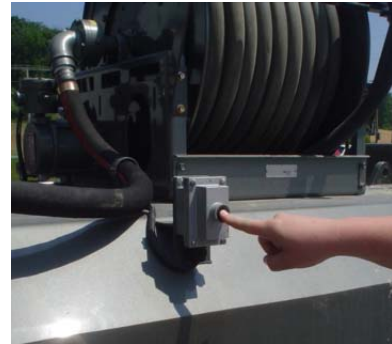
Choosing Application Method

To choose application method open the ball valve that feeds either the turret gun or the hose reel. To increase performance close the bypass valve that sends the flow back to tank. To avoid undue stress on the system the bypass valve should be opened within a few minutes of closing the application valves.



The Hose Reel

To operate the hose reel simply pull out the desired length of hose needed for the job. When finished applying press the button on the side to rewind the hose. Keep the hose and reel clean for optimum performance.



The hose reel is a 12vdc rewind system that allows the operator to adjust spring tension to create more or less drag on the reel. The reel does not have a locking feature so it is important that the nozzle be securely tucked into the bottom of the reel when transporting. Proper tension adjustment will not allow the reel to unravel during transport.



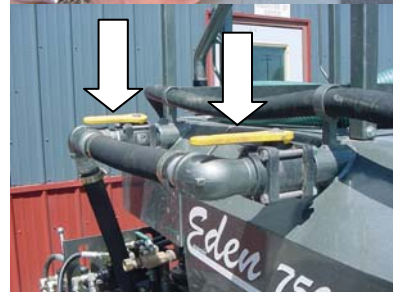
There are three lube points on the reel. Lubricate these as necessary.

A 70 amp breaker protects the hose reel motor from overload and can be reset by pressing the red button as shown.



Filling The Tank

When filling the tank with the optional fill pump opening the front ball valve will direct flow into the main product tank. Opening the valve on the back (left pictured) will fill the fresh water tank. When drawing from a pond or stream be sure the water is properly strained or product pump damage will occur.

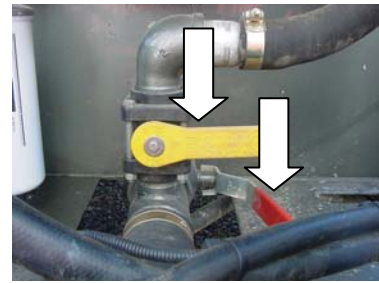


To fill from a fresh water line with a garden hose, attach garden hose to the proper port and open the valve. The fresh water tank will fill first and will overflow into the product tank if both ball valves are open.

Flushing

If your unit is equipped with the fresh water tank option, follow this procedure to flush your system: When finished applying product, close the main valve and open fresh water valve, in that order. Run the product pump and completely flush product from all lines with fresh water. Otherwise put fresh water into the product tank and flush the system with that.

Do not let slurry in the application system for prolonged periods i.e., overnight. The mulch will continue to absorb water and expand, causing the system to plug.



2 - 3: Hydraulic System Requirements

Hydraulic Fluids

Maintaining the hydraulic fluid level is very important. When you open the fill cap on the tank you should be able to see hydraulic fluid up in the strainer. If you need to add fluid for any reason, use only a high quality ISO 46 weight hydraulic fluid with anti-foam and anti-wear properties. If leaks occur in your system for any reason, stop the engine immediately. Running the system dry will cause damage to the hydraulic pump.

2 - 4: Maintenance of the Seeder

Winterization

Before beginning to winterize, be sure all areas have been washed and flushed with clean water.

Careful attention must be given to avoid freezing ANYWHERE in this unit. It is designed to allow drainage of all pumps and tanks. Give very careful attention to draining the application hose, all parts of the hose reel and the curved piping near the turret.

IMPORTANT!!!! We have discovered that ball valves when fully open will allow some liquid to be trapped behind the ball. When this freezes it can crack the valve housing. Pay careful attention to the draining of these valves in the following manner: **The ball valves should be opened to drain the system, then closed half way, a (45°) angle to drain the valve, then fully opened or fully closed so the seals are not pocked by the ball when it is in storage.**

We recommend complete draining of the unit. If you choose to use any type of anti-freeze agent, you do so at your own risk. You could jeopardize your warranty by using any such products.

NOTES
