

PIK RITE SPREADERS



INDUSTRY LEADERS IN INNOVATION AND DEPENDABILITY

BUILT TO WORK THE WAY YOU WORK

PIK RITE SPREADERS



PRODUCT GUIDE



ENGINEERED FOR THE MOST DEMANDING WORK

Each Hydra-Ram spreader is built to withstand the demands of farm life. All side and floor panels are constructed with a laminated poly covered finish for maximum strength and durability.

VERSATILITY AND AGILITY

The Hydra-Ram line covers a wide range of sizes and models to fit all capacity, terrain and application needs, from the small family farm to the largest live-stock operations.

SERIES

	Vertical Beater Models	Horizontal Beater Models	Spinner Model
250 Bu.	HR 250	490	
400 Bu.	HR 400	790	795
550 Bu.	HR 550	1190	
880 Bu.	HR 880		

Hydra-Ram Spreader Series

The most efficient hydraulic push spreaders in the industry



Hydra-Ram Technology

Two-stage innovative design combines hydraulic push cylinders with a moving platform



LESS COMPACTION

This line of tough machines uses both a sliding floor and a moving front panel to deliver the material to the beaters. The sliding floor is pushed back first, using an engineered hydraulic cylinder. When fully extended, the front panel moves back to unload the box completely.

LESS MAINTENANCE

The Hydra-Ram is engineered to get the job done with fewer moving parts. This design efficiency extends the life of the spreader while requiring less maintenance and down-time than other manufacturer's equipment. Auger systems tend to compact the material into clumps, causing uneven distribution and increased wear on the beater system.

MORE CONTROL

The Hydra-Ram 2-stage push system delivers the material to the beaters at an even and controlled speed. The push technology allows you to unload the material faster than auger or side sling machines.

Specifications

Capacity	250 Bushels
Struck Level ASAE S324.1	147 cu. ft.
Heaped ASAE S324.1	249 cu. ft.
Load carrying capacity	6.5 tons
Loading height	54.5 in.
Inside width of box	61.75
Depth of box	28.5
Overall width w/truck tires (tire size)	104.5 in. (11 R22.5)
Overall width w/flotation tires (tire size)	109.5 in. (16.5L-16.1)
Top of moving panel	66.5 in.
Top of beaters	76 in.
Overall length	23 ft.
Face of moving panel to beater centerline	13 ft. 10 in.
Number of beaters	Two
Beater speed	350 RPM
Fan diameter	29.7 in.
Number of paddles on beaters	36
Tractor PTO HP (min. recommended)	60 HP
Number of unloading speeds	Infinite from 0-16 ft./min.
PTO speed	540
PTO shaft diameter	1-3/8 in.
Number of end gate cylinders	One
Tare Weight	5,540 lbs.

A versatile heavy duty spreader for low volume requirements



All Pik Rite HR series spreaders provide a fine, wide and uniform spread pattern. This spreader can be upgraded with a side extension kit to make it a 325 bushel unit. All HR series spreaders also come with quick detach beaters and a contoured push panel for better cleanout.

Our most popular size; engineered for the most demanding jobs



Specifications

Capacity	400 Bushels
Struck Level ASAE S324.1	249 cu. ft.
Heaped ASAE S324.1	418 cu. ft.
Load carrying capacity	11.5 tons
Loading height	64 in.
Inside width of box	71 in.
Depth of box	32 in.
Overall width w/truck tires (tire size)	116.5 in. (11 R22.5)
Overall width w/flotation tires (tire size)	121.5 in. (16.5L-16.1)
Top of moving panel	76 in.
Top of beaters	89 in.
Overall length	28 ft. 6 in.
Face of moving panel to beater centerline	16 ft. 4 in.
Number of beaters	Two
Beater speed	420 rpm
Fan diameter	34.6 in.
Number of paddles on beaters	42
Tractor PTO HP (min. recommended)	100 hp
Number of unloading speeds	Infinite from 0-16 ft./min.
PTO speed	1000
PTO shaft diameter	1-3/8 in. - 1-3/4 in.
Number of end gate cylinders	Two
Tare Weight	9,675 lbs.

The Pik Rite HR series quick detachable beater system is innovative and effective! Built to spread the toughest, pen packed dairy manure, dry feed lot, and composite material with ease. This vertical beater unit comes standard with two beaters and a double constant velocity 1000 RPM PTO drive.

Designed to make the large spreading chores easy

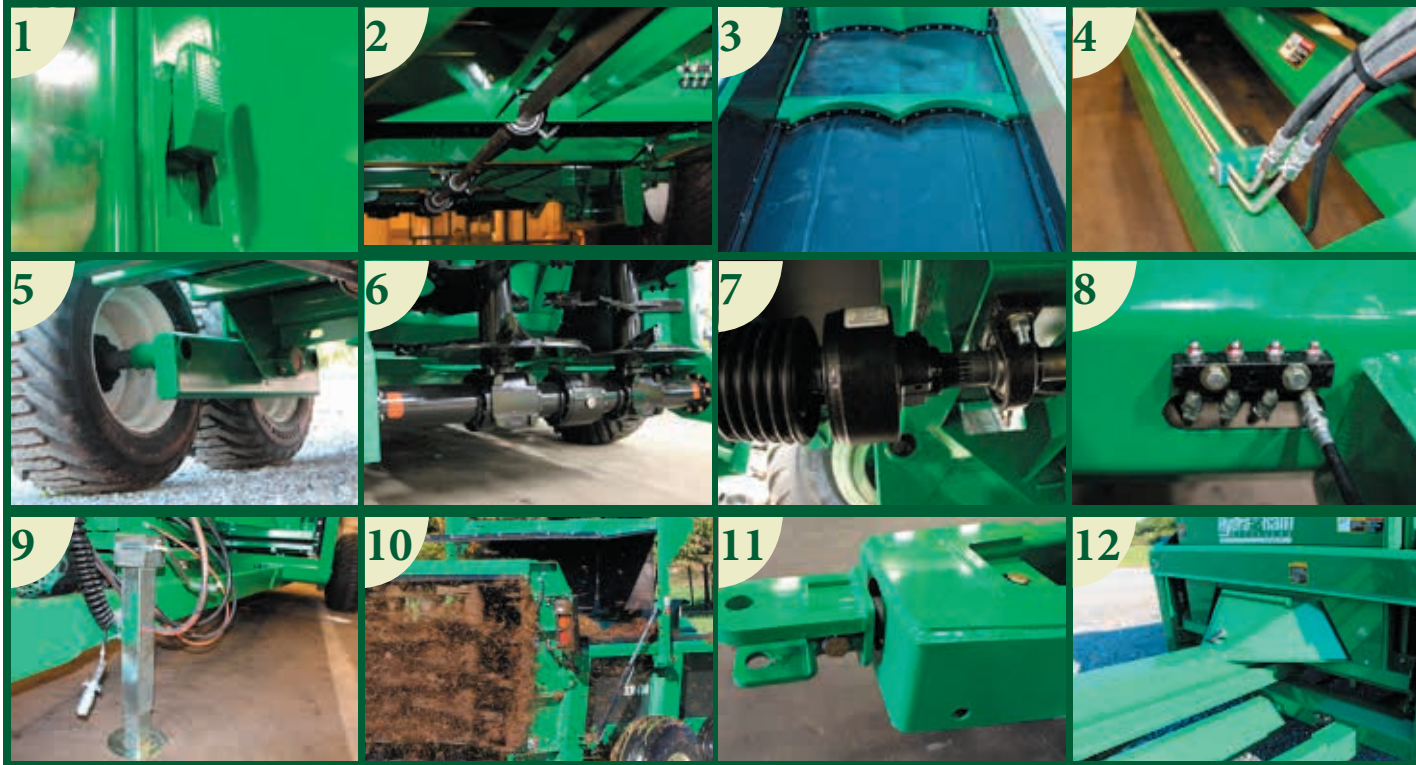
Specifications

Capacity	550 Bushels
Struck Level ASAE S324.1	435 cu. ft.
Heaped ASAE S324.1	604 cu. ft.
Load carrying capacity	16.6 tons
Loading height	87 in.
Inside width of box	71 in.
Depth of box	56.75 in.
Overall width w/truck tires (tire size)	130 in. (425/65R22.5)
Overall width w/flotation tires (tire size)	135 in. (550/60-22.5)
Top of moving panel	97.5 in.
Top of beaters	112 in.
Overall length	28 ft. 6 in.
Face of moving panel to beater centerline	16 ft. 4 in.
Number of beaters	Two
Beater speed	420 rpm
Fan diameter	34.6 in.
Number of paddles on beaters	64
Tractor PTO HP (min. recommended)	150 hp
Number of unloading speeds	Infinite from 0-16 ft. per min.
PTO speed	1000
PTO shaft diameter	1-3/8 in./ (1-3/4 in.)
Number of end gate cylinders	Two
Tare Weight (w/425 tires)	12,420 lbs.



The tough and efficient HR 550 was built for larger operations. With a 550 bushel capacity this spreader can make quick work of the larger spreading chores or simply remove the quick detachable beaters to use this versatile machine for stock piling!

Why farmers are choosing Pik Rite spreaders:



Features

1. QUICK DETACH BEATERS
2. DIRECT SHAFT DRIVE
3. POLYLAMINATE FLOOR & SIDES
4. STAINLESS STEEL TUBING
5. HEAVY DUTY WALKING BEAMS
6. HEAVY DUTY GEAR BOXES
7. CLUTCH PROTECTED DRIVE LINES
8. EASY ACCESS GREASE FITTING BANKS
9. HEAVY DUTY JACK STANDS
10. ENDGATE RUBBER SAFETY SHIELD
11. WEIGH SCALE INSTALLATION READY
12. QUICK ACCESS PANEL FOR SERVICE



Horizontal Beater Models

The 490, 790 and 795 model spreaders have similar capacity and specifications as the vertical beater HR 250 and HR 400. Contact your sales representative for more information.

Features

- SINGLE OR DOUBLE BEATERS

For distributing materials that are more prone to clumping, an optional upper beater can be added for a more uniform spread.

- SLURRY PAN

Our quick-opening slurry pan can be added to help spread chicken litter. This unit forces the beater to completely empty the load. The slurry pan will also help to keep material off the road.

PROUDLY
MADE IN THE USA



795 Spinner Model



The Hydra-Ram Technology in a Spinner Model



The Pik Rite HR series spinner spreader is innovative and effective! This spinner spreader delivers an even and consistent spread pattern in lighter, dry materials and with occasional pen pack usage.

Features

- **SPINNERS**

Heavy duty spinners provide unmatched widespread performance.

- **REMOVABLE BEATER ASSEMBLY**

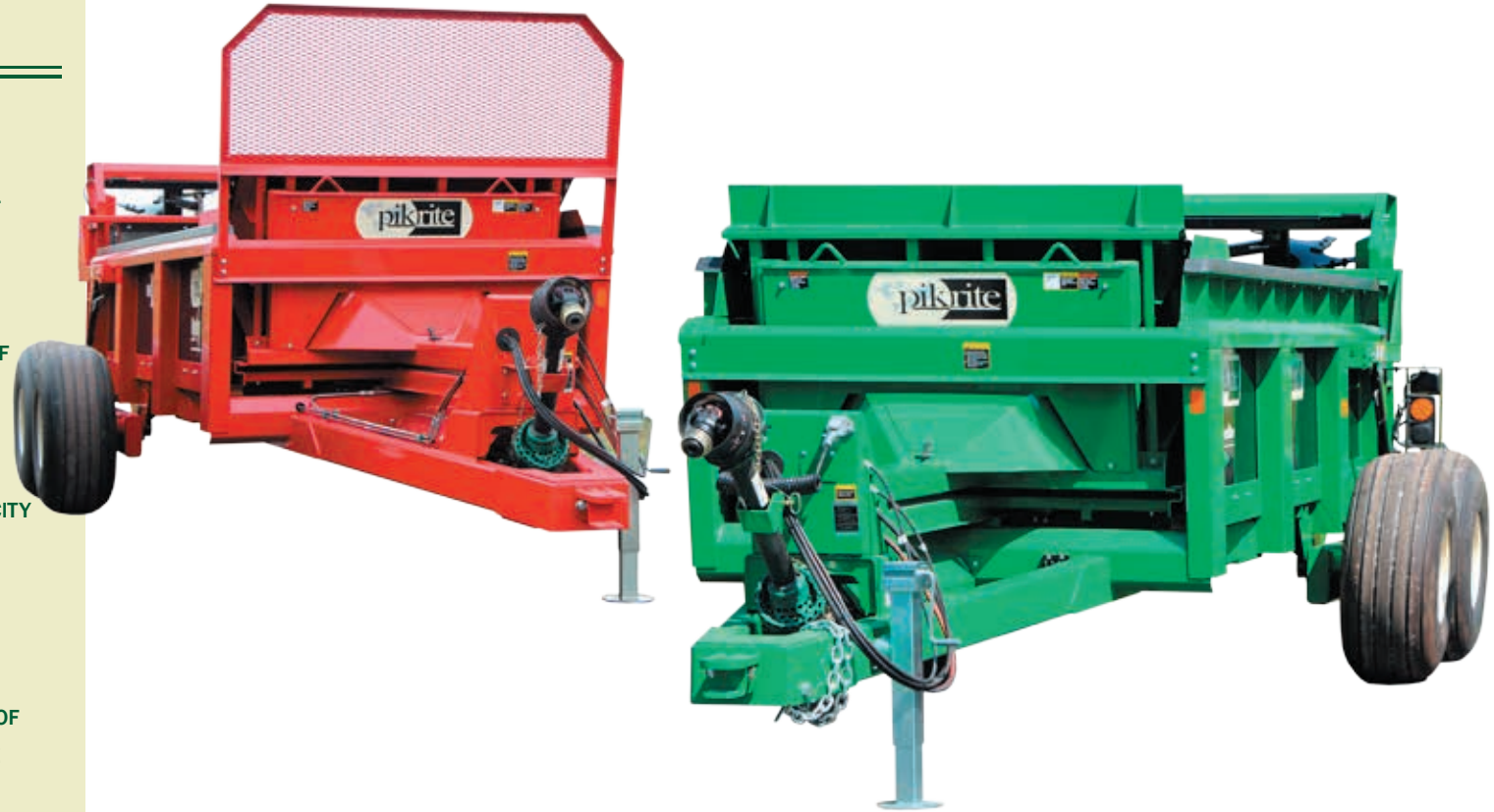
Spinner assembly can easily be removed to use spreaders for stockpiling.



BUILT TO WORK
THE WAY YOU WORK

Custom Options

- COLOR OPTIONS**
 ALL PIK RITE SPREADERS COME IN TRADITIONAL GREEN, INDUSTRIAL YELLOW, RED OR BLUE
- FORWARD ROCK GUARD**
 HEAVY DUTY ROCK GUARD MOUNTS TO FRONT OF SPREADER
- SIDE EXTENSION KIT**
 AVAILABLE ON ALL MODELS TO INCREASE CAPACITY
- ROAD SAFETY AND FIELD WORK LIGHTS**
- FLOW CONTROLS**
 HYDRAULIC FLOW CONTROL ADJUSTS THE RATE OF DISTRIBUTION & IS CAB OR TONGUE MOUNTABLE
- TIRE CONFIGURATIONS**



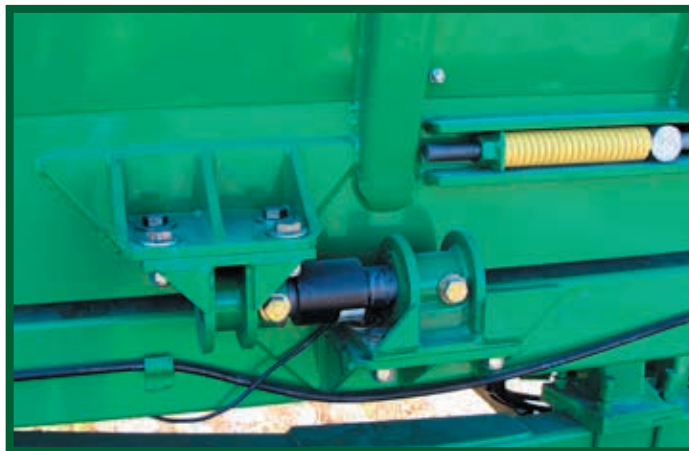
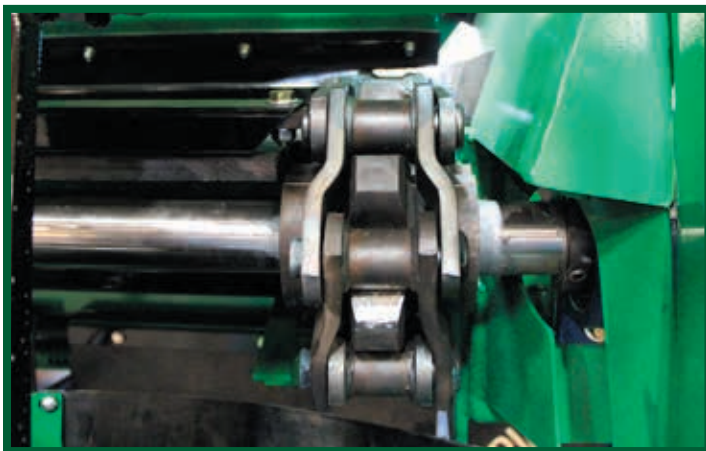
	Recapped Truck	Used Truck	Implement Flotation	Flotation
250 Bushel	11 R22.5	385/65 R22.5 425/65 R22.5	16.5 x 16.1	
400 Bushel	11 R22.5	385/65 R22.5 425/65 R22.5	16.5 x 16.1	500/50-22.5
550 Bushel		425/65 R22.5		550/60-22.5



500/50-22.5 425/65 R22.5 16.5 x 16.1 11 R22.5 Truck

Hydra-Pull Spreader Series

The strongest web chains in the industry. These spreaders have the durability and capacity to meet the demands of larger farm operators and custom haulers.



- **HEAVY DUTY PINTLE CHAIN**
Chain delivery system includes 1" thick, hardened, solid steel rivet pins and 1/2" thick steel side plates to handle large loads with ease. Chain strength is rated for 110,000 lbs.

- **SPRING TENSION ROLLERS**
The spring loaded front idler rollers keep the chain secure and provide better chain tracking.


- **2 - PIECE DRIVE SPROCKET**
The pintle chain sprocket allows for service removal without completely disassembling the drive system.

- **WEIGH SCALE INSTALLATION READY**
All Hydra-Pull models are designed for Digistar load cells in the spreader tongue and under spreader body.

- **AIR OR HYDRAULIC BRAKES**

- **TAPERED SIDES**

All Hydra-Pull models are designed with tapered sides and set in wheels for lower loading height.



HP	700
HP	880
SERIES	
HP	1100

Specifications

Capacity	700 Bushels
Struck Level ASAE S324.1	463 cu. ft.
Heaped ASAE S324.1	709 cu. ft.
Load carrying capacity	19.2 tons
Inside width of box	91 in. to 60 in.
Depth of box	44.5 in.
Overall width w/flotation tires (tire size)	132 in 700/40-22.5
Overall height	128 in.
Overall length	32 ft. 3 in.
Bed length	24 ft.
Load height	90 in.
Number of beaters	2
Beater speed	420 RPM
Fan diameter	34.6 in.
Number of paddles on beaters	70 total
Tractor PTO HP (min. recommended)	185 HP
Number of unloading speeds	Infinite from 0-15.21 ft./min.
PTO speed	1000
PTO shaft diameter	1 3/4 in.
Number of end gate cylinders	2
Tare weight	16,000 lbs.

Versatile, heavy duty spreaders for high volume requirements.



The Pik Rite HP series quick detachable beater system is innovative and effective! Built to spread the toughest, pen packed dairy manure, dry feed lot, and composite material with ease. This vertical beater unit comes standard with two beaters and a double constant velocity 1000 RPM PTO drive.

Our most popular size; engineered for the most demanding jobs!



Specifications

Capacity	880 Bushels
Struck Level ASAE S324.1	712 cu. ft.
Heaped ASAE S324.1	1096 cu. ft.
Load carrying capacity	24.2 tons
Inside width of box	60 in. to 96 in.
Depth of box	53.2 in.
Overall width w/flotation tires (tire size)	132 in. 700/40-22.5
Overall height	129 in.
Overall length	31 ft. 6 in.
Bed length	24 ft.
Load height	100.5 in.
Number of beaters	2
Beater speed	420 RPM
Fan diameter	34.6 in.
Number of paddles on beaters	70 total
Tractor PTO HP (min. recommended)	200 HP
Number of unloading speeds	Infinite from 0-15.21 ft./min.
PTO speed	1000
PTO shaft diameter	1 3/4 in.
Number of end gate cylinders	2
Tare weight	17,040 lbs.

All Pik Rite HP series spreaders provide a fine, wide and uniform spread pattern. This spreader can be upgraded with a side extension kit for special purpose application. All HP series spreaders also come with quick detach beaters and a heavy duty web chain for excellent cleanout.

1100 Bushel Vertical Beater Spreader

Features

- 30 TON CAPACITY
- GEA TRI-AXLE CHASSIS
- FRONT LIFT AXLE
- FRONT & REAR STEERING AXLES
- 10,000 LB SIDE WIND JACK



Built on a GEA chassis, this 1,100 bushel spreader is ready to work! Designed for the large beef feedlots, large dairy operations, and custom haulers, the HP 1100 has the capacity that you need!

Built to work the way you work!



Specifications

Capacity	1100 Bushels
Struck Level ASAE S324.1	890 cu. ft.
Heaped ASAE S324.1	1370 cu. ft.
Load carrying capacity	30 tons
Inside width of box	60 in. to 96 in.
Depth of box	53 in.
Overall width w/flotation tires (tire size)	137in.-28LR26
Overall height	137 in.
Overall length	38 ft. 4 in.
Bed length	30 ft.
Load height	113 in.
Number of beaters	2
Beater speed	420 RPM
Fan diameter	34.6 in.
Number of paddles on beaters	70 total
Tractor PTO HP (min. recommended)	250 HP
Number of unloading speeds	Infinite from 0-15.21 ft./min.
PTO speed	1000
PTO shaft diameter	1 3/4 in.
Number of end gate cylinders	2
Tare weight	26,500 lbs.

The quick detachable beater system makes this a truly versatile machine. From spreading manure to grain and silage hauling, the HP 1100 is designed to maximize return on investment!

Parts Availability

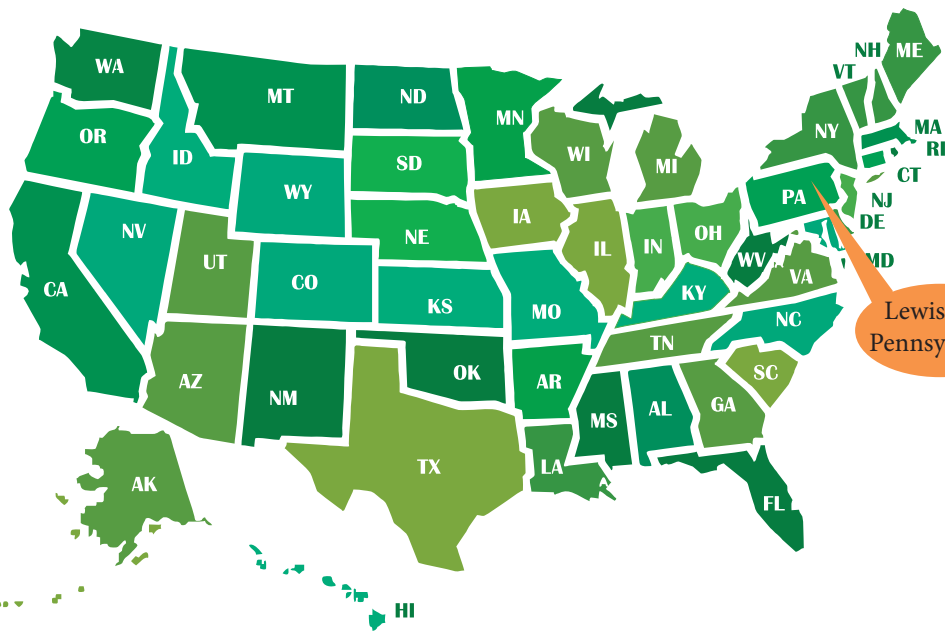
The entire line of Pik Rite equipment comes with our total commitment to customer support after the sale. Our customer service department is staffed to respond quickly to requests for parts, service or information. Our production staff can manufacture most parts in our shop and deliver them through a variety of carriers including UPS, Fed Ex and other LTL (less than a truckload) services.



2 Year Warranty

Pik Rite, Inc. provides a limited warranty assuring the Pik Rite spreader to be free from defects in material and workmanship for a period of two years from the original date of purchase. Pik Rite will repair or replace, at its option and without charge, any defective or malfunctioning part (excluding items of normal wear or misuse) of the spreader for this allotted time. Pik Rite, Inc. makes no warranty of merchantability or fitness for a particular use.





Our Vision & Mission

To be the premier producer of agricultural equipment and truck bodies that is recognized across the globe for its superior design, durability and workmanship.

Everyone at Pik Rite is given the opportunity to grow personally while engaging in an atmosphere of unity, respect and integrity. Our team work attitude creates a positive experience for our customers through favorable relationship, advanced innovation and easy to use, first class products.



Success Stories



“My Pik Rite spreader is built for a farmer’s use! I love the strength and durability of the Hydra-Pull 1880VB. We stockpile poultry litter in a field and I never have to worry about picking up frozen or chunky material. The spreader shreds the chunky material and applies the material in a uniform application. It also saves time by spreading large quantities quickly and easily. I own two of these machines and heartily recommend them!”

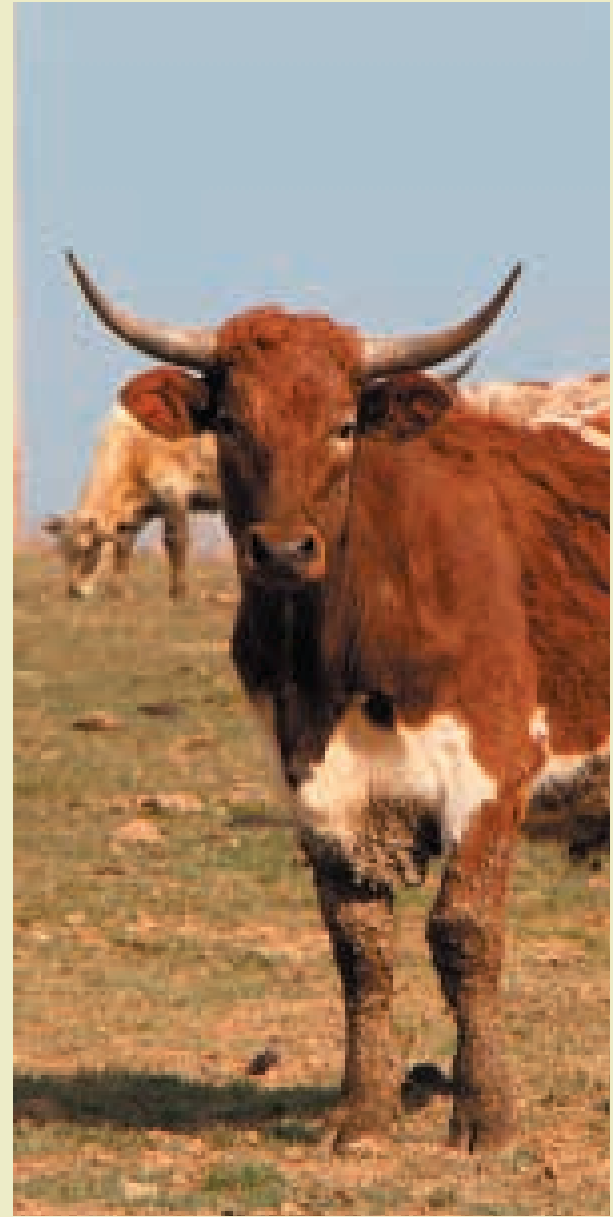
Daryl Alger
Lebanon, Pennsylvania

“We have been very impressed with our Hydra-Pull 1880VB spreader from Pik Rite! We spread a heavy duty lime bio solids material so initially I was very skeptical until we spread our first load! The spreader was able to break up the chunky material and gave us a perfect spread pattern. It also saves us time by spreading efficiently at speeds up to 6 miles per hour. We have actually been able to spread up to 200 tons per hour with this durable machine. Thank you Pik Rite for a spreader that’s built to work the way we work!”

Scott Rhoads
Stoystown, Pennsylvania

“I really like the design changes on the new Hydra-Ram HR 400. The quick detach beaters are very handy, and I see improved cleanout with the contoured push panel. We spread corn fodder bedding (pen pack) and the HR 400 shreds it and spreads it so evenly on the field that we can follow it with a no-till planter! The weigh scale mountable tongue is also a great feature and my scale really takes the guess work out of the application rate. I also like the hydraulic over electric control configuration. Pik Rite does a great job building manure handling equipment with many user friendly features!”

Dan Mussleman
Bethel, Pennsylvania



Pik Rite, Inc.

60 Pik Rite Lane

Lewisburg, PA 17837

1-800-326-9763

Visit our website at www.pikrite.com



PROUDLY MADE IN THE USA

Pik Rite, Inc. reserves the right to change any equipment specifications, design or materials without notice.

