



————— vegetable harvesting equipment
————— vegetable harvesting equipment

February 13, 1998

Dear Customer,

Congratulations on your purchase of a quality designed and manufactured Pik Rite product!

You should expect a return on your investment in the form of outstanding performance in the field, affordable parts and minimum maintenance.

Should your equipment need parts or service, we have a team that is fully equipped and committed to meet your needs.

In order to maintain maximum performance, it is extremely important that all the information in the manual be reviewed and studied carefully before operation.

Thank you for your confidence in Pik Rite!

Sincerely,

A handwritten signature in black ink, appearing to read "Elvin Stoltzfus", written over a horizontal line.

Elvin Stoltzfus, President

Company History

Pik Rite, Inc, is a designer and manufacturer of innovative, quality-built vegetable harvesting equipment. Located 2 miles west of Lewisburg in Union County, Pennsylvania, Pik Rite operates from manufacturing facilities which encompass 28,000 square feet in addition to office space utilizing an additional 2700 square foot area. The company is owned by its' two founders who have diverse backgrounds in farming and welding shop activities. For the first ten years of Pik Rite's existence, Joseph Yoder served as President and Elvin Stoltzfus as Vice-President. Upon Mr. Yoder's move to California in mid-1997, the two owners exchanged administrative positions in order to afford Mr. Yoder more time in his area of expertise, product improvement, and take advantage of Mr. Stoltzfus' managerial capabilities. Pik Rite presently employs 30-35 people.

In 1983, the first vegetable harvesting machine was built for the purpose of providing a mechanical method of picking tomatoes for the local processing industry. After three years of testing and modifying the original machine, three Pik Rite harvesters were built in 1986. Two more machines were subsequently manufactured in 1987 and again in 1988. Activities in 1989 were limited to research and further development of the tomato harvester, with concentration in several areas, including a new forced balance shaker system. As a result of these efforts, Pik Rite now holds a domestic patent for a Double Brush Shaker System.

During the 1990's, Pik Rite has experienced steady growth in product sales, market coverage, and technological innovations. The pull-type design of the tomato harvester has allowed the growers who purchase the machines a great degree of adaptability for harvesting in different growing environments. Pik Rite has subsequently developed and added new product lines for harvesters which can be used to pick cucumbers and peppers. A vine windrower was developed in 1994 to assist the growers in preparing for the harvest by rearranging vines prior to picking to allow for more efficient harvesting. In the fall of 1997, Pik Rite introduced a new product to the marketplace - a plastic wrapper. This piece of equipment will allow fast, efficient removal of plastic mulch from the fields after harvest, and will result in disposal cost savings for the grower.

Markets

Pik Rite, Inc. has basically captured and dominated the new tomato harvester sales market in the Midwest and Eastern sections of North America, including Ontario, Canada. Machines are also presently being used for crop harvesting in Kentucky, Texas, New Mexico, California, Colorado, and Washington. In addition to the Canadian market, Pik Rite harvesters have also been exported to Russia, Australia, and Mexico. New opportunities are now being considered for sales to several South American countries and Saudi Arabia. In 1993, Pik Rite entered into a licensing agreement with the Italian firm, Gallignani Ortofrutta, to build tomato harvesters using the double brush shaker system. Gallignani's sales territory includes most of the countries in the Mediterranean Basin.

As the United States manufacturing sector looks forward to the beginning of the 21st century, Pik Rite continues to lead the way with production of efficient, dependable, vegetable harvesting equipment which provides the grower with the best value for the dollar. These efforts have been recognized by the Commonwealth of Pennsylvania as Pik Rite, Inc. was presented with the state's Agribusiness Achievement Award in January 1997.

Introduction



This safety alert symbol identifies important safety messages in this manual. When you see this symbol, be alert to the possibility of personal injury & carefully read the message that follows.

“Right-hand” & “left-hand” sides are determined by facing in the direction the machinery will travel.

Record your product’s serial number in the space provided below:

S.N. _____ Purchase Date _____

Please review the warranty for this equipment which appears on the sales order that was signed when the sales order was placed. This warranty provides you the assurance that Pik Rite will back its products where defects appear within the warranty period. Pik Rite also provides field improvements, in some circumstances without charge to the customer, even if the product’s warranty is expired.

Warranty & field improvements are a part of Pik Rite’s product support program for customers who operate & maintain their equipment as described in this manual. If the equipment is abused or modified causing a change in its performance beyond the original factory specifications, the warranty will become void & field improvements may be denied.

For information and service call or write to:

Pik Rite Inc.
101 Fairfield Rd.
Lewisburg PA 17837
800-326-9763

Tables of Contents

SECTION 1: SAFETY	8
SECTION 2: PREPARATION, OPERATION & MAINTENANCE	20
2-1: Preparing the Tractor & Mounting the Windrower	22
2-2: Operator's Instructions	22
2-3: Hydraulic System Requirements	22
2-4: Maintenance of the Windrower	23
SECTION 3: PARTS	26
20098-1-1: Tractor Mount Assembly	28
20098-2-1: Lift & Tilt Assembly	30
20098-3-1: Gathering Bracket Mount Assembly	32
20098-3-2: Gathering Chain Assembly	34
20098-3-3: Gathering Chain Drive Assembly	36
20098-4-1: Hydraulics	38
20098-5-1: Electrical	40
20098-5-2: Valve Wiring Detail	42



SECTION 1:

SAFETY



SECTION 1: SAFETY

The operator's safety was one of the prime considerations in the minds of Pik Rite engineers when designing Pik Rite equipment. Shielding, simple adjustments & other safety features were built into the equipment wherever possible. Modifications to the equipment may impair the function &/or safety & affect machine life.



Recognize Safety Information

This is the safety-alert symbol. When you see this symbol on your equipment or in this manual, be aware of the potential for personal injury.

Follow recommended precautions & safe operating practices.

SAFE0103/ASAE SAFETY-ALERT SYMBOL



Understand Signal Words

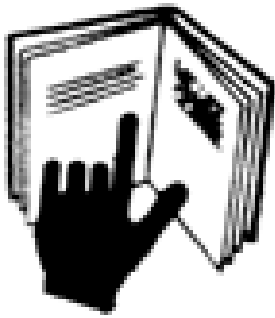


A signal word—DANGER, WARNING or CAUTION—is used with the safety-alert symbol.

DANGER identifies the most serious hazards.

DANGER or WARNING safety signs are located near specific hazards. General precautions are listed on CAUTION safety signs.

SAFE0001/DANGER, SAFE0002/WARNING, SAFE0003/CAUTION



Follow Safety Instructions

Carefully read all safety messages in this manual & on your equipment's safety signs. Keep safety signs in good condition. Replace missing or damaged safety signs. Be sure that all new equipment components & repair parts include the current safety signs. Replacement safety signs are available from Pik Rite.

Learn how to operate the equipment & how to use controls properly. Do not allow anyone to operate without instruction.

Keep your equipment in proper working condition. Unauthorized modifications to the equipment may impair function &/or safety and affect equipment life.

If you do not understand any part of this manual & need assistance, please contact your Pik Rite representative.

SAFE0104/READ OPERATOR'S MANUAL

SECTION 1: SAFETY



Operate Equipment Safely

All equipment must be operated by responsible persons who have been properly instructed & delegated to do so.

The equipment may move suddenly or fall while detaching. Use blocks under the wheels & release all stored energy from pickup float system before detaching equipment.

To avoid injury or death:

Disengage drives, shut off engine, & make sure electrical power is off before servicing or unplugging the equipment.

Do not stand between equipment & tractor when detaching equipment.

This equipment is intended for mobile field operation only. Never use equipment in a stationary position or modify it to be used in one.

Tomato Harvester & Cucumber Harvester

Do not stand or work under discharge conveyor or header while harvester is operating.

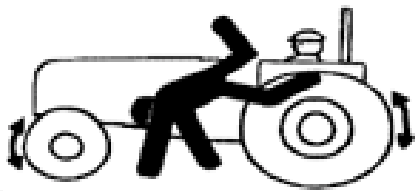
Do not stand between harvester & tongue while positioning tongue.

Do not put hands or feet between tongue & frame opening while positioning tongue.

Always operate machine at rated PTO speed.

Do not use your hands or feet to feed plants into the harvester. Disks & chains can feed plants faster than you can release your grip on the plants.

SAFE0087/8.1 LARGE THROWN OR FLYING OBJECT



Keep Riders Off Equipment & Tractor

Only allow the operator on the tractor & laborers in the places designed for them. Keep riders off.

Workstations are built into the Pik Rite tomato & cucumber harvesters to ensure that laborers can safely stand while doing grading. Riders on equipment are subject to injury such as being struck by foreign objects & being thrown off of the equipment. Riders also obstruct the operator's view resulting in the equipment being operated in an unsafe manner.

SAFE0105



Prepare for Emergencies

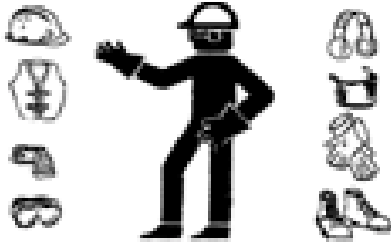
Be prepared if a fire starts.

Keep a first aid kit & fire extinguisher handy.

Keep emergency numbers for the ambulance service, hospital, fire department, & doctors near your telephone.

SAFE0106

SECTION 1: SAFETY



Wear Protective Clothing

Wear close fitting clothing & safety equipment appropriate to the job.

Operating equipment safely requires the full attention of the operator. Do not wear radio or music headphones while operating equipment.

SAFE0107



Protect Against Noise

Prolonged exposure to loud noise can cause impairment or loss of hearing.

Wear a suitable hearing protective device such as earmuffs or earplugs to protect against objectionable or uncomfortable loud noises.

SAFE0095/9.1 LOUD NOISE--HEARING PROTECTION REQUIRED



Handle Chemical Products Safely

Direct exposure to hazardous chemicals can cause serious injury. Potentially hazardous chemicals used in conjunction with Pik Rite equipment include such items as lubricants & paints.

A Material Safety Data Sheet (MSDS) provides specific details on chemical products: physical & health hazards, safety procedures, & emergency response techniques.

Check the MSDS before you start any job using a hazardous chemical. That way you will know exactly what the risks are & how to do the job safely. Then follow the advised procedures & make use of the recommended equipment.

(Contact the Pik Rite Lewisburg, PA office for MSDS's on chemical products used with Pik Rite equipment.)

SAFE0108



Stay Clear of Rotating Drive lines

Entanglement in rotating driveline can cause serious injury or death.

Keep the tractor master shield & drive line shields in place at all times. Make certain that rotating shields turn freely.

Wear close fitting clothing. Stop the engine & be sure the PTO driveline is stopped before making adjustments, connections, or cleaning out the PTO driven equipment.

SAFE0070/7.9 WHOLE BODY ENTANGLEMENT--IMPLEMENT INPUT DRIVELINE

SECTION 1: SAFETY



Use Safety Lights & Devices

Slow moving tractors & towed implements carry the potential to create a hazard when driven on public roads. They are difficult to see, especially at night. Avoid personal injury or death resulting from collision with a vehicle.

Flashing warning lights & turn signals are recommended whenever driving on public roads. To increase visibility, use the lights provided with your equipment.

SAFE0109



Practice Safe Maintenance

Understand service procedure before doing work. Maintain cleanliness & dryness in work area.

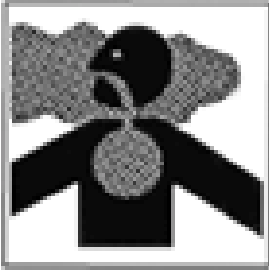
Never lubricate or service equipment while it is in motion. Be sure to keep hands, feet, & clothing away from power-driven parts. Disengage all power & manipulate controls to relieve pressure. Lower equipment to the ground. Stop the engine. Remove the key. Allow equipment to cool.

Securely support any equipment elements that must be raised for service work.

Keep all parts in good condition & properly installed. Fix damage immediately. Replace worn or broken parts. Remove any buildup of grease, oil, or debris.

Disconnect battery ground cable (-) before making adjustments on electrical systems or welding on equipment.

SAFE0019/3.6 FALLING OR SLIPPING ON WET AREA



Remove Paint Before Welding or Heating

Avoid potentially toxic fumes & dust.

Hazardous fumes can be generated when paint is heated by welding, soldering or using a torch.

Do all work outside or in a well-ventilated area. Dispose of paint & solvent properly.

Remove paint before welding or heating:

- If you sand or grind paint, avoid breathing the dust. Wear an approved respirator.

If you use solvent or paint stripper, remove stripper with soap & water before welding. Remove solvent or paint stripper containers & other flammable material from the area. Allow fumes to disperse at least 15 minutes before welding or heating.

SAFE0005/1.2 POISONOUS FUMES OR TOXIC GASES--ASPHYXIATION



Avoid Heating Near Pressurized Fluid Lines

Flammable spray can be generated by heating near pressurized fluid lines, resulting in severe burns to you & bystanders. Do not heat by welding, soldering, or using a torch near pressurized fluid lines or other flammable materials. Pressurized lines can be accidentally cut when heat goes beyond the immediate flame area.

SAFE0112



Avoid High-Pressure Fluids

Fluid escaping under pressure carries the potential to penetrate the skin resulting in serious injury.

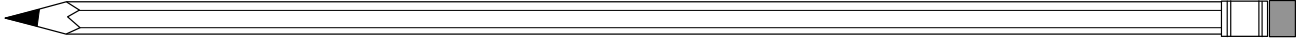
Avoid this hazard by relieving pressure before disconnecting hydraulic or other lines. Tighten all connections before applying pressure.

Search for leaks with a piece of cardboard. Protect hands & body from high-pressure fluids.

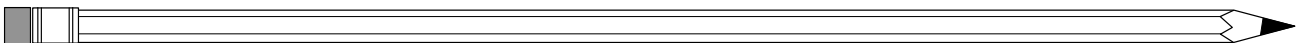
If an accident occurs, see a doctor immediately. Any fluid injected into the skin must be surgically removed within a few hours or gangrene may result. Doctors unfamiliar with this type of injury should reference a knowledgeable medical source.

SAFE0022/4.1 HIGH PRESSURE FLUID--INJECTION INTO BODY

NOTES



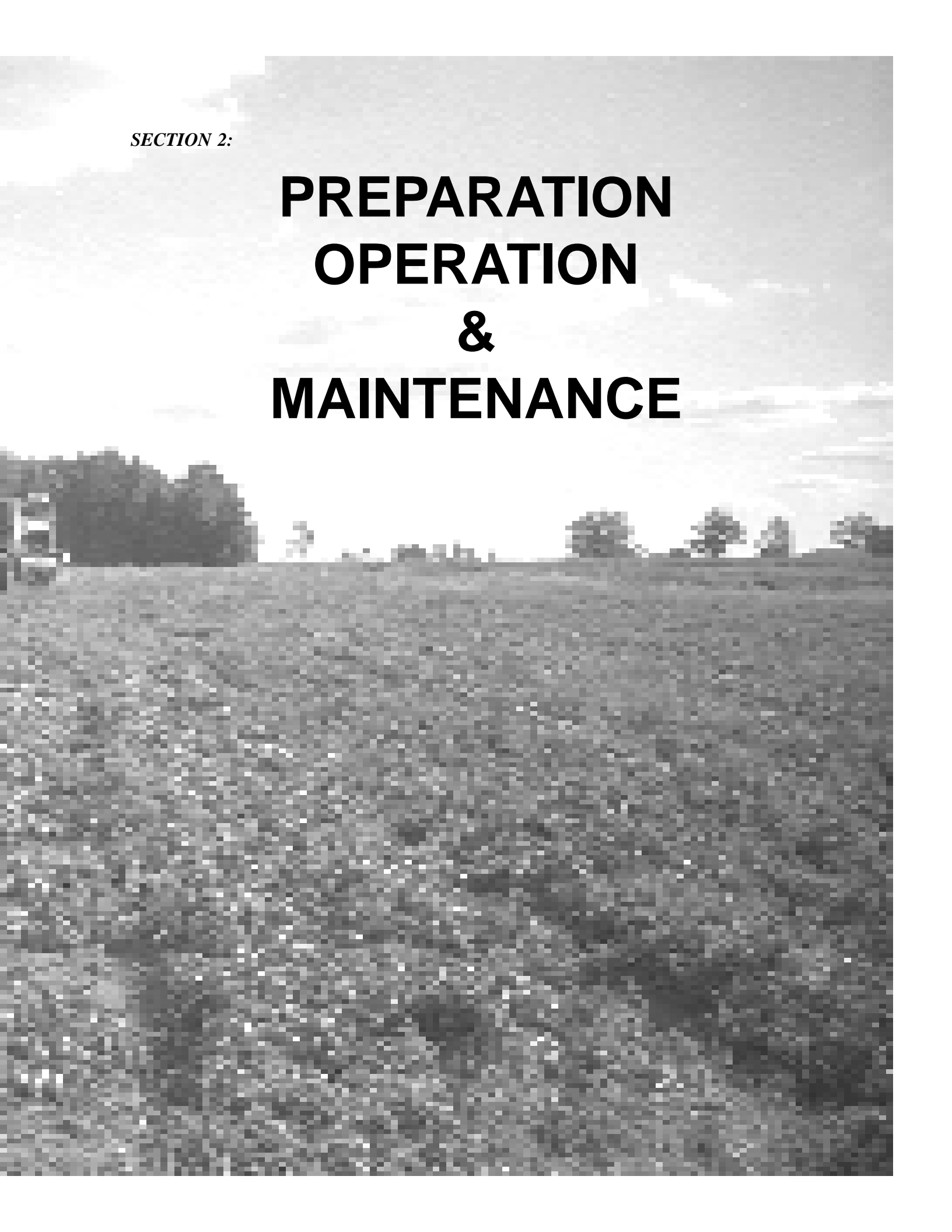
A large, empty rectangular box with a thin black border, intended for writing notes.





SECTION 2:

PREPARATION OPERATION & MAINTENANCE



2-1: PREPARING THE TRACTOR & MOUNTING THE WINDROWER

Remove the tractor's front weight bracket and install the front windrower support bracket. Install both the right and the left windrower brackets near the rear of the engine on the tractor frame. Install both the right and the left side support tubes. Insert the right and left retaining pins into the rear mounting brackets. Be sure the support tubes do not exceed 18" measuring from the front support bracket to the height mounting plate.

Bolt the cylinder bracket to the height mounting plates. The mounting height is largely determined by the tractor height with the tractor and windrower level. The gathering belts should be angled down. The front of the gathering chains should be 1" lower than the rear. Hook the hydraulic line to the tractor (See Hydraulic System Requirements). For the start up or until the operator is familiar with the function of the hydraulic system, block the toolbar up so the gathering chains are not touching the ground. This will prevent damage to the belts because the belts need to run in order to operate the lift cylinder.

2-2: OPERATOR'S INSTRUCTIONS

The gathering chains should skim the ground pushing the viny crop into a windrow. The gathering chains should match the ground speed thus eliminating fruit shatter. The windrow width can be adjusted by sliding the individual units on the toolbar.

The approaching angle of the gathering chains can be adjusted by the bolt holes in the gathering chain brackets at the mounting point or by exchanging the gathering chain tightener brackets, right or left or vice versa.

The height and angle are controlled by the electrohydraulic valve and the control box. The angle adjustment prevents one side from going deeper into the ground or gouging thus leveling the windrower.

2-3: HYDRAULIC SYSTEM REQUIREMENTS

The windrower uses the tractor's hydraulic power to operate. Insert the hoses into the tractor outlet and follow the tractor's owner's manual for instruction on running the orbital motor. **IMPORTANT! Follow the tractor's instructions on overheating of the tractor's hydraulic system.** Adjust the tractor's hydraulic flow valve to pump 10 to 15 gallons per minute. This regulates the speed of the gathering chain belts. The belt's rotation should match the ground speed for best results of minimal fruit shattering.

Adjust the flow control on the windrower for the valve speed. The flow to the valve determines the speed of the hydraulic cylinders travel. If this is adjusted to fast, it will divert all of the oil flow to the cylinders. When they are actuated, this causes the gathering chains to

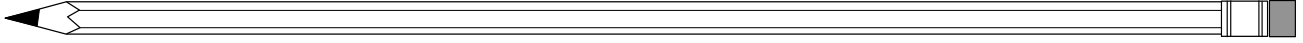
SECTION 2: OPERATION, PREPARATION & MAINTENANCE

momentarily stop operation. To avoid this momentary stopping, adjust the flow to the valve as low as possible and maintain enough speed to the hydraulic cylinders.

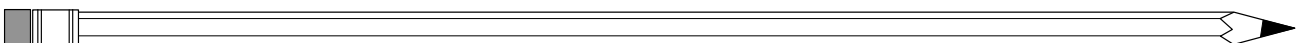
2-4: MAINTENANCE OF THE WINDROWER

- Grease and tilt (angle) adjustment linkage periodically (approximately every 50 hours of use). There are 3 grease fittings.
- Gathering chains should maintain a taut and snug tension. Overtightening will result in premature sprocket wear.
- Maintain the rollers as needed. Replace them when bound up or when the flanges wear off. Keep rollers running freely by removing any vines or dirt from behind the rollers. This avoids wearing flat spots on the rollers.
- In general, the belts need to run freely and smooth.
- The electrical box may be outdoors as it is water resistant but not water proof. Keep it in an upright position. To winterize, remove the box and store in a dry place.
- Always clean the hydraulic connections on both the tractor and the hose ends. Dirt ingested into the hydraulic system **will** cause sticking and malfunctioning of the valve.

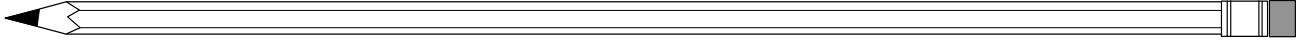
NOTES



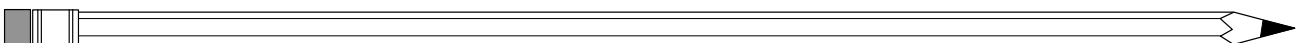
A large, empty rectangular box with a thin black border, intended for writing notes.



NOTES



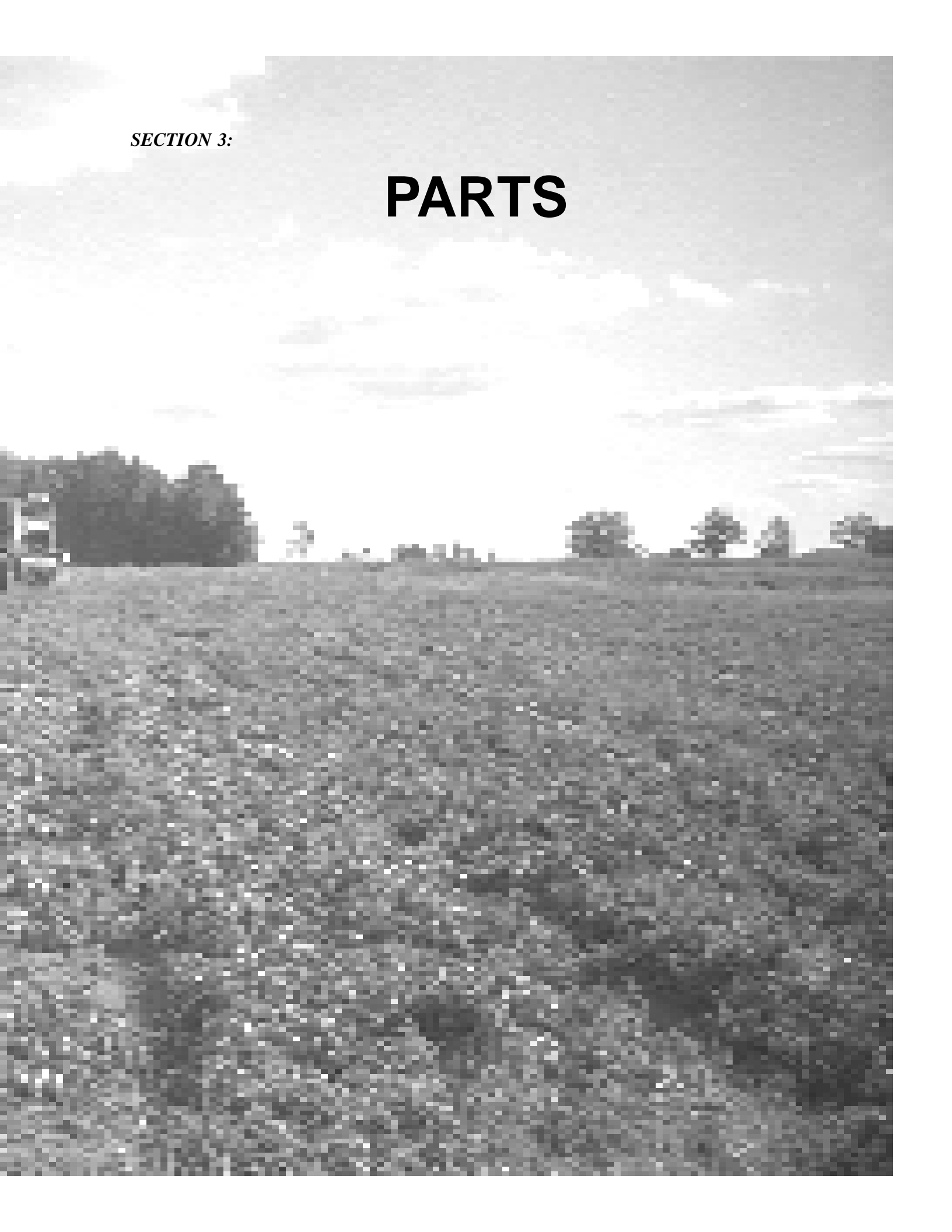
A large, empty rectangular box with a thin black border, intended for writing notes.



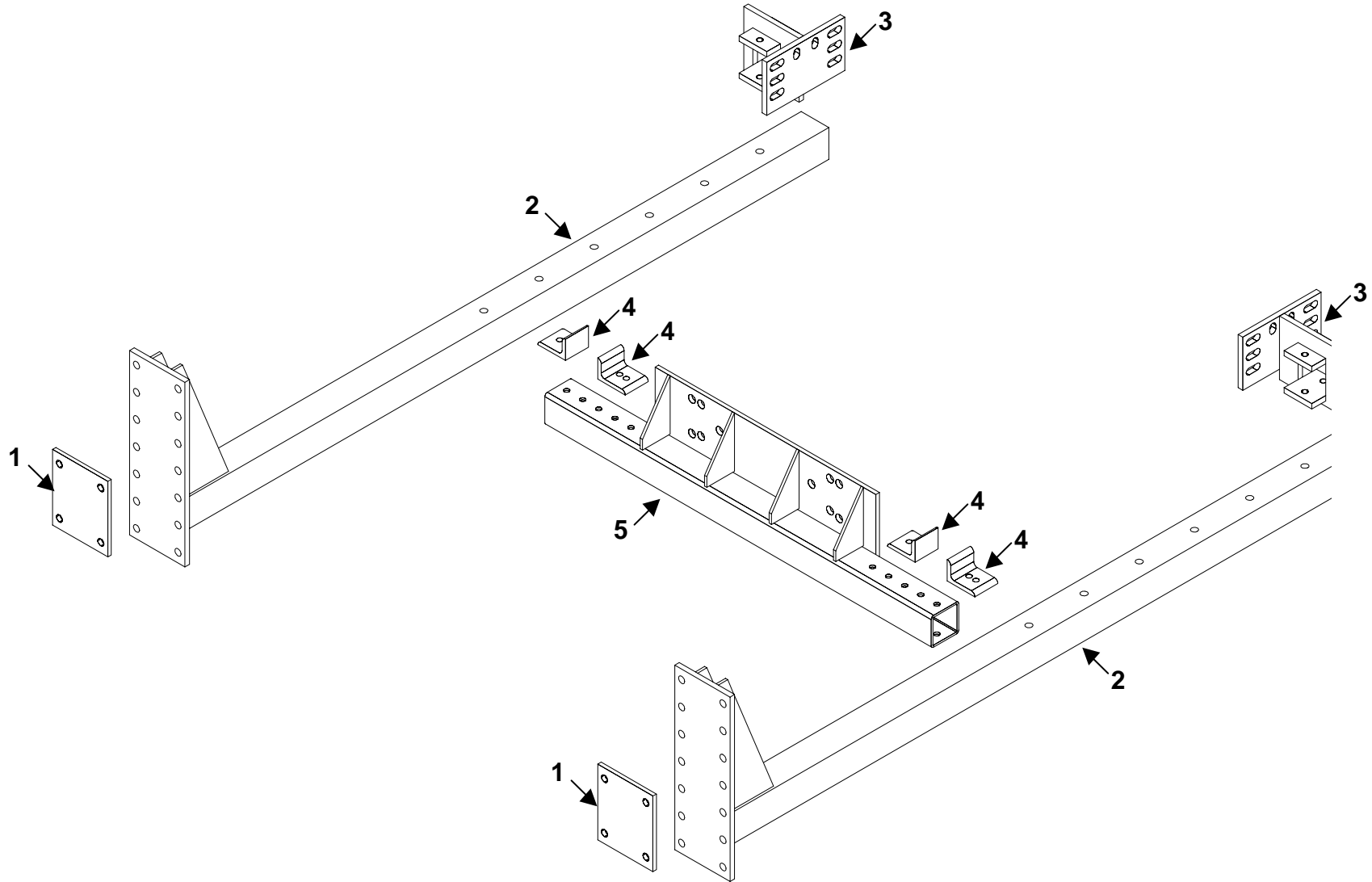


SECTION 3:

PARTS



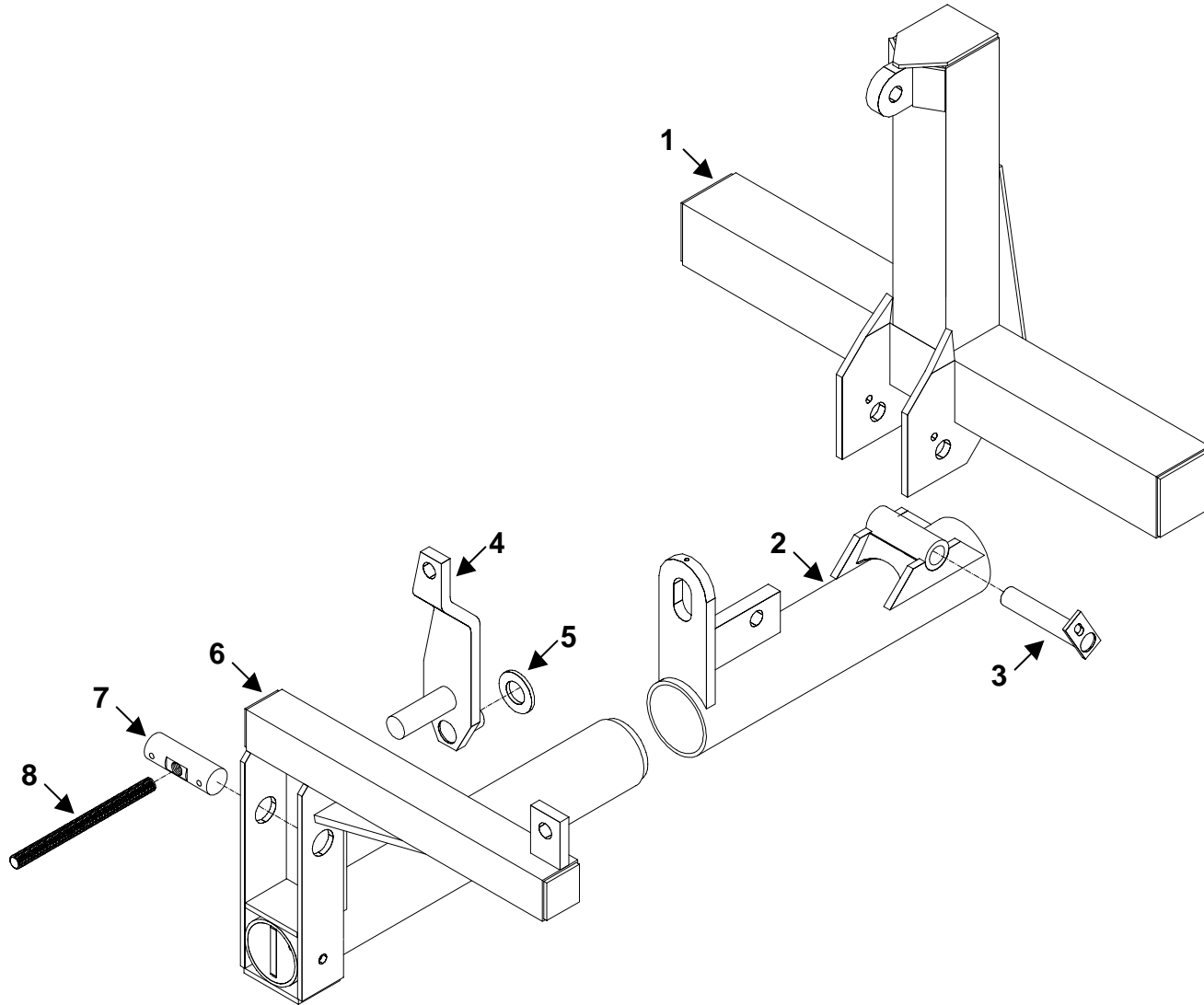
20098-1-1 Tractor Mount Assembly



20098-1-1 Tractor Mount Assembly

<i>Ref</i>	<i>Part No.</i>	<i>Description</i>	<i>Parts – Assembly</i>	<i>Will Fit SN</i>	<i>Remarks</i>
1	MOU-212	Mount. Adjuster (Windrower)	2	20095001-	
2	MOU-210	Mount. Tractor (Windrower)	2	20095001-	
3	BRA-217	Bracket, Tractor, Rear (Windrower)	2	20095001-	
4	BRA-0003	Bracket, Front Mounting (Windrower)	4	20096001-	
5	BRA-219	Bracket, Tractor Mount, Front (Windrower)	1	20095005 20096001-	

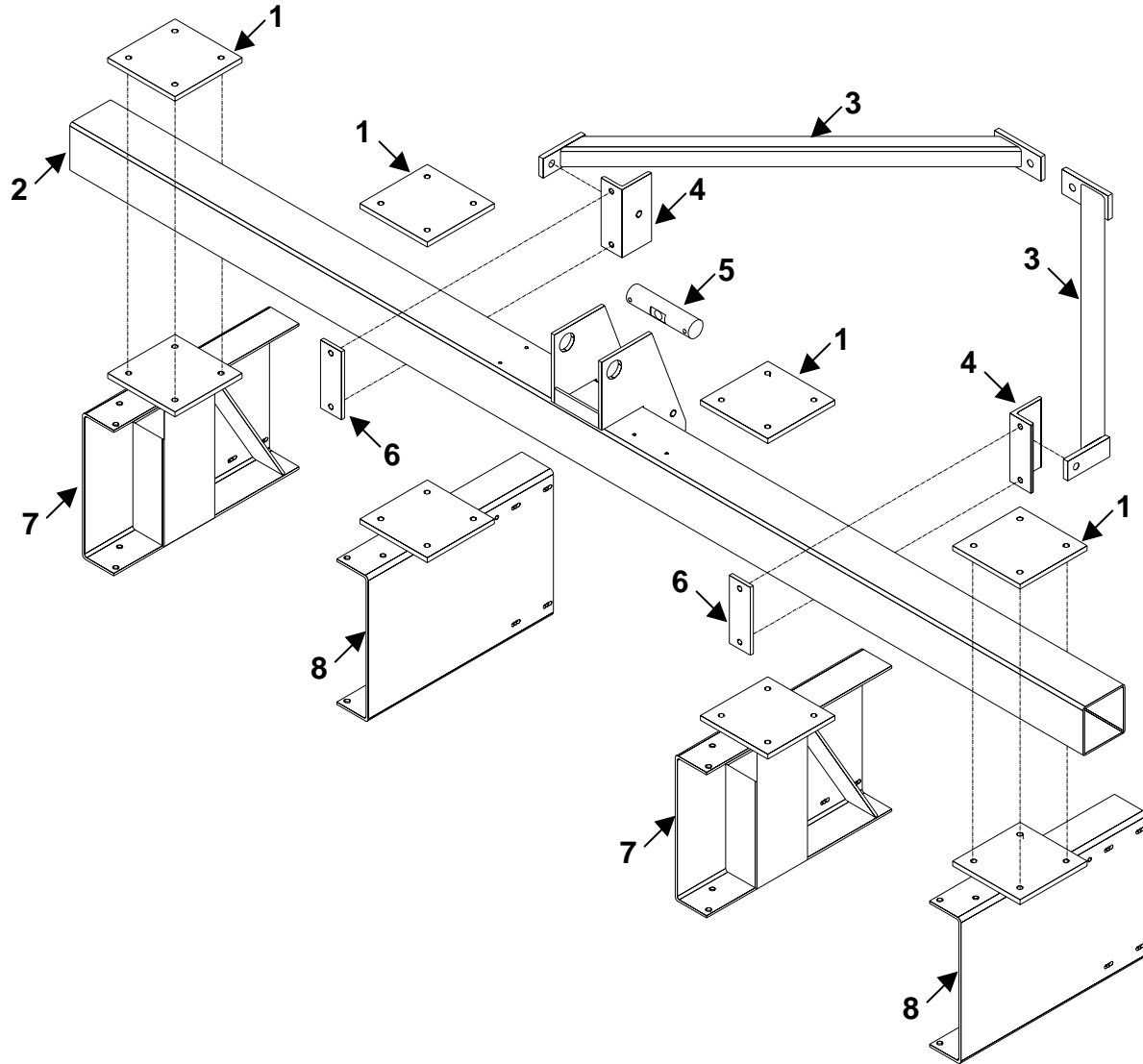
20098-2-1 Lift & Tilt Assembly



20098-2-1 Lift & Tilt Assembly

<i>Ref</i>	<i>Part No.</i>	<i>Description</i>	<i>Parts – Assembly</i>	<i>Will Fit SN</i>	<i>Remarks</i>
0	GF-1428	Grease Fitting 1/4" x 28 straight	3	20095001-	
0	GF-1428-90	Grease Fitting 1/4" x 28 90	2	11001- 20095001-	
0	PIN-8-350R	Roll Pin. 1/2 x 3 1/2	2	20095001-	
1	SUP-210	Support, Cylinder Mount (Windrower)	1	20095001-	
2	SUP-201	Support, Cylinder (Windrower)	1	20095001-	
3	PIN-102	Pin, Support (Windrower)	1	20097001-	Replaces PIN-101
4	ARM-250	Arm Support (Windrower)	1	20095001-	
5	SPA-181	Spacer, Pivot Pin (Windrower)	1	20095006-	
6	SUP-256	Support, Frame (Windrower)	1	20096001-	Replaces SUP-250
7	ADJ-256	Adjuster, Tilt & Lift (Windrower)	1	20096001-	
8	ADJ-246	Adjuster, Lift & Pivot (Windrower)	1	20096001-	

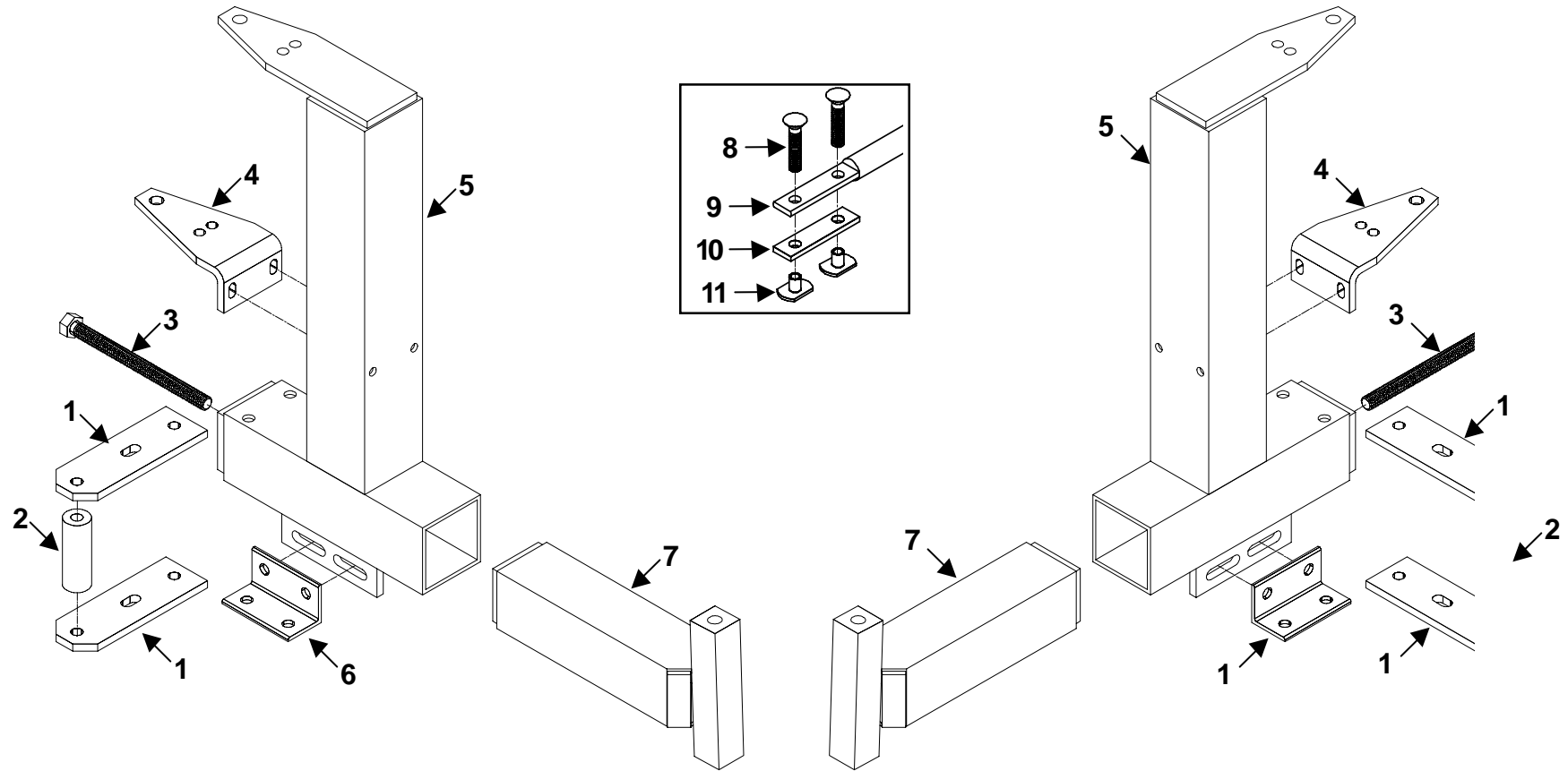
20098-3-1 Gathering Bracket Mount Assembly



20098-3-1 Gathering Bracket Mount Assembly

<i>Ref</i>	<i>Part No.</i>	<i>Description</i>	<i>Parts – Assembly</i>	<i>Will Fit SN</i>	<i>Remarks</i>
0	DC-1176	Decal, Danger-Hand Chain Sprockets	4		
0	DC-1180	Serious Injur/Death Decal	1		
0	DC-1182	Decal, Small White 3 1/4" x 23"	1	Plastic Wrapper & Windrower	
0	DC-1183	Company Information Decal, 3" x 7.7.5"-	1		
1	MOU-101	Mount Plate (Windrower)	4	20096001-	
2	BAR-406	Bar, Tool (Windrower)	1	20096001-	Replaces BAR-400
3	BAR-414	Bar, Side (Windrower)	2	20096001-	
4	BRA-414	Bracket, Angle (Windrower)	2	20096001-	
5	ADJ-406	Adjuster, Tilt & Lift (Windrower)	1	20096001-	
6	MOU-414	Mount, Bracket	2	20096001-	
7	BRA-111	Bracket, Right (Windrower)	2	20096001-	
8	BRA-101	Bracket, Left (Windrower)	2	20096001-	

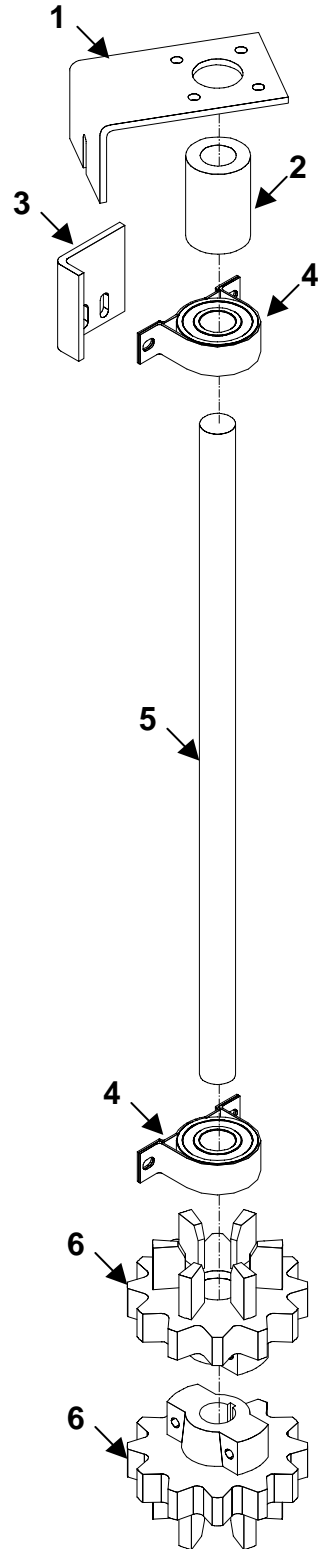
20098-3-2 Gathering Chain Assembly



20098-3-2 Gathering Chain Assembly

Ref	Part No.	Description	Parts – Assembly	Will Fit SN	Remarks
0	BC-6-1236-60	Gathering chain, 3/8 bars 12in wide x 60 links 36mm	2	19101-20095001-	
0	BL-8-1200-T	1/2-13 X 12" Hex head Tap Bolt Grade 5 Plated	2	195-208K	
0	DC-1174	Decal, Danger Keep Hands and Feet Away	4		
0	RLT-035-228	Roller 3.5 dia x 2.2 x 1/2" bore, no flange	6		
0	RLT-535-2210-RV	5" Flange Roller 2.2 WF 3.5 dia. 5/8" bore w/ Inverted Spindle	4		
0	SUP-0001	Support. Rollers gathering chains	4	20095001-	
1	BRA-184	Bracket, Roller	4	20095001-	
2	192-107A	Slide Guide Roller	2	60096001- 61396001- 19101- 194-161K 194-901	
3	BL-10-800-T	5/8-11 X 8 HEX TAP G5 ZC	2	19401- 20095001- 194-161K	
4	BRA-1811	Mounting Bracket, Gathering Chain	4	194-161K 20096001- 60096001- 61096001- 61395001-	
5	BRA-1821	Gathering Chain Bracket	4	19601- 20096001- 194-161K	
6	BRA-171	Bracket, Roller (Windrower)	2	20095001-	
7	ADJ-155	Adjuster, Nose Tightener, Gathering Chain	2	19601- 20096001- 194-161K	
8	BC-1032-FS	10-32 x 1 1/4" bolts Flat Socket Head	0	11001	For Clip Splice Option Sub 191-694
9	BC-6-12-ST	3/8" x 12" Belted Chain Rod for 50mm Belt	0	1910119320	
10	BC-BP20-10-T	20mm Backing Plates /10-32 T Nuts	0		
11	BC-1032-TN	10-32 T Nuts	0	11001	Lap Splice Option

20098-3-3 Gathering Chain Drive Assembly



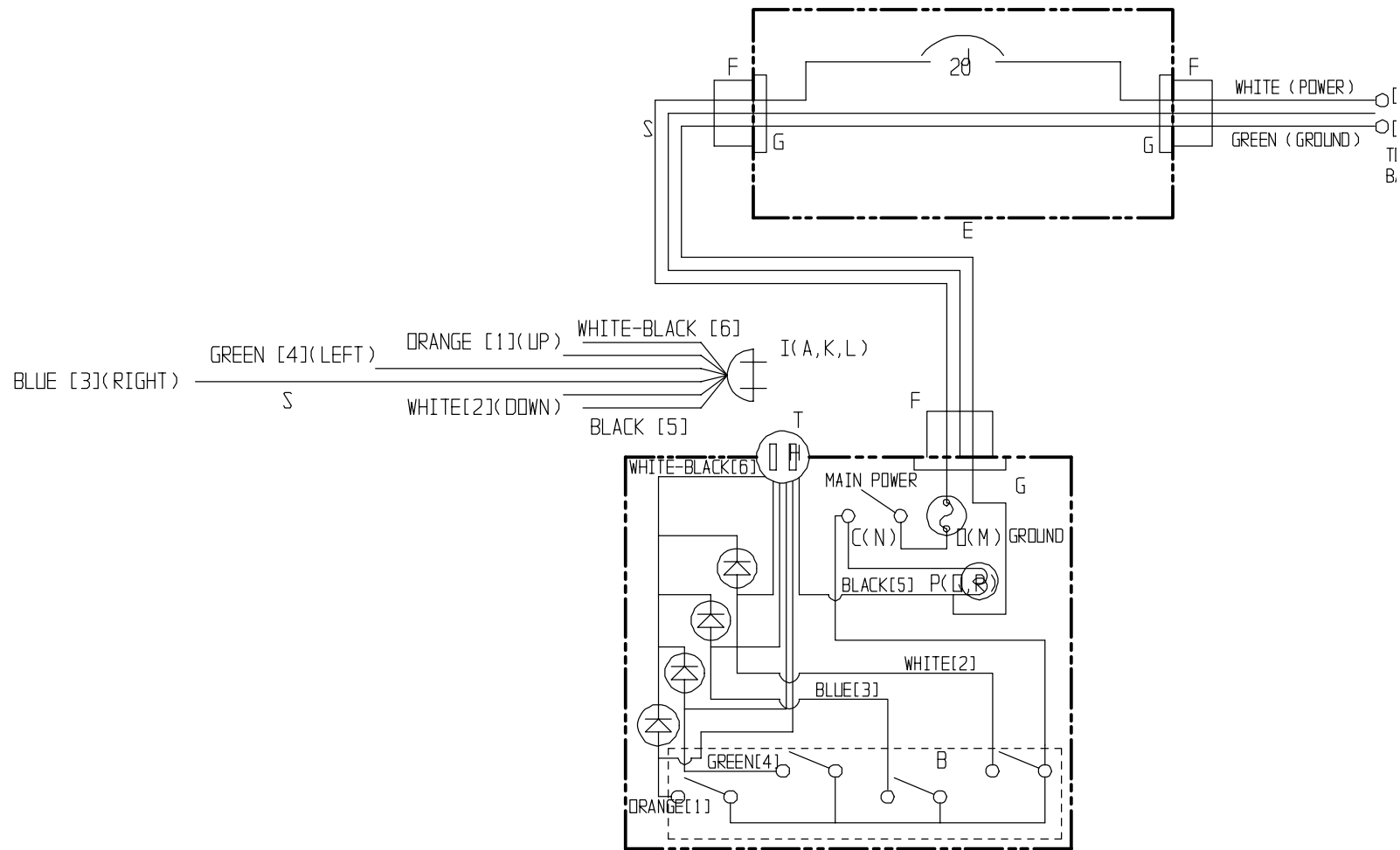
20098-3-3 Gathering Chain Drive Assembly

<i>Ref</i>	<i>Part No.</i>	<i>Description</i>	<i>Parts – Assembly</i>	<i>Will Fit SN</i>	<i>Remarks</i>
0	KEY-4-4-16	Shaft Key 1/4" X 1/4" X 1" Square Cut (1018)	2	20095001-	
0	KEY-5-5-32	Shaft Key 5/16"sq x 2" Square Cut (1018)	1	20095001- 194-231K	
1	193-806	Mount motor	1	19301- 20095001- 30095001- 194-806K KIT-0007	
2	CPS-6060	Steel Coupler (offcenter) 1 1/4" x 1"	1	19101- 20096001- 30095001- 62396001-	
3	193-806A	Motor mount stop	1	19301- 20095001- 30095001- KIT-0001	
4	BR-062-MPB	Stamped Bearing Housing for 1 1/4" bearing	2	20095001- KIT-1700 194-231K 195-208K	
4	BR-125-062	Bearing, 1 1/4 Fafnir tri-seal	2	11001- 20095001- KIT-1700 194-231K 195-208K	
5	SFT-101	Shaft (Windrower)	1	20095001-	
6	SP-3612-20-4	Sprocket, HS-3612 1 1/4 bore	2	11001- 20095001-	Sub SPU-3612-20-4

20098-4-1 Hydraulics

<u>Ref</u>	<u>Part No.</u>	<u>Description</u>	<u>Parts – Assembly</u>	<u>Will Fit SN</u>	<u>Remarks</u>
1	A-6902-10-8	10 SAE X 1/2" FPX 45	5	20095001-	
2	A-6901-10-8	10 SAE x 1/2 FPX90	5	20095001- HV-1045K	
3	A-6900-8-6	8 SAE x 3/8" FPX	4	20095001-	
4	A-6900-10-8	10 SAE x 1/2 FPX	1	20095001-	
5	A-6401-10-8	10 SAE x 1/2 MPT Male	1	20095001-	
6	A-1603-8-8-8	Swivel T 1/2" NPTF	1	20095001-	
7	A-6901-8-6	8 SAE x 3/8" FPX90	4	20095001-	
9	HC-200-0808	Hydraulic Cylinder 2" x 8" #8 SAE Ports	1	19201- 20095001-	Same as sliding hitch
10	HC-350-0808	Hydraulic Cylinder 3 1/2" x 8" #8 SAE Ports	1	20095001-	
11	HM-204-CH	Char-Lyn Hydraulic Motor	4		
12	H10-288-8MP-8MP	5/8" hose 1/2MP x 1/2MP x 288" long	1	20095001-	
13	H10-50-8MP-8MP	5/8" hose 1/2MP x 1/2MP x 50" long	3	20095001-	
14	H10-66-8MP-8MP	5/8 in hose 1/2MP x 1/2MP x 66 in long	1		
15	H10-41-8MP-8MP	5/8" hose 1/2MP x 1/2MP x 41" long	1	20095001-	
16	H10-38-8MP-8MP	5/8" hose 1/2MP x 1/2MP x 38" long	1	20095001-	
17	H10-252-8MP-8MP	5/8 in. hose 1/2MP x 1/2MP x 252 in long	1	20095001-	
18	H4-54-6MP-6MP	1/4" hose 3/8MP x 3/8MP x 54" long	1	20095001-	
19	H4-41-6MP-6MP	1/4" hose 3/8MP x 3/8MP x 41" long	1	20095001-	
20	H4-33-6MP-6MP	1/4 hose 3/8MP x 3/8MP x 33" long	1	20095001-	
21	H4-22-6MP-6MP	1/4" hose 3/8MP x 3/8MP x 22" long	1	20095001-	
22	HV-FL30	Flow Control Valve 30GPM	1	20095001-	
23	HVE-1056	Brand Valve Stack for Windrower	1	20095001-	
24	H10-30-8MP-8MP	5/8 in hose 1/2MP x 1/2MP x 30 in	1		
25	A6806-10-8	10 SAE x 1/2 MP 90°	1		

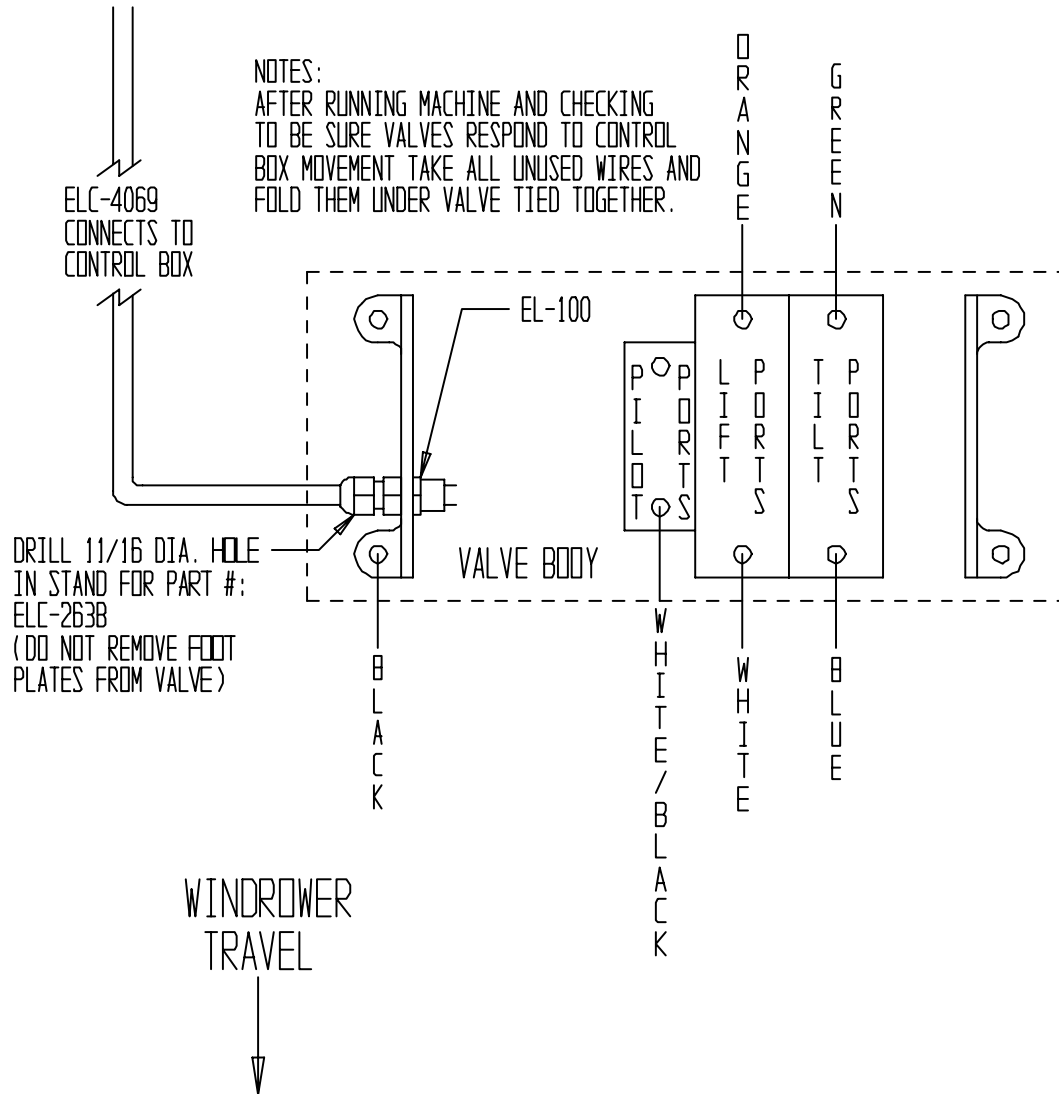
20098-5-1 Electrical



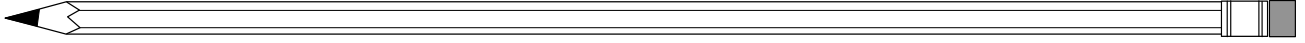
20098-5-1 Electrical

<i>Ref</i>	<i>Part No.</i>	<i>Description</i>	<i>Parts – Assembly</i>	<i>Will Fit SN</i>	<i>Remarks</i>
0	EL-0100	Midqet Bulb for Lamp	0		
0	EL-0101	Red Plastic Lens	0		
0	EL-0350	Pilot Light, Lamp Holder Base	0		
0	EL-101	Lock Nut for Electrical Connectors 1/2"	0		
0	EL-1322	Crimp Pin for AMP Plug	0		
0	EL-1323	Socket For AMP Plug	0		
0	EL-14D0	Switch Boot	0		
0	EL-60361	AMP Receptacle 16 position	0		
0	EL-60371	AMP Plug 16 position	0		
0	EL-60701	AMP Cable clamp (16)	0		
0	EL-865	Automotive Fuse 6 Amp	0		
0	EL-HKP	Fuse Holder	0		
0	ELB-20	Breaker, 20 amp	0		Replaces 191-1210
0	ELC-163SO	16ga 3 Conductor Cable @ft	0		
0	ELC-2612	1/2" Plastic Cord Connector	0		
0	ELE-1938	Breaker Box for Power Cord (Tractor)	0		Replaces EL-C980DF
0	ELE-888	Electrical Enclosure (SMALL BOX)	0		
0	ELS-2T	Two Position Toggle Switch (50 Amp)	0		
0	ELS-4J	Joystick Switch	0		
0	ELT-32704	Ring Terminal 5/16 x 10-12 ga	0		

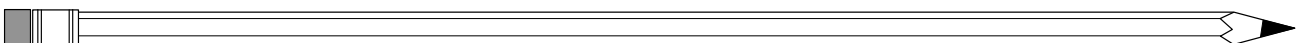
20098-5-2 Valve Wiring Detail



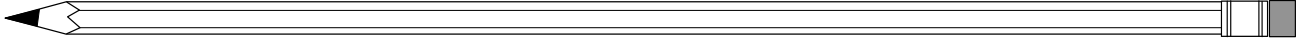
NOTES



A large, empty rectangular box with a thin black border, intended for writing notes.



NOTES



A large, empty rectangular box with a thin black border, intended for writing notes.

