

BUILT TO WORK THE WAY YOU WORK



OPERATION & PARTS MANUAL



PIK RITE, INC.

60 PIK RITE LANE
LEWISBURG, PA 17837

FAX 570-523-8175
PHONE 800-326-9763
WWW.PIKRITE.COM/SPREADERS

PROUDLY MADE IN THE USA





HYDRA-RAM 880 BUSHEL HYDRAULIC PUSH MANURE SPREADER

(SPECIFICATIONS AND DESIGN SUBJECT TO CHANGE WITHOUT NOTICE)

DIRECTION ARROW

ARROWS ARE USED WITH ILLUSTRATIONS TO INDICATE THE FRONT OF THE UNIT. “RIGHT-HAND” AND “LEFT-HAND” SIDES ARE DETERMINED BY FACING THE DIRECTION OF MACHINE FORWARD TRAVEL.

BOX ENCLOSED ILLUSTRATIONS

A REFERENCE NUMBER, SHOWN IN THE PARTS LIST, IS ASSIGNED TO A BOX ENCOMPASSING ALL PARTS SOLD AS A SERVICE ASSEMBLY.

REFERENCE NUMBER IDENTIFICATION

000-099 PARTS USED FOR ASSEMBLY BOLTS & FASTENERS

800-899 REPLACEMENT PARTS OR SERVICE ASSEMBLIES – USED TO REPLACE OR REBUILD COMPONENTS OF THE MACHINE

Some illustrations may not represent the spreader model you have; however, the principles of operation and maintenance are the same. If you have questions specific to your spreader please contact your dealer.

Table of Contents

OPERATORS MANUAL.....	7
SAFETY.....	8
PREPARING THE TRACTOR.....	15
PREPARING THE SPREADER	18
CONTROLS.....	20
ATTACHING THE SPREADER.....	21
DETACHING THE SPREADER	25
TRANSPORTING.....	26
OPERATING THE SPREADER.....	29
ATTACHMENTS.....	34
WHEELS AND TIRES	34
LUBRICATION & MAINTENANCE.....	36
SPECIFICATIONS	44
PARTS MANUAL.....	45
7519-01-01 MAIN FRAME, HITCH, & FLOOR	46
7519-01-02 FRONT SHIELDS	48
7519-01-03 SLIDING FLOOR.....	50
7519-01-04 PUSHER	52
7519-01-05 ENDGATE	54
7519-01-06 AXLE & WALKING BEAM, WS COMPATIBLE	56
7519-01-07 WHEELS & TIRES	58
7519-01-08 OPTIONAL - WEIGHT SCALE ASSEMBLY, 5 POINT SYSTEM	60
7519-02-01 1000 RPM DRIVE LINE	62
7519-02-02 MAIN DRIVE SHAFT.....	64
7519-02-03 VERTICAL BEATERS	66
7519-02-03A REFERENCE - VERTICAL BEATER GEARBOX	70
7519-03-01 HYDRAULICS, PUSH CYLINDERS.....	72
7519-03-02 HYDRAULICS, ENDGATE CYLINDERS.....	74
7514-03-03 CYLINDERS, SLIDING FLOOR	76
7514-03-04 CYLINDERS, MAIN PUSHER CYLINDER.....	78
7514-03-05 CYLINDER, SECONDARY PUSHER.....	80
7519-03-06 CYLINDER, ENDGATE.....	82
7519-04-01 AIR BRAKES	84
7519-04-02 HYDRAULIC BRAKES.....	88
7519-05-01 ELECTRICAL & LIGHTING.....	90
7519-05-02 SAFETY TOW CHAIN	92
7514-05-03 JACK STAND.....	93
7514-05-04 SMV EMBLEM & BRACKETS	94
7514-06-01 DECALS, FRONT OF SPREADER	96
7514-06-02 DECALS, SIDE & REAR.....	98
WARRANTY	101

OPERATORS MANUAL

SAFETY

RECOGNIZE SAFETY INFORMATION

This is the safety-alert symbol. When you see this symbol on your machine or in this manual, be alert to the potential of personal injury.

Follow recommended precautions and safe operating practices



UNDERSTAND SIGNAL WORDS

A signal word – DANGER, WARNING, or CAUTION—is used with the safety-alert symbol. DANGER identifies the most serious hazards.

DANGER or WARNING safety signs are located near specific hazards. General precautions are listed on CAUTION safety signs. CAUTION also calls attention to safety messages in this manual.

 **DANGER**

 **WARNING**

 **CAUTION**

FOLLOW SAFETY INSTRUCTIONS

Carefully read all safety messages in this manual and on your machine safety signs. Keep safety signs in good condition. Replace missing or damaged safety signs. Be sure new equipment components and repair parts include the current safety signs. Replacement safety signs are available from your Pik Rite dealer.

Learn how to operate the machine and how to use controls properly. Do not let anyone operate without instruction.

Keep your machine in proper working condition. Unauthorized modifications to the machine may impair the function and/or safety and affect machine life.

If you do not understand any part of this manual and need assistance, contact your Pik Rite dealer.



KEEP SHIELDS IN PLACE

Do not operate spreader without safety shields in place.

Rotating parts can crush or dismember causing death or personal injury.

Disconnect PTO driveline and hydraulic lines from tractor before removing shields for adjustment or service.



PROTECT BYSTANDERS

Never operate the spreader near people.

Do not place rocks, timbers or other solid objects in the spreader. Objects can be thrown great distances causing injury to people.



OPERATE SPREADER SAFELY

Rotating parts can entangle or strike people, resulting in death or personal injury.

Never enter a spreader while in operation.

Operate the spreader from the tractor seat only.

Do not exceed load capacity of the spreader. (See Transporting section).

Reduce speed when turning or traveling on rough terrain. Avoid traveling over loose fill, rocks, ditches or holes.

When working on inclines or slopes, travel uphill or downhill. Keep tractor in gear when traveling downhill.



SAFETY

PARK SPREADER SAFELY

Park spreader on a level surface and block wheels.

Close endgate.

Secure jackstand with pin (A).



KEEP RIDERS OFF MACHINE

KEEP RIDERS OFF;

Riders are subject to injury such as being struck by foreign objects and being thrown off the machine. Riders also obstruct the operator's view resulting in the machine being operated in an unsafe manner.



STAY CLEAR OF RAISED ENDGATE

Contact with a lowering endgate can cause death or personal injury.

Lower endgate and disconnect hydraulic lines before servicing or adjusting.



CAUTION: DO NOT WELD, CUT OR CHANGE THE LOCATION OF BEATER KNIVES AND CLAWS. THIS CAN RESULT IN UNBALANCED ROTORS, CAUSING PREMATURE WEAR OR FAILURE OF COMPONENTS ON SPREADER!

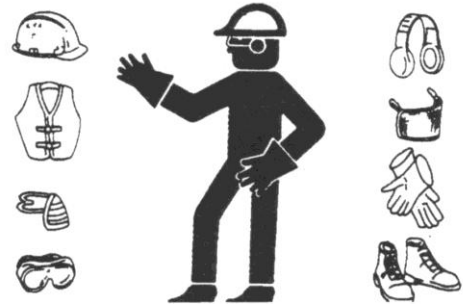
WEAR PROTECTIVE CLOTHING

Wear close fitting clothing and safety equipment appropriate to the job.

Prolonged exposure to loud noise can cause impairment or loss of hearing.

Wear a suitable hearing protective device such as earmuffs or earplugs to protect against objectionable or uncomfortable loud noises.

Operating equipment safely requires the full attention of the operator. Do not wear radio or music headphones while operating machine.



STAY CLEAR OF ROTATING DRIVELINES

Entanglement in rotating driveline can cause serious injury or death.

Keep tractor master shield and driveline shields in place at all times. Make sure rotating shields turn freely.

Wear close fitting clothing. Stop the engine and be sure PTO driveline is stopped before making adjustments, connections, or cleaning out PTO driven equipment.



STAY CLEAR OF ROTATING BEATER

Rotating beater can entangle or strike causing death or personal injury.

Do not clean out or service spreader while beater is rotating.

Disconnect PTO driveline and make sure all parts have stopped rotating before cleaning or servicing.

WARNING: DO NOT CUT OR WELD ON VERTICAL BEATER ATTACHMENT, SERIOUS INJURY OR DEATH COULD OCCUR WHEN OPERATING.

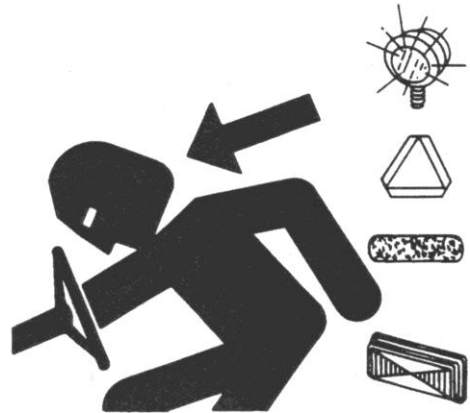


USE SAFETY LIGHTS AND DEVICES

Slow moving tractors, self-propelled equipment and towed implements or attachments can create a hazard when driven on public roads. They are difficult to see, especially at night. Avoid personal injury or death resulting from collision with a vehicle.

Flashing warning lights and turn signals are recommended whenever driving on public roads. To increase visibility, use the devices provided with your machine. For some equipment, install extra flashing warning lights.

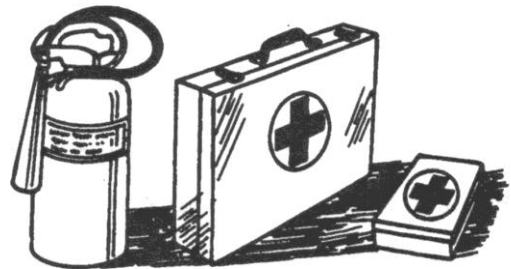
Keep safety items in good condition. Replace missing or damaged items.

**PREPARE FOR EMERGENCIES**

Be prepared if a fire starts.

Keep a first aid kit and fire extinguisher handy.

Keep emergency numbers for doctors, ambulance service, hospital, and fire department near your telephone.

**USE A SAFETY CHAIN**

A safety chain will help control drawn equipment should it accidentally separate from the drawbar.

Using the appropriate adapter parts, attach the chain to the tractor drawbar support or other specified anchor location. Provide only enough slack in the chain to permit turning.

See your Pik Rite dealer for a chain with a strength rating equal to or greater than the gross weight of the towed machine. Do not use safety chain for towing.



REDUCE SPEED WHEN TOWING LOADS

Braking to stop towed loads from transport speeds can cause the towed load to swerve and upset. Reduce speed if towed load weighs more than the tractor and is not equipped with brakes.

Follow recommended speed-weight ratio guidelines:

- Maximum speed is 20 mph (32 km/h) when towing loads equal to or less than the tractor.
- Reduce speed to 10 mph (16 km/h) when towing loads more than equal and up to double the tractor weight.
- Do not tow loads exceeding double the tractor weight.
- Use additional caution when towing loads under adverse surface conditions, when turning, and on inclines.

**SERVICE SPREADER SAFELY**

To help prevent personal injury caused by unexpected movement, be sure to service spreader on level surface.

If spreader is connected to tractor, disengage PTO, engage parking brake and/or place transmission in "PARK," shut off engine and remove key.

If spreader is detached from tractor, block wheels and use safety stands to prevent movement.

Replace all shields after lubricating or servicing.



AVOID HIGH-PRESSURE FLUIDS

Escaping fluid under pressure can penetrate the skin causing serious injury.

Avoid the hazard by relieving pressure before disconnecting hydraulic or other lines. Tighten all connections before applying pressure.

Search for leaks with a piece of cardboard. Protect hands and body from high pressure fluids.

If an accident occurs, see a doctor immediately. Any fluid injected into the skin must be surgically removed within a few hours or gangrene may result. Doctors unfamiliar with this type of injury should reference a knowledgeable medical source.



PREPARING THE TRACTOR

APPROVED TRACTORS, MODEL HR880

Row Crop Tractors with 200 HP PTO rating or larger are approved for operation with the HR880 Spreader.

Utility Tractors are NOT APPROVED because of drawbar weight limitations and the inability to ballast the tractor enough to meet requirements for towing.

A drawbar support is required on tractor with a drawbar size of no less than 1-1/2 x 3 in.

Tractor hydraulic oil reservoir must have capacity for 3.7 U.S. gal. net draw for spreader with endgate or 3.1 U.S. gal. without endgate.

Tractor standby hydraulic pressure must be between 1500 psi minimum

One selective control valves is required to operate the spreader.

A second selective control valve is required to operate the endgate.

CHOOSING CORRECT PTO SPEED

MODEL 1880VB – 1000 rpm only

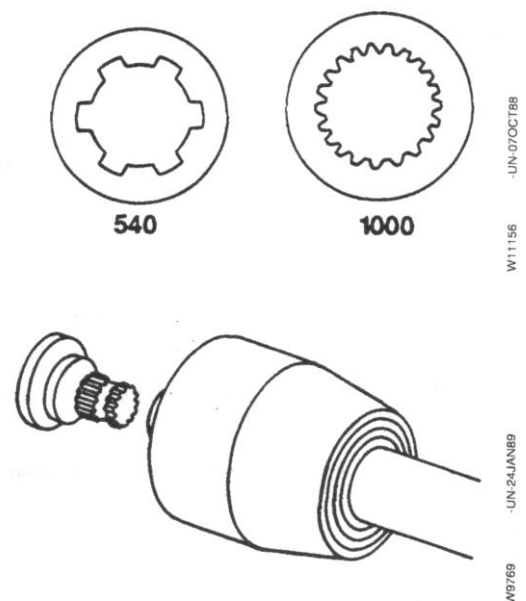
IMPORTANT: Drive components can be damaged. Under no circumstances should a machine equipped for 540 rpm PTO be operated by a tractor equipped with 1000 rpm PTO. Nor should a 1000 rpm PTO machine be operated with a tractor equipped with 540 rpm PTO.

Use the 1000 rpm speed for heavy spreading applications that require higher horsepower.

The 540 rpm speed should be limited to light spreading applications that DO NOT require high horsepower.

Transmitting power at 540 rpm requires almost twice as much torque. Continuous operation of 540 rpm at these higher power levels can reduce the life of the beater drive components.

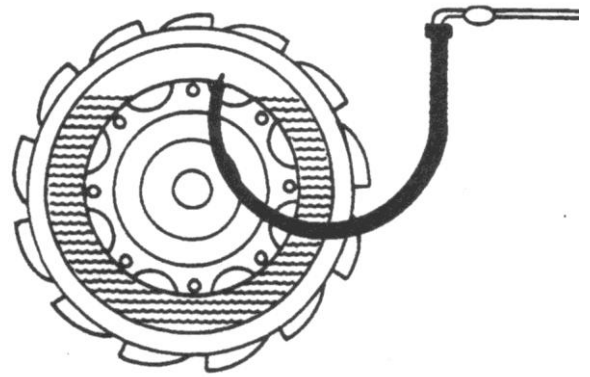
Generally, under similar conditions, the 1000 rpm beater drive components will provide longer life than those for 540 rpm.



BALLASTING THE TRACTOR

CAUTION: Do not tow loads that weigh more than twice the tractor weight. (See Recommended Maximum Towing Speed in Transporting section.)

To ensure proper stability, adjust ballast and wheel spacing according to tractor operator's manual.



POSITIONING DRAWBAR

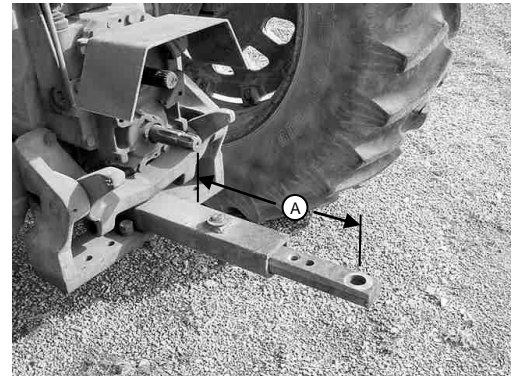
IMPORTANT: Tractor PTO and machine driveline can be damaged. Be sure drawbar length is properly set. If equipped with clevis, remove it. Lock drawbar along tractor centerline with offset down.

Remove clevis if equipped.

Adjust drawbar length (A) (see picture) to help prevent driveline damage.

PTO Speed	Dimension (A)
1000 rpm-1/3/4	508mm (20in.)

A tractor drawbar support is required on tractors with a drawbar size of less than 1-1/2 x 3 in.



USING SELECTIVE CONTROL LEVERS TO CONTROL FLOOR SPEED

Floor and moving panel speed can be controlled by using tractor selective control lever to extend and retract cylinders.

Adjust selective control valve lever to provide the slowest operating speed. (See your tractor operator's manual).

Maximum hydraulic oil flow through the spreader control valve is 6.8 gpm. Trying to force through more oil than this, may create a pressure drop.

SETTING HYDRAULIC SPEED ENDGATE OPERATION

IMPORTANT: Excessive operating speed may cause machine damage. Adjust selective control valve lever to provide correct operating speed.

Adjust selective control valve lever, it should take two to three seconds to fully extend or retract the cylinder. (See your tractor operator's manual).

CHECKING TRANSMISSION/HYDRAULIC OIL LEVEL

Cycle all hydraulic cylinders fully two or three times.

Fully retract all cylinders.

Check transmission/hydraulic oil level. (See your tractor operator's manual.)

PREPARING THE SPREADER

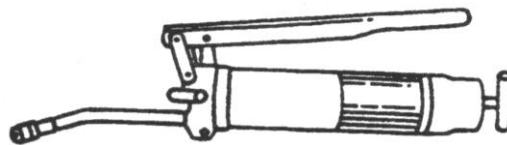
CHECKING TIRES

1. Check tires daily for damage or noticeably low pressure.
2. Repair any cuts or breaks as soon as possible.
3. Protect tires from exposure to sunlight and petroleum products or chemicals.



LUBRICATING THE MACHINE

Be sure the machine has been adequately lubricated.
(See Lubrication and Maintenance page.)



**TIGHTENING WHEEL
HARDWARE**

IMPORTANT: Operating the spreader with loose wheel hardware will damage the hub or wheel. Tighten hardware after initial transport, after one hour of operation, and every fifty hours thereafter.

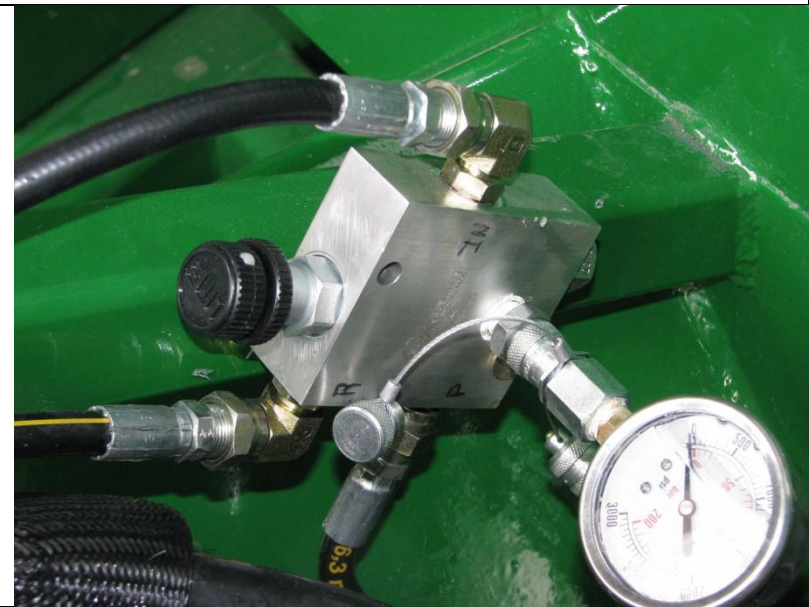
Tighten to 475 lb-ft of torque in the sequence shown.

Tire Size	Wheel Size	Tire Pressure
700/40-22.5 treaded	22.5 x 16	65 PSI



**BRAKE ADJUSTMENT
(HYDRAULIC)**

Valve is set from Factory at 1000 PSI.



CONTROLS

OPERATING THE BEATER

To start beater, engage PTO lever slowly, at low engine rpm.

To stop beater, disengage PTO. (See your tractor operator's manual.)

For best spreading results, operate the tractor engine at "PTO RATED" speed.

Warning: Do not operate the pusher/sliding floor without running the beaters as this may damage the spreader

OPERATING THE ENDGATE

IMPORTANT: Contact of sliding floor/moving panel with endgate will cause damage. To avoid contact with sliding floor, endgate must be fully raised to open sequencing valve mounted on endgate.

Operate the endgate with the second auxiliary control valve lever.

Warning: Endgate is not a metering device; doing so may cause damage to the spreader.



OPERATING SLIDING FLOOR/MOVING

PANEL USING METERING CONTROL VALVE

To extend the sliding floor and moving panel lock control lever in operating position.

To retract the sliding floor/moving panel, move control lever in opposite direction.

See your tractor's operating manual for information on how to control flow rates of your hydraulic system.

Maximum hydraulic oil flow through the spreader control valve is 6.8 gpm. Trying to force through more oil than this, may create a pressure drop.

ATTACHING THE SPREADER

ATTACHING SPREADER

CAUTION: Help prevent personal injury caused by unexpected movement of the machine. Engage parking brake and/or place transmission in “PARK”, shut off engine, and remove key before working around hitch.

1. Attach with a 1-1/2 or 2 in. pin and secure. (Top clevis required)

IMPORTANT: Shorten safety chain to allow only enough slack required for turning.

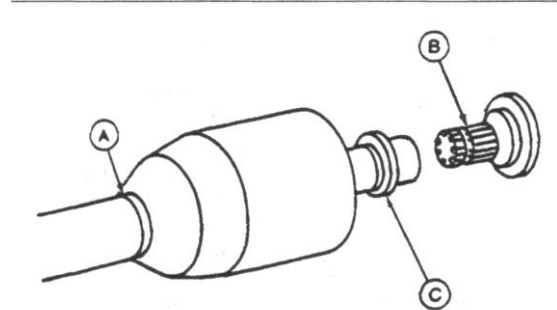
2. Lock safety hook onto chain.



ATTACHING DRIVELINE

IMPORTANT: Avoid causing damage to shielding, **DO NOT** use bell on driveline to lift driveline into position.

1. Support driveline, cradling it in your hand.
2. Rotate driveline (C) or tractor PTO (B) to align splines.
3. Pull collar (C) rearward and push forward on bell (A) to engage driveline yoke with tractor PTO (B).
4. Pull back on PTO driveline shielding to be sure driveline is locked. **DO NOT** pull on collar, this will release latch.



CONNECT HYDRAULIC HOSES

CAUTION: To avoid injury from escaping hydraulic oil under pressure, relieve the pressure in the system by shutting off the tractor and moving remote cylinder operating levers in both directions before attaching hoses to or detaching hoses from the breakaway couplers.



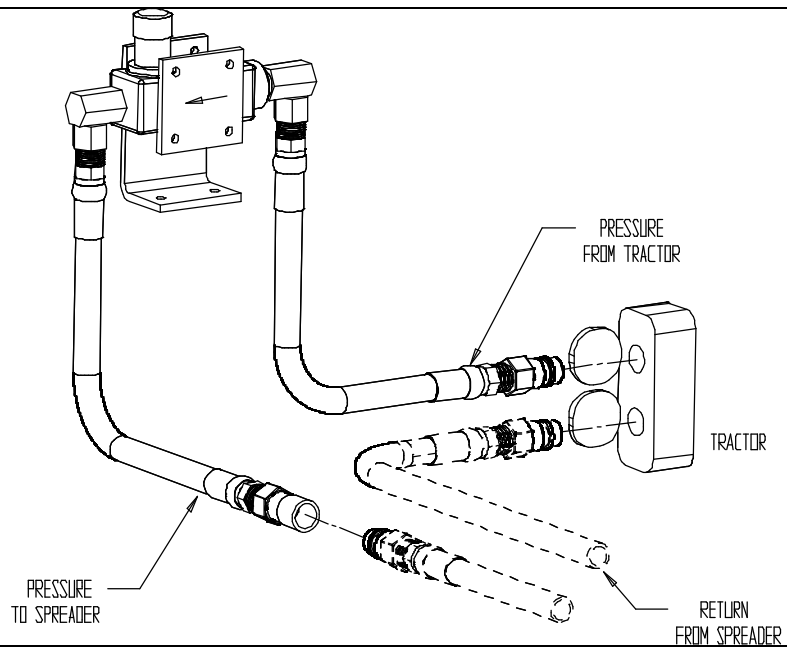
ATTACHING THE SPREADER

CONNECTING HYDRAULIC HOSES TRACTOR WITH CLOSED CENTER HYDRAULIC SYSTEM

Attach control valve to tractor where it can be reached by the operator.

Attach hoses accordingly.

(Diagram shows unloading configuration, flow reverses to retract.)

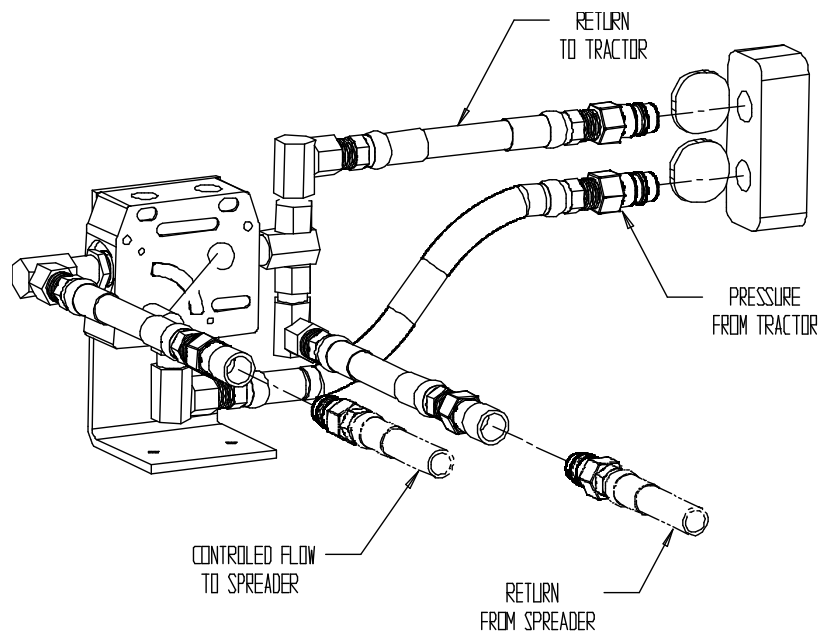


CONNECTING HYDRAULIC HOSES TRACTOR WITH OPEN CENTER HYDRAULIC SYSTEM

Attach control valve to tractor where it can be reached by the operator.

Attach hoses accordingly.

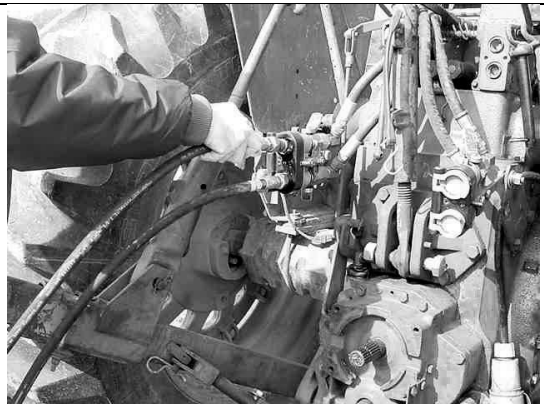
(Diagram shows unloading configuration, flow reverses to retract.)



ATTACHING THE SPREADER

CONNECTING ENDGATE HYDRAULIC HOSES

1. Connect pressure hose to pressure port of hydraulic remote coupler.
2. Connect return hose to return port of hydraulic remote coupler.



(air assist brakes)

CONNECTING AIR HOSES

1. Connect red line to supply port.
2. Connect blue line to service/control port.



(hydraulic brakes)

1. Connect pressure hoses to pressure ports of hydraulic remote coupler.
2. Connect return hoses to return ports of hydraulic remote coupler.

(Relief factory set 1000psi)



DETACHING THE SPREADER

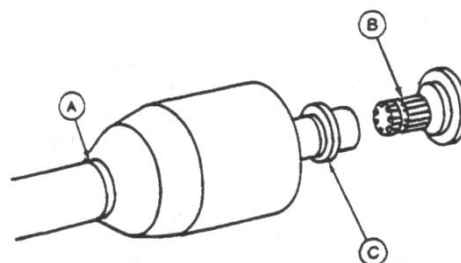
DETACHING SPREADER

1. Remove jackstand from storage position, place and secure in lift position.
2. Detach safety chain.
3. Remove hitch pin.
4. Disconnect hoses and control valve. Store on spreader.



DETACHING DRIVELINE

1. Support driveline (A) and pull rearward on collar (C) to release driveline from tractor PTO (B).
2. When possible store driveline in driveline cradle provided with machine.
3. Replace tractor PTO shields.



TRANSPORTING

USING A SAFETY CHAIN

CAUTION: A safety chain will help control drawn equipment should it accidentally separate from the drawbar while transporting. Using the appropriate adapter parts, attach the chain to the tractor drawbar support or other specified anchor location. Provide only enough slack in the chain to permit turning. See your Pik Rite dealer for a chain with a strength rating equal to or greater than the gross weight of the towed machine.

1. Attach safety tow chain.

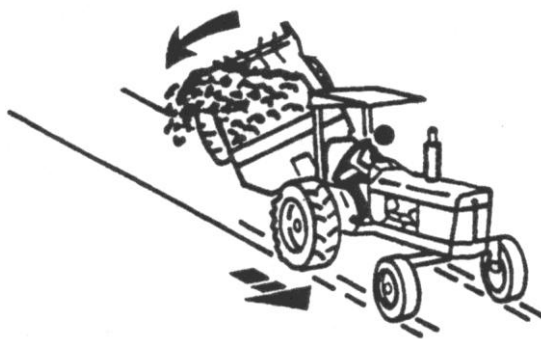


CAUTION: When transporting the machine on a road or highway at night or during the day, use accessory lights and devices for adequate warning to operators of other vehicles. Check local governmental regulations. Keep safety items in good condition. Replace missing or damaged items.

CAUTION: Braking to stop towed loads from transport speeds can cause the towed load to swerve and upset. Reduce speed if towed load is not equipped with brakes and weighs more than the tractor.

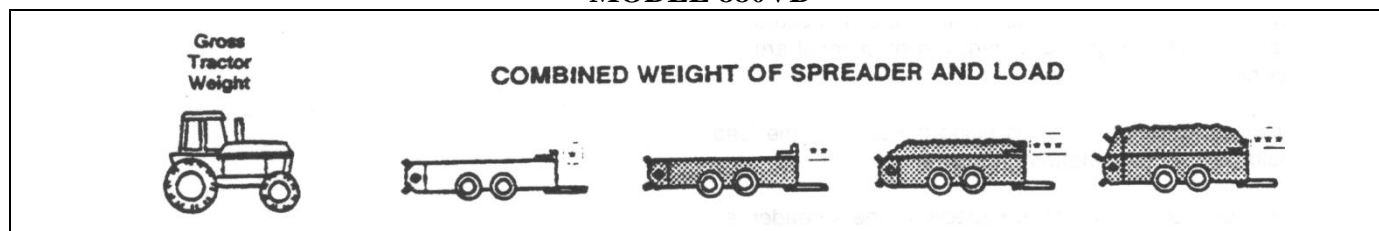
Follow recommended speed-weight ratio guidelines:

- **Maximum speed is 20 mph (32 km/h) when towing loads equal to or less than the weight of the tractor.**
- **Reduce speed to 10 mph (16 km/h) when towing loads more than or up to double the tractor weight.**
- **DO NOT tow loads that exceed double the tractor weight.**
- **Use additional caution when towing loads under adverse road surface conditions (i.e., slippery or rough), when turning and/or on inclines.**
- **For proper tractor size and towing speed see the following “Recommended Maximum Towing Speed” chart.**
- **If necessary, add ballast as described in your tractor operator’s manual.**



TRANSPORTING

MODEL 880VB

Tractor Weight

(0-2997 lb)	Do Not Tow	Do Not Tow	Do Not Tow	Do Not Tow
(2998-5950 lb)	Do Not Tow	Do Not Tow	Do Not Tow	Do Not Tow
(5951-11021 lb)	Do Not Tow	Do Not Tow	Do Not Tow	Do Not Tow
(11022-12123 lb)	Do Not Tow	Do Not Tow	Do Not Tow	Do Not Tow
(12124-14769 lb)	Do Not Tow	Do Not Tow	Do Not Tow	Do Not Tow
(14770-22044 lb)	Do Not Tow	Do Not Tow	Do Not Tow	Do Not Tow
(22045-24910 lb)	(20 mph)	(10 mph)	(10 mph)	(10 mph)
(24911-29540 lb)	(20 mph)	(10 mph)	(10 mph)	(10 mph)
(29541 lb-Up)	(20 mph)	(10 mph)	(10 mph)	(10 mph)

**Base Spreader Empty Load*

***Load struck level consisting of manure with high liquid content.
Calculated at 70 lb/cu ft*

****Load piled 381 mm (15 in.) above beater consisting of semi-solid
type manure. Calculated at 55 lb/cu ft*

*****Load piled at 15 in. above optional upper beater
consisting of semi-solid type manure. Calculated at 55 lb/cu ft*

OPERATING THE SPREADER

PREOPERATING CHECKS

1. Be sure spreader does not contain any foreign objects.
2. Check for correct hydraulic hookup. Raise endgate fully. Cycle sliding floor and moving panel. Lower endgate.
3. Retract sliding floor/moving panel to front of spreader.
4. Close endgate

LOADING THE SPREADER

CAUTION: Do not place rocks, timbers, or other solid objects in the spreader. Objects of this nature can damage the spreader and could also be thrown great distances causing possible injury to anyone standing alongside.

Load front of spreader first, distributing load evenly.

When operating without an endgate, avoid loading manure against the beater.



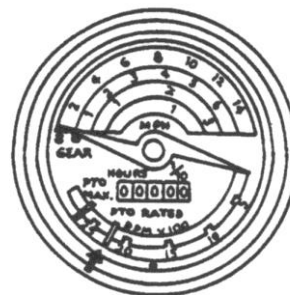
PREPARE TO UNLOAD THE SPREADER

CAUTION: Help prevent personal injury. Be sure no one is near spreader and tractor before operating.

1. Start beater by engaging PTO slowly at low engine rpm. Increase to "PTO RATED" speed.

NOTE: For best spreading results, operate tractor at "PTO RATED" speed.

Warning: Do not operate the pusher/sliding floor without running the beaters as this may damage the spreader



RAISE ENDGATE

IMPORTANT: Contact of apron chain with endgate will cause damage. To avoid contact with apron chain, endgate must be raised fully.



UNLOADING SPREADER USING METERING VALVE

1. Set flow control device to obtain desired rate of unload speed.

Note: Rate of spread is affected by both ground speed and unload speed. Experience will help you determine both gear selection and control knob setting.

2. When spreader is empty, disengage PTO, retract sliding floor/moving panel, and lower endgate.

PRODUCING GOOD SPREADING RESULTS

1. Operate tractor engine at “PTO RATED” speed.
2. Do not overload beater. A clumpy spread pattern will result from too fast of an unload rate.
3. When spreading manure with high liquid content, use a slurry pan attachment to keep manure in contact with the beater. This will prevent liquid material from running out under the beater.
4. When operating without an endgate, avoid loading material against the beater. Otherwise, large clumps of material will be thrown out during the first few turns of the beater.

CLEANING SPREADER IN COLD WEATHER

When operating the spreader during extended periods of subfreezing temperatures, frozen material may build up on steel surfaces or wooden guides. This can prevent the sliding floor (A) and/or moving panel (B) from moving.

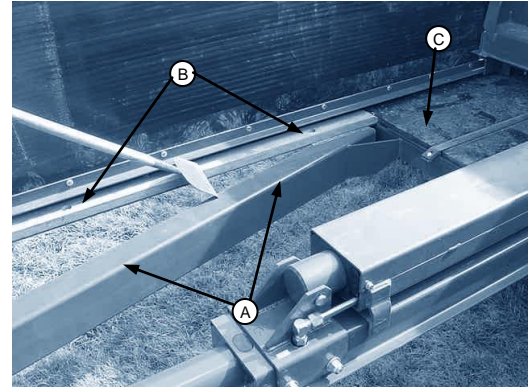
After completing spreading for the day, use the following cleaning procedure.

NOTE: Cleaning is only necessary during extended periods of subfreezing temperatures.

OPERATING THE SPREADER

CAUTION: Help prevent personal injury caused by unexpected movement of the machine. Disengage PTO, engage parking brake and/or place transmission in “PARK”, shut off engine, and remove key before cleaning spreader.

1. Extend and retract the sliding floor/moving panel to remove loose material.
2. Extend sliding floor half way back. Remove accumulated material on frame (A), the tops and sides of wood and steel guides (B), and front edge of floor (C), on each side.



3. Remove accumulated material from rear of moving panel, top of tube (A), and V-section (B).



4. Remove material on the rear steel edge of the main floor and bottom of steel side panels (A).
5. Remove material buildup from endgate panel. Keep endgate arms clean to prevent freezing to side rails.

NOTE: Any buildup which prevents the sliding floor from traveling fully rearward, will prevent the moving panel from being activated.

OPERATING THE SPREADER

6. Retract sliding floor and remove material on the underside of the moving panel. (This cleaning is only necessary in prolonged periods of cold weather).
7. When tire valve stems are mounted towards the inside, clean top of walking beams to prevent valve stem damage.
8. Leave moving panel 12 in. from front of spreader to allow cylinder movement in both directions



WARMING HYDRAULIC OIL TEMPERATURES BELOW 0°F (-18°C)

It is necessary to warm the hydraulic oil for proper spreader operation.

Follow the procedures in your tractor operator's manual for warming hydraulic oil.

The following procedures apply only to tractors with a closed center hydraulic system.



BYPASSING SPREADER CONTROL VALVE

There will be a large hydraulic oil pressure drop across the auxiliary flow control valve when the oil is cold. Oil pressure available to hydraulic cylinders may be too low.

Try cycling the cylinders several times slowly so the cold oil in the cylinders is mixed with the warm oil in the tractor. In the event of extreme cold; you may need to bypass the control valve to do this. Be sure you begin by moving the cylinders very slowly.

Extend and retract sliding floor / moving panel to exchange cold oil from spreader cylinders with warmed tractor hydraulic oil.

Reconnect hoses to flow control valve.

ATTACHMENTS

WHEELS AND TIRES

Drop center wheels with recapped truck tires or implement tires are available.

Tire Size	Wheel Size	Tire Pressure
16.5 x 16.1 Implement	14.00 x 16.1	48 PSI
11 R 22.5	22.5 x 8.25	75 PSI
385/65 R 22.5	22.5 x 11.75	115 PSI
550/60 – 22.5 Implement	22.5 x 16	40 PSI
425/65 R 22.5 Truck Tires	22.5 x 13	115 PSI



ENDGATE

The endgate closes off the back end of the spreader to contain manure with high liquid content.

The endgate also prevents solid material from being piled tight against the beater.



LUBRICATING AND MAINTAINING SPREADER SAFELY

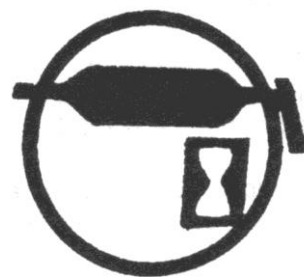
CAUTION: Help prevent personal injury caused by unexpected movement of the machine. If spreader is connected to tractor, disengage PTO, engage parking brake and/or place transmission in "PARK", shut off engine, and remove key. If spreader is detached, block wheels and use safety stands.

Replace all shields after lubricating or servicing.

OBSERVING INTERVALS

IMPORTANT: The intervals recommended are based on normal conditions. Severe or unusual conditions may require more frequent attention.

Perform each lubrication and maintenance item illustrated in this section.

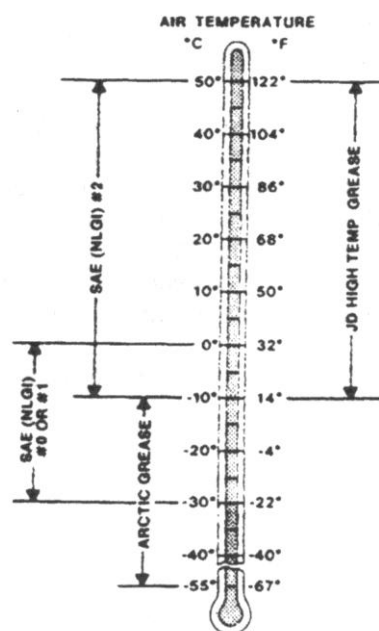


SELECTING GREASE

Depending upon the expected air temperature range during the service interval, use grease as shown on the adjusting temperature chart.

-SAE-Multipurpose High Temperature Grease with Extreme Pressure [EP] Performance with 3 to 5% molybdenum disulfide, lithium based

NOTE: Moly-type grease is recommended, however, if not available, multipurpose grease is acceptable.



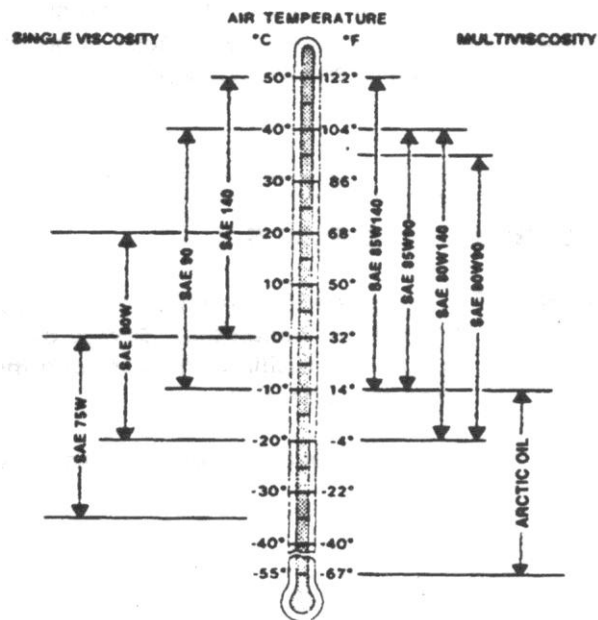
LUBRICATION & MAINTENANCE

SELECTING GEAR CASE OIL

Depending upon the expected air temperature range during the drain interval, use oil viscosity shown on the adjoining temperature chart.

- API Service Classification GL-5
- Military Specification MIL-L-2105B
- Military Specification MIL-L-2105C

At temperatures below -35° [-31°], use arctic oils such as those meeting Military Specifications MIL-G-10324A.



X8322 -19-30SEP88

SERVICE INTERVALS

EVERY 8 HOURS

- Lubricate driveline
- Lubricate top beater bearings
- Check gear case oil level
- Check tires

EVERY 50 HOURS

- Tighten wheel hardware
- Lubricate walking beam pivots

EVERY 250 HOURS

- Repack wheel bearings
- Lubricate endgate pivots

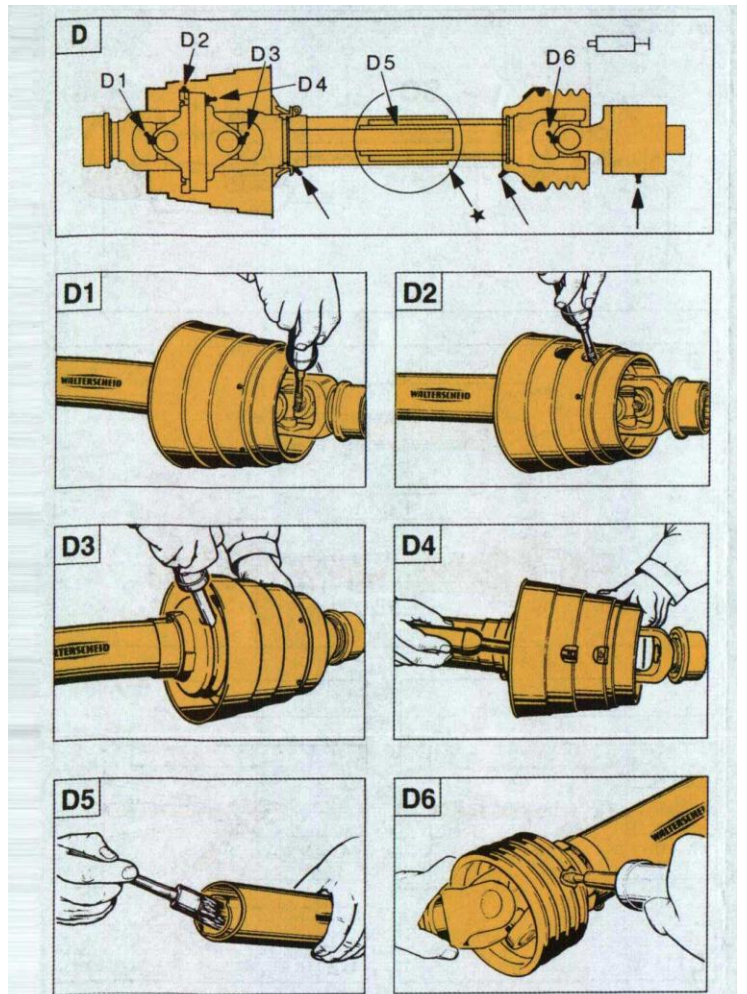
SERVICE AS REQUIRED

- Slip the clutch
- Adjust sliding floor/moving panel seals

In addition to the above referenced information, you are working with a central lube CV design on the primary that contains a special lubrication provision that needs to be well defined for the user so that extended life on the CV can be achieved.

The key point is that each CV has one zerk in a bearing cap and it is this zerk that is most important since it feeds the inboard cross kit as well as the the ball and socket of the CV. The user needs to understand that the zerk in the cap should receive **15-20 pumps** of grease each day.

The other zerks in the joint, CV housing and telescoping members can operate with 5-6 pumps or until the seals purge. The plastic zerks feeding the shielding should also receive 3-4 pumps daily if shields are being restrained.



Primary Driveline (to Tractor) Lubricate fittings D1 through D6 every eight hours of operation.
Secondary Driveline (under spreader) Lubricate as above including overrunning clutch.

NOTE: Lubrication step D5 is only necessary when driveline does not have grease fitting. Separate front and rear halves of driveline and brush with grease.

CAUTION: DO NOT WELD, CUT OR CHANGE THE LOCATION OF BEATER KNIVES AND CLAWS. THIS CAN RESULT IN UNBALANCED ROTORS, CAUSING PREMATURE WEAR OR FAILURE OF COMPONENTS ON SPREADER!

CHECK GEAR CASE OIL LEVEL

With spreader on level ground, check oil level at the sight glass on the center gear case."A"

Add recommended oil as needed. (See Selecting Gear Case Oil.) To add oil, remove fill cap at the top of the gear case "B"

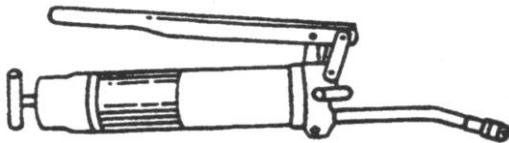
B

A



GREASE TOP BEATER BEARINGS

Grease the two bearings at the top of the vertical beaters every 8 hours of operation.



CHECKING TIRES

1. Check tires daily for damage or noticeably low pressure.
2. Repair any cuts or breaks as soon as possible.
3. Protect tires from exposure to sunlight and petroleum products or chemicals.

Tire Size	Wheel Size	Tire Pressure
700/40-22.5 treaded	22.5 x 16	65 PSI



LUBRICATE WALKING BEAM PIVOTS

1. Place a jack under the spreader main frame.
2. Raise spreader enough to relieve weight from walking beam.
3. Lubricate grease fitting (A) with Moly High Temperature/Extreme Pressure Grease.

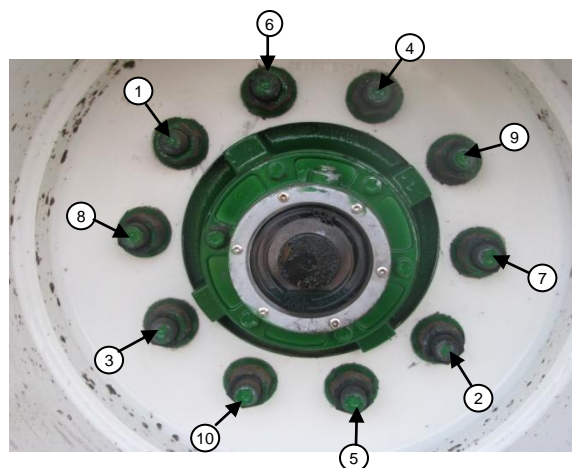


TIGHTENING WHEEL HARDWARE

IMPORTANT:

Operating the spreader with loose wheel hardware will damage the hub or wheel. Tighten hardware after initial transport, after one hour of operation, and every fifty hours thereafter.

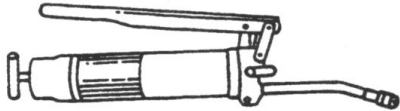
Tighten to 475 lb.-ft. in the sequence shown.



LUBRICATION & MAINTENANCE

LUBRICATE THREE PILLOW BLOCKS UNDER THE SPREADER THAT CARRY MAIN POWER SHAFT

Lubricate grease fitting (A) with Moly High Temperature/Extreme Pressure Grease.



LUBRICATION & MAINTENANCE

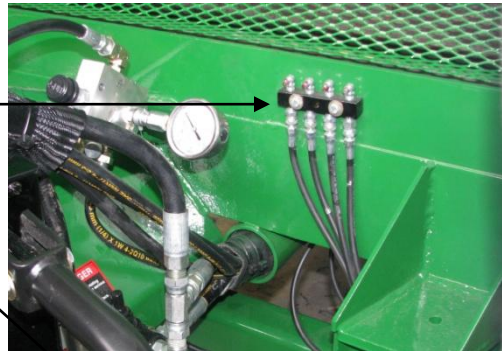
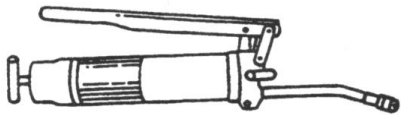
CHECK OIL LEVEL IN HUBS.

See sight glass in hub for proper oil level.



LUBRICATE THE SIX PILLOW BLOCKS UNDER THE SPREADER THAT CARRY THE MAIN POWER SHAFT, USING CENTRAL GREASE LOCATION

1. Lubricate grease fitting (A) with Moly High Temperature/Extreme Pressure Grease.



LUBRICATE WALKING BEAMS USING GREASE BANKS ATTACHED TO THE REAR OF THE FENDERS, TWO ON EACH SIDE.



LUBRICATE HITCH EVERY 40 HRS.



MAINTAINING SLIP CLUTCH, WALTERSCHEID

The clutch is preset and is not field adjustable.

If you determine that your slip clutch needs maintenance or adjustment, contact your dealer.



ADJUST SLIDING FLOOR/MOVING PANEL SEALS

The rubber seals on the moving panel and sliding floor are adjustable.

Properly adjusted seals will minimize leakage and ensure a clean wiping action on the sides and floor.

Inspect, adjust, or replace seals as necessary.



SPECIFICATIONS

MODEL HR880

Tractor Size (Minimum recommended)	200 hp PTO
Weight Spreader, Complete with Implement tires and all Attachments	17040 lb
Load Capacity	48400 lb
Volume Capacity Struck Level Heaped Load	712 cu. ft. 1096 cu. ft.
Beater Speed	420 rpm
Unloading Speed	0-16 ft/min Infinitely Variable
Driveline	Shielded 1000 rpm
Attachments	Endgate

(Specifications and design subject to change without notice)

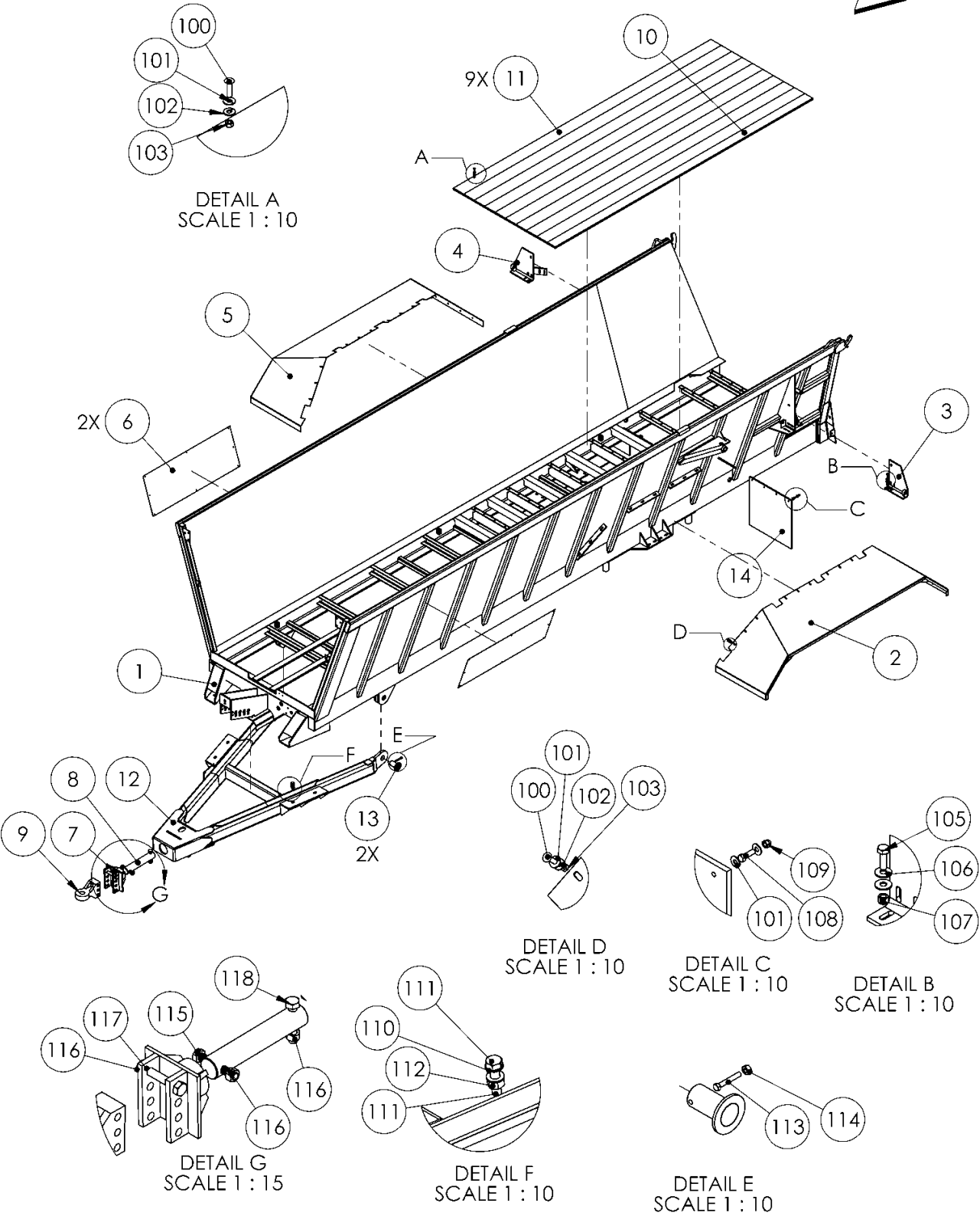
PARTS MANUAL

7519-01-01 Main Frame, Hitch, & Floor

Ref	Part No.	Description	Parts	Will Fit SN	Remarks
1	PR80010	Main Frame, HR880	1		
2	PR60022	Fender, LH	1		
3	PR80079	Fender, RH, HR880	1		
4	PR60023	Bracket, LH, End Gate Mount	1		
5	PR60024	Bracket, RH, End Gate Mount	1		
6	PR60043	Decal Plate, Angled, Side	2		
7	PR80007	Load Cell Mount, Hitch Area, 1880 VB	1		
8	PR63101	Hitch Shaft, Hardened, Long	1		
9	TH-0002	Bull-Pull Articulating Hitch, 3-Bolt	1		
10	PR80009	Floor, End	1		
11	PR80019	Floor, Mid, Tongue and Groove	9		
12	PR80016	Tongue, HR880	1		
13	PR60025	Tongue Pin	2		
14	MF-9307	24' X 24' Mudflaps, w/ Name (pc)	2		
100	BL-6-150-C	3/8-16 X 1-1/2 CARRIAGE BOLT G5 ZC	94		
101	BL-6-SW	3/8 SAE FW ZC	110		
102	BL-6-LW	3/8 SPLIT LW ZC	94		
103	BL-6-N	3/8-16 HEX NUT ZC	94		
105	BL-8-175-H8	1/2 X 1-3/4 HH G8	10		
106	BL-8-FW	1/2 USS FW ZC	20		
107	BL-8-LN	1/2-13 LN NYLON INSERT ZC	10		
108	BL-6-125-H	3/8-16 X 1-1/4 HHCS G5 ZC	8		
109	BL-6-N-A	3/8-16 ACORN NUT, HEX, Ni-PL STEEL	8		
110	BL-12-FW-8	3/4 FW G8	8		
111	BL-12-300-H8	3/4-10 x 3 HH C/S G8 ZC	4		
112	BL-12-LN-8	3/4-10 LN w/ NYLON INSERTS G8	4		
113	BL-6-250-H	3/8-16 X 2-1/2 HH C/S G5 ZC	2		
114	BL-6-LN	3/8-16 FIN H LN NE A563 GA ZC	2		
115	BL-16-600-H8	1-8 X 6 BOLT HH C/S G8 ZC	1		
116	BL-16-LN-8	1 H LN ZC G8	3		

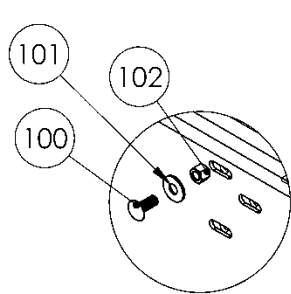
117	BL-16-800-8	1-8 X 8 HH C/S G8 ZC	1
118	BL-16-550-H8	1-8 X 5-1/2 BOLT HH C/S G8 ZC	1

7519-01-01

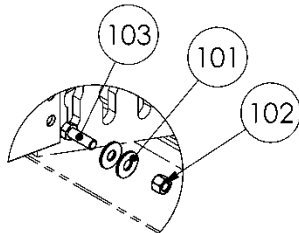
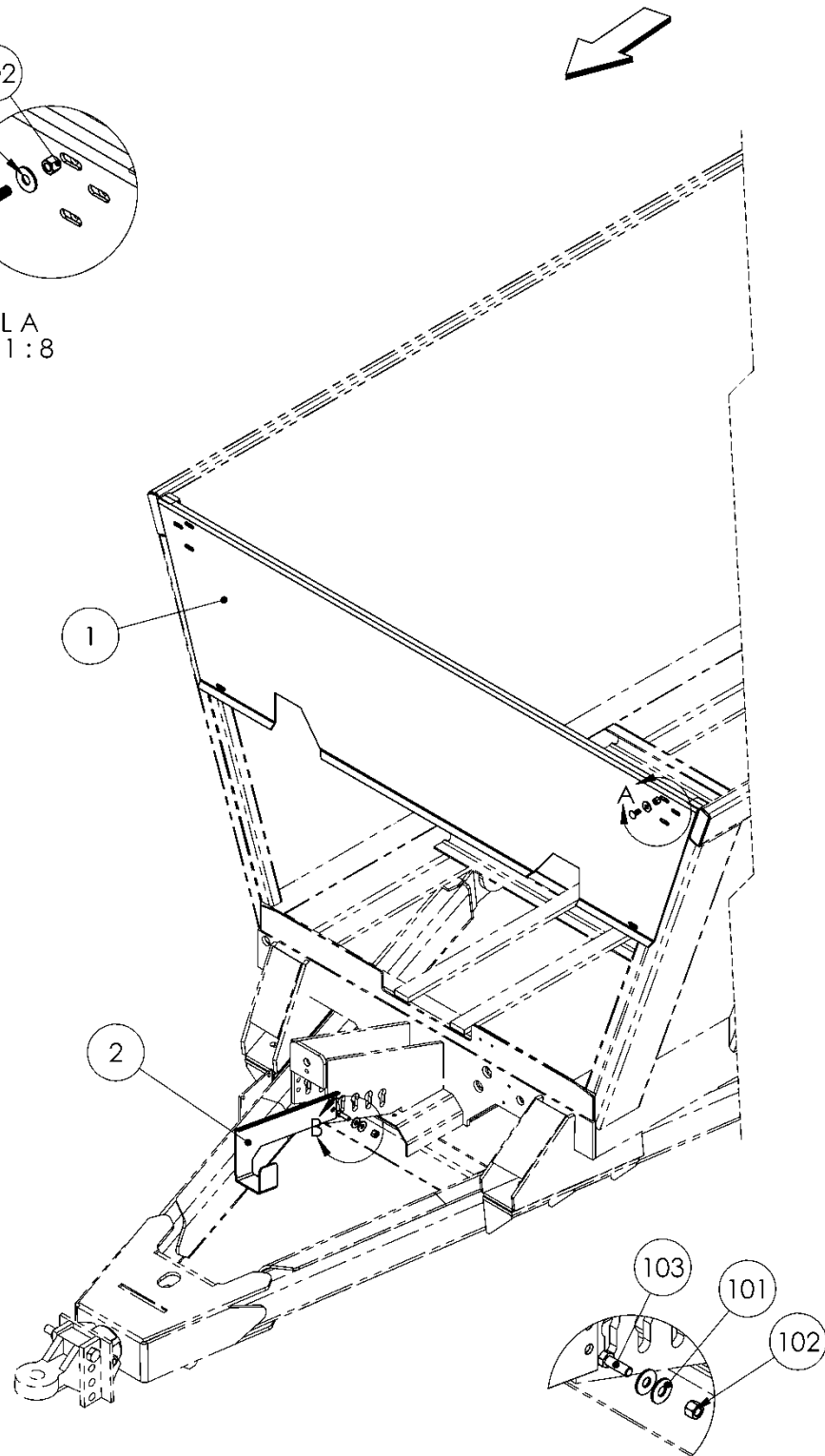


7519-01-02 *Front Shields*

<i>Ref</i>	<i>Part No.</i>	<i>Description</i>	<i>Parts –</i>	<i>Will Fit SN</i>	<i>Remarks</i>
1	PR80203	Front Panel, HR880	1		
2	PR80202	PTO Holder, HR880	1		
100	BL-8-125-C	1/2 UNC X 1 1/4 CARRIAGE BOLT GR5 ZINC	8		
101	BL-8-FW	1/2 USS FW ZC	12		
102	BL-8-LN	1/2-13 LN NYLON INSERT ZC	10		
103	BL-8-150-H	1/2-13 X 1-1/2 HH C/S BOLT G5 ZC	2		



DETAIL A
SCALE 1 : 8

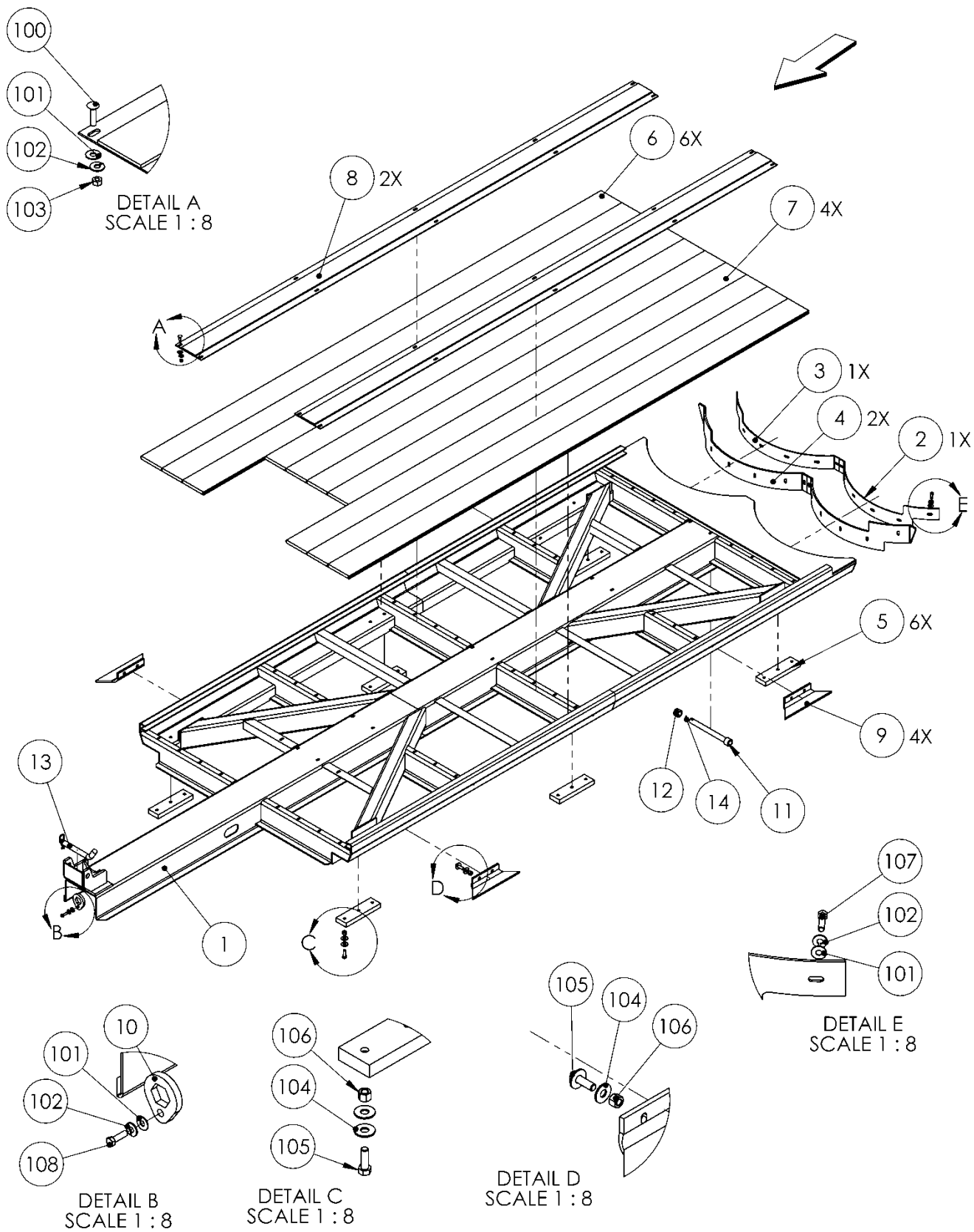


DETAIL B
SCALE 1 : 8

7519-01-03 *Sliding Floor*

<i>Ref</i>	<i>Part No.</i>	<i>Description</i>	<i>Parts –</i>	<i>Will Fit SN</i>	<i>Remarks</i>
1	PR80108	Sliding Floor, HR880	1		
2	PR80040	Scraper, RH, sliding floor	1		
3	PR80041	Scraper, LH, Sliding floor, 1880	1		
4	PR80042	Belting Scraper, sliding floor, 1880	2		
5	PR80104	Spacer Slider Block	6		
6	PR80031	Floor, Sliding Floor, 75018001-	6	75018001-	
7	PR80036	Floor, Sliding Floor, Short	4		
8	PR80107	Pusher Runner Weldment, HR880	2		
9	PR80109	Channel Scraper, Sliding Floor	4		
10	PR80101	Main Cylinder Stop	1		
11	PR80102	Cylinder Pin, Main Cylinder, Sliding Floor	1		
12	PR80103	Cylinder Pin	1		
13	PR80404	1' Clevis Pin, 6.75' Usable	1		
14	PIN-3-20	Roll Pin 3/16 x 1-1/4 Stainless Steel	1		
100	BL-6-150-C	3/8-16 X 1-1/2 CARRIAGE BOLT G5 ZC	46		
101	BL-6-SW	3/8 SAE FW ZC	59		
102	BL-6-LW	3/8 SPLIT LW ZC	59		
103	BL-6-N	3/8-16 HEX NUT ZC	46		
104	BL-8-FW	1/2 USS FW ZC	40		
105	BL-8-150-H	1/2-13 X 1-1/2 HH C/S BOLT G5 ZC	20		
106	BL-8-LN	1/2-13 LN NYLON INSERT ZC	20		
107	BL-6-150-SS	3/8-16 X 1-1/2 HEX CAP SS	12		
108	BL-6-125-H	3/8-16 X 1-1/4 HHCS G5 ZC	1		

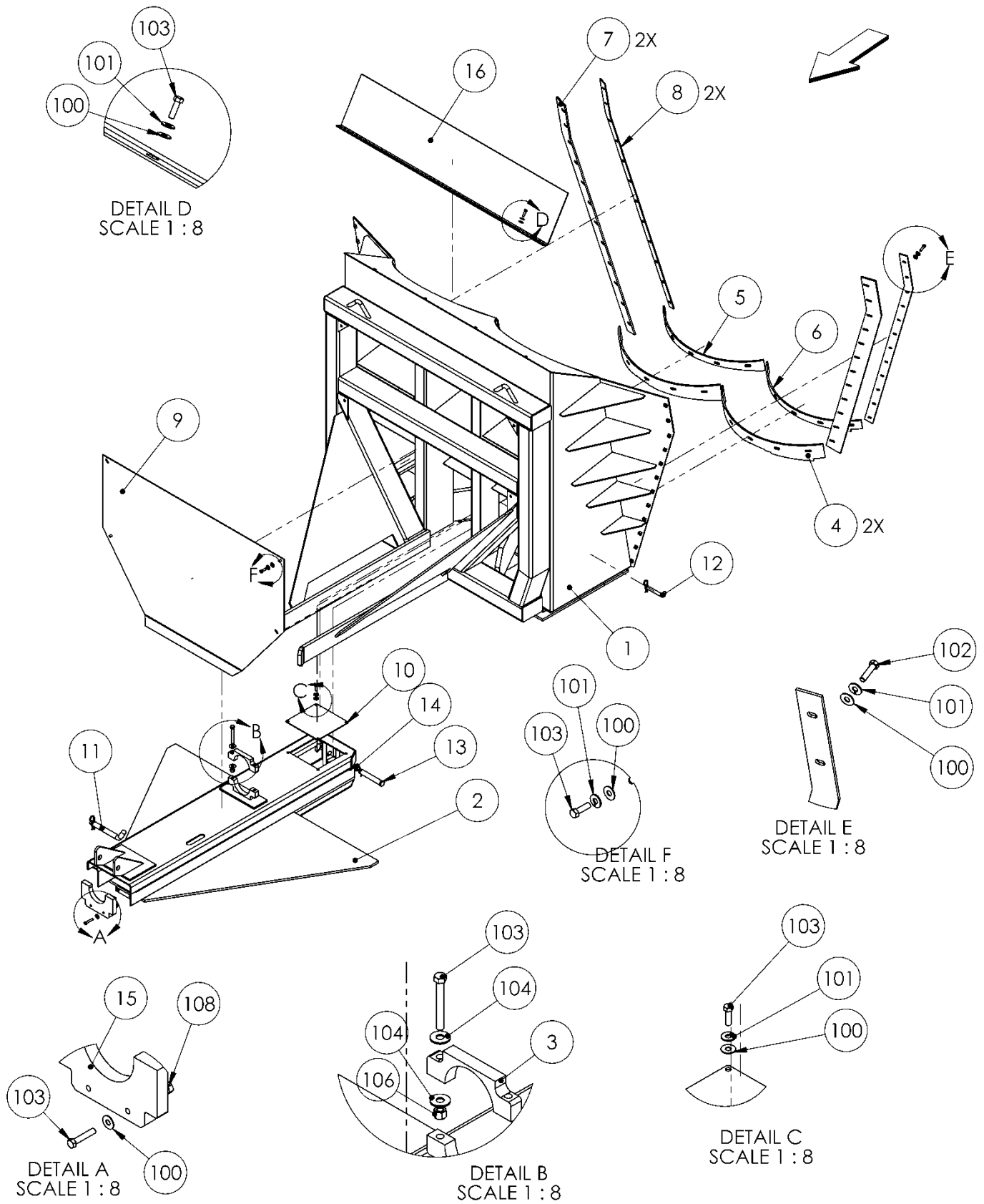
7519-01-03



7519-01-04 Pusher

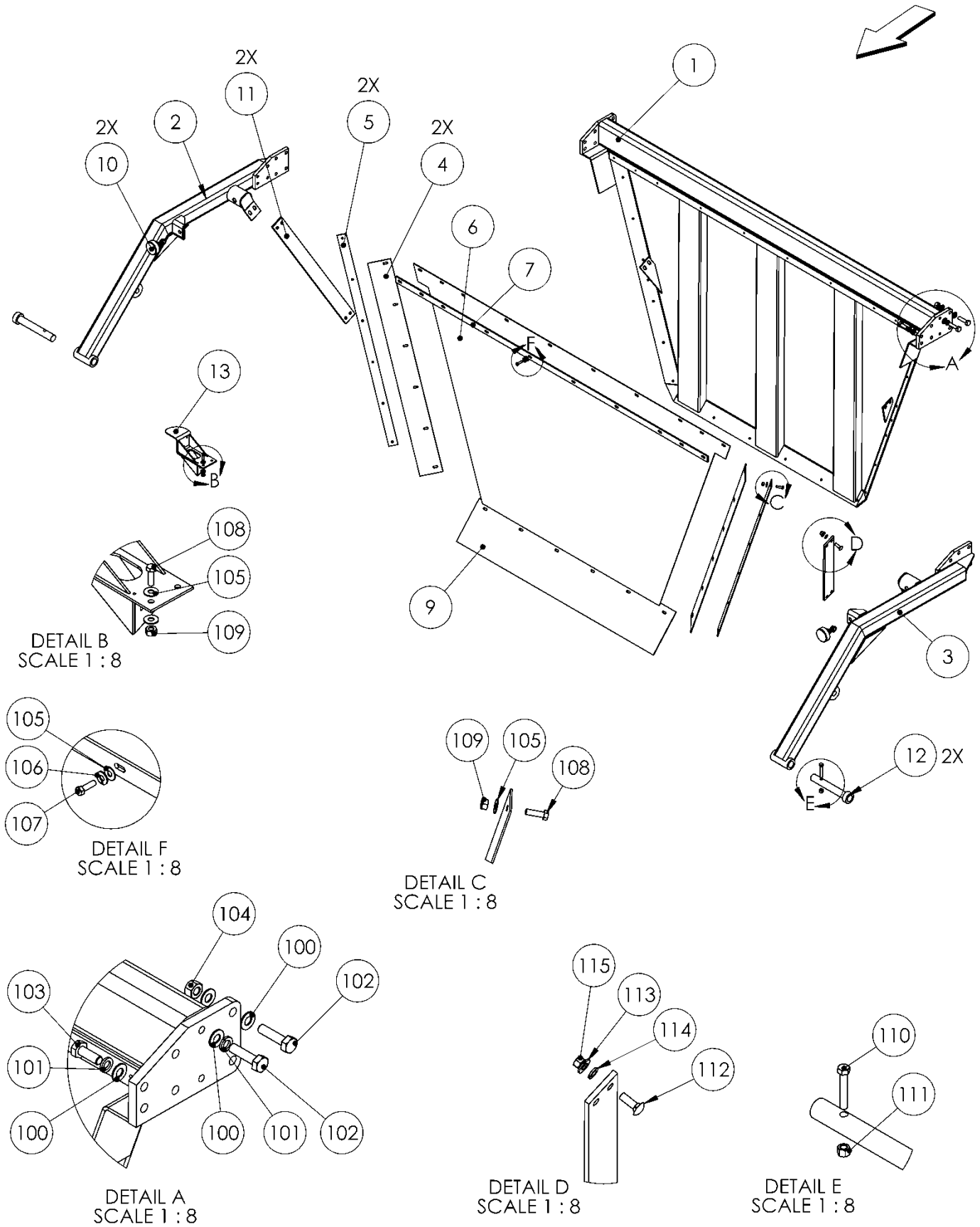
Ref	Part No.	Description	Parts	Will Fit SN	Remarks
1	PR80033	Pusher, 2nd Stage, HR880	0	75019001	
1	PR80043	Pusher, HR880	1	75019002-	
2	PR80044	First Sliding Section, HR880	1	75019002-	
2	PR80034	Pusher, 1st Stage, HR880	0	75019001	
3	PR80021-F	Plate Steel	1		
4	PR80022	Scraper, Pusher	2		
5	PR80023	Backing Bar, Pusher, LH	1		
6	PR80024	Backing Bar, Pusher, RH	1		
7	PR80037	Side Belting, HR880 Pusher	2		
8	PR80038	Side Backing Bar, HR880	2		
9	PR80029	Panel, Pusher, 1880 Push	1		
10	PR80035	Acess Cover, HR880 Pusher	0	75019001	
10	PR80046	Acess Cover, Pusher HR880	1	75019002-	
11	PR80404	1' Clevis Pin, 6.75' Usable	1		
12	PR80405	5/8' SS Clevis Pin, 4' Usable	1		
13	PR80403	1' Pin, 5.6875' Usable	1		
14	HC-1130B	Hairpin, 7/8'-1' Rod Dia Range	1		
15	PR80111	Cylinder Sliding Support	1		
16	PR80039	Pusher Extension, HR880	1		
100	BL-6-SW	3/8 SAE FW ZC	50		
101	BL-6-LW	3/8 SPLIT LW ZC	46		
102	BL-6-150-SS	3/8-16 X 1-1/2 HEX CAP SS	34		
103	BL-6-125-H	3/8-16 X 1-1/4 HHCS G5 ZC	12		
104	BL-8-FW	1/2 USS FW ZC	4		
105	BL-8-400-H	1/2-13 X 4 HEX CAP G5 ZC	2		
106	BL-8-LN	1/2-13 LN NYLON INSERT ZC	2		
107	BL-6-200-H	3/8-16 X 2 HEX CAP G5 ZC	2		
108	BL-6-LN	3/8-16 FIN H LN NE A563 GA ZC	2		

7519-01-04



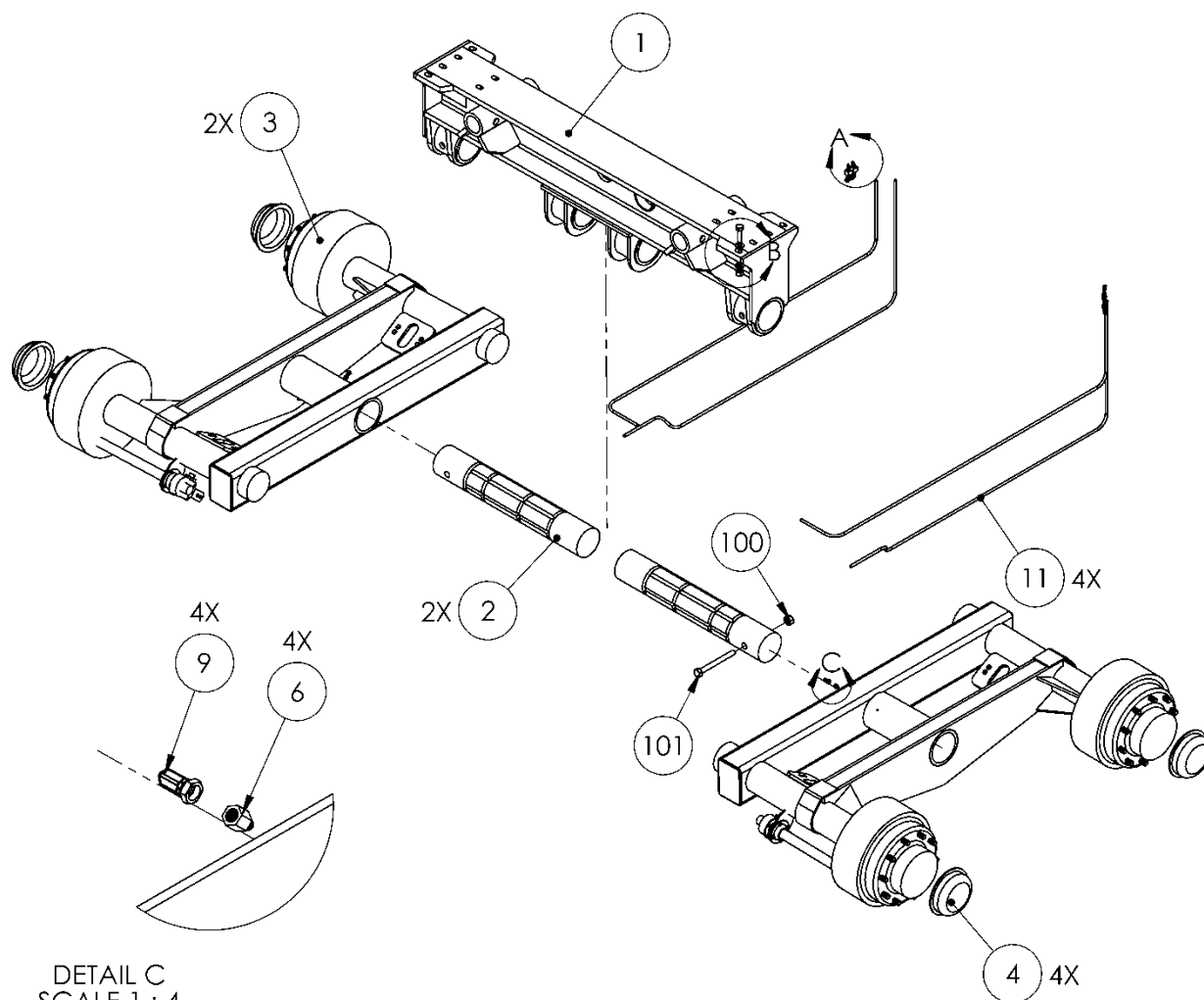
7519-01-05 *Endgate*

<i>Ref</i>	<i>Part No.</i>	<i>Description</i>	<i>Parts</i>	<i>Will Fit SN</i>	<i>Remarks</i>
1	PR60085	Endgate	1		
2	PR60082	Endgate Arm, LH	1		
3	PR60083	Endgate Arm, RH	1		
4	PR60050	Belting, End Gate	2		
5	PR60051	Backing Bar, End Gate	2		
6	PR60086	Belting, Endgate Flap	1		
7	PR60012	Flat Bar, Backing, End Gate Flap	1		
8	PR60087	Belting Bar, Endgate Bottom	1		
9	PR60088	Belting, Endgate Bottom	1		
10	STP-0020	Swivel Leveling Mount, Standoff. 2500lbs.	2		
11	PR60084	Bar, Endgate Brace	2		
12	PR60015	End Gate Pin	2		
13	pr60081	Sequence Valve Mounting Bracket	1		
100	BL-10-SW-8	5/8 SAE FW G8	22		
101	BL-10-LW	5/8 SPLIT LW ZC	10		
102	BL-10-250-H-8	5/8-11 X 2-1/2 HH G8 ZC	10		
103	BL-10-175-H8	5/8-11 X 1-3/4 HH G8 ZC	6		
104	BL-10-LN	5/8-11 HEX LN NE ZC	6		
105	BL-6-SW	3/8 SAE FW ZC	36		
106	BL-6-LW	3/8 SPLIT LW ZC	10		
107	BL-6-100-H	3/8-16 X 1 HH C/S BOLT G5 ZC	10		
108	BL-6-125-H	3/8-16 X 1-1/4 HHCS G5 ZC	18		
109	BL-6-LN	3/8-16 FIN H LN NE A563 GA ZC	16		
110	BL-8-300-H	1/2-13 X 3 HH C/S G5 ZC	2		
111	BL-8-LN	1/2-13 LN NYLON INSERT ZC	2		
112	BL-8-150-C	1/2-13 X 1-1/2 CARRIAGE BOLT G5 ZC	8		
113	BL-8-FW	1/2 USS FW ZC	8		
114	BL-8-LW	1/2 SPLIT LW ZC	8		
115	BL-8-N	1/2-13 HEX FIN NUTS ZC	8		

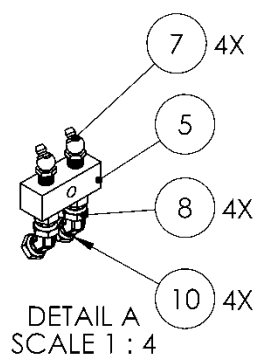


7519-01-06 Axle & Walking Beam, WS Compatible

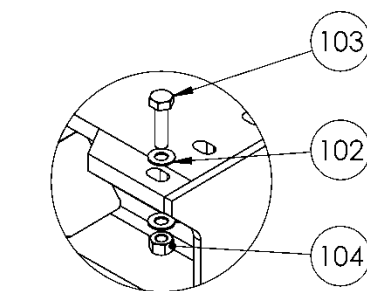
Ref	Part No.	Description	Parts	Will Fit SN	Remarks
1	PR80001	Axle Frame	1		
2	PR60003	Shaft, Walking Beam Pivot	2		
3	PR80004	Rocker, Walking Beam	2		
4	TRL-2750-2	Dust Cover, For 27,000lb Axles	4		
5	GF-2-2	2' Grease Manifold	2		
6	GFA-51942	1/4"-28 Straight Adapter	4		
7	GF-1827-45	Grease Fitting 1/8 NPT 45-	4		
8	A-1404-2-2	1/8 MP x 1/8 FPX	4		
9	A-1501-2-2	1/8' MP x 1/8' FPX90-	4		
10	A-1503-2-2	1/8' MP x 1/8' FPX 45-	4		
11	H2-76-2MP-2MP	1/8 in grease hose 1/8MP x 1/8MP x 76 in long	4		
100	BL-12-LN-8	3/4-10 LN w/ NYLON INSERTS G8	1		
101	BL-12-750-H8	3/4-10 X 7-1/2 HH G8	1		
102	BL-10-SW-8	5/8 SAE FW G8	24		
103	BL-10-250-H-8	5/8-11 X 2-1/2 HH G8 ZC	12		
104	BL-10-LN	5/8-11 HEX LN NE ZC	12		
800	TRL-2750-1-02	Assy Hub 10 Stud 285.75mm	1		Special Order Only
801	TRL-2750-1-03	Inner Bearing Cup	1		Special Order Only
802	TRL-2750-1-04	Outer Bearing Cup	1		Special Order Only
803	TRL-2750-1-05	Stud, Press-in M22 x 1.5	10		Special Order Only
804	TRL-2750-1-06	Drum, 16 1/2" x 7"	1		Special Order Only
805	TRL-2750-1-07	Swivel Flange Nut	10		Special Order Only
806	TRL-2750-1-08	Gasket, Oil Cap	1		Special Order Only
807	TRL-2750-1-09	Oil Cap (with Vent Plug)	1		Special Order Only
808	TRL-2750-1-10	Lockwasher, Oil Cap	6		Special Order Only
809	TRL-2750-1-11	Cap Screw, Oil Cap	6		Special Order Only
810	TRL-2750-4	2 Piece Flange Nut, Wheel Stud	40		Special Order Only



DETAIL C
SCALE 1 : 4



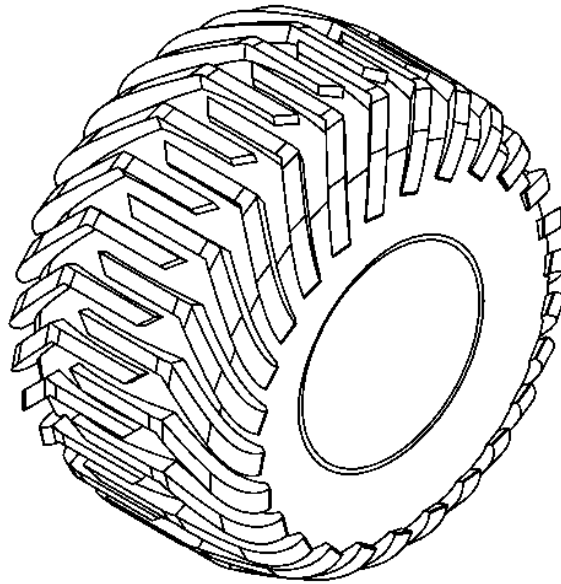
DETAIL A
SCALE 1 : 4



DETAIL B
SCALE 1 : 8

7519-01-07 *Wheels & Tires*

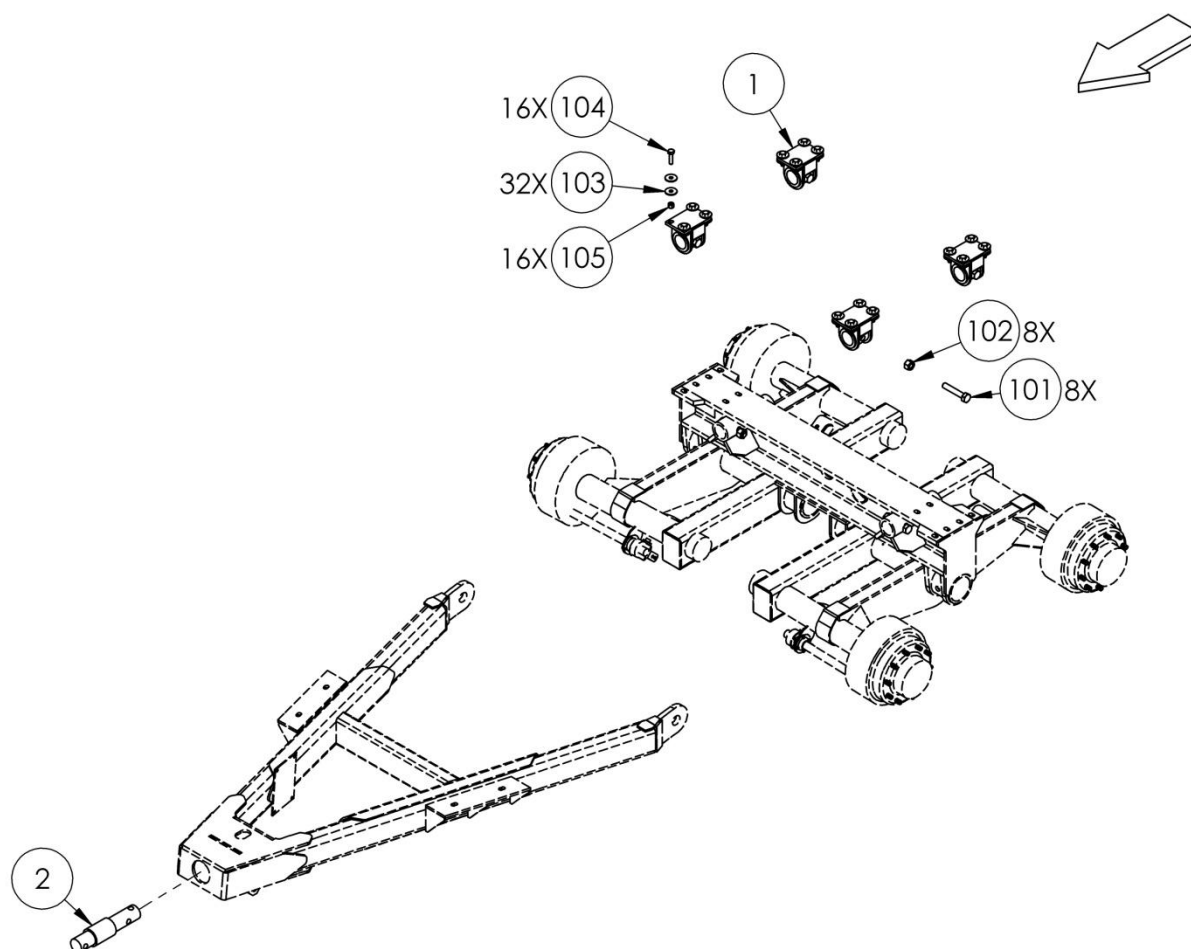
<i>Ref</i>	<i>Part No.</i>	<i>Description</i>	<i>Parts</i>	<i>Will Fit SN</i>	<i>Remarks</i>
1	WHM-2000	700/40-22.5 Mounted Assembly	4		
801	WHL-2000	10 X 285.75mm Bolt 24 x 22.5	1		
802	WHT-2000	710/40-22.5 328 Tread 18 Ply	1		



7519-01-08 *Optional - Weight Scale Assembly, 5 Point System*

<i>Ref</i>	<i>Part No.</i>	<i>Description</i>	<i>Parts</i>	<i>Will Fit SN</i>	<i>Remarks</i>
1	PR80003	Mount, Load Cell, 1880VB	4		
2	PR80008	Shaft, Removable Hitch, 1880 VB	-1		
3	SWS-4605	Spreader Weighing system, 5 point Scale system with GT400	1		
4	SWS-403769	Indicator Mount, GT400, Bracket - STR Top Mount	1		
5	SWS-403980	Indicator Mount, GT400, Bracket - ROBO Mounting	1		
101	BL-16-550-H8	1-8 X 5-1/2 BOLT HH C/S G8 ZC	8		
102	BL-16-LN-8	1 H LN ZC G8	8		
103	BL-10-FW-8	5/8 FW G8	32		
104	BL-10-250-H-8	5/8-11 X 2-1/2 HH G8 ZC	16		
105	BL-10-LN	5/8-11 HEX LN NE ZC	16		
801	SWS-4605-001	Cell, dia 2.875 DB -21	0		
802	SWS-4605-002	Cell, dia 2.875 DB-21 HT	0		
803	SWS-4605-003	J-Box 6 Pt	0		
804	SWS-4605-004	J Box Cable, 9m	0		
805	SWS-4605-005	Power Cable 4- wire, 3m Cable	0		
806	SWS-4605-006	GT400 Indicator	0		

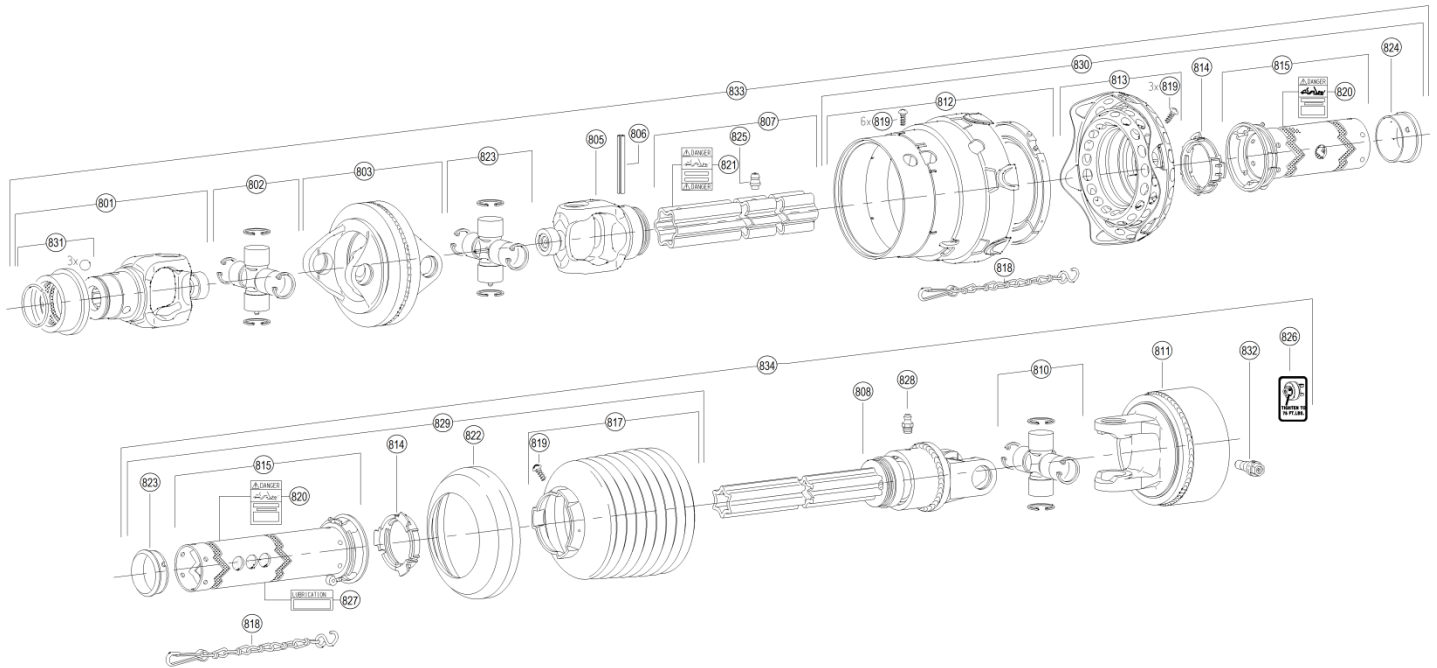
7519-01-08



7519-02-01 1000 RPM Drive Line

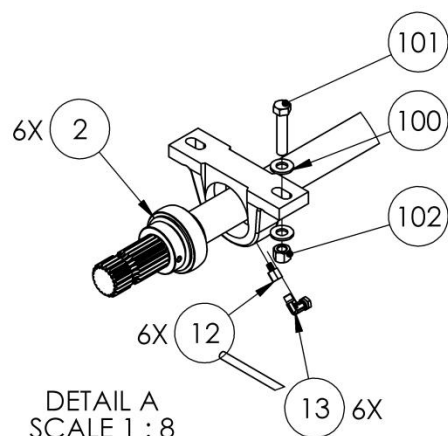
Ref	Part No.	Description	Parts	Will Fit SN	Remarks
1	PTS-1021	Driveline, 1-3/4-20 Spline, PWE580 HD Shaft	1	Replaces PTS-1020	Rev b starts with -74015006
801	PTS-1021A	Yoke, 1-3/4'-20 Spl. ASG	1		Special Order Only
802	PTS-1021B	Cross & Bearing Kit	1		Special Order Only
803	PTS-1005B	Double Yoke	1		Special Order Only
805	PTS-1021C	Inboard Yoke S5	1		Special Order Only
806	PTB-1014C	Spring Pin 10 X 75	1		Special Order Only
807	PTS-1021J	Outer Profile S5GL	1		Special Order Only
810	PTS-4001B	Extended Lube Cross & Bearing Kit	1	Walterscheid Yokes	Special Order Only
811	PTS-1021E	Cut-Out Clutch	1		Special Order Only
812	PTS-1021K	CV Guard & Bearing Assy	1	Replaces PTS-1005K	Special Order Only
813	PTS-1012L	Yoke With Bridge	1		
814	PTS-1002J	PTO Shield Bearing Ring	2		Special Order Only
815	PTS-1021M	Guard Tube Outer	1		Special Order Only
816	PTS-1012N	Flexible Pin	1		
817	PTS-1021F	Guard Cone 9 Rib	1		Special Order Only
818	PTS-1002K	PTO Shield Safety Chain	2		Special Order Only
819	PTS-1010K	Screw	10		Special Order Only
820	PTS-1010L	Decal, Outer	1		Special Order Only
821	PTS-1010M	Decal, Inner	1		Special Order Only
822	PTS-8100D	Reinforcing Collar	1		Special Order Only
823	PTS-1021G	Cross & Bearing Kit	1		Special Order Only
824	PTS-1021H	Support Bearing	1		Special Order Only
825	PTB-1014L	Zerk	1		Special Order Only
826	PTS-1009J	Decal	1		Special Order Only
827	PTS-1021P	Lubrication Decal	1	Replaces PTS-1008Q	Special Order Only
828	PTS-1008C	Zerk, Double Yoke	1		Special Order Only
829	PTS-1021RS	Outer Guard Kit	0		Special Order Only
830	PTS-1021FS	Inner Guard Kit	0		Special Order Only

831	PTS-1008R	ASG Collar Kit	1	Special Order Only
832	PTS-1009K	CC Lock Assembly	1	Special Order Only
833	PTS-1021FH	Front Half Shaft, PTS-1021	1	Special Order Only
834	PTS-1021RH	Rear Half Shaft, PTS-1021	1	Special Order Only



7519-02-02 Main Drive Shaft

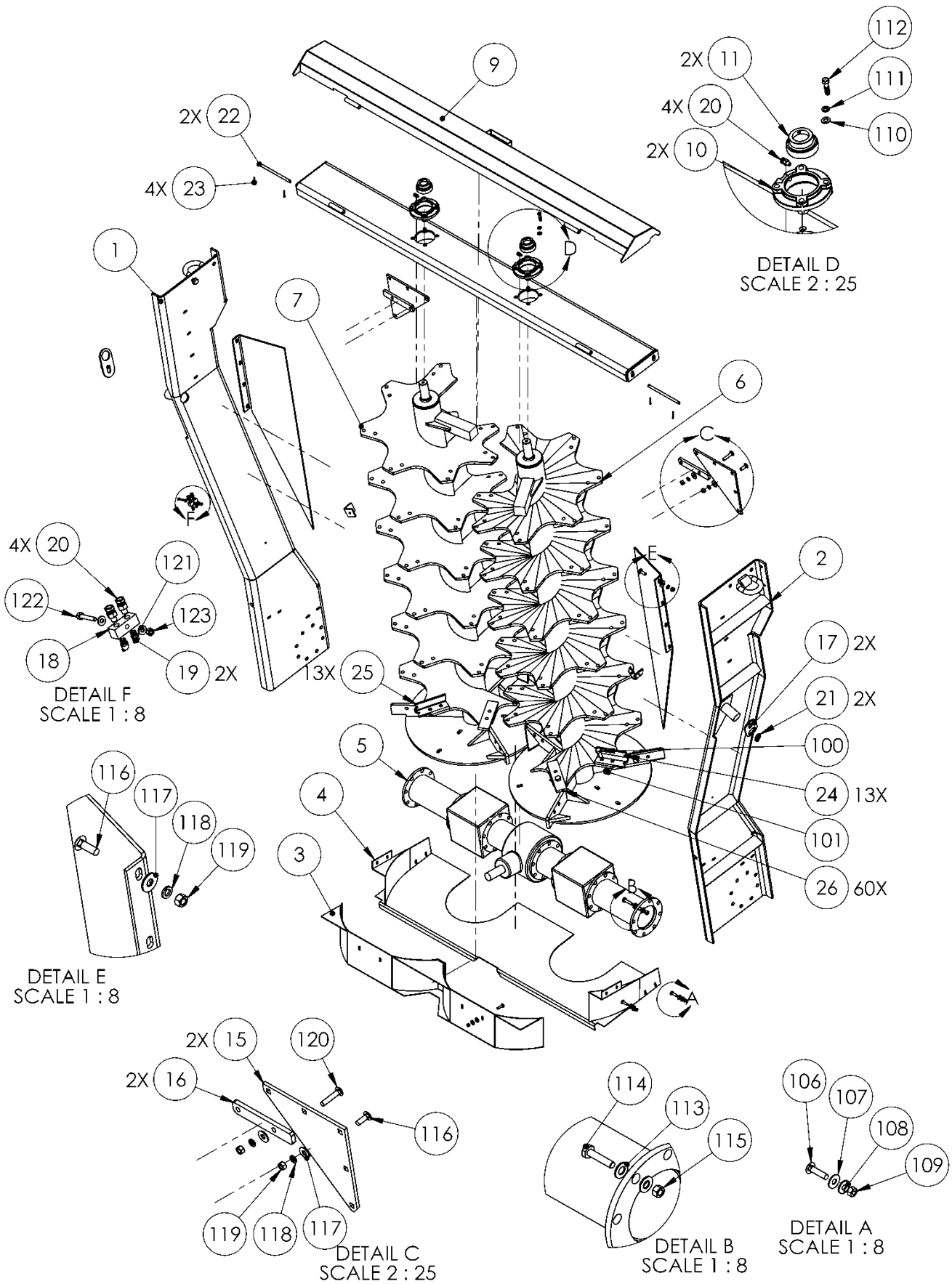
Ref	Part No.	Description	Parts	Will Fit SN	Remarks
1	BR-085-RAK	Bearing Housing 85 mm	6		
2	BR-175-085-I	Bearing, 1 1/2" ID, TS	6		
3	PTS-1018	Yoke Assembly 1-3/4-20 1Slip,1 Lock	1		
4	PTS-1019	Yoke Assembly, 1-3/4-20,1-3/4-6 Both Lock	1		
5	PR60405	Rear Drive Shaft, HR880	1		
6	PR80017	Main Drive Shaft, HR880, 130.437'	2		
7	PR60404	Coupler, 1.75 x 20 Spline, 12/24 Pitch, P.A. 30-	1		
8	PIN-4-36	Roll Pin 1/4" x 2.25"	1		
9	GF-4-4	4' Grease Manifold	2		
10	GF-1827	Grease Fitting 1/8 NPT Straight	6		
11	A-1404-2-2	1/8 MP x 1/8 FPX	6		
12	GFA-51942	1/4"-28 Straight Adapter	6		
13	A-1501-2-2	1/8" MP x 1/8" FPX90-	6		
14	H2-29-2MP-2MP	1/8' Hose 1/8MP x 1/8MP x 29' L	1		
15	H2-70-2MP-2MP	1/8' Hose 1/8MP x 1/8MP x 70' L	1		
16	H2-130-2MP-2MP	1/8' Hose 1/8MP x 1/8MP x 130' L	1		
17	H2-160-2MP-2MP	1/8' Hose 1/8MP x 1/8MP x 160' L	1		
18	H2-110-2MP-2MP	1/8' Hose 1/8MP x 1/8MP x 110' L	1		
19	H2-62-2MP-2MP	1/8' Hose 1/8MP x 1/8MP x 62' L	1		
100	BL-8-FW	1/2 USS FW ZC	2		
101	BL-8-250-H	1/2-13 X 2-1/2 HH C/S G5 ZC	1		
102	BL-8-LN	1/2-13 LN NYLON INSERT ZC	1		
103	BL-4-FW	1/4 USS FW ZC	2		
104	BL-4-LN	1/4-20 HEX LN NE ZC	1		
105	BL-4-150-H	1/4-20 X 1-1/2 HEX CAP G5 ZC	1		



7519-02-03 Vertical Beaters

Ref	Part No.	Description	Parts	Will Fit SN	Remarks
	VTB-1899-A3	Knife	0	1880: - 74015014	
0	HP-1038	Gear Lube, 80W90 @ Quart	11	Hydra Ram Spreader	
1	PR80058	Beater Panel, RH, HR880	1		
2	PR80059	Beater Panel, LH, HR880	1		
3	PR80053	Beater Pan, Main Frame Mounted	1		
4	PR80054	Beater Pan, Vertical Beater Assy	1		
5	VTB-1893-A1	1000 RPM Beater Gearbox	1		
6	VTB-0022	Vertical Beater, LH	1		
7	VTB-0023	Vertical Beater, RH	1		
8	PR63502	Top Bearing Plate, V-Box Spreader	1		
9	PR63506	Top Bearing Cover	1		
10	BR-085-4PF	85mm Four Bolt Piloted Flange Housing	2		
11	BR-175-085-I	Bearing, 1 1/2" ID, TS	2		
12	PR64011	Beater Panel Wing, LH	1		
13	PR64012	Beater Panel Wing, RH	1		
14	PR60058	Tab, Beater Panel Wing	2		
15	PR60059	Top Gusset	2		
16	PR60060	Top Plate Spacer	2		
17	PR63505	Plate, Safety Lock, Remov Beaters	2		
18	GF-2-2	2' Grease Manifold	1		
19	GF-1827-45	Grease Fitting 1/8 NPT 45-	2		
20	A-1404-2-2	1/8 MP x 1/8 FPX	4		
21	PIN-250L	1/4" Lynch Pin	2		
22	PR70133	Hinge Pin, 1/2" x 9'	2		
23	PIN-C3-24	Cotter Pin 3/16 x 1 1/2"	4		
24	VTB-1899-B3	Claw/Blade, Left Beater From Rear	13		
25	VTB-1899-C3	Claw/Blade, Right Beater From Rear	13		
26	VTB-1899-F3	Knife, Weight Specific	60	1190VB: 71113001- 1180VB: 74015011-	

100	BL-10-175-H8	5/8-11 X 1-3/4 HH G8 ZC	164
101	BL-10-LN	5/8-11 HEX LN NE ZC	180
102	BL-10-200-H8	5/8-11 X 2 HEX CAP G8 ZC	12
103	BL-10-SW-8	5/8 SAE FW G8	8
106	BL-6-125-C	3/8-16 X 1-1/4 CARRIAGE BOLT G5 ZC	12
107	BL-6-SW	3/8 SAE FW ZC	12
108	BL-6-LW	3/8 SPLIT LW ZC	12
109	BL-6-N	3/8-16 HEX NUT ZC	12
110	BL-7-SW	7/16 SAE FW ZC	8
111	BL-7-LW	7/16 SPLIT LW ZC	8
112	BL-7-175-HH	7/16-14 X 1-3/4 HH G5 ZC	8
113	BL-9-FW-8	9/16 FW G8	16
114	BL-9-200-H8	9/16-12 X 2 HH G8	8
115	BL-9-LN	9/16-12 LN w/ NYLON INSERT	8
116	BL-8-150-C	1/2-13 X 1-1/2 CARRIAGE BOLT G5 ZC	18
117	BL-8-FW	1/2 USS FW ZC	22
118	BL-8-LW	1/2 SPLIT LW ZC	22
119	BL-8-N	1/2-13 HEX FIN NUTS ZC	22
120	BL-8-250-C	1/2-13 X 2-1/2 CARRIAGE BOLT G5 ZC	4
121	BL-4-FW	1/4 USS FW ZC	2
122	BL-4-150-H	1/4-20 X 1-1/2 HEX CAP G5 ZC	1
123	BL-4-LN	1/4-20 HEX LN NE ZC	1
600	H2-143-2MP-2MP	1/8' Hose 1/8MP x 1/8MP x 143' L	1
601	H2-174-2MP-2MP	1/8' Hose 1/8MP x 1/8MP x 174' L	1

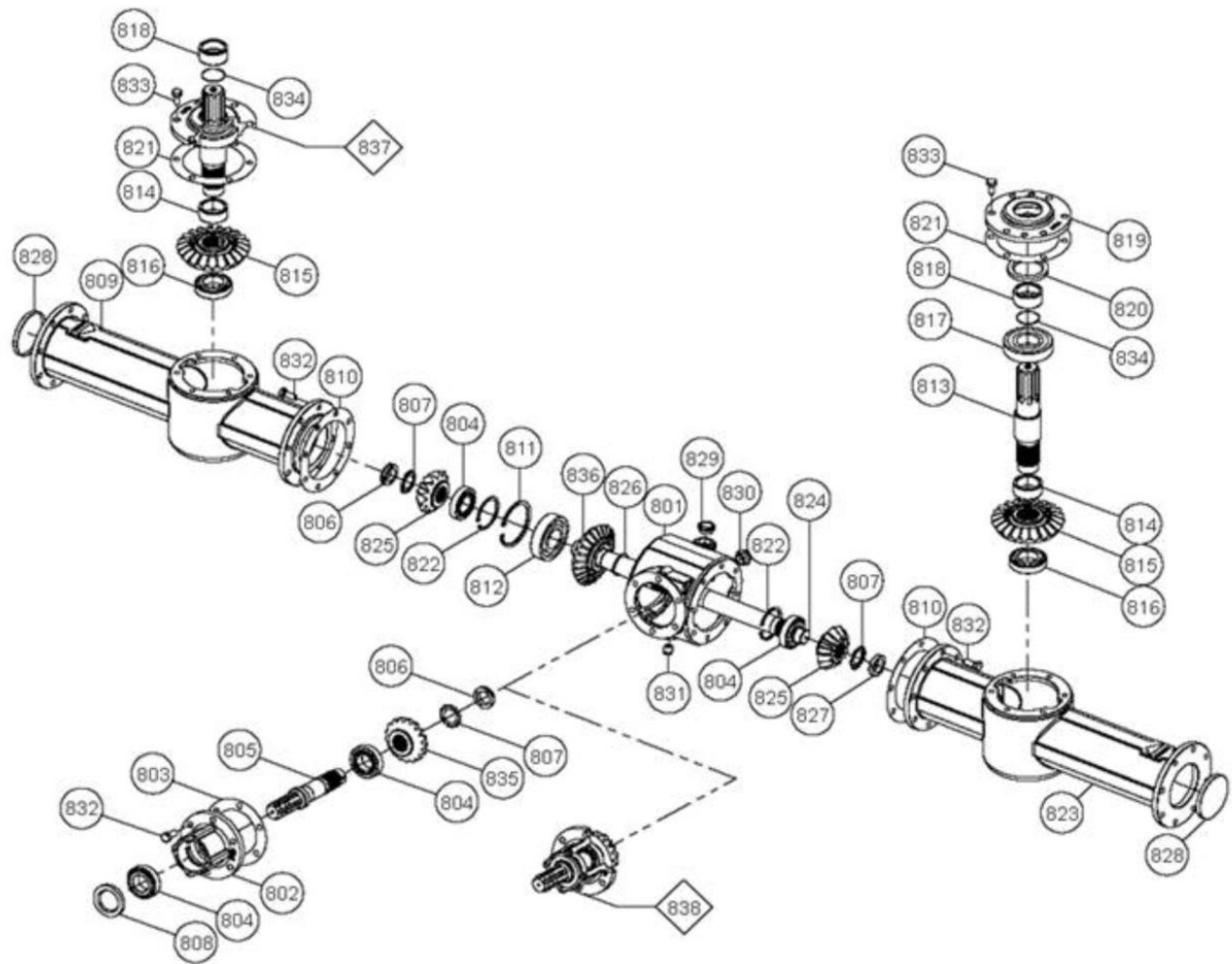


7519-02-03A Reference - Vertical Beater Gearbox

<i>Ref</i>	<i>Part No.</i>	<i>Description</i>	<i>Parts</i>	<i>Will Fit SN</i>	<i>Remarks</i>
1	VTB-1893-A1	1000 RPM Beater Gearbox	1		
801	VTB-1899-A1	Housing	1		Special Order Only
802	VTB-1899-J2	Hub	1		Special Order Only
803	VTB-1899-H2	Gasket	1		Special Order Only
804	VTB-1899-G1	Bearing 32209	4		Special Order Only
805	VTB-1899-L2	Shaft	1		Special Order Only
806	VTB-1899-D1	Threaded Ring, LH Thread	2		Special Order Only
807	VTB-1899-E1	Washer	3		Special Order Only
808	VTB-1899-K2	Oil Seal	1		
809	VTB-1893-B1	Right Spacer Tube	1		Special Order Only
810	VTB-1899-A2	Gasket	2		Special Order Only
811	VTB-1893-C1	Snap Ring	1		Special Order Only
812	VTB-1899-H1	Bearing 6311	1		Special Order Only
813	VTB-1893-D1	Splined Shaft	2		Special Order Only
814	VTB-1899-V1	Spacer	2		Special Order Only
815	VTB-1899-W1	Gear Z=22	2		
816	VTB-1899-X1	Bearing 32210	2		Special Order Only
817	VTB-1899-T1	Bearing 6311-2RS	2		Special Order Only
818	VTB-1899-M1	Spacer	2		Special Order Only
819	VTB-1899-Q1	Calotte	2		Special Order Only
820	VTB-1899-S1	Oil Seal	2		Special Order Only
821	VTB-1899-R1	Gasket	2		Special Order Only
822	VTB-1893-E1	Snap Ring	2		Special Order Only
823	VTB-1893-F1	Right Spacer Tube	1		Special Order Only
824	VTB-1899-C1	Shaft	1		Special Order Only
825	VTB-1899-F1	Bevel Pinion Z=13	2		Special Order Only
826	VTB-1899-K1	Circlip E 55	1		Special Order Only
827	VTB-1899-L1	Threaded Ring, RH Thread	1		Special Order Only
828	VTB-1893-G1	End Cap	2		Special Order Only

829	VTB-1899-E2	Oil Plug, 1' Gas.	1	Special Order Only
830	VTB-1899-c2	Oil Lev. Indicator	1	Same as GBXA-5-ST10B
831	VTB-1899-D2	Oil Plug, 1/2' Gas	1	Special Order Only
832	VTB-1899-Z1	Screw, hex-hd M14X35	22	Reference Only, Special Order
833	VTB-1899-P1	Screw, hex-hd M14X30	12	Reference Only, Special Order
834	VTB-1899-N1	O-ring 2212	2	Special Order Only
835	VTB-1899-G2	Bevel Pinion Z=17	1	
836	VTB-1899-J1	Gear Z=24	1	
837	VTB-1893-H1	Full Cover (complete Callotte)	2	Special Order Only
838	VTB-1899-M2	Hub Complete, Gearbox	1	Special Order Only

7519-02-05A

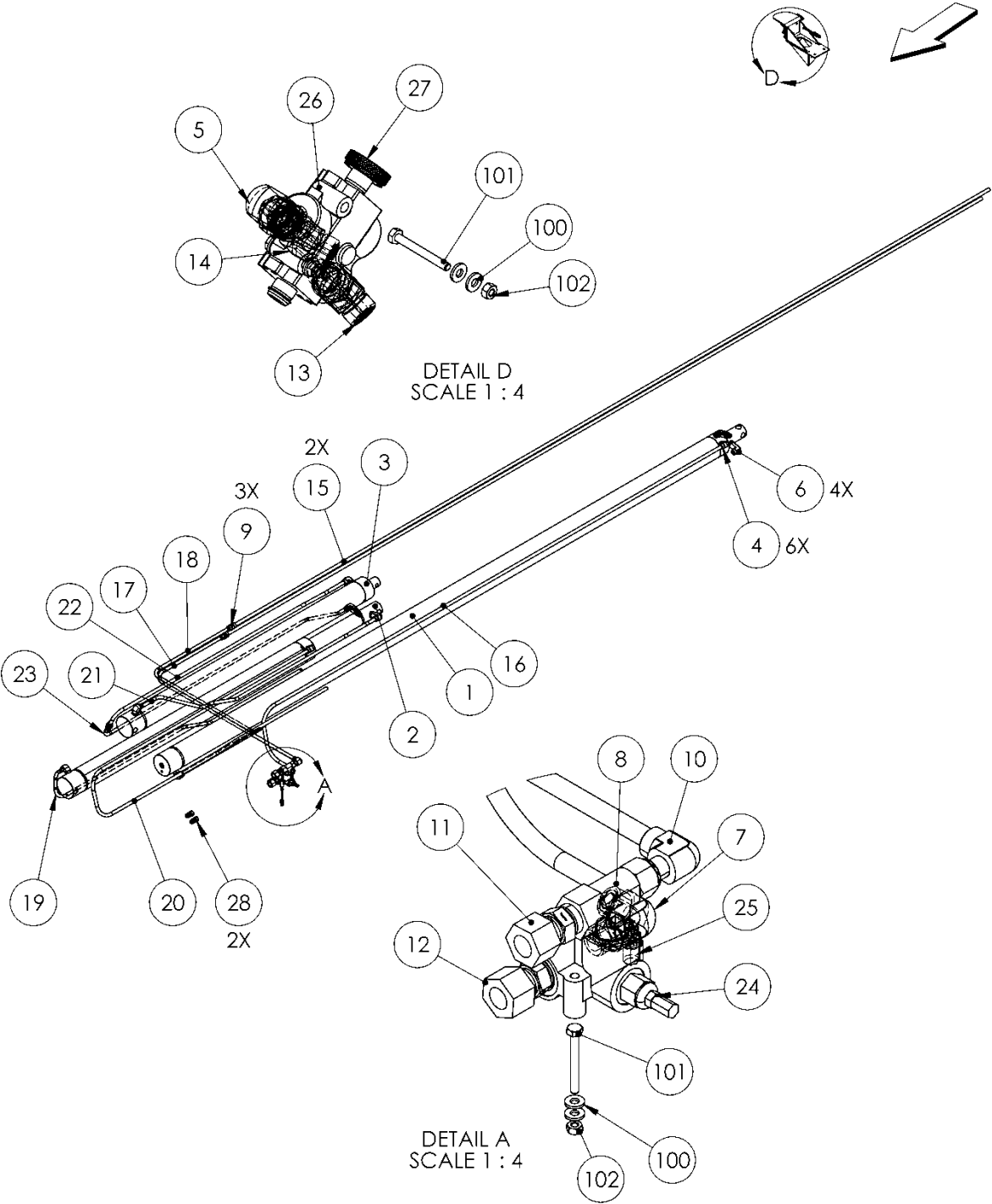


7519-03-01 *Hydraulics, Push Cylinders*

<i>Ref</i>	<i>Part No.</i>	<i>Description</i>	<i>Parts</i>	<i>Will Fit SN</i>	<i>Remarks</i>
1	PR80400	Hyd. Cylinder, 4 x 144, Main Push Cylinder	1		
2	PR80401	Hyd. Cyl. 4 x 57.5 x 2.75, 1st.Push Cylinder	1		
3	PR80402	Hyd. Cyl, 4 x 57.5 x 2, Secondary Push Cyl.	1		
4	A-FF6801-10-10	Elbow, 10MFF x 10SAE	8		
5	A-FF6801-10-08	ELBOW, 10MFF X 8SAE	1		
6	A-FF6801-L-10-10	Long Elbow, 10MFF x 10SAE	2		
7	A-FF6801-10-10-4SAE	Elbow, 10MFF x 10SAE, w/ 4SAE Port	1		
8	A-FF6803-10-10-10	TEE, 10MFF X 10MFF X 10 SAE	1		
9	A-FF2403-10-10	Union, 10MFF x 10MFF	3		
10	A-FF6500-10-10	Elbow, 10MFF x 10FFFX	1		
11	A-FF6510-10-10	Union Swivel, 10FFFX X 10FFFX	1		
12	A-FF6507-10-10	STRAIGHT, 10FFFX x 10SAE	1		
13	A-FF6802-10-08	Elbow, 45, 10MFF x 8SAE	1		
14	A-FF6502-10-10	Elbow, 45, 10MFF x 10FFFX	1		
15	H-T7080	5/8' Hyd Tube, Sliding Floor, HR880	2		
16	H-T7065	5/8' Hyd Tube, Sliding Floor, HR880	1		
17	H-T7066	5/8' Hyd Tube, Sliding Floor, HR880	1		
18	H-T7069	5/8' Hyd Tube, Sliding Floor, HR880	1		
19	H-T7070	5/8' Hyd Tube, Sliding Floor, HR880	1		
20	H-T7071	5/8' Hyd Tube, Pusher Bott, HR880	1		
21	H-T7072	5/8' Hyd Tube, Pusher Bottom, HR880	1		
22	H-T7073	5/8' Hyd Tube, Pusher Top, HR880	1		
23	H-T7074	5/8' Hyd Tube, Pusher Top, HR880	1		
24	HV-RV-3H	Relief Valve w/ SAE #10 Ports	1		
25	HA-1004-4	Test Point Plug #4 SAE Thread	1		
26	HVE-0038	Selector Valve Less Knob, Spring Offset, Shut Off	1		
27	HVE-0038-KN	Steel Knurled-Rim Knob, For HVE-0038	1		
28	A-QDS71X15	Ag Quick Coupler, 1/2' ISO5675 x 8SAE	2		
100	BL-4-FW	1/4 USS FW ZC	8		

101	BL-4-225-H	1/4 UNC X 2-1/4 HH C/S BOLT G5 ZC	4
102	BL-4-LN	1/4-20 HEX LN NE ZC	4

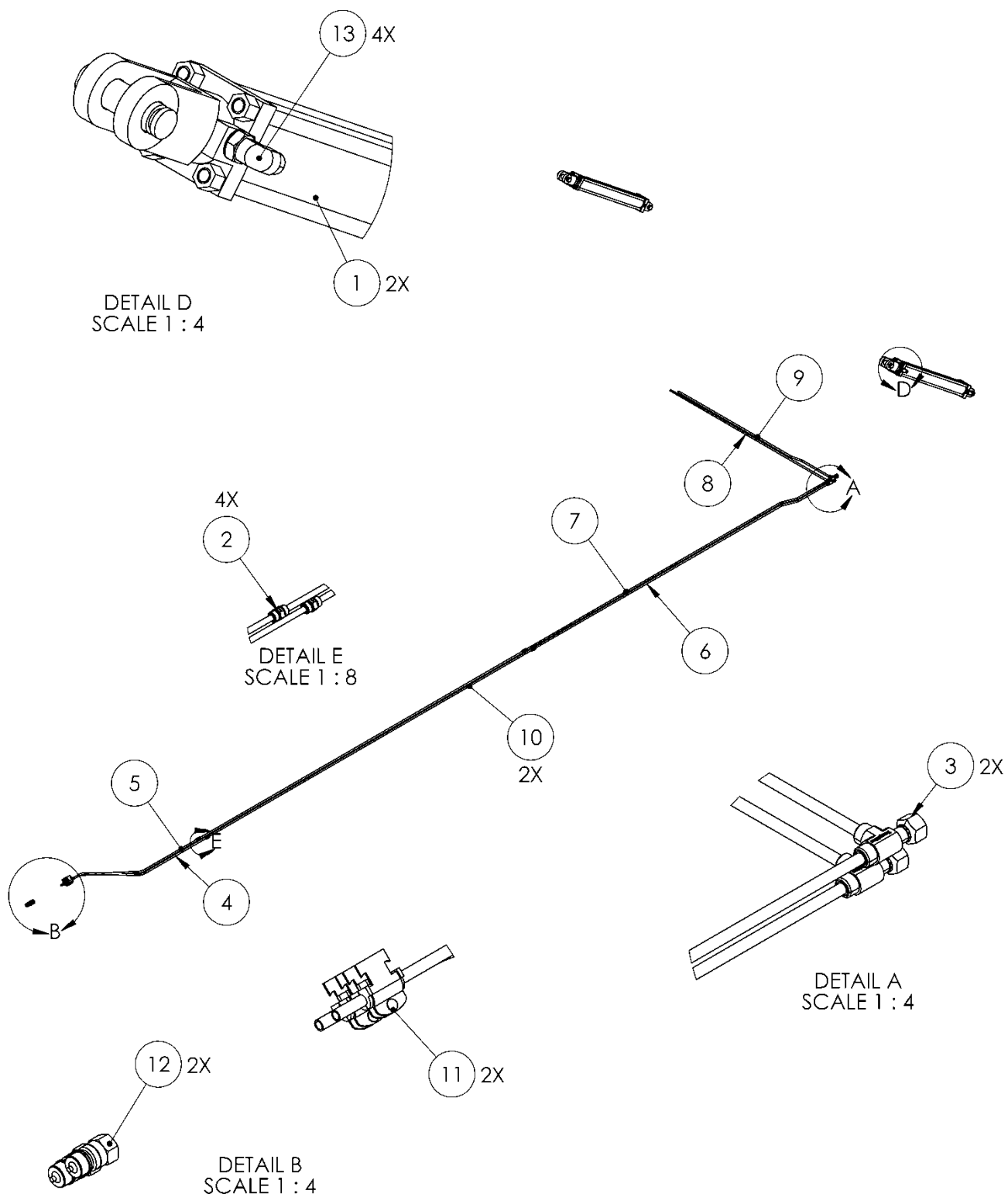
7519-03-01



7519-03-02 *Hydraulics, Endgate Cylinders*

<i>Ref</i>	<i>Part No.</i>	<i>Description</i>	<i>Parts</i>	<i>Will Fit SN</i>	<i>Remarks</i>
1	HC-250-2408-ORP	Hydraulic Cylinder 2 1/2 x 24 #8 SAE w/ O-Piston Ring Seal	2		
2	A-FF2403-06-06	Union, 6MFF X 6MFF	4		
3	A-FF6602-06-06-06	Run Tee, 6MFF x 6MFF x 6FFFX	2		
4	H-T7067	3/8' Hyd Tube, Endgate, Front	1		
5	H-T7068	3/8' Hyd Tube, Endgate, Front	1		
6	H-T7075	3/8' Hyd Tube, Endgate, Back	1		
7	H-T7076	3/8' Hyd Tube, Endgate, Front	1		
8	H-T7077	3/8' Hyd Tube, Endgate, Right	1		
9	H-T7078	3/8' Hyd Tube, Endgate, Right	1		
10	H-T7079	3/8' Hyd Tube, Endgate, Front	2		
11	HA-1074-H	Hydra-zorb Tube Clamp 3/8' (3 pc.)	2		
12	A-QDS71X15	Ag Quick Coupler, 1/2' ISO5675 x 8SAE	2		
13	A-FF6801-06-08	ELBOW, 90, 6MFF X 8SAE	4		

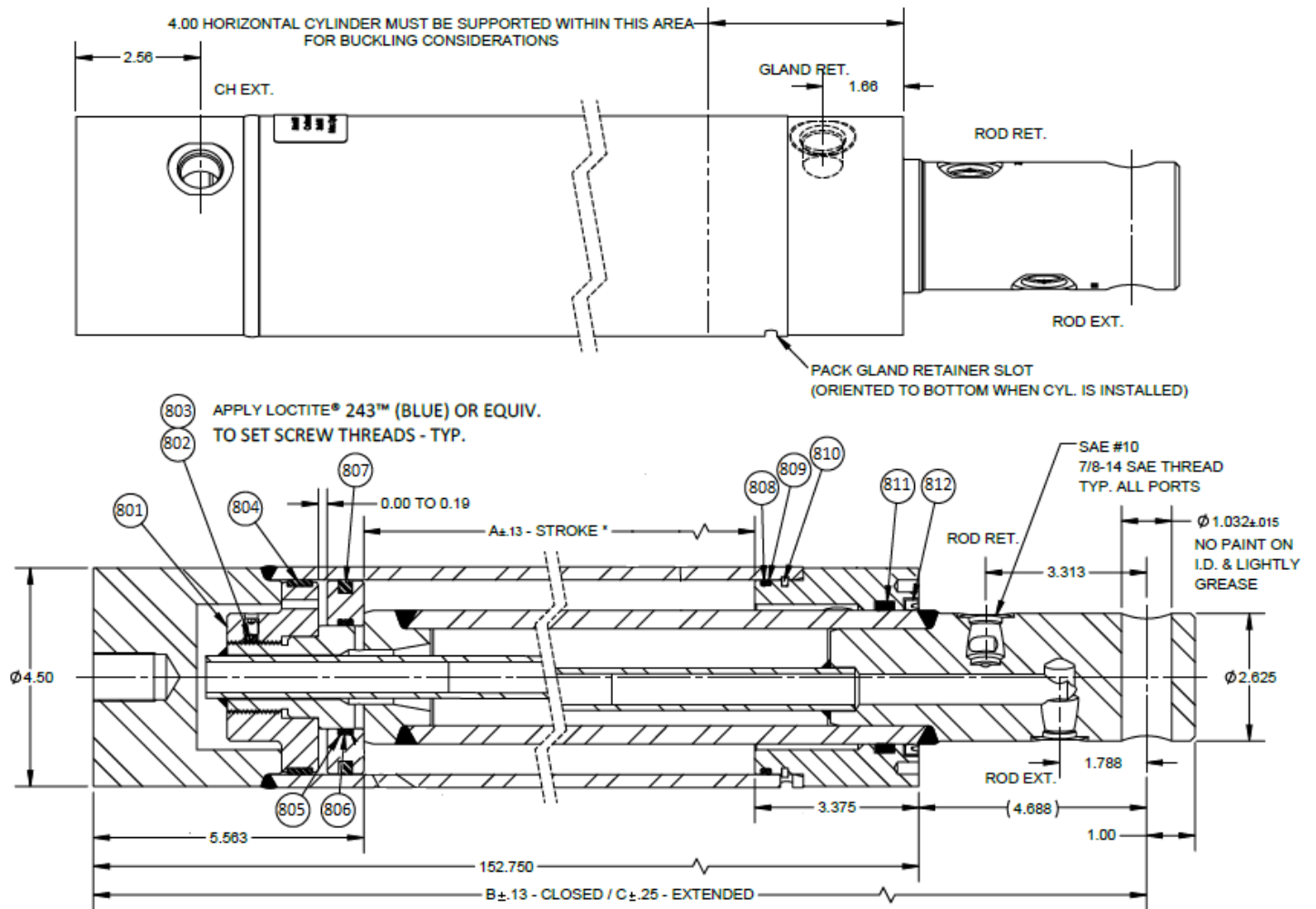
7519-03-02



7514-03-03 *Cylinders, Sliding Floor*

<i>Ref</i>	<i>Part No.</i>	<i>Description</i>	<i>Parts</i>	<i>Will Fit SN</i>	<i>Remarks</i>
	PR80400	Hyd. Cylinder, 4 x 144, Main Push Cylinder	0		
800	PR80401-SK	Seal Kit	1		
801	PR80401-A	Stover Nut	1		
802	PR80401-B	Backup Washer	2		
803	PR80401-C	O-Ring	1		
804	PR80401-D	Wear Ring	1		
805	PR80401-E	O-Ring	1		
806	PR80401-F	Backup Washer	2		
807	PR80401-G	O-Ring	1		
808	PR80401-H	O-Ring	1		
809	PR80401-I	Backup Washer	1		
810	PR80401-J	Lock Ring	1		
811	PR80401-K	Bearing Seal	1		
812	PR80401-L	Wiper	1		

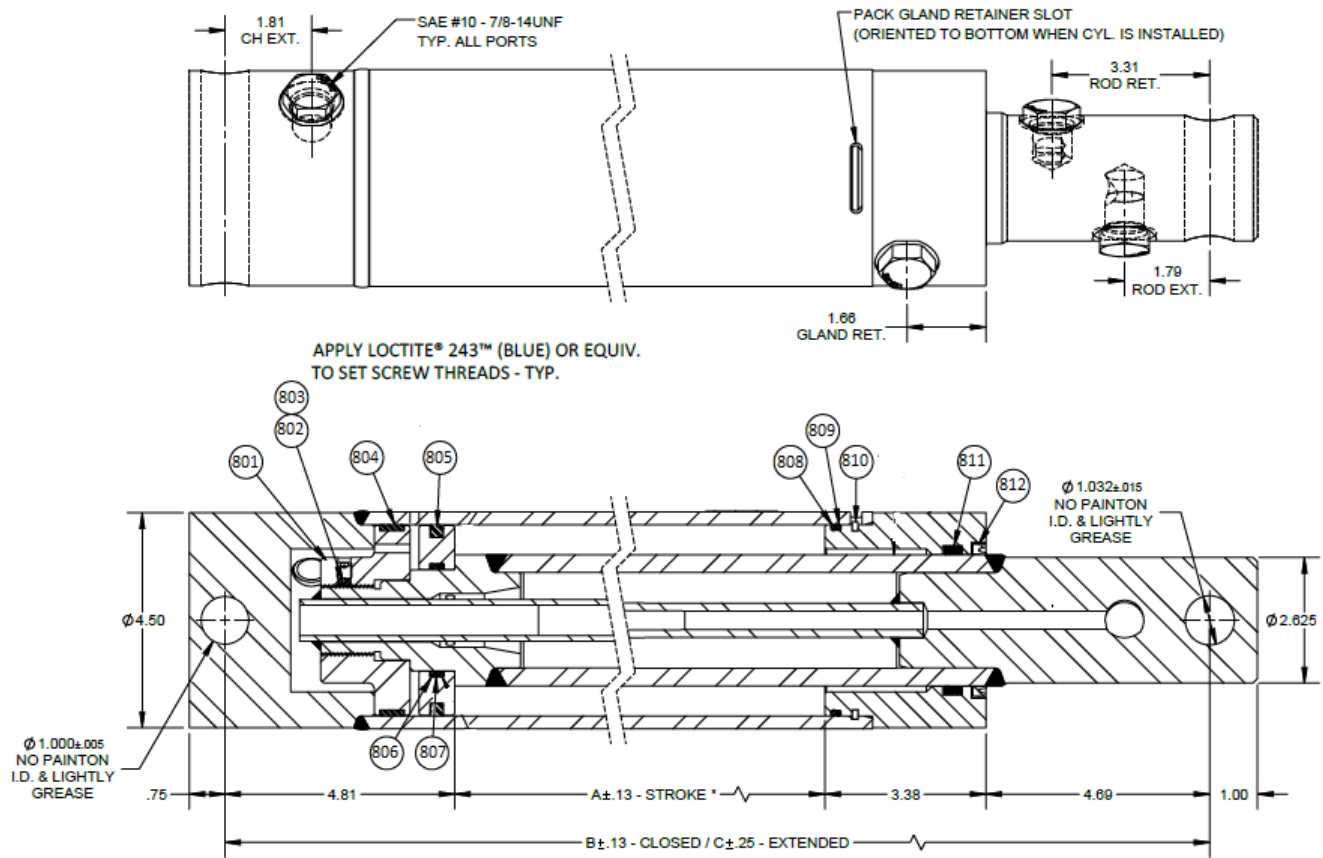
7519-03-03



7514-03-04 *Cylinders, Main Pusher Cylinder*

<i>Ref</i>	<i>Part No.</i>	<i>Description</i>	<i>Parts</i>	<i>Will Fit SN</i>	<i>Remarks</i>
	PR80401	Hyd. Cyl. 4 x 57.5 x 2.75, 1st.Push Cylinder	0		
800	PR80401-SK	Seal Kit	1		
801	PR80401-A	Stover Nut	1		
802	PR80401-B	Backup Washer	2		
803	PR80401-C	O-Ring	1		
804	PR80401-D	Wear Ring	1		
805	PR80401-E	O-Ring	1		
806	PR80401-F	Backup Washer	2		
807	PR80401-G	O-Ring	1		
808	PR80401-H	O-Ring	1		
809	PR80401-I	Backup Washer	1		
810	PR80401-J	Lock Ring	1		
811	PR80401-K	Bearing Seal	1		
812	PR80401-L	Wiper	1		

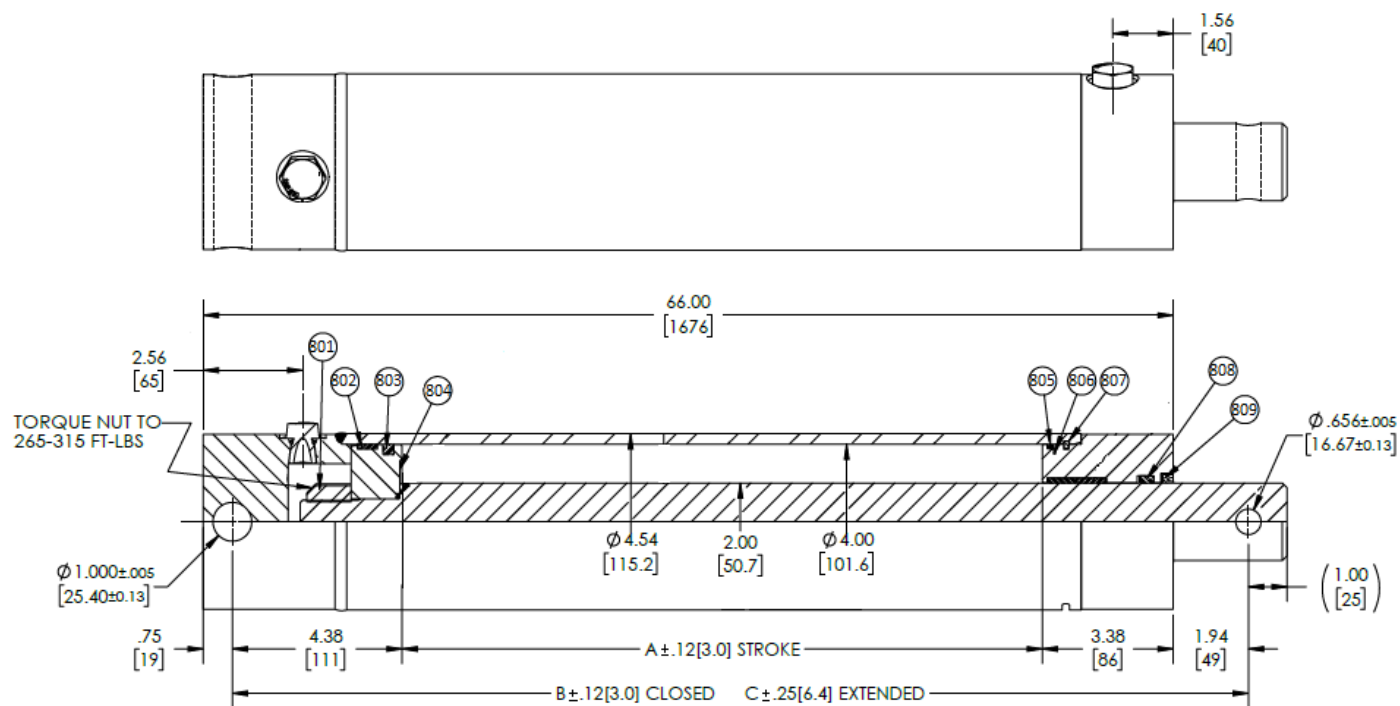
7519-03-04



7514-03-05 *Cylinder, Secondary Pusher*

<i>Ref</i>	<i>Part No.</i>	<i>Description</i>	<i>Parts</i>	<i>Will Fit SN</i>	<i>Remarks</i>
	PR80402	Hyd. Cyl, 4 x 57.5 x 2, Secondary Push Cyl.	0		
800	PR80402-SK	Seal Kit	1		
801	PR80402-A	Stover Nut	1		
802	PR80402-B	Wear Ring	1		
803	PR80402-C	O-Ring	1		
804	PR80402-D	O-Ring	1		
805	PR80402-E	O-Ring	1		
806	PR80402-F	Backup Washer	1		
807	PR80402-G	Lock Ring	1		
808	PR80402-H	Bearing Seal	1		
809	PR80402-I	Wiper	1		

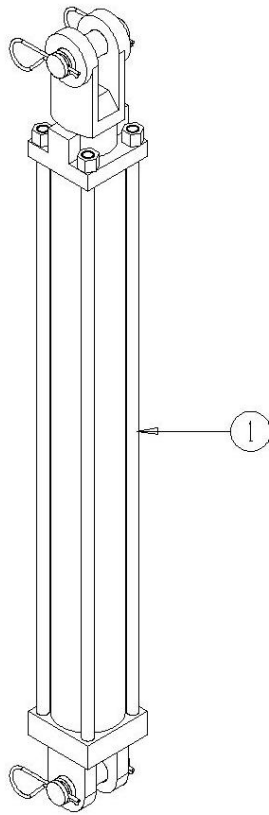
7519-03-05



7519-03-06 *Cylinder, Endgate*

<i>Ref</i>	<i>Part No.</i>	<i>Description</i>	<i>Parts</i>	<i>Will Fit SN</i>	<i>Remarks</i>
1	HC-250-2408-OR	Hydraulic Cylinder 2 1/2 x 24 #8 SAE w/ O-Piston Ring Seal	0		NOT TO BE USED IN SINGLE ACTING APPLICATIONS Replaces HC-250-2408-IV
801	HC-250-125	Seal Kit for 2 1/2' x 1 1/4' Cylinder	0	HC-250-3008 (642602, 645596) HC-250-2408-OR	2500 or 3000psi cylinders

7519-03-06

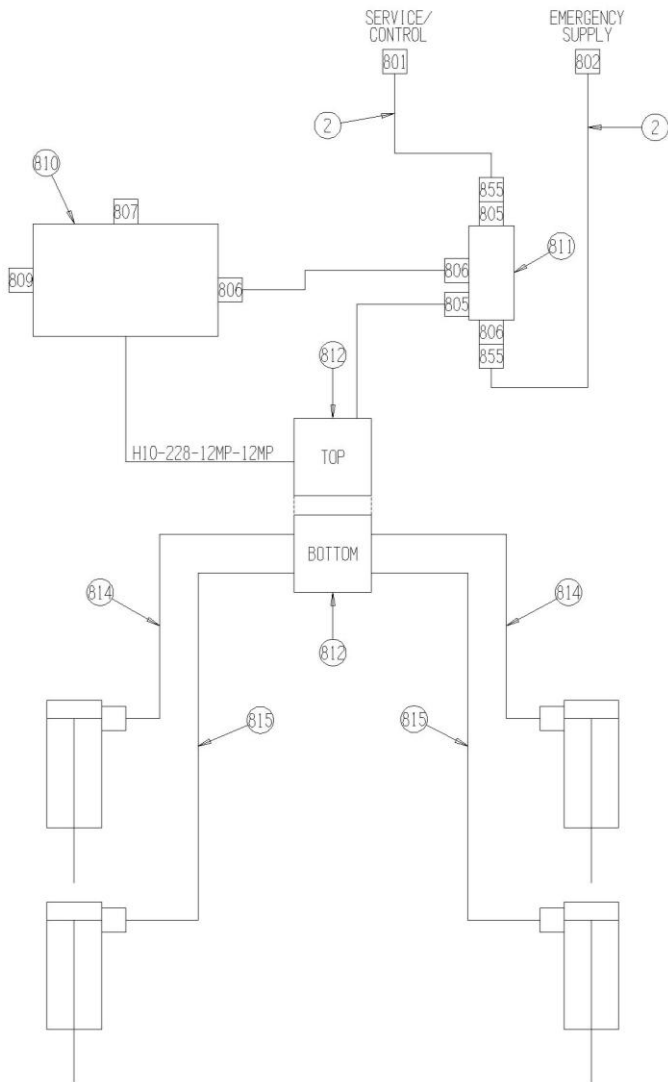
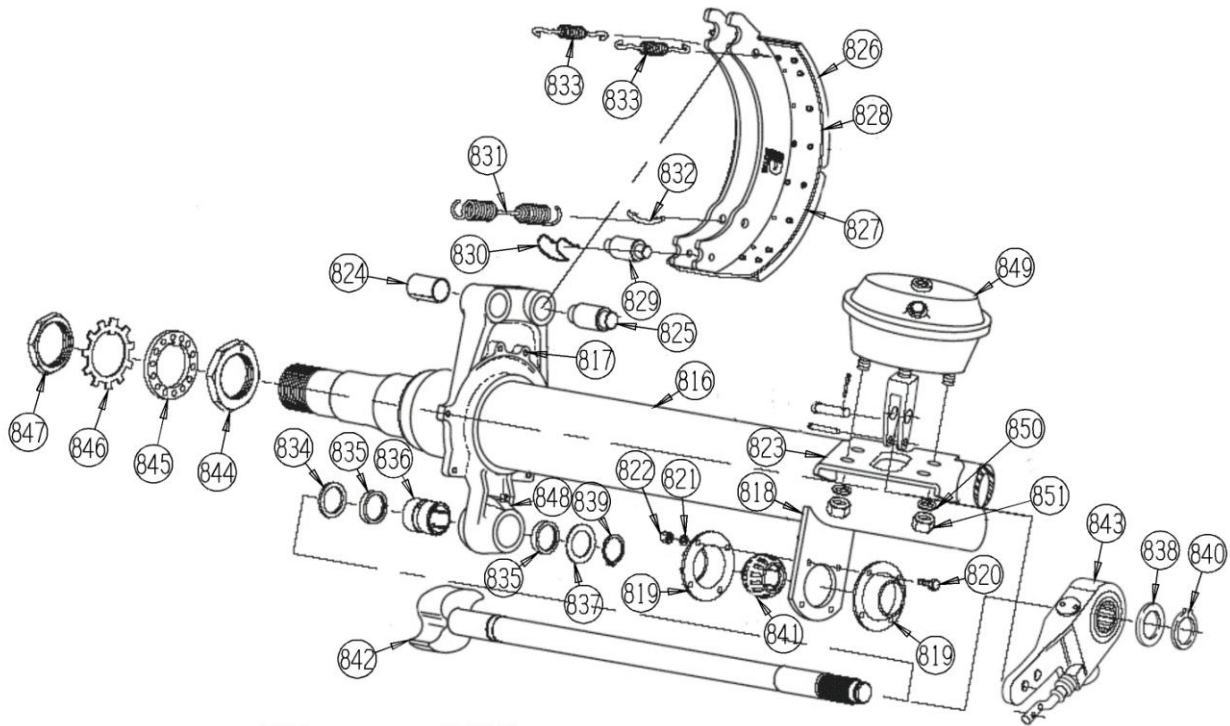


7519-04-01 Air Brakes

Ref	Part No.	Description	Parts	Will Fit SN	Remarks
1	TRL-BRK-0001	Trailer Air Brake, Brake Actuating Kit	1		
2	TRL-BRK-0002	Air Line Set for Air Brakes	1		
3	AIR-N6DOT	3/8' Nylon Tubing @ ft., Meets D.O.T. Specs, Black	23.875		
4	A-1405-8-8	1/2' NPT Coupler W/Swivel	2		
5	A-1501-12-12	1/2 MP x 1/2 FPX 90°	1		
6	A-1404-12-12	1/2 MP x 1/2 FPX	1		
7	A-5405-4-6	Pipe Adapter 3/8 FPT x 1/4 MPT	2		
8	LA-309	Universal Gladhand Holder	2		
9	TRL-BRK-0001-34	Air Chamber Assembly	4		
10	PR60032	Panel, Air Compressor Shield, 880 Spreader	1		
601	H10-228-12MP-12MP	5/8 in hose 3/4MP x 3/4MP x 228 in long	1		
801	TRL-BRK-0003	Gladhand - Service	1		
802	TRL-BRK-0004	Gladhand - Emergency	1		
803	TRL-BRK-0005	1/2' Bulkhead Coupling	2		
804	TRL-BRK-0006	3/8 x 1/4 Male Connector	2		
805	TRL-BRK-0007	3/8 x 3/8 Male Connector	3		
806	TRL-BRK-0008	3/8 x 3/8 Male Elbow	5		
807	TRL-BRK-0009	1/4' Drain Valve	1		
808	TRL-BRK-0010	3/4' Hex Nipple	1		
809	TRL-BRK-0011	3/8' Pipe Plug	1		
810	TRL-BRK-0012	Air Tank - Standard 9'x28'	1		
811	TRL-BRK-0013	Emergency Spool	1		
812	TRL-BRK-0014	Air Relay Valve	1		
814	TRL-BRK-0016	3/8' x 40' Air Brake Hose Assy	2		
815	TRL-BRK-0017	3/8' X 72' Air Brake Hose Assy	2		
816	TRL-BRK-0001-01	Beam Options	1		Special Order Only
817	TRL-BRK-0001-02	Spider	2		Special Order Only
818	TRL-BRK-0001-03	Bracket-Camshaft Support	2		Special Order Only
819	TRL-BRK-0001-04	Retainer Plate	4		Special Order Only

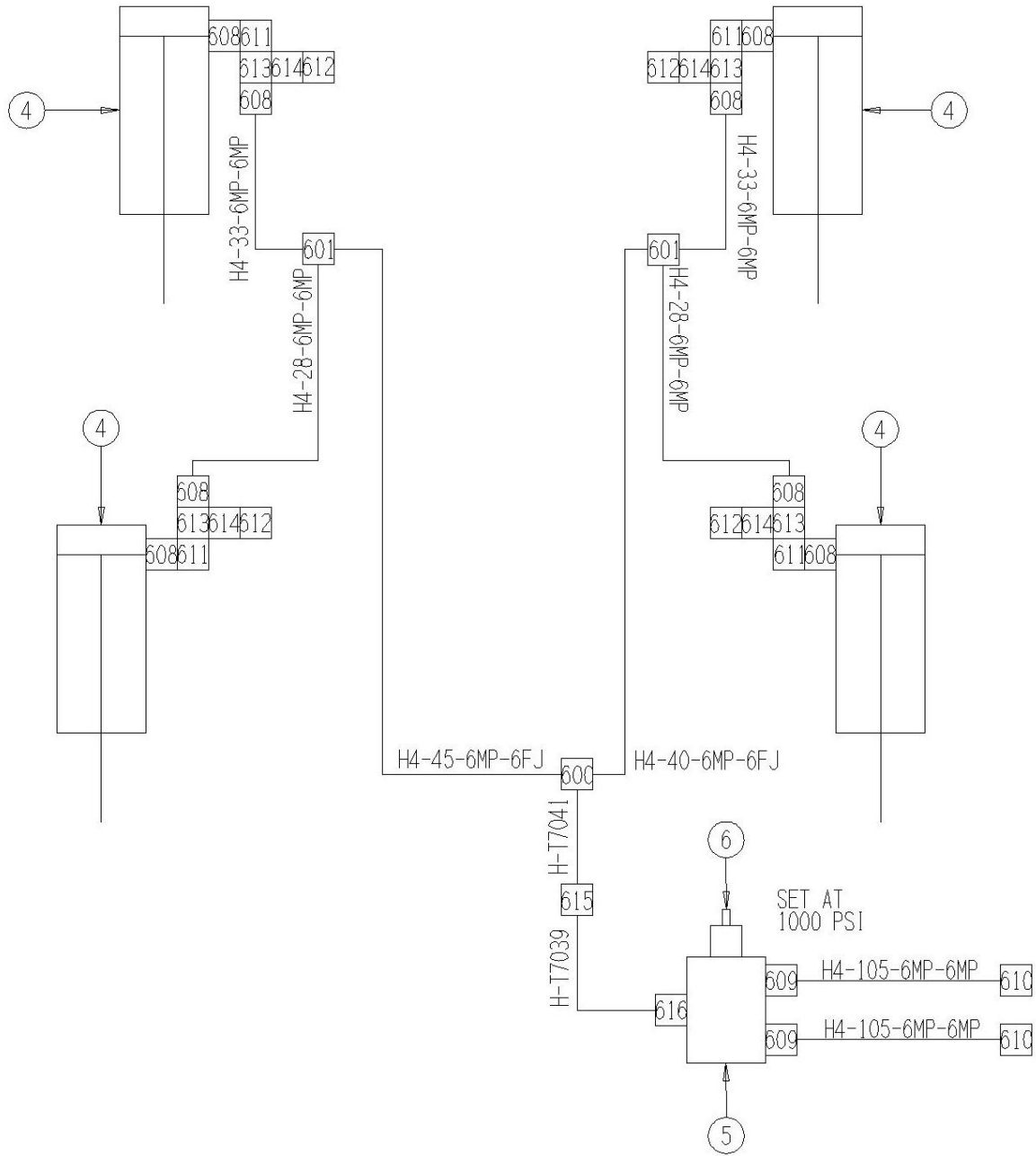
820	TRL-BRK-0001-05	Bolt, Retainer Plate Attachment	8	Special Order Only
821	TRL-BRK-0001-06	Lockwasher, Cover Attachment	8	Special Order Only
822	TRL-BRK-0001-07	Nut, Retainer Plate Attachment	8	Special Order Only
823	TRL-BRK-0001-08	Bracket, Air Chamber Mounting	2	Special Order Only
824	TRL-BRK-0001-09	Bushing, Spider Anchor Pin	4	Special Order Only
825	TRL-BRK-0001-10	Anchor Pin	4	Special Order Only
826	TRL-BRK-0001-11	Shoe and Lining Assembly	4	Special Order Only
827	TRL-BRK-0001-12	Lining, Brake Block Cam	4	Special Order Only
828	TRL-BRK-0001-13	Lining, Brake Block Anchor	4	Special Order Only
829	TRL-BRK-0001-14	Roller	4	Special Order Only
830	TRL-BRK-0001-15	Retainer, Roller	4	Special Order Only
831	TRL-BRK-0001-16	Spring, Shoe Retractor	2	Special Order Only
832	TRL-BRK-0001-17	Retainer Pin, Retractor Spring	4	Special Order Only
833	TRL-BRK-0001-18	Spring, Shoe Keeper	4	Special Order Only
834	TRL-BRK-0001-19	Washer, Camshaft	2	Special Order Only
835	TRL-BRK-0001-20	Grease Seal	4	Special Order Only
836	TRL-BRK-0001-21	Bushing, Camshaft Spider	2	Special Order Only
837	TRL-BRK-0001-22	Washer	2	Special Order Only
838	TRL-BRK-0001-23	Washer, Camshaft Slack Adjuster End	2	Special Order Only
839	TRL-BRK-0001-24	Snap Ring	2	Special Order Only
840	TRL-BRK-0001-25	Retainer, Camshaft Slack Adjuster End	2	Special Order Only
841	TRL-BRK-0001-26	Bushing, Camshaft Support	2	Special Order Only
842	TRL-BRK-0001-27	Camshaft, LH/RH	2	Special Order Only
843	TRL-BRK-0001-28	Slack Adjuster Straight Automatic, 1.46 x 28-spline 6' Arm	2	Special Order Only
844	TRL-BRK-0001-29	Nut, Inner Spindle Bearing	2	Special Order Only
845	TRL-BRK-0001-30	Lockwasher, Indexing	2	Special Order Only
846	TRL-BRK-0001-31	Lockwasher, Tab	2	Special Order Only
847	TRL-BRK-0001-32	Nut, Outer Spindle	2	Special Order Only
848	TRL-BRK-0001-33	Grease Fitting, 65-	2	Special Order Only
850	TRL-BRK-0001-35	Lockwasher, Air Chamber Mounting	4	Special Order Only
851	TRL-BRK-0001-36	Nut, Air Chamber Mounting	4	Special Order Only
852	TRL-BRK-0001-37	Sensor Block	2	Special Order Only

853	TRL-BRK-0001-38	Retainer Clip	2	Special Order Only
854	TRL-BRK-0001-39	ABS Sensor, 90-	2	Special Order Only
855	A-5502-6-8	Street Elbow 90, 3/8 MP x 1/2 FP	2	



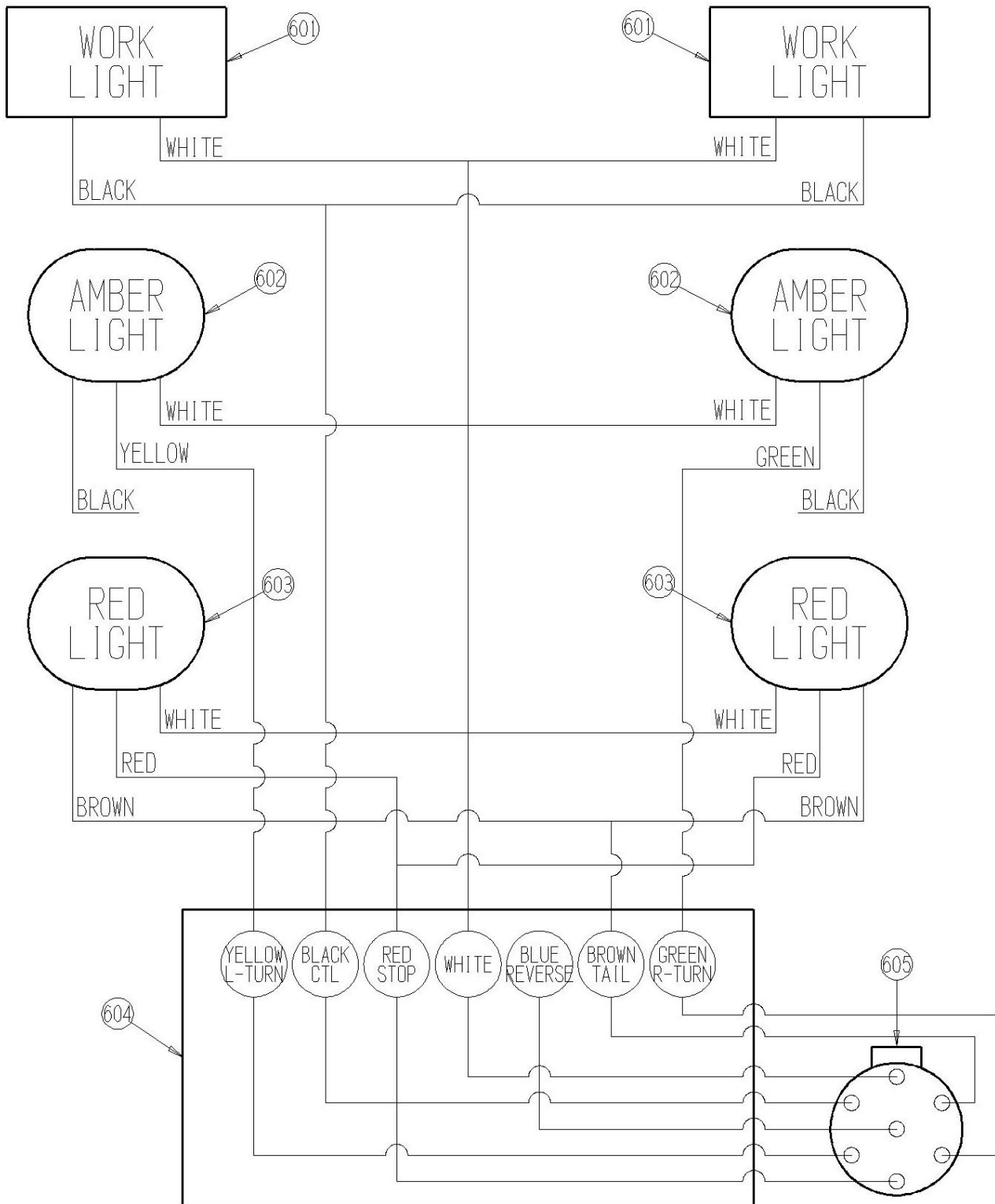
7519-04-02 Hydraulic Brakes

<i>Ref</i>	<i>Part No.</i>	<i>Description</i>	<i>Parts</i>	<i>Will Fit SN</i>	<i>Remarks</i>
1	PR60074	Hydraulic Brake Mount, Spreader	4		
2	H-T7039	Hyd Tube, 3/8', Hyd Brakes, 1880 Push	1		
3	H-T7041	Hyd Tube, 3/8', Endgate, Back, 1880 Push	1		
4	PR60073	Spring Return Brake Cylinder, Hyd. Brakes	4		
5	HV-1002	Pressure Reducing/Relieving Valve 50-1500 w/RFF Body	1		
6	HV-1002-K	Standard Knob for HV-1002	1		
600	A-2603-6	Tee, 3/8' MJ x 3/8' MJ x 3/8' MJ	1		
601	A-1601-6-6-6	3/8 MP x 3/8 FPX x 3/8FPX Tee	3		
602	H4-28-6MP-6MP	1/4in Hose 3/8MP x 3/8MP x 28 in Long	2		
603	H4-45-6MP-6FJ	1/4' x 45' hose, 6MP x 6FJ	1		
604	H4-40-6MP-6FJ	1/4' x 40' hose, 6MP x 6FJ	1		
606	H4-105-6MP-6MP	1/4 in hose 3/8MP x 3/8MP x 105 in long	2		
607	H4-33-6MP-6MP	1/4 hose 3/8MP x 3/8MP x 33' long	2	20095001-	
608	A-1501-6-6	3/8' MP x 3/8' FPX90-	8		
609	A-6901-6-6	6 SAE x 3/8' FPX 90-, Forged	2		
610	A-QD2010-8-8	Tractor Quick Coupler, Male, 1/2' w/ FPT	2		
611	A-5404-6-6	Hex Nipple, 3/8' x 3/8'	4		
612	HA-1004-T	Test Point Plug, 1/4' NPT	4		
613	A-1601-04-06-06	3/8 MP x 3/8' FPX x 3/8' FPX Tee	4		
614	A-5000-4	3/8' NPTF Hex Pipe Cplg.	4		
615	A-2403-6-6	Union, 3/8' MJ x 3/8' MJ	1		
616	A-6801-6	Elbow, 3/8' MJ x 6 SAE	1		



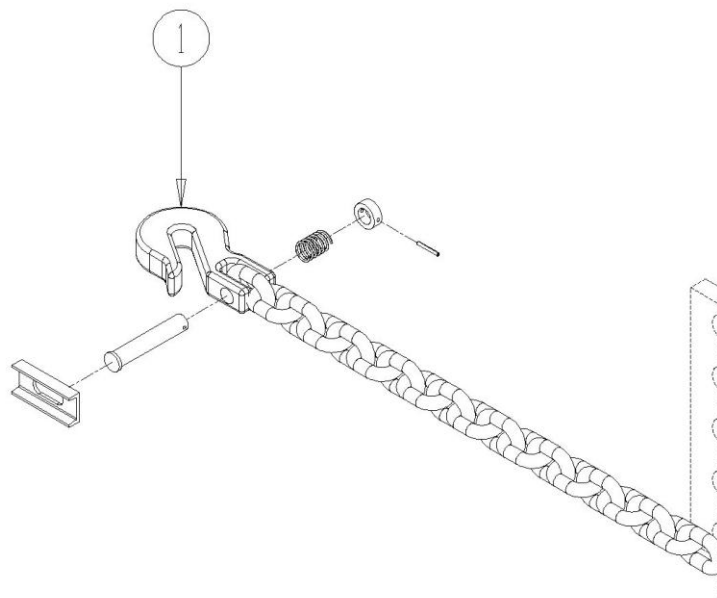
7519-05-01 *Electrical & Lighting*

<i>Ref</i>	<i>Part No.</i>	<i>Description</i>	<i>Parts – Assembly</i>		<i>Will Fit SN</i>	<i>Remarks</i>
1	EL-50561-397	Spreader Light Harness, Left Side, 1880 Spreader	1			
2	EL-50562-416	Light Harness, Right Side, 1880 Spreader	1			
3	EL-40604-13	Harness, Work Lights, Spreader	2			
4	EL-50780-362	7 Conductor, 30' Long, Harness, 1880 Spreader	1			
100	BL-6-125-C	3/8 UNC X 1 1/4 CARRIAGE BOLT GR5 ZINC	8			
101	BL-6-LW	3/8 SPLIT LW ZC	8			
102	BL-6-N	3/8-16 HEX NUTS ZC	8			
103	BL-6-SW	3/8 SAE FW ZC	16			
104	BL-6-100-H	3/8 UNC X 1 HH C/S BOLT GR5 ZINC	4			
105	BL-6-LN	3/8 UNC FIN HEX LOCK NUT NE A563 GrA ZINC	4			
106	BL-1224-125-DT	12-24 x 1 1/4' Drill and Tap Screw	6			
107	BL-4-FW-8	1/4' Flat Washer Grade 8	10			
108	HA-1031	Hydraulic Hose Holder 3/8	6			
109	BL-4-075-H	1/4 UNC X 1/2 HH C/S BOLT GR5 ZINC	2			
110	BL-4-LN	1/4-20 HEX LN NE ZC	2			
111	ELL-375	3/8' Wire Loom @ft	2			
601	EL-1233	Light, Auxiliary Work Light, Clear, Trapezoid Beam, TL#80394	2		Replaces EL-1201	
602	PR63007	Light Bracket	2			
603	EL-1503	4-Pin Light Connector, LH	1			
604	ELE-15-964	Junction Box, 4x8x3.5deep, plastic, w/knockouts & plugs	1	19426		
605	ELT-37675	Seven Conductor Plug with Spring, Round Connection	1	Trucks		
606	EL-1501	Light Housing, LH	1			
607	EL-1502	Light Housing, RH	1			
609	EL-1504	4-Pin Light Connector, RH	1			



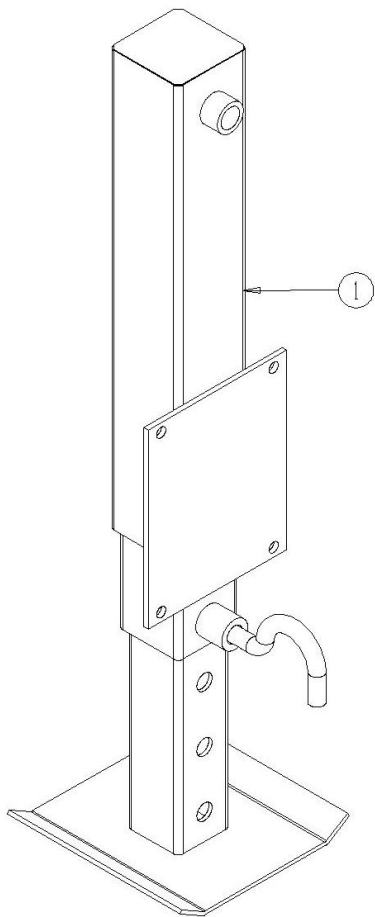
7519-05-02 *Safety Tow Chain*

<i>Ref</i>	<i>Part No.</i>	<i>Description</i>	<i>Parts</i>	<i>Will Fit SN</i>	<i>Remarks</i>
1	FRM-3172	Safety Chain, Agricultural, 60,600 lb. Capacity	1		
101	BL-24-FW	1 1/2" Flat Washer, Zinc	1		
102	BL-16-FW	1" Flat Washer, Zinc	2		
103	BL-16-500-H	1 UNC x 5 HH C/S GR5 ZINC	1		
104	BL-16-LN	1" Lock Nuts w/ Nylon Inserts	1		



7514-05-03 Jack Stand

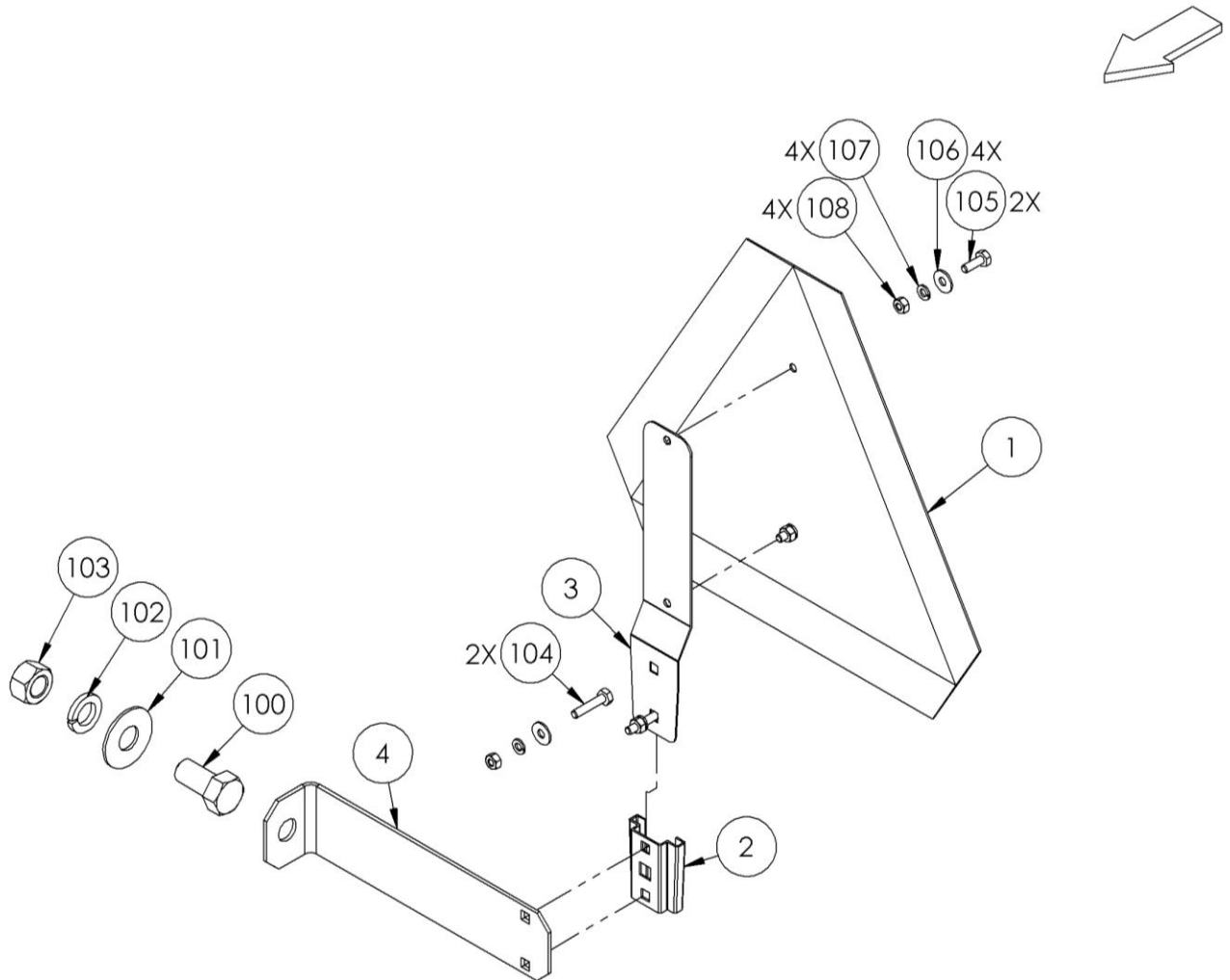
Ref	Part No.	Description	Parts	Will Fit SN	Remarks
1	WH-1131	Jack, 1880 Spreader	1		
800	WH-1124-B	Handle, Bulldog Jack	1		



7514-05-04 SMV Emblem & Brackets

<i>Ref</i>	<i>Part No.</i>	<i>Description</i>	<i>Parts</i>	<i>Will Fit SN</i>	<i>Remarks</i>
1	SMV-PL	SMV Sign, Metal	1		
2	SMV-S	Socket for Spade Mount	1		
3	SMV-SM	Spade Mount	1		
4	PR39117	Bracket, SMV Sign, Spreader	1		
101	BL-5-075-H	5/16-18 X 1/2 HEX CAP G5 ZC	2		
102	BL-4-062-C	1/4" x 5/8" Zinc Carriage Bolt	2		
103	BL-5-LN	5/16-18 HEX LN NE ZC	2		
104	BL-4-LN	1/4-20 HEX LN NE ZC	2		
105	BL-5-FW	5/16 USS FW ZC	2		

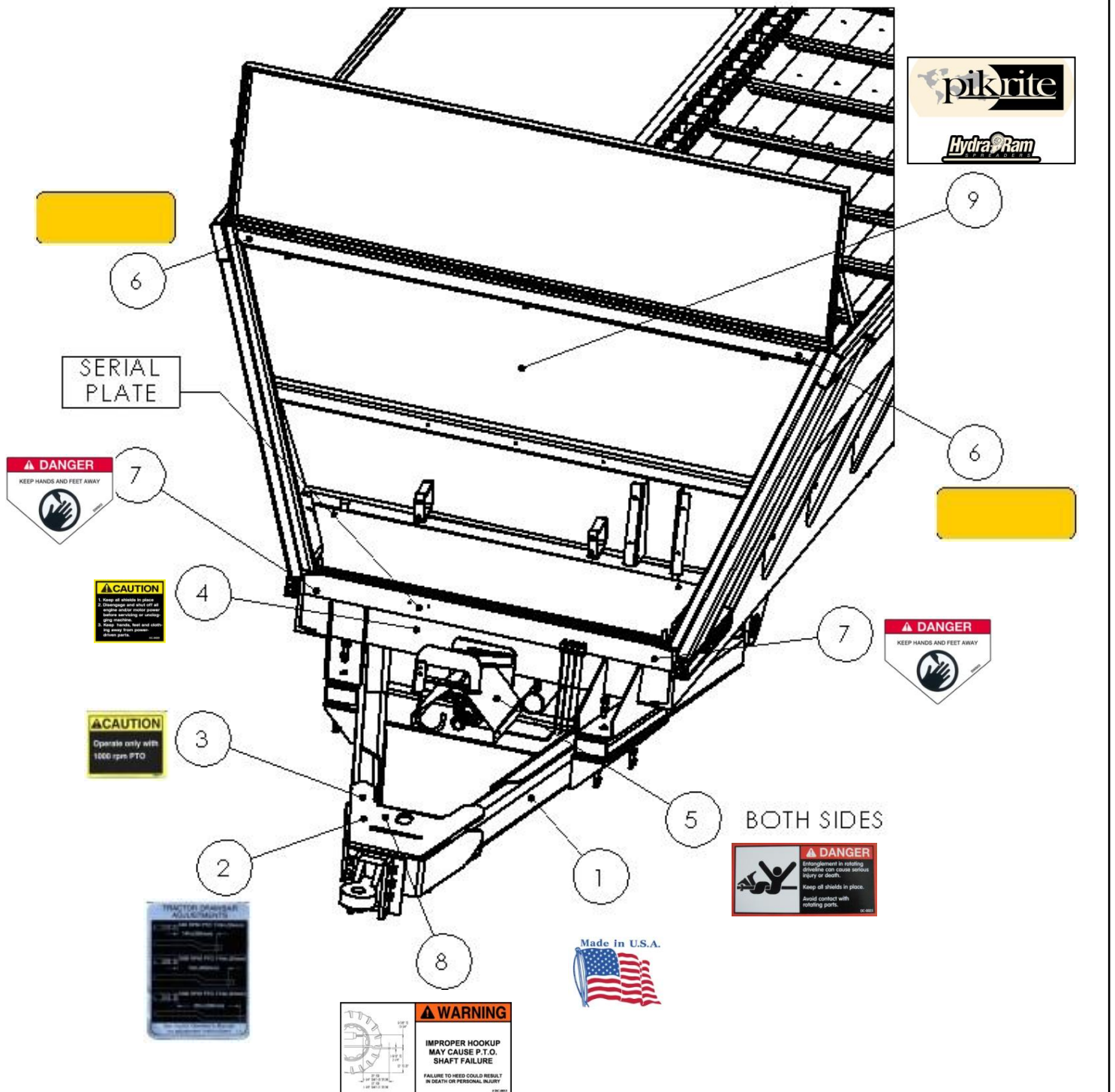
7514-05-04



7514-06-01 *Decals, Front of Spreader*

<i>Ref</i>	<i>Part No.</i>	<i>Description</i>	<i>Parts</i>	<i>Will Fit SN</i>	<i>Remarks</i>
1	DC-0011	Decal, All, 'Made in USA', White Back w/ Red & Blue Letters	1		
2	DC-0021	Decal, Caution, 1000 rpm PTO	1		
3	DC-0022	Decal, Tractor Drawbar Adjustments	1		
4	DC-0023	Decal, Caution, Keep All Shields In Place	1		
5	DC-0025	Decal, Danger, Entanglement In Rotating Drive	2		
6	DC-0034	Decal, Amber, Reflector, Spreader	2		** Replace with EL-1226 ** Do Not Order
7	DC-0082	Decal, Hydra-Pull, Large, Front & Side Panels	1		
8	DC-1174	Decal, Danger Keep Hands and Feet Away	2		
9	DC-0107	Decal, HYDRA-RAM	1		
101	RI-3-6-P	Pop Rivets 3/16 x 3/8 Domed, .375 head, ea.	2		

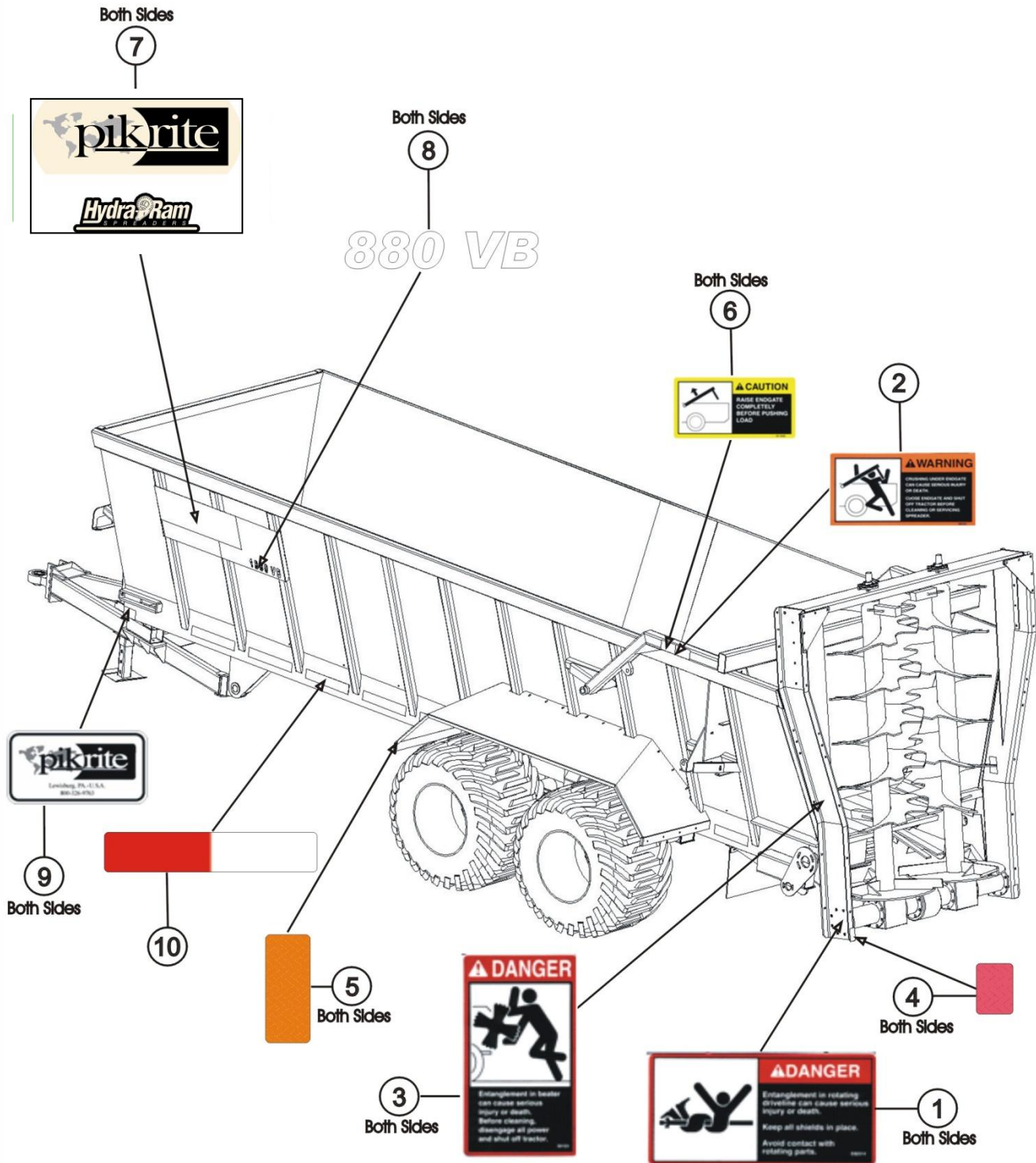
7514-06-01



7514-06-02 *Decals, Side & Rear*

<i>Ref</i>	<i>Part No.</i>	<i>Description</i>	<i>Parts</i>	<i>Will Fit SN</i>	<i>Remarks</i>
1	DC-0025	Decal, Danger, Entanglement In Rotating Drive	2		
2	DC-0026	Decal, Warning, Crushing Under Endgate	4		
3	DC-0030	Decal, Danger, Entanglement In Beater	2		
4	DC-0033	Decal, Red, Reflector, Spreader	2		
5	DC-0034	Decal, Amber, Reflector, Spreader	2		** Replace with EL-1226 ** Do Not Order
6	DC-0038	Decal, Caution, Raise Endgate Completely	2		
7	DC-0107	Decal, Hydra-Ram	2		
8	DC-0083	Decal, 1880VB	2		
9	DC-4W	Decal, Logo, White, 5.25' Long, Tanks, 1/29/99	2		
10	DC-3025	Red and White Reflective Tape @ 150 ft Roll	0.14667		

7514-06-02



NOTES

WARRANTY

Pik Rite, Inc. provides a limited warranty assuring any new Hydra-Ram Spreader to be free from defects in material and workmanship for a period of two (2) years from the original date of purchase.

Pik Rite will repair or replace, at its option and without charge, any defective or malfunctioning part (excluding items of normal wear or misuse) of the spreader for this allotted time.

PIK RITE MAKES NO WARRANTY OF
MERCHANTABILITY OR FITNESS FOR A
PARTICULAR USE.

Customer's Responsibility:

It is the customer and/or operator's responsibility to read the Operator's Manual, to operate, lubricate, maintain and store the equipment in accordance with all instructions and safety procedures. Failure of the operator to read the operators manual is a misuse of this equipment.

It is the customer and/or operators responsibility to inspect the product and to have any part(s) repaired or replaced when continued operation would cause damage or excessive wear to other parts or cause a safety hazard.

It is the customer's responsibility to deliver the product to the authorized dealer, from whom the spreader was purchased, for service or replacement of defective parts, which are covered by warranty.

It is the customer's responsibility for any cost incurred by the dealer for hauling the product for the purpose of performing a warranty obligation or inspection.

WARRANTY INFORMATION

Make certain the warranty registration card has been forwarded to:

Pik Rite, Inc.
60 Pik Rite Lane
Lewisburg, PA 17837

Always give your dealer the serial number of your Pik Rite, Inc. product when ordering parts or requesting service or other information.

In the space provided record the model number, the serial number and the date of purchase to assist in providing you with prompt and efficient service.

MODEL NUMBER: HR880

DEALER: _____

SERIAL NUMBER: _____

ADDRESS: _____

PURCHASE DATE: _____

PHONE: _____

SALESMAN: _____

Keep Page for Your Records

Pik Rite, Inc.
60 Pik Rite Lane
Lewisburg, PA 17837

Phone: 800-326-9763
Fax: 570-523-8175
www.pikrite.com

HR880
Parts Manual
Manure Spreader