

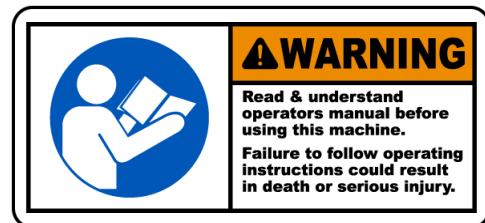


## DEBRIS COLLECTOR

# OPERATION AND PARTS MANUAL



PROUDLY MADE IN THE USA



Pik Rite Inc.  
60 Pik Rite Lane  
Lewisburg, PA 17837

FEBUARY 2021

Phone 800-326-9763  
Fax 570-523-8175  
[www.pikrite.com](http://www.pikrite.com)





## DEBRIS COLLECTOR

Some illustrations may not represent the model you have; however, the principles of operation and maintenance are the same. If you have questions specific to your model, please contact your dealer.

**SPECIFICATIONS AND DESIGN SUBJECT TO CHANGE WITHOUT NOTICE**

## OPERATION MANUAL 5

INTRODUCTION	5
--------------	---

SAFETY	6
--------	---

PREPARING THE DEBRIS COLLECTOR	10
--------------------------------	----

CONTROLS	11
----------	----

OPERATING THE DEBRIS COLLECTOR	12
--------------------------------	----

TRANSPORT	13
-----------	----

LUBRICATION AND MAINTENANCE	14
-----------------------------	----

SPECIFICATIONS	17
----------------	----

## PARTS MANUAL 19

PRDC20-1-01A	MAIN BOX, TRUCK MOUNT	20
--------------	-----------------------	----

PRDC20-1-01B	MAIN BOX, ROLL-OFF	22
--------------	--------------------	----

PRDC20-1-02	MOVING PANEL, FLAP DOOR, BELTING	24
-------------	----------------------------------	----

PRDC20-1-03A	REAR DOOR, LIGHTS, NO CHIPPER DOOR	26
--------------	------------------------------------	----

PRDC20-1-03B	REAR DOOR, LIGHTS, CHIPPER DOOR	26
--------------	---------------------------------	----

PRDC20-1-03C	REAR DOOR, NO LIGHTS, CHIPPER DOOR	26
--------------	------------------------------------	----

PRDC20-1-03D	REAR DOOR, NO LIGHTS, NO CHIPPER DOOR	26
--------------	---------------------------------------	----

PRDC20-2-01A	HYDRAULICS, TRUCK MOUNT	29
--------------	-------------------------	----

PRDC20-2-01B	HYDRAULICS, ROLL-OFF	30
--------------	----------------------	----

PRDC20-2-02A	DIESEL ENGINE UNIT	32
--------------	--------------------	----

PRDC20-2-02B	GAS ENGINE UNIT	33
--------------	-----------------	----

PRDC20-3-01A	ELECTRICAL ASSEMBLY, TRUCK MOUNT	34
--------------	----------------------------------	----

PRDC20-3-01B	ELECTRICAL ASSEMBLY, ROLL-OFF	35
--------------	-------------------------------	----

PRDC20-4-01	DECAL ASSEMBLY	36
-------------	----------------	----

## WARRANTY



## TO THE NEW OPERATOR OR OWNER

Since 1986 Pik Rite equipment has been developed by people who work as hard as you do in the fields, on the farm and on site. Our goal is to deliver products that get the job done with the most efficient results. If you want tough, dependable people and products you can count on, we've got your back.

This manual is provided to all our customers of newly manufactured debris collectors to create an awareness of all maintenance expectations and dangers that may be encountered when owning this equipment. This manual should be kept for all future references. Please review these operating instructions carefully, then sign and date the last page of this document and return it to Pik Rite Inc. for processing. This will activate your warranty and verify that you have read and understand the following operating instructions and warnings. In the event you have questions or encounter other applications not discussed in this manual, please call before proceeding.

***Congratulations and Thank You*** for choosing a quality debris collector manufactured by Pik Rite Inc. We believe you'll be very satisfied with the purchase, and we appreciate your patronage.

## PRINCIPLES OF OPERATION

The debris collector features heavy duty components throughout the entire unit. With a strong moving panel and a rugged steal box design for maximum strength and durability, this machine is designed to efficiently and uniformly collect and compact debris.

***One Touch Compaction*** – The moving panel pushes rearward until set pressure is achieved, then moving panel returns forward.



## RECOGNIZE SAFETY INFORMATION

This is the safety-alert symbol. When you see this symbol on your machine or in this manual be alert to the potential of physical injury.

**Obey all safety messages that follow this symbol to avoid possibly injury or death.**

## UNDERSTAND SIGNAL WORDS

A signal word – DANGER, WARNING, or CAUTION – is used with the safety-alert symbol. DANGER identifies the most serious hazards.

**DANGER** indicates a hazardous situation which, if not avoided, **will** result in death or serious injury.

**WARNING** indicates a hazardous situation which, if not avoided, **could** result in death or serious injury.

**CAUTION** indicates a hazardous situation which, if not avoided, **could** result in minor or moderate injury.

**NOTICE** is used to address practices not related to physical injury.

**SAFETY INSTRUCTIONS** are used to indicate specific safety-related instructions or procedures.

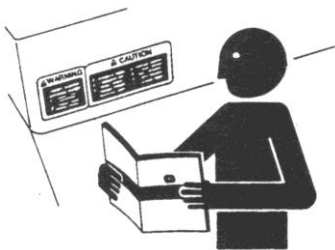
## FOLLOW SAFETY INSTRUCTIONS

Carefully read all safety messages in this manual and on your machine safety labels.

Learn how to operate the machine and how to use controls properly. Do not let anyone operate without instruction.

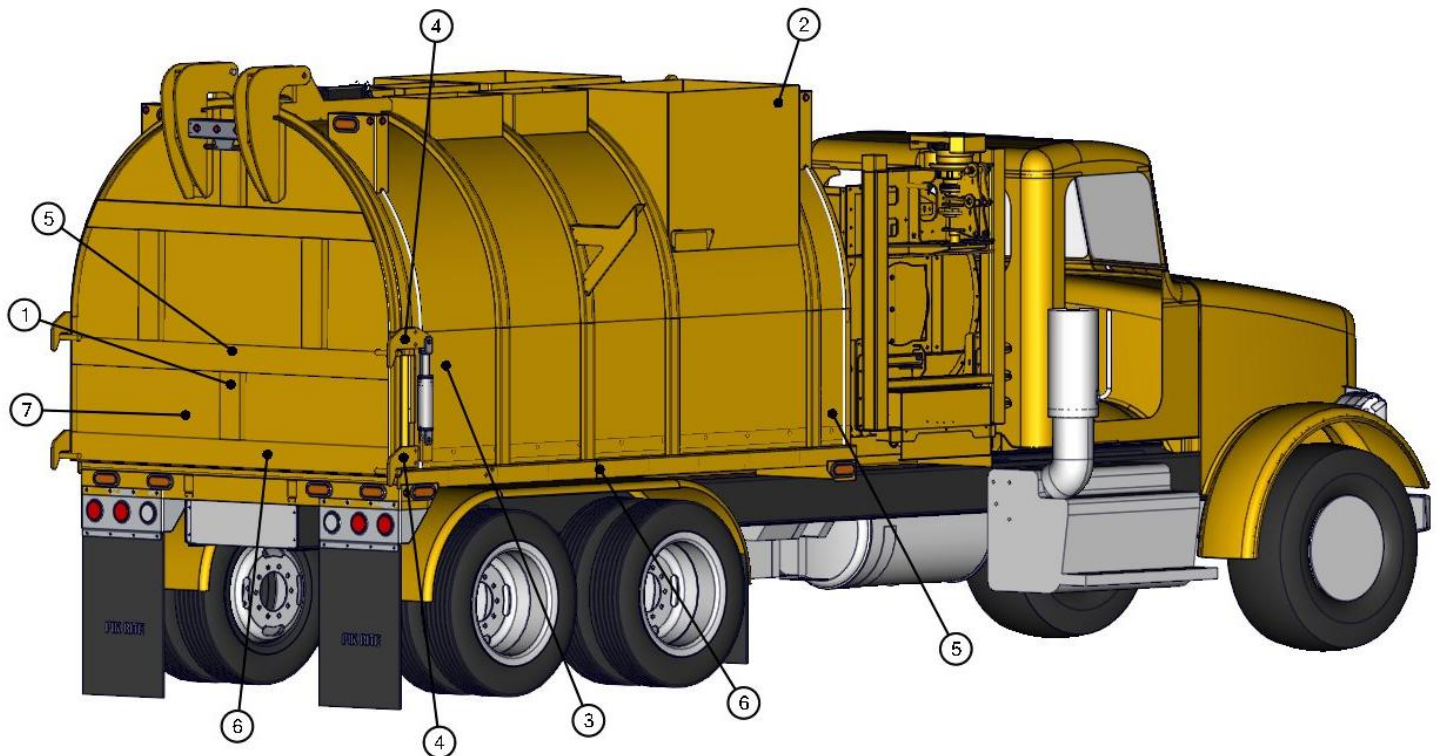
Keep your machine in proper working condition. Unauthorized modifications to the machine may impair the function and/or safety and affect machine life.

If you do not understand any part of this manual and need assistance, contact your Pik Rite dealer.



## REPLACE SAFETY LABELS

Keep safety labels in good condition. Replace missing or damaged safety labels. Be sure new equipment components and repair parts include the current safety labels. Replacement safety labels are available from your Pik Rite dealer (See “Decal Assembly” in the Parts Manual for part numbers.)





## SAFETY

### **⚠ DANGER** KEEP SHIELDS IN PLACE

Do not operate debris collector without safety shields in place.

Rotating parts can crush or dismember causing death or personal injury.



### **⚠ WARNING** PROTECT BYSTANDERS

Never operate the debris collector near people.

Do not place rocks, timbers or other solid objects in the debris collector. Objects can cause damage to the unit or to people.



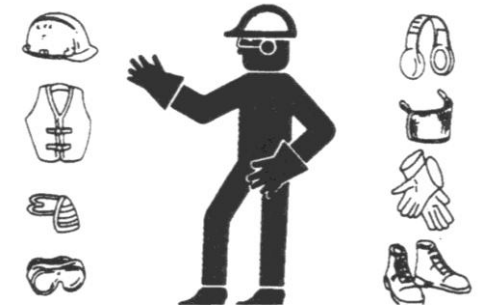
### **⚠ CAUTION** WEAR PROTECTIVE CLOTHING

Wear close fitting clothing and safety equipment appropriate to the job.

Prolonged exposure to loud noise can cause impairment or loss of hearing.

Wear a suitable hearing protective device such as earmuffs or earplugs to protect against objectionable or uncomfortable loud noises.

Operating equipment safely requires the full attention of the operator. Do not wear radio or music headphones while operating machine.



### **⚠ WARNING** USE SAFETY LIGHTS AND DEVICES

Slow moving tractors, self-propelled equipment and towed implements or attachments can create a hazard when driven on public roads. They are difficult to see, especially at night. Avoid personal injury or death resulting from collision with a vehicle.

Flashing warning lights and turn signals are recommended whenever driving on public roads. To increase visibility, use the devices provided with your machine. For some equipment, install extra flashing warning lights.

Keep safety items in good condition. Replace missing or damaged items.

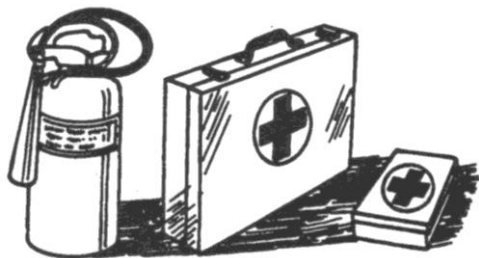






### **⚠️ WARNING KEEP RIDERS OFF MACHINE**

Riders are subject to injury such as being struck by foreign objects and being thrown off the machine. Riders also obstruct the operator's view resulting in the machine being operated in an unsafe manner



### **NOTICE PREPARE FOR EMERGENCIES**

Be prepared if a fire starts.

Keep a first aid kit and fire extinguisher handy.

Keep emergency numbers for doctors, ambulance service, hospital, and fire department near your telephone.



### **⚠️ DANGER OPERATE DEBRIS COLLECTOR SAFELY**

Rotating parts can entangle or strike people, resulting in death or personal injury.

Never enter a debris collector while in operation.

Operate the unit from the truck seat only.

Do not exceed load capacity of the debris collector.

Reduce speed when turning or traveling on rough terrain. Avoid traveling over loose fill, rocks, ditches or holes.

When working on inclines or slopes, travel uphill or downhill. Keep truck in gear when traveling downhill.



### **⚠️ WARNING STAY CLEAR OF RAISED TAILGATE**

Contact with a lowering tailgate can cause death or personal injury.

Lower endgate and engage door prop before servicing or adjust.

## SAFETY

### **⚠️ WARNING** AVOID HIGH-PRESSURE FLUIDS

Escaping fluid under pressure can penetrate the skin causing serious injury.

Avoid the hazard by relieving pressure before disconnecting hydraulic or other lines. Tighten all connections before applying pressure.

Search for leaks with a piece of cardboard. Protect hands and body from high pressure fluids.

If an accident occurs, see a doctor immediately. Any fluid injected into the skin must be surgically removed within a few hours or gangrene may result. Doctors unfamiliar with this type of injury should reference a knowledgeable medical source.



## PREPARING THE DEBRIS COLLECTOR

### **SAFETY INSTRUCTIONS** SETTING HYDRAULIC SPEED ENDGATE OPERATION

**Excessive operating speed may cause machine damage. Adjust selective control valve lever to provide correct operating speed.**

Adjust selective control valve lever, it should take 50 to 60 seconds to fully extend the push cylinder. It should take 30 to 40 seconds to retract. It should take 6 to 8 seconds to full extend or retract the other cylinders.

### **SAFETY INSTRUCTIONS** CHECKING HYDRAULIC OIL LEVEL

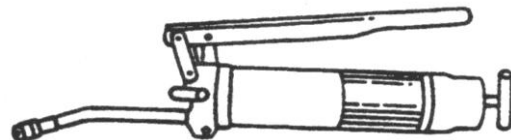
Cycle all hydraulic cylinders fully two or three times.

Fully retract all cylinders.

Check hydraulic oil level.

### **NOTICE** LUBRICATING THE MACHINE

Be sure the machine has been adequately lubricated.  
(See Lubrication and Maintenance page.)





## SAFETY INSTRUCTIONS

### OPERATING THE COMPACTION

To start compaction, engage PTO slowly, at low engine rpm.

Press “Compact Start” on control keypad.

To stop compaction, disengage PTO or press “Compact Stop”.

For best results, operate the truck engine at “PTO RATED” speed.



## SAFETY INSTRUCTIONS

### OPERATING THE LATCHES

To open, press “Latches Open” on control keypad.

To close, press “Latches Close” on control keypad.



## SAFETY INSTRUCTIONS

### OPERATING THE TAILGATE

To open, press “Door Open” on control keypad

To close, press “Door Close” on control keypad

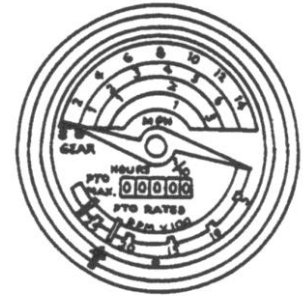
In order for the tailgate to open, latches must be open.

# OPERATING THE DEBRIS COLLECTOR

## SAFETY INSTRUCTIONS

### PREOPERATING CHECKS

1. Be sure debris collector does not contain any foreign objects
2. Check for correct hydraulic level
3. Raise tailgate fully. Engage compaction
4. Close tailgate
5. Close latches



## ⚠ CAUTION

### PREPARE TO UNLOAD THE COLLECTOR

Help prevent personal injury. Be sure no one is near debris collector and truck before operating.

Start compaction by engaging PTO slowly at low engine rpm. Increase to “PTO RATED” speed.

For best spreading results, operate truck at “PTO RATED” speed.

## NOTICE

### RAISE TAILGATE

The tailgate closes off the back end of the debris collector to contain debris.

The tailgate is locked in position with latches on both sides of the unit.

## SAFETY INSTRUCTIONS

### UNLOADING DEBRIS COLLECTOR

1. Press “Compact Start” on control keypad
2. When debris collector is empty, moving panel will return forward, close tailgate, close latches, and disengage PTO.



### NOTICE

#### CLEANING DEBRIS COLLECTOR IN COLD WEATHER

When operating the debris collector during extended periods of subfreezing temperatures, frozen material may build up on steel surfaces. This can prevent the moving panel from moving.

After completing collecting for the day, use the following cleaning procedure.

**Cleaning is only necessary during extended periods of subfreezing temperatures.**

Remove material along edges of box and moving panel

Remove material buildup from tailgate panel. Keep tailgate arms clean to prevent freezing to side rails.



### NOTICE

#### WARMING HYDRAULIC OIL TEMPERATURES BELOW 0°F (-18°C)

It is necessary to warm the hydraulic oil for proper debris collector operation.

## TRANSPORT



### NOTICE

#### LIGHTING

Truck mounted debris collectors are equipped with all the lighting needed to be FMVSS 108 compliant. Strobe lights are also equipped as a standard. Keep safety items in good condition. Replace missing or damaged items.

## LUBRICATION AND MAINTENANCE

### NOTICE

#### SERVICE INTERVALS

- Change hydraulic lubricant every 6,000 loads

#### EVERY 8 HOURS

- Remove debris from top screens

#### EVERY 40 HOURS

- Check moving panel rubber seals

#### EVERY 50 HOURS

- Lubricate latch slides
- Lubricate chipper door pivots

#### EVERY 250 HOURS

- Lubricate tailgate pivots



### SAFETY INSTRUCTIONS

#### REMOVE DEBRIS FROM SCREENS

When unit is not running, climb ladder to top, open cleanout door. Remove debris from all six screens.

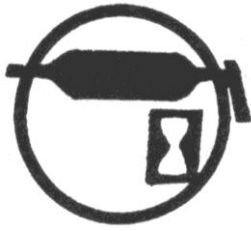


### NOTICE

#### CHECK MOVING PANEL SEALS

1. Check rubber seals for damage.
2. Repair any cuts or breaks as soon as possible.





## **⚠ CAUTION** LUBRICATING AND MAINTAINING DEBRIS COLLECTOR

Help prevent personal injury caused by unexpected movement of the machine. Disengage PTO, engage parking brake and/or place transmission in "PARK", shut off engine, and remove key.

Replace all shields after lubricating or servicing.

## **NOTICE** OBSERVING INTERVALS

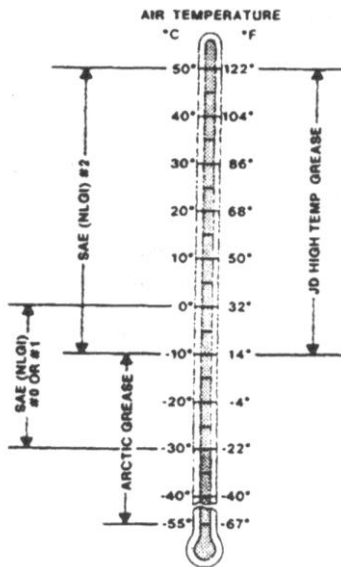
The intervals recommended are based on normal conditions. Severe or unusual conditions may require more frequent attention.

## **NOTICE** SELECTING GREASE

Depending upon the expected air temperature range during the service interval, use grease as shown on the adjusting temperature chart.

SAE-Multipurpose High Temperature Grease with Extreme Pressure [EP] Performance with 3 to 5% molybdenum disulfide.

**Moly-type grease is recommended, however, if not available, multipurpose grease is acceptable.**





## LUBRICATION AND MAINTENANCE

### **NOTICE** GREASE SIDE LATCHES

Grease the four latch rods at the side of the box every 50 hours of operation.



### **NOTICE** GREASE CHIPPER DOOR PIVOTS

Grease the two bearing blocks on each side of the chipper door every 50 hours of operation.



### **NOTICE** GREASE TAILGATE PIVOTS

Grease the two tailgate top hinge pivots every 250 hours of operation.



**SPECIFICATIONS**

**WEIGHT**

Complete with Engine System	25,000 lb
-----------------------------	-----------

**VOLUME CAPACITY**

Box Size	19 cu. yd.
----------	------------

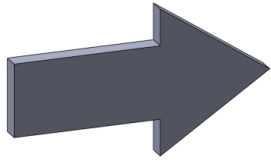
**UNLOADING SPEED**

Discharge Time	1 min.
----------------	--------

**SPECIFICATIONS AND DESIGN SUBJECT TO CHANGE WITHOUT NOTICE**



## DIRECTION ARROWS



ARROWS ARE USED WITH ILLUSTRATIONS TO INDICATE THE FRONT OF THE UNIT. "RIGHT-HAND" AND "LEFT-HAND" SIDES ARE DETERMINED BY FACING THE DIRECTION OF MACHINE FORWARD TRAVEL.

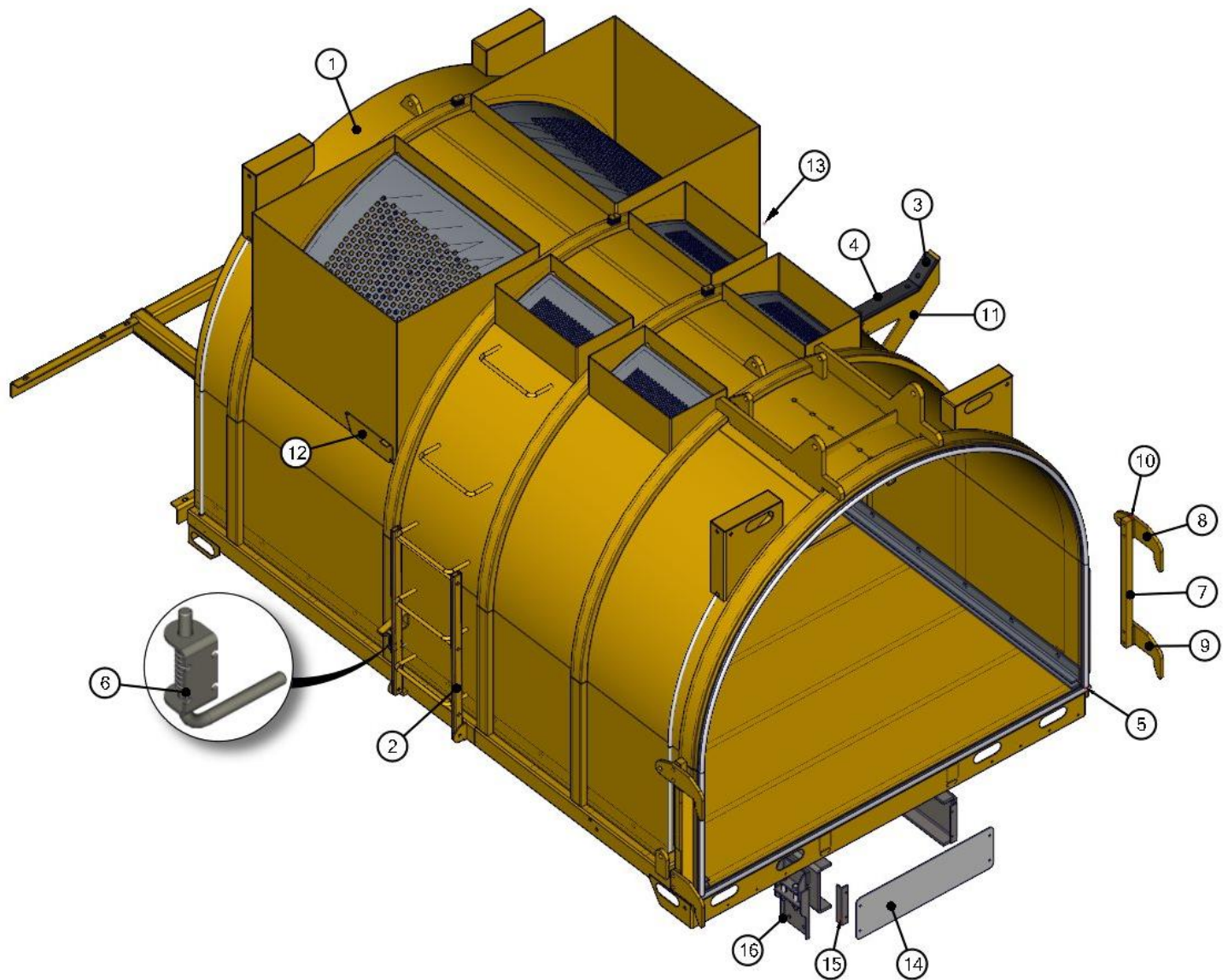
## REFERENCE NUMBER IDENTIFICATION

REF NO.	DESCRIPTION
000-099	PARTS USED FOR ASSEMBLY
100-199	BOLTS AND FASTENERS
200-299	ELECTRICAL COMPONENTS
800-899	REPLACEMENT PARTS (USED TO REPAIR ASSEMBLIES)

## PRDC20-1-01A MAIN BOX, TRUCK MOUNT

REF	PART	DESCRIPTION	QTY	WILL FIT SN	REMARKS
1	TAN-0019-7	Tank, Leaf Collection, Truck Mount	1		
2	STP-2000	Ladder, Leaf Unit	1		
3	RLR-0007	Rubber, Boom Holder, Leaf Unit	1		
4	RLR-0006	Rubber, Boom Holder, Leaf Unit	1		
5	RLR-0003	Rubber, Seal, 1'x1', MD EPDM, Bonded Tape, /Ft.	50		
6	LA-0002	Latch, Spring Loaded	1		
7	BRK-0445	Flat Bar, rear door latch, Leaf Unit	2		
8	BRK-0446	Plate Steel, rear door latch, Leaf Unit	2		
9	BRK-0447	Plate Steel, rear door latch, Leaf Unit	2		
10	BRK-0467	Spacer, rear door latch, Leaf	4		
11	BRK-1825	Bracket, Boom Mount, Bolt-On	1		
12	BRK-1926	Bracket, Clean Out Door, Leaf Unit, LH	1		
13	BRK-1935	Bracket, Clean Out Door, Leaf Unit, RH	1		
14	BRK-3040	Frame Enclosure, Leaf Unit	1		
15	BRK-3041	Frame Mount	2		
16	MOU-6	Mount, 6 Pocket, Vacuum Tank	1		

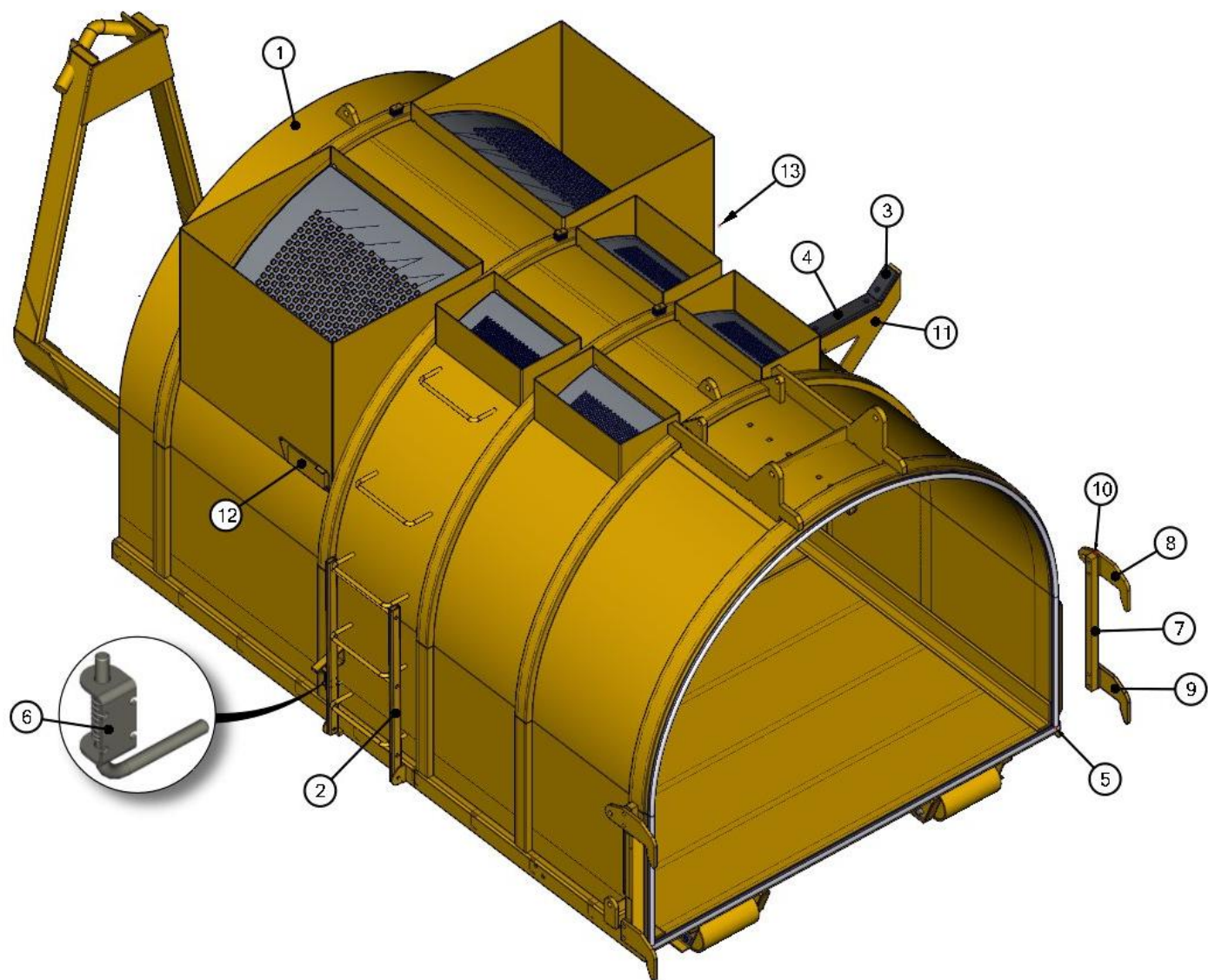
## PRDC20-1-01A MAIN BOX, TRUCK MOUNT



## PRDC20-1-01B MAIN BOX, ROLL-OFF

REF	PART	DESCRIPTION	QTY	WILL FIT SN	REMARKS
1	TAN-0019-8	Tank, Leaf Collection, Roll Off, Multilift Ult 16S-4600	1		
2	STP-2000	Ladder, Leaf Unit	1		
3	RLR-0007	Rubber, Boom Holder, Leaf Unit	1		
4	RLR-0006	Rubber, Boom Holder, Leaf Unit	1		
5	RLR-0003	Rubber, Seal, 1'x1', MD EPDM, Bonded Tape, /Ft.	50		
6	LA-0002	Latch, Spring Loaded	1		
7	BRK-0445	Flat Bar, rear door latch, Leaf Unit	2		
8	BRK-0446	Plate Steel, rear door latch, Leaf Unit	2		
9	BRK-0447	Plate Steel, rear door latch, Leaf Unit	2		
10	BRK-0467	Spacer, rear door latch, Leaf	4		
11	BRK-1825	Bracket, Boom Mount, Bolt-On	1		
12	BRK-1926	Bracket, Clean Out Door, Leaf Unit, LH	1		
13	BRK-1935	Bracket, Clean Out Door, Leaf Unit, RH	1		

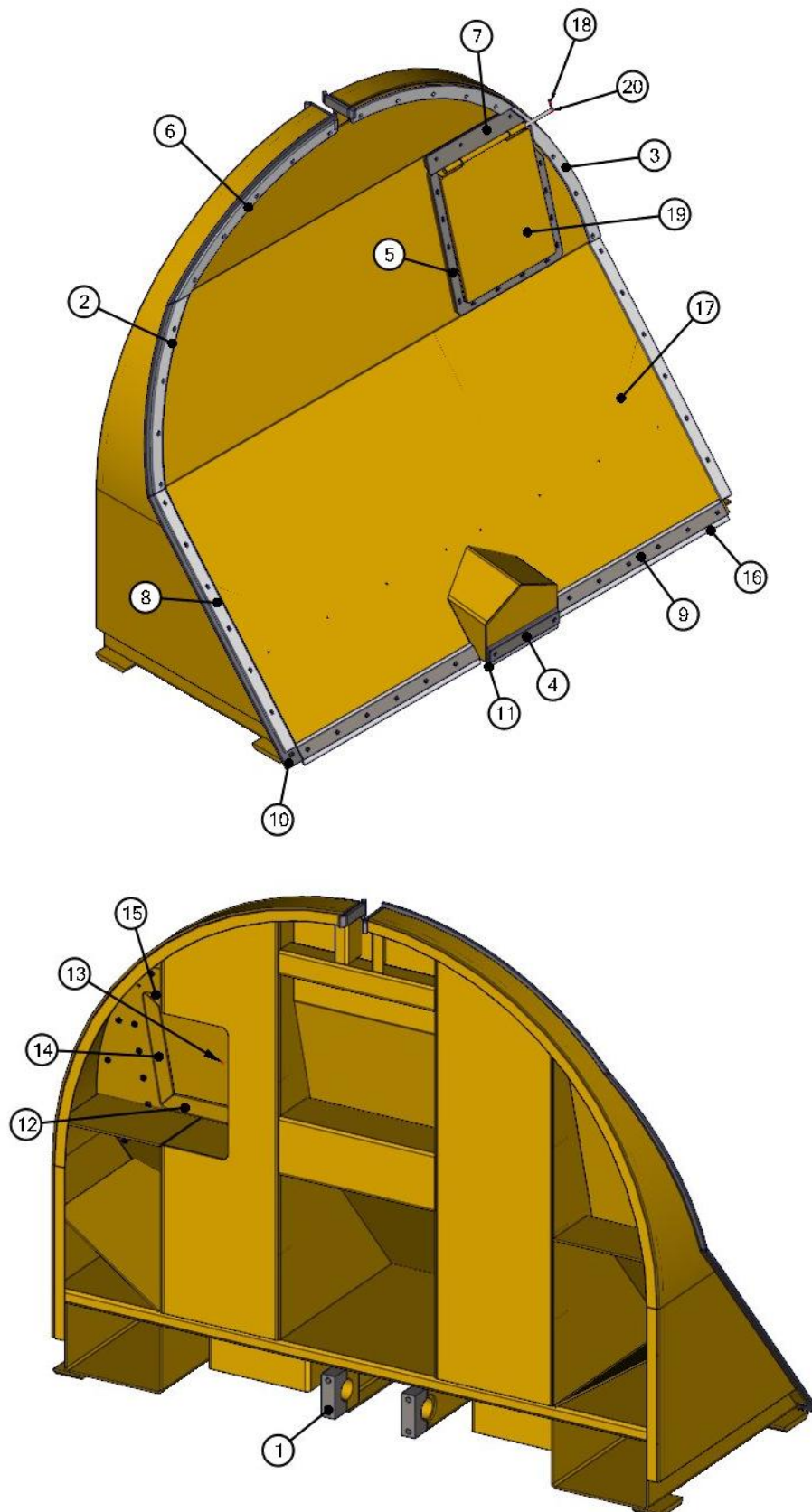




## PRDC20-1-02 MOVING PANEL, FLAP DOOR, BELTING

REF	PART	DESCRIPTION	QTY	WILL FIT SN	REMARKS
1	BRK-0061	Cylinder Mount	2		
2	BRK-2096	Belting Bar, Pusher Gasket	1		
3	BRK-2097	Belting Bar, Pusher Gasket	1		
4	BRK-2296	Pusher Belting Backer Plate	1		
5	BRK-2363	Belting Bar, Pusher Door	1		
6	BRK-2746	Top Belting Bar, Pusher Gasket	2		
7	BRK-2890	Door Hinge Bracket	1		
8	BRK-3001	Side Belting Bar, Pusher Gasket	2		
9	BRK-3002	Pusher Belting Backer Plate, Bottom	2		
10	BT-0089	Belting, Leaf Unit	2		
11	BT-0091	Pusher Lower Belting	1		
12	BT-0092	Belting, Bottom Side, Pusher Door	1		
13	BT-0093	Belting, Left Side, Pusher Door	1		
14	BT-0094	Belting, Right Side, Pusher Door	1		
15	BT-0095	Belting, Top Side Pusher Door	1		
16	BT-0096	Pusher Lower Belting	2		
17	HEDA-0030	Moving Panel, Leaf Unit	1		
18	PIN-C2-16	Cotter Pin, 1/8' x 1'	2		
19	PNL-0019	Pusher Door, Leaf Unit	1		
20	SFT-0024	Shaft, Hinge Pin, Pusher Door Flap, Leaf	1		

## PRDC20-1-02 MOVING PANEL, FLAP DOOR, BELTING



## PRDC20-1-03A REAR DOOR, LIGHTS, NO CHIPPER DOOR

REF	PART	DESCRIPTION	QTY	WILL FIT SN	REMARKS
1	BRK-0378	Bracket, Hoist support	1		
2	PIN-0013	Pin, Leaf Unit, Hinge Pin, Rear Door	2		Standard tank mark-up with labor \$40.38 11/19/19
3	PIN-20-54-CLV	Clevis Pin, 1-1/4' Dia. X 3-3/8' Usable	1		
4	HEDA-0029	Rear Door, Leaf Unit, No Chipper Door	1		

## PRDC20-1-03B REAR DOOR, LIGHTS, CHIPPER DOOR

REF	PART	DESCRIPTION	QTY	WILL FIT SN	REMARKS
1	BRK-0378	Bracket, Hoist support	1		
2	PIN-0013	Pin, Leaf Unit, Hinge Pin, Rear Door	2		Standard tank mark-up with labor \$40.38 11/19/19
3	PIN-20-54-CLV	Clevis Pin, 1-1/4' Dia. X 3-3/8' Usable	1		
4	HEDA-0023	Rear Door, Leaf Unit, Narrow Chipper Door	1		
5	HEDA-0024	Chipper Door Assy, Leaf Unit, Narrow Door	1		
6	LA-0002	Latch, Spring Loaded	1		

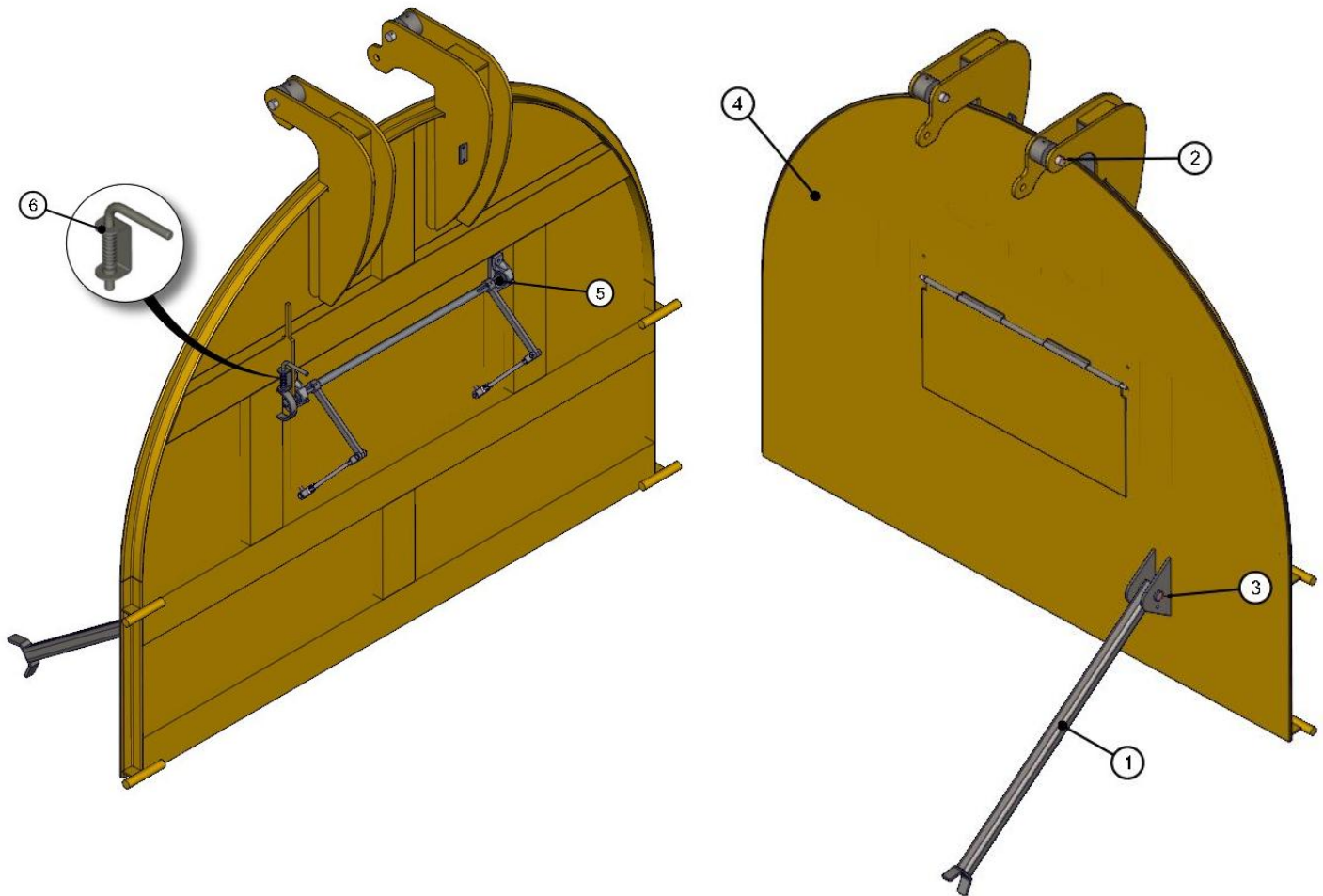
## PRDC20-1-03C REAR DOOR, NO LIGHTS, CHIPPER DOOR

REF	PART	DESCRIPTION	QTY	WILL FIT SN	REMARKS
1	BRK-0378	Bracket, Hoist support	1		
2	PIN-0013	Pin, Leaf Unit, Hinge Pin, Rear Door	2		Standard tank mark-up with labor \$40.38 11/19/19
3	PIN-20-54-CLV	Clevis Pin, 1-1/4' Dia. X 3-3/8' Usable	1		
4	HEDA-0028	Rear Door, Leaf Unit, No Lights	1		
5	HEDA-0024	Chipper Door Assy, Leaf Unit, Narrow Door	1		
6	LA-0002	Latch, Spring Loaded	1		

## PRDC20-1-03D REAR DOOR, NO LIGHTS, NO CHIPPER DOOR

REF	PART	DESCRIPTION	QTY	WILL FIT SN	REMARKS
1	BRK-0378	Bracket, Hoist support	1		
2	PIN-0013	Pin, Leaf Unit, Hinge Pin, Rear Door	2		Standard tank mark-up with labor \$40.38 11/19/19
3	PIN-20-54-CLV	Clevis Pin, 1-1/4' Dia. X 3-3/8' Usable	1		
4	HEDA-0031	Rear Door, Leaf Unit, No Lights, No Chipper Door	1		

## PRDC20-1-03B REAR DOOR, LIGHTS, CHIPPER DOOR





## PRDC20-2-01A HYDRAULICS, TRUCK MOUNT

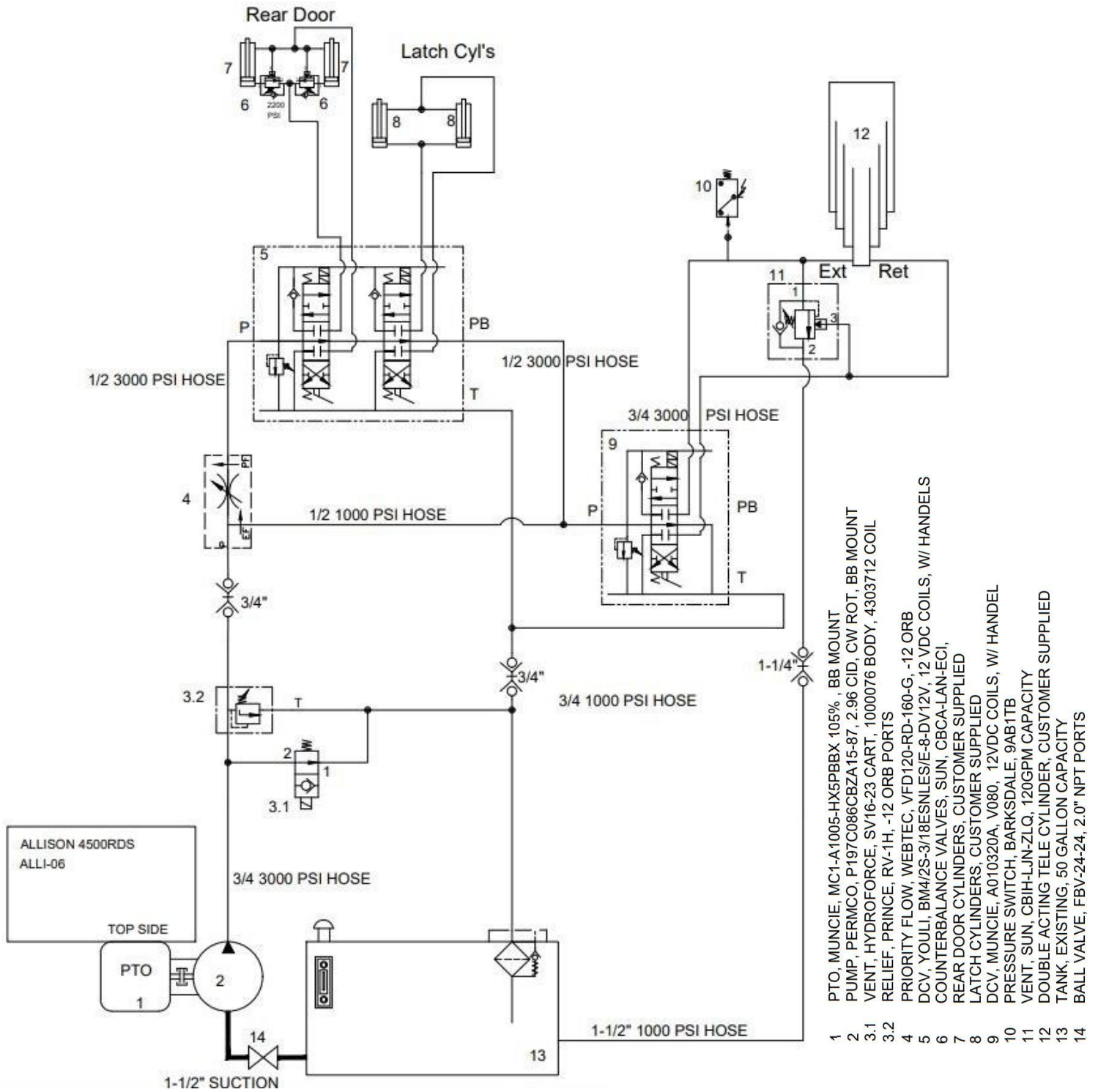
REF	PART	DESCRIPTION	QTY	WILL FIT SN	REMARKS
1	BRK-1803	Bracket, Hyd. Control Mount, Dual Valves	1		
2	PIN-0011	Pin, Front Cylinder, Leaf Tank	1		
3	DTA-0169	Hyd, Assy, Complete, Less Electrical	1		
4	HC-200-0808-2	Hydraulic Cylinder 2" x 8" #8 SAE Ports, 18.25" Retracted	2		
5	HC-300-0808	Tie Rod Cylinder, 3" x 8", #8 SAE Ports	2		
6	HC-600-93	Cylinder, Telescopic	1		
7	H-T8007	Hydraulic Tube, 1/2" Dia, SS, Inner	1		
8	H-T8008	Hydraulic Tube, 1/2" Dia, SS, Outer	1		
9	H-T8009	Hydraulic Tube, 1/2" Dia, SS, Latch Cylinders	2		
10	HW-08	1/2" OD Washer for Hydraulic Tube/Hose	4		



## PRDC20-2-01B HYDRAULICS, ROLL-OFF

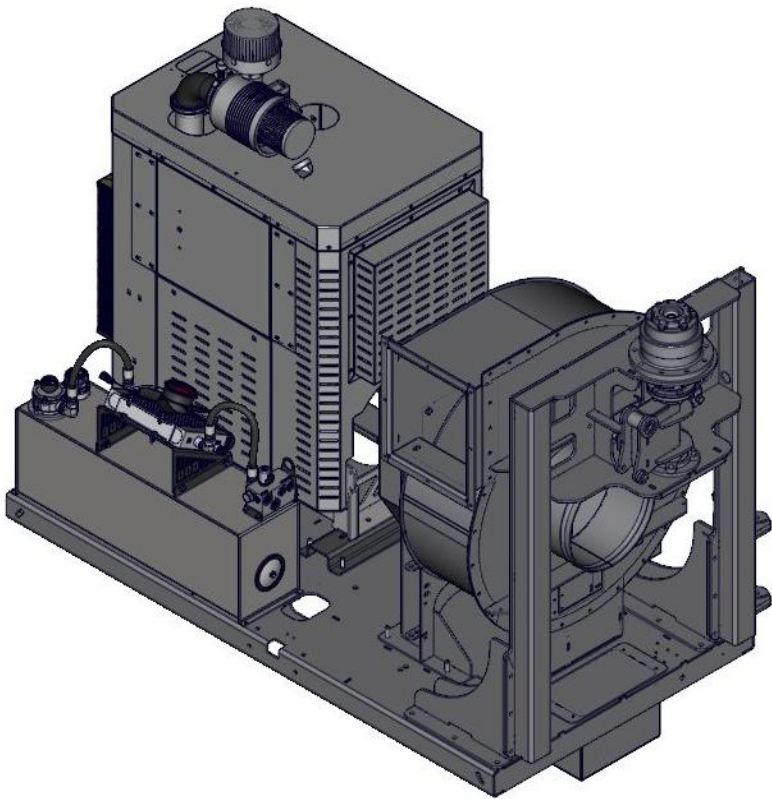
REF	PART	DESCRIPTION	QTY	WILL FIT SN	REMARKS
1	BRK-1803	Bracket, Hyd. Control Mount, Dual Valves	1		
2	PIN-0011	Pin, Front Cylinder, Leaf Tank	1		
3	DTA-0169	Hyd, Assy, Complete, Less Electrical	1		
4	A-2406-20-24	1-1/4" FIC x 1-1/2" MJIC Adapter	1		
5	A-6400-24-20	1 1/2" MJIC x 24 SAE	1		
6	A-6402-12-12	12SAE x 3/4FJX	2		
7	A-6402-20-20	1-1/4" O-Ring x 1-1/4" FJICS	1		
8	HC-200-0808-2	Hydraulic Cylinder 2" x 8" #8 SAE Ports, 18.25" Retracted	2		
9	HC-300-0808	Tie Rod Cylinder, 3" x 8", #8 SAE Ports	2		
10	HC-600-93	Cylinder, Telescopic	1		
11	H-T8007	Hydraulic Tube, 1/2" Dia, SS, Inner	1		
12	H-T8008	Hydraulic Tube, 1/2" Dia, SS, Outer	1		
13	H-T8009	Hydraulic Tube, 1/2" Dia, SS, Latch Cylinders	2		
14	HW-08	1/2" OD Washer for Hydraulic Tube/Hose	4		

## PRDC20-2-01B HYDRAULICS, ROLL-OFF



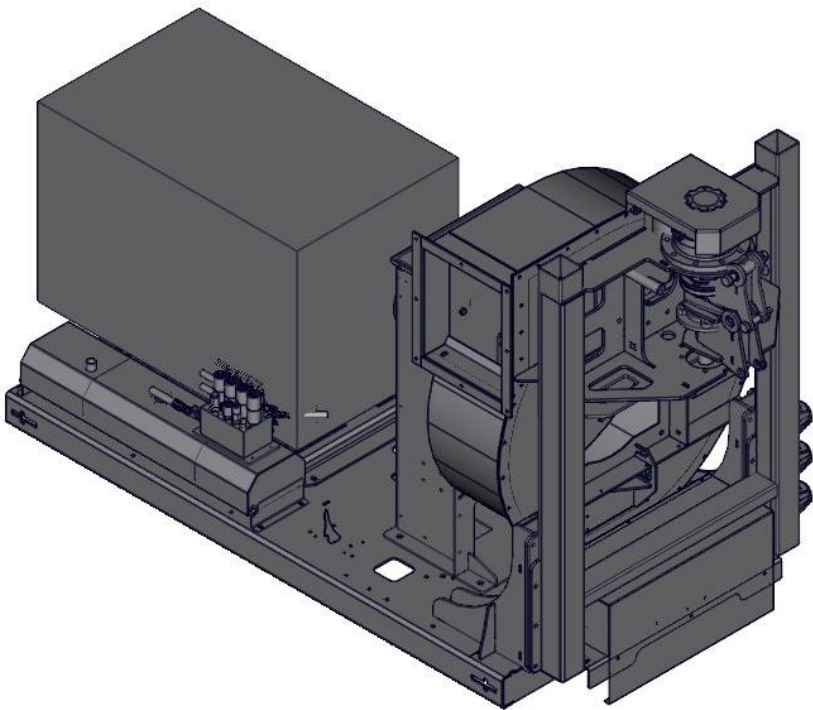
PRDC20-2-02A DIESEL ENGINE UNIT

REF	PART	DESCRIPTION	QTY	WILL FIT SN	REMARKS
1	ENG-36-ES	Diesel Engine Unit, ODB Leaf Unit, 74HP John Deere,	1		



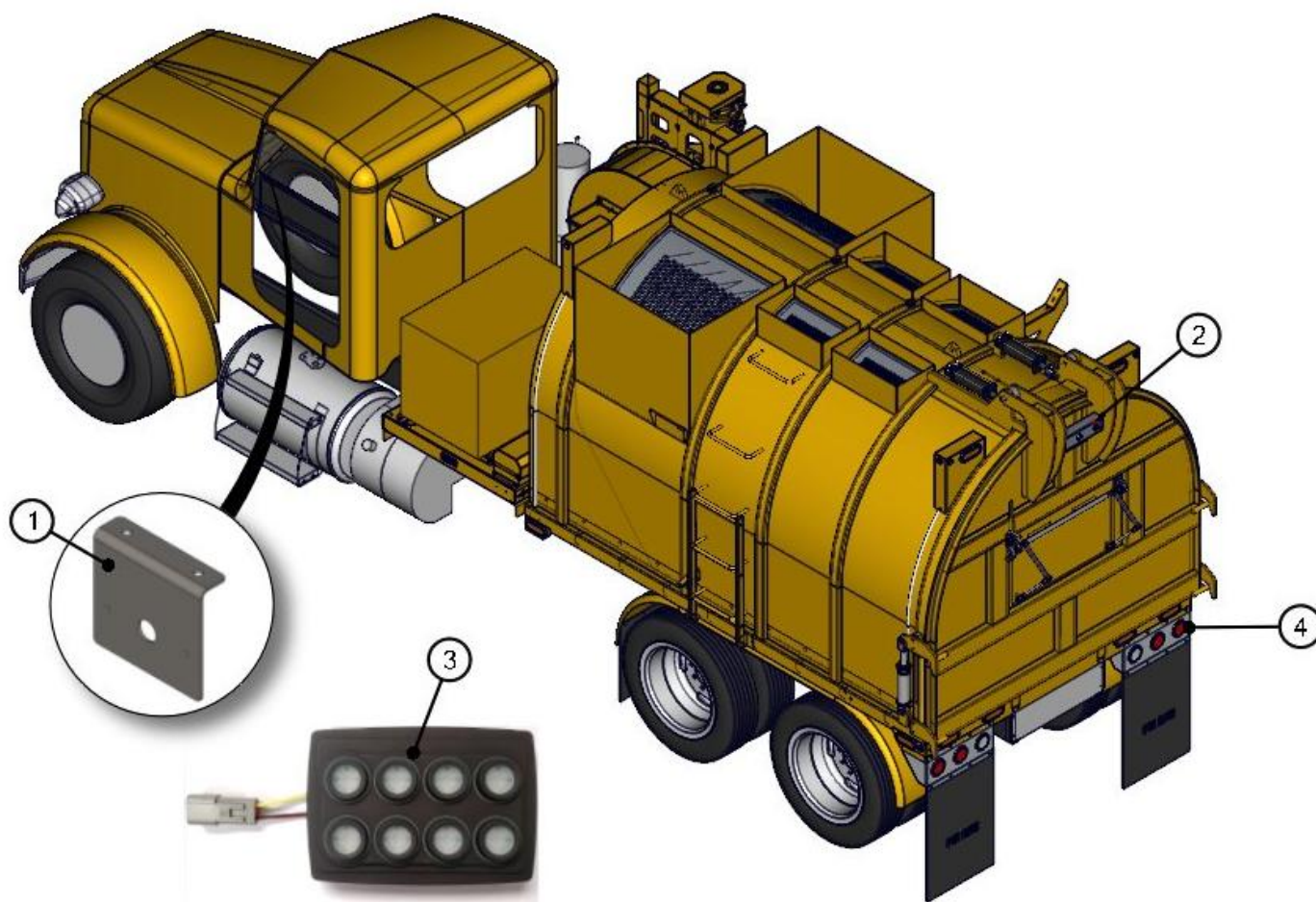
**PRDC20-2-02B GAS ENGINE UNIT**

REF	PART	DESCRIPTION	QTY	WILL FIT SN	REMARKS
1	ENG-37-ES	Gas Engine Unit, ODB Leaf Unit, 87HP Kubota WG3800-G-ES	1		



## PRDC20-3-01A ELECTRICAL ASSEMBLY, TRUCK MOUNT

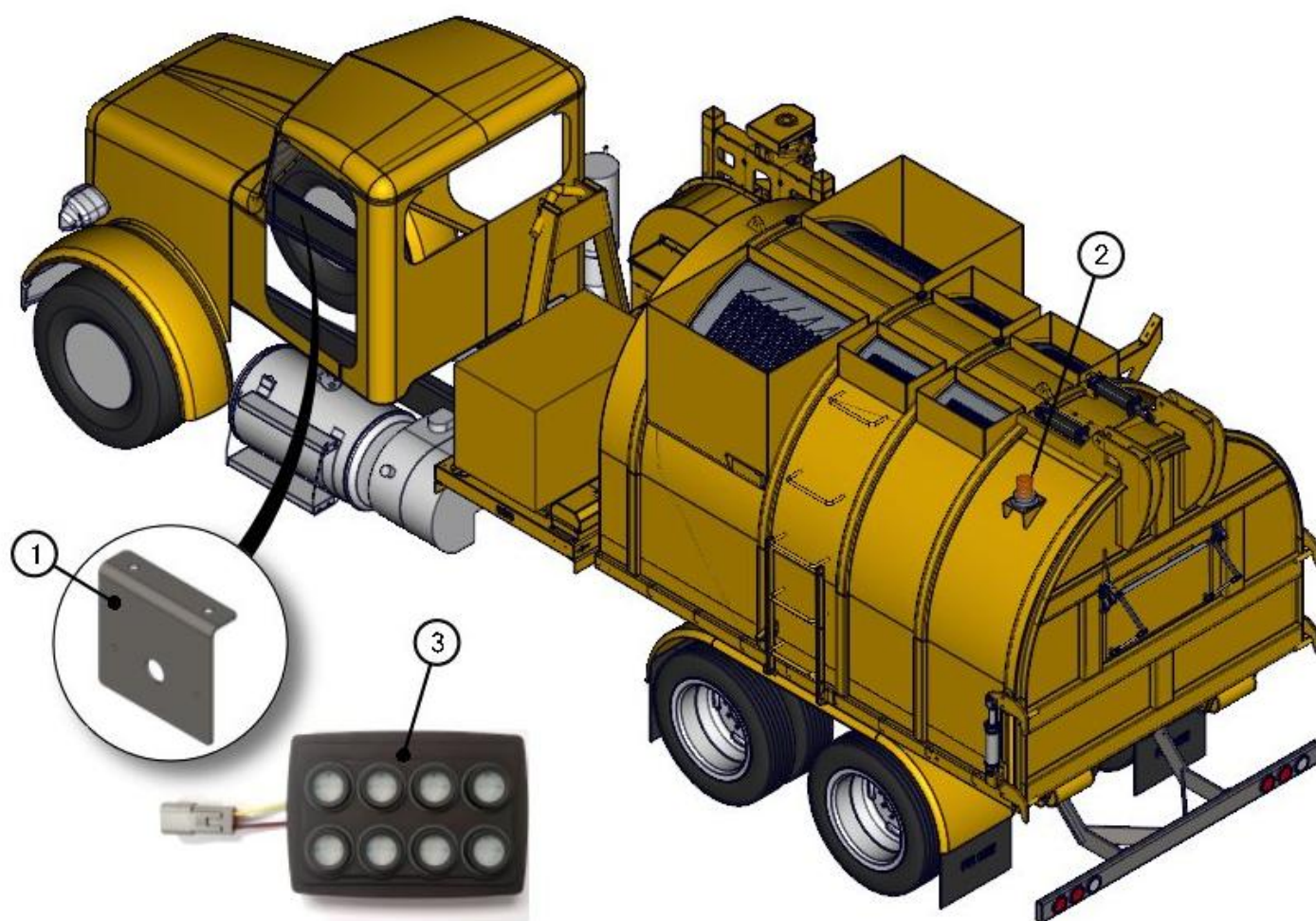
REF	PART	DESCRIPTION	QTY	WILL FIT SN	REMARKS
1	BRK-3025	8 Button Keypad Bracket	1		
2	ELA-118	Light Assy, Leaf Unit, Truck Mount	1		
3	CS-0004	Control Station, 8 Button Keypad, Leaf Unit, Sensors Included	1		
4	LBK-0136	Light Bracket, Leaf Unit, Under Rear, Mudflap Mount	2		
5	ELA-119	Strobe Assy, 12 TL60 Strobe	1		





## PRDC20-3-01B ELECTRICAL ASSEMBLY, ROLL-OFF

REF	PART	DESCRIPTION	QTY	WILL FIT SN	REMARKS
1	BRK-3025	8 Button Keypad Bracket	1		
2	ELA-0471	Assy, Light,LED Quad Flash Strobe, Components Only	2		
3	CS-0004	Control Station, 8 Button Keypad, Leaf Unit, Sensors Included	1		



## PRDC20-4-01 DECAL ASSEMBLY

REF	PART	DESCRIPTION	QTY	WILL FIT SN	REMARKS
1	DC-0011	Decal, All, 'Made in USA', White Back w/ Red & Blue Letters	1		
2	DC-0023	Decal, Caution, Keep All Shields In Place	2		
3	DC-0054	Decal, Danger, Leaf Unit	2		
4	DC-9012	DB, Caution, Pinch Point Watch Your Hand	4		
5	DC-1BK	Decal, Pik Rite Logo, 10/1/98, 3'x5', Black	3		
6	DC-3025	Red and White Reflective Tape @ 150 ft Roll	0.16		
7	DC-9011	DB, Caution, Do Not Step Or Ride	1		
8	DC-0125	Name Plate, 'ENABLE COMPACT LATCHES DOOR', 3/8 x 1 Acrylic Plastic	1		

